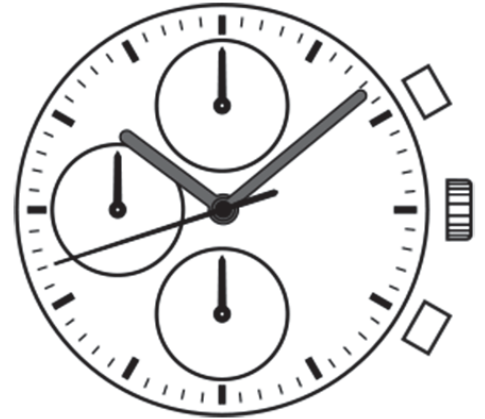


Watch Movement Specification and Drawing

Basic Chronograph Movement

VD55C



Movement Size: **12 3/4"**
 Diameter: **Φ29.50mm**
 Height: **3.97mm**

Items	Ver.	Items	Ver.
Specification	1		
Appearance	1		
Casing	1		
Hand Fitting	1		
Hand Setting Stem	1		
Dial	1		
Assembly Plan - 1	1		
Assembly Plan - 2	1		
Hands	1		

CAL.VD55C 12 $\frac{3}{4}$ Ligne Quartz Movement

Three Hands with 3 Eyes

Small Chronograph 1 / 10 Second, Small Chronograph Second & Minute Hands

1. FUNCTION

· Jewel	0 jewel
· Accuracy	Less than ± 20 seconds / month (Normal temperature range)
· Battery life	Approx. 3 years
· Regulation hands unbalance	Hour hand : Less than $0.60 \mu\text{N}\cdot\text{m}$ (60 mg $\cdot\text{mm}$) Minute hand : Less than $0.90 \mu\text{N}\cdot\text{m}$ (90 mg $\cdot\text{mm}$) Second hand : Less than $0.09 \mu\text{N}\cdot\text{m}$ (9 mg $\cdot\text{mm}$) Small chronograph hands : Less than $0.05 \mu\text{N}\cdot\text{m}$ (5 mg $\cdot\text{mm}$)
· The moment of inertia	Small chronograph 1/10 second hand : Less than 400 mg $\cdot\text{mm}^2$ (Disc hand)
· Additional function	Chronograph : up to 1 minute in 1/10 second (2 seconds per round) : up to 60 minutes in 1 second split time

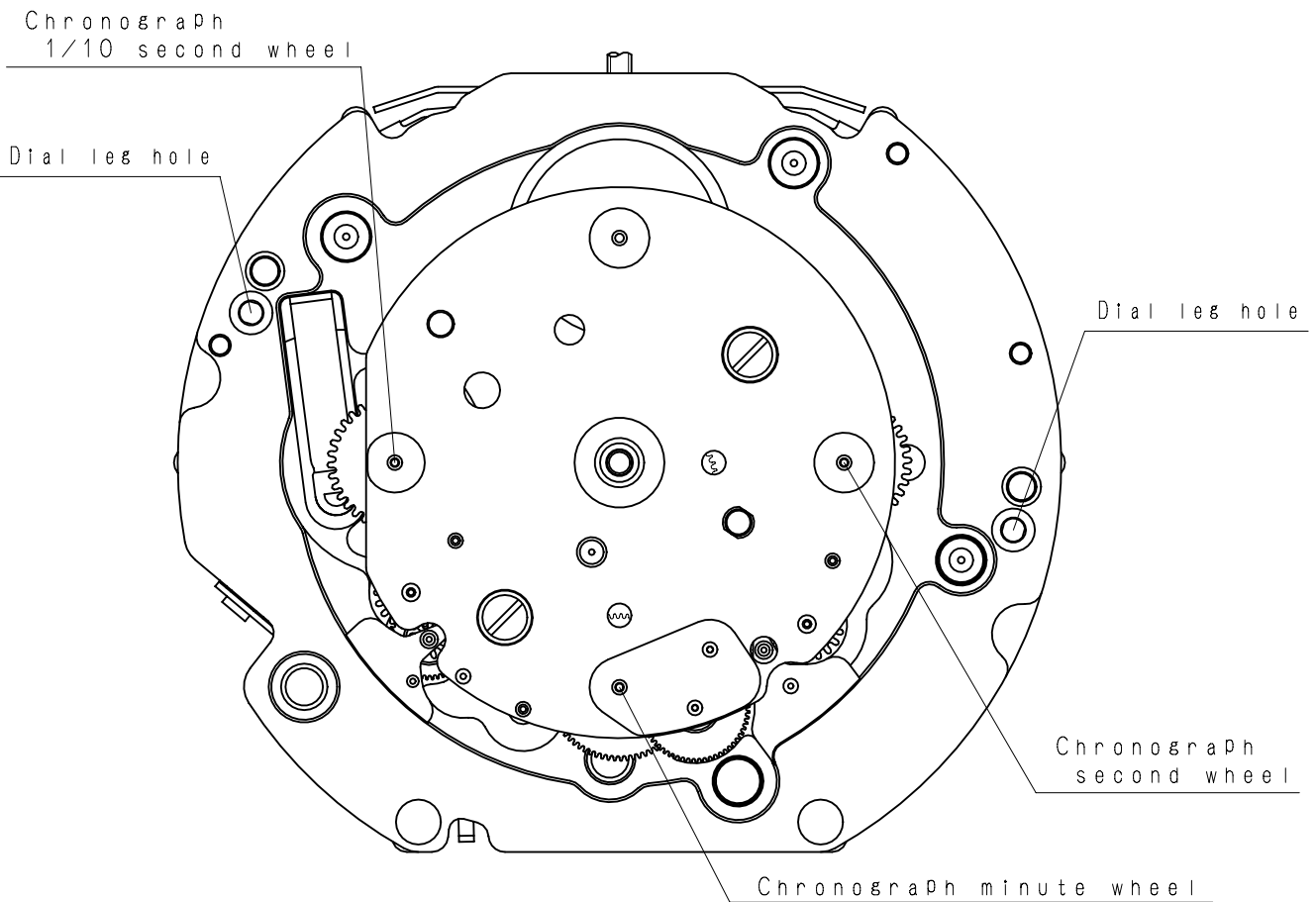
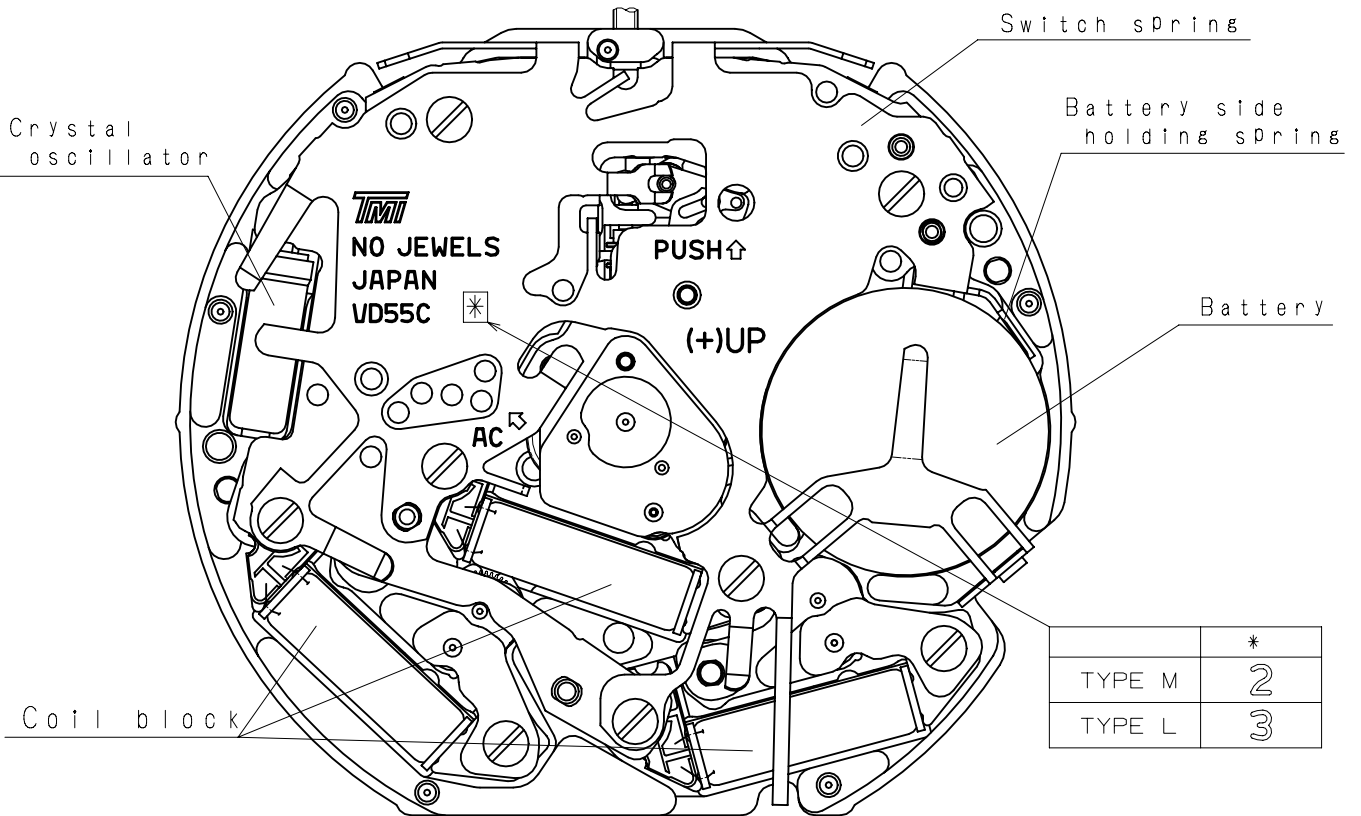
2. USE AND TEST CONDITION

· Battery	SR920SW	(Recommended battery is SEIZAIKEN)
· Operation temperature range	From - 5 °C to + 50 °C	
· Antimagnetic	≥ 1600 A / m	(Direct current magnetic field)
· Test of accuracy	10 seconds	(Duration of measurement)

*** All specifications are subject to change without notice.**

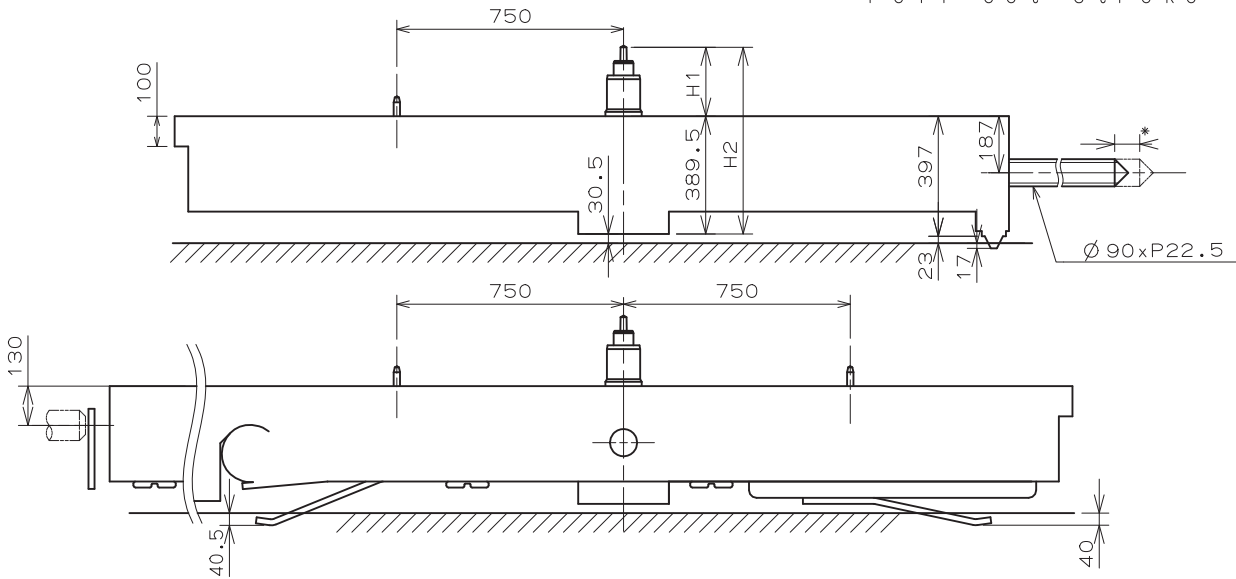
Appearance

VD55C

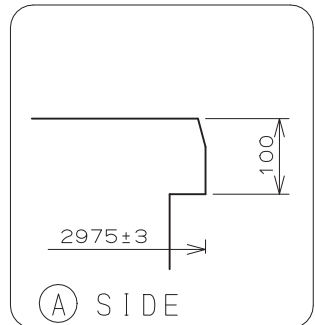
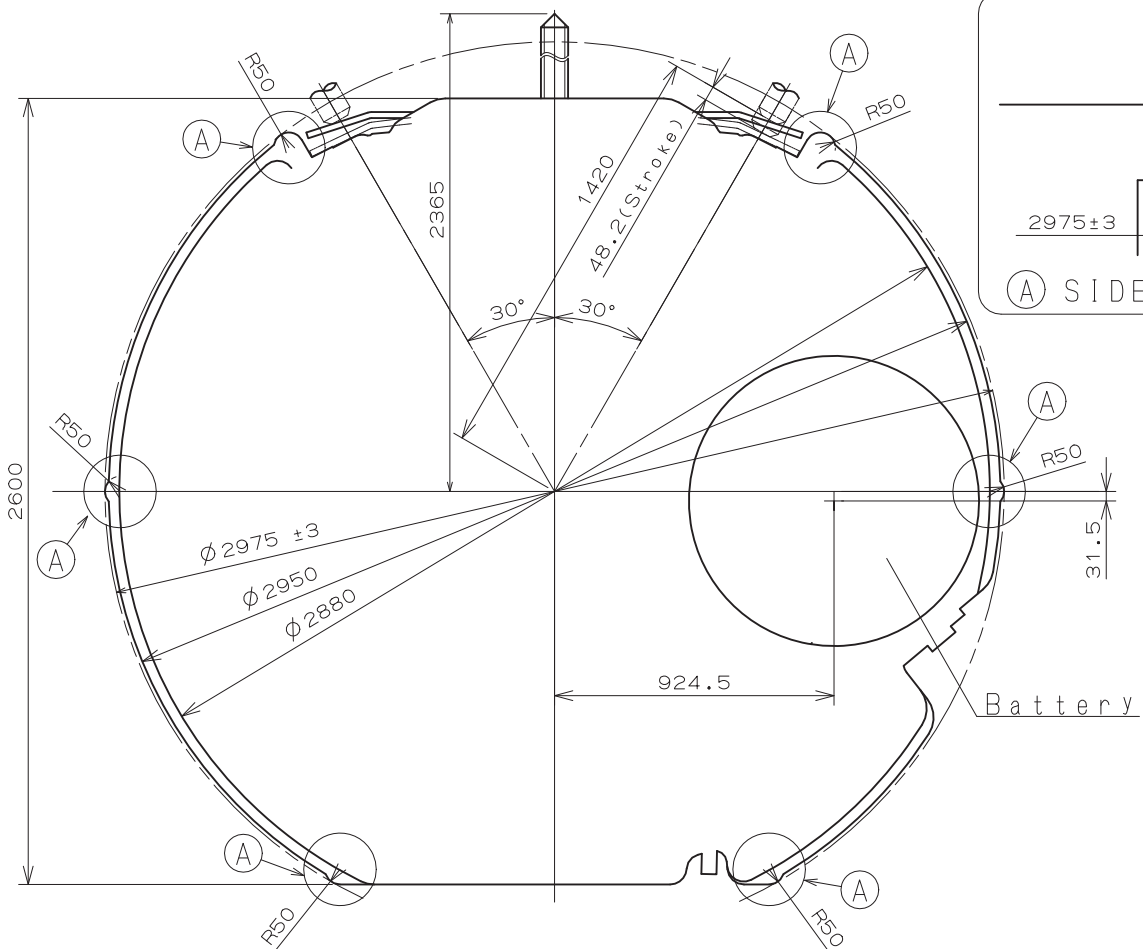


Version : 1

*Pull out stroke 42.9



Center post 中心柱位		TYPE M 一般針高	TYPE L 高針
Maximum height from main plate surface 與機芯平面的最大高度	H1	228	273
Total height incl. movement 機芯總高度	H2	617.5	662.5



Unit : 1=1/100mm

Version : 1

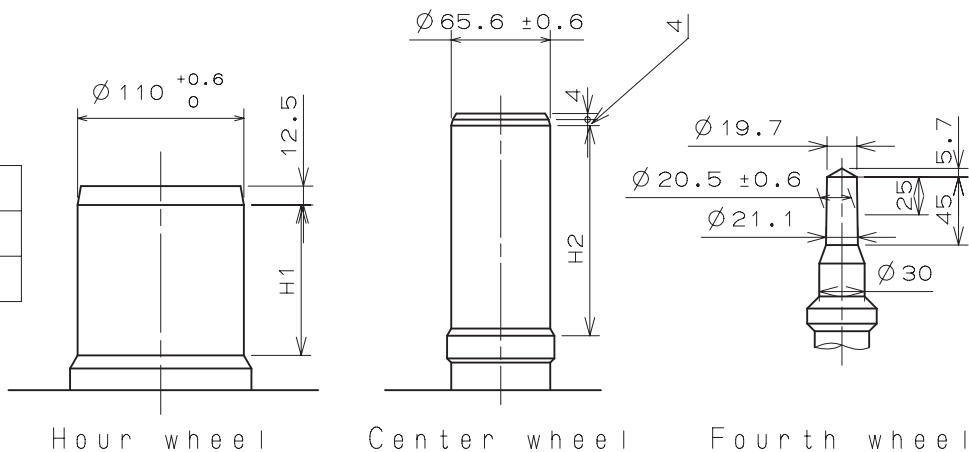
※Unbalance

- Hour hand $\leq 0.6 \mu\text{N}\cdot\text{m}$ (60mg·mm)
- Minute hand $\leq 0.9 \mu\text{N}\cdot\text{m}$ (90mg·mm)
- Second hand $\leq 0.09 \mu\text{N}\cdot\text{m}$ (9mg·mm)
- Chronograph hand $\leq 0.05 \mu\text{N}\cdot\text{m}$ (5mg·mm)

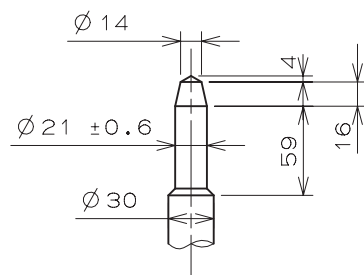
※Moment of inertia

- 1/10 Chronograph hand $\leq 0.4 \mu\text{g}\cdot\text{m}^2$ (400mg·mm²) (Disc hand available)

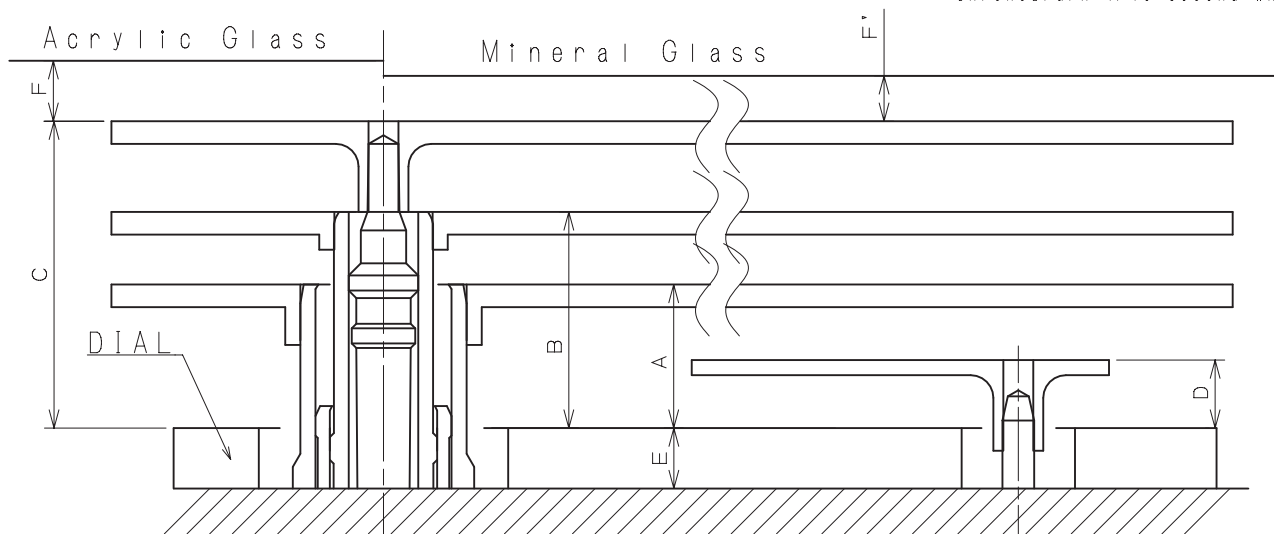
	H1	H2
TYPE M 一般針高	99.5	141
TYPE L 高針	144.5	186



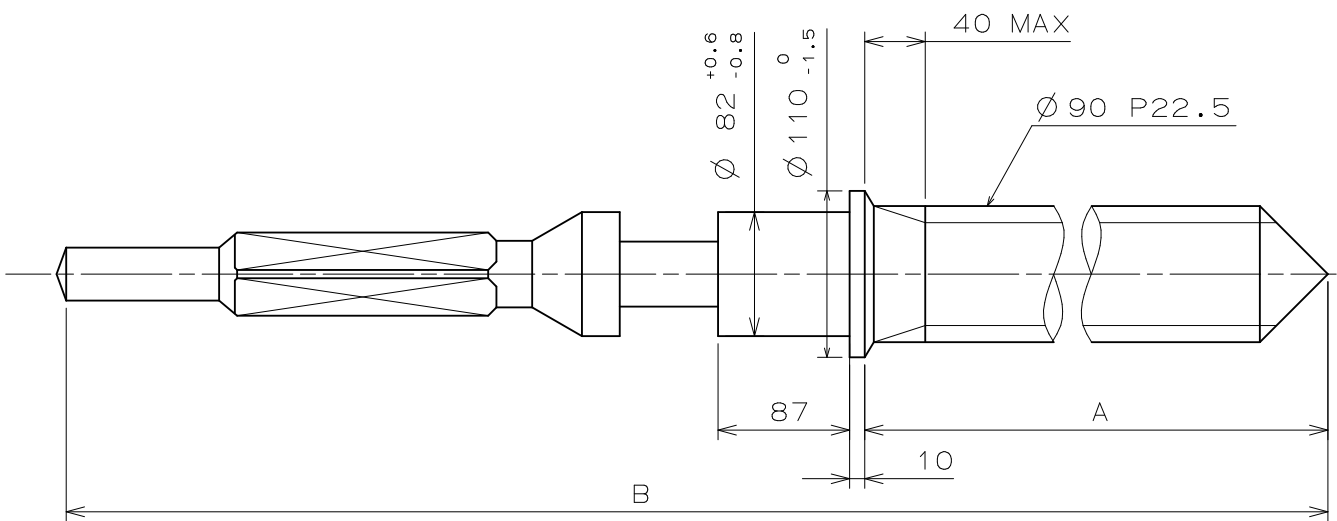
Part name		Part No.	
		TYPE M 一般針高	TYPE L 高針
Hour wheel	時針輪	0271 406	0273 036
Center wheel	分針輪	0221 205	0221 204
Fourth wheel	秒針輪	0241 177	0241 480
Chronograph minute wheel	計時分針輪	0902 007	0902 003
Chronograph second wheel	計時秒針輪	0888 008	0888 010
Chronograph 1/10 second wheel	1/10計時秒針輪	0888 008	0888 010



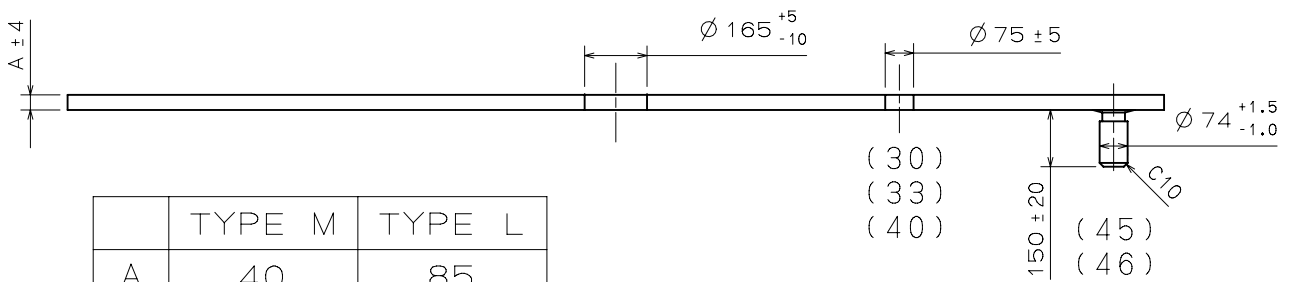
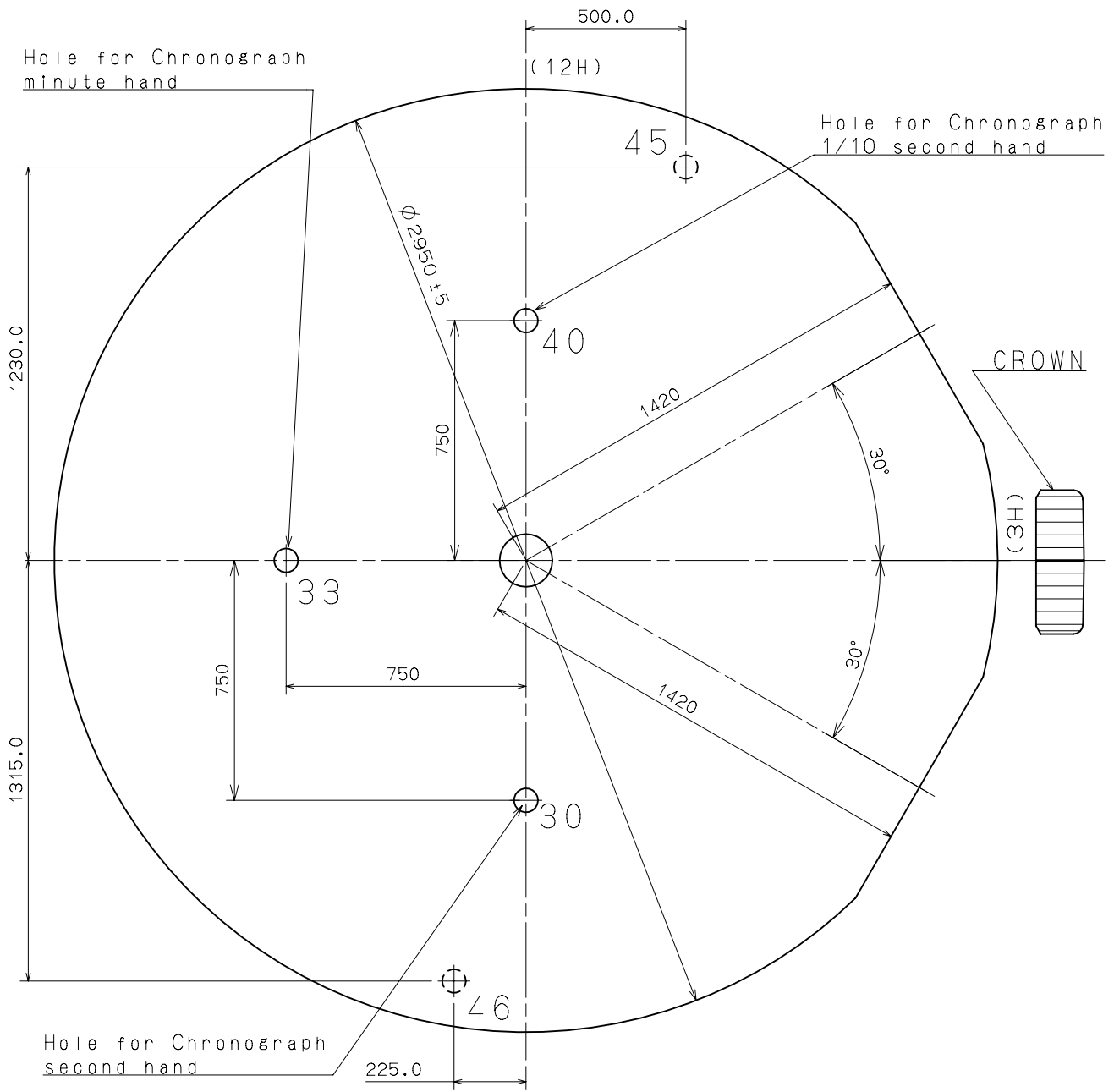
Chronograph minute wheel
Chronograph second wheel
Chronograph 1/10 second wheel



	A	B	C	D	E	F	F'
TYPE M 一般針高	95	143	203	45	40	50	40
TYPE L 高針	95	143	203	45	85	50	40

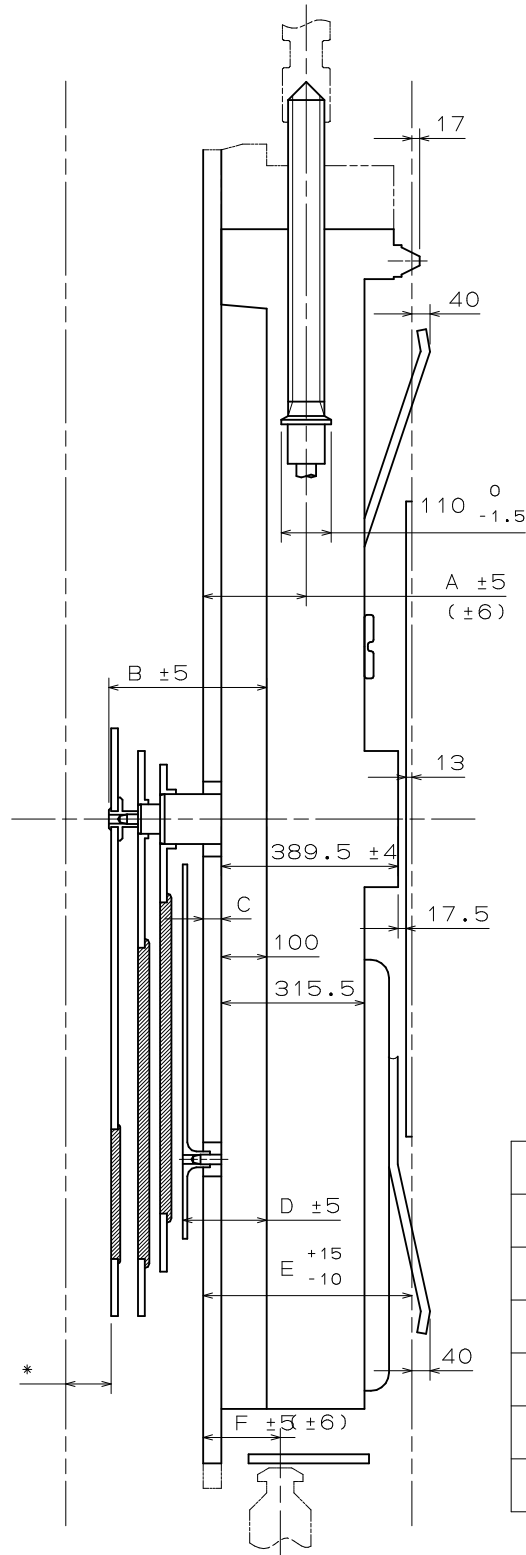


	Part No.	A	B
TYPE A	0351 178	1508	2036



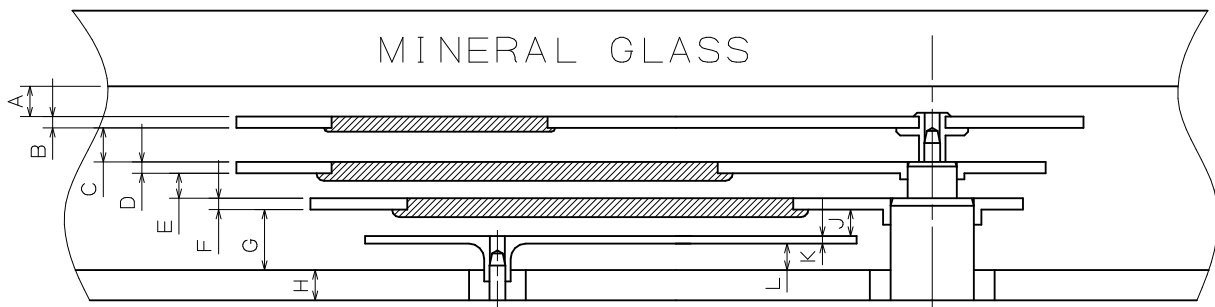
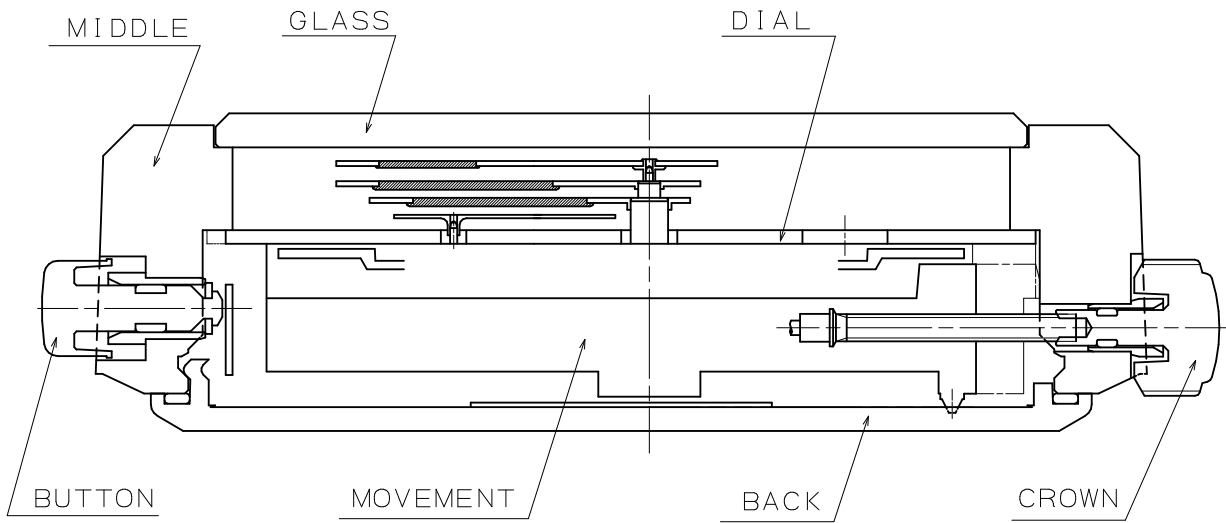
	TYPE M	TYPE L
A	40	85

(30)
(33)
(40)
150 ± 20
(45)
(46)



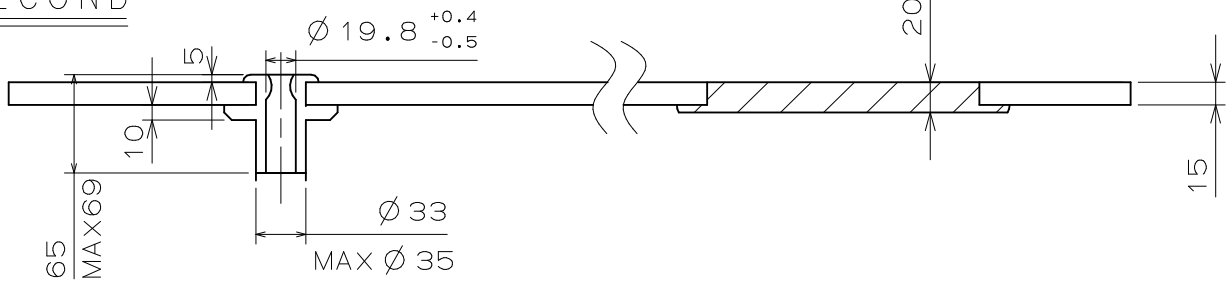
	TYPE M	TYPE L
A	227	272
B	343	388
C	40	85
D	185	230
E	460	505
F	170	215

*Acrylic Glass 50
 *Mineral Glass 40

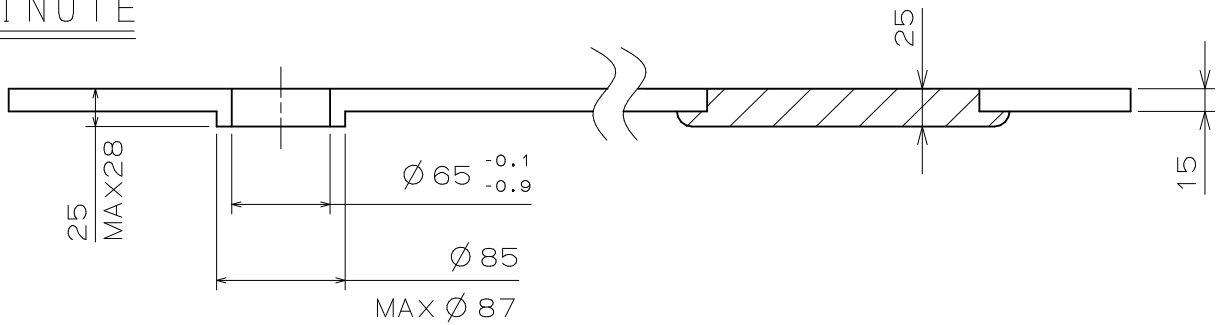


	TYPE M	TYPE L
A	40	40
B	15	15
C	45	45
D	15	15
E	33	33
F	15	15
G	80	80
H	40	85
J	35	35
K	10	10
L	35	35

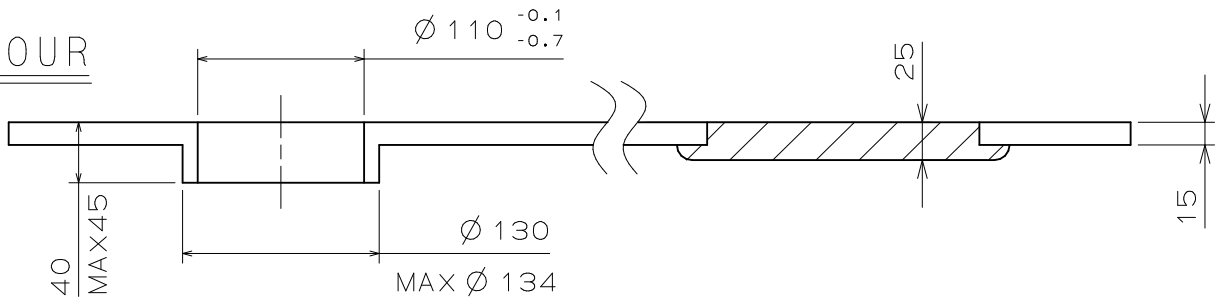
SECOND



MINUTE



HOUR



CHRONO

