

Watch Movement Specification and Drawing

Slim / Small Movement

VC01G



Movement Size: 4 ³/₄"
 Diameter: 14.50mm_[12H-6H] 10.80mm_[3H-9H]
 Height: 2.38mm

Items	Ver.	Items	Ver.
Specification	1		
Appearance	1		
Casing	1		
Hand Fitting	1		
Hand Setting Stem	1		
Dial	1		
Casing Ring - 1	1		
Casing Ring - 2	1		
Assembly Plan	1		
Hands	1		

CAL.VC01G 4 $\frac{3}{4}$ Ligne Quartz Movement

Three Hands

1. FUNCTION

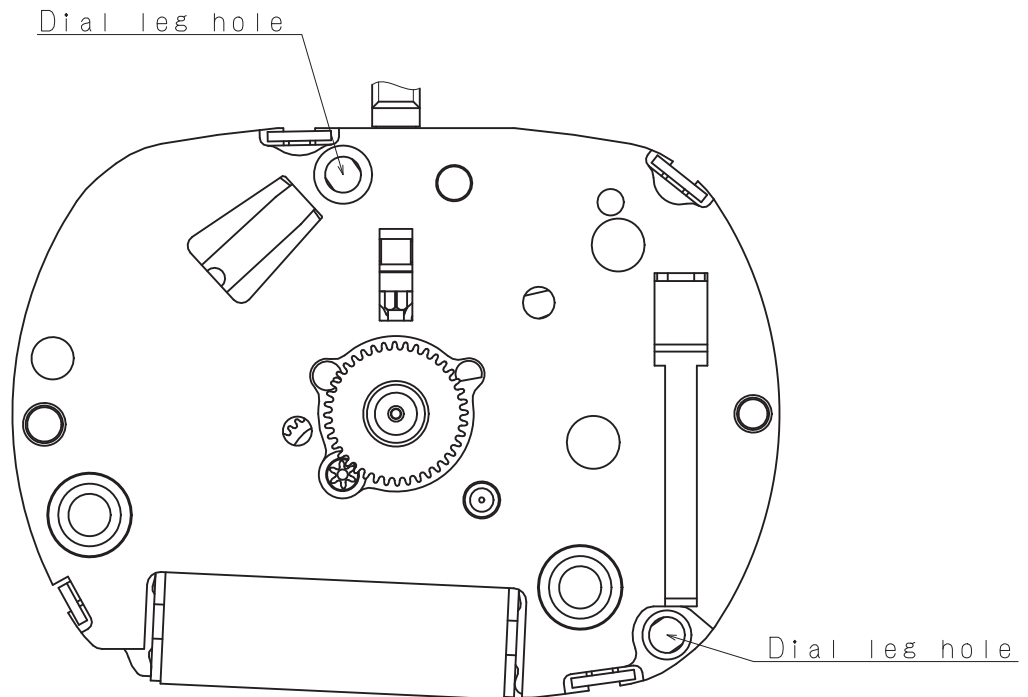
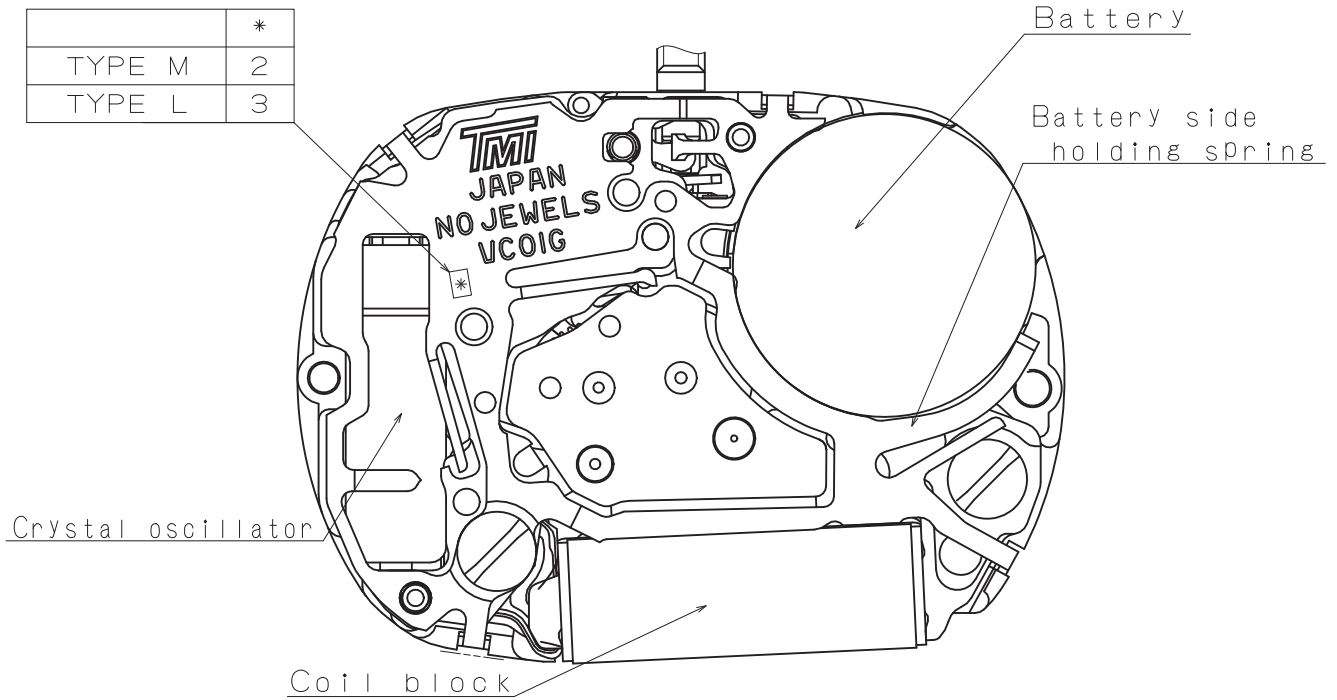
· Jewel	0 jewel
· Accuracy	Less than ± 20 seconds / month (Normal temperature range)
· Battery life	Approx. 3 years
· Regulation hands unbalance	Hour hand : Less than $0.60 \mu\text{N}\cdot\text{m}$ (60 mg·mm) Minute hand : Less than $0.40 \mu\text{N}\cdot\text{m}$ (40 mg·mm) Second hand : Less than $0.045 \mu\text{N}\cdot\text{m}$ (4.5 mg·mm)

2. USE AND TEST CONDITION

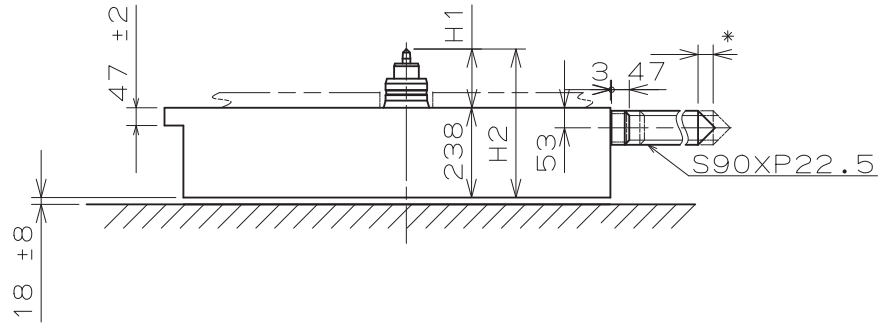
· Battery	SR521SW	(Recommended battery is SEIZAIKEN)
· Operation temperature range	From - 5 °C to + 50 °C	
· Antimagnetic	$\geq 1600 \text{ A / m}$	(Direct current magnetic field)
· Test of accuracy	10 seconds	(Duration of measurement)

*** All specifications are subject to change without notice.**

	*
TYPE M	2
TYPE L	3

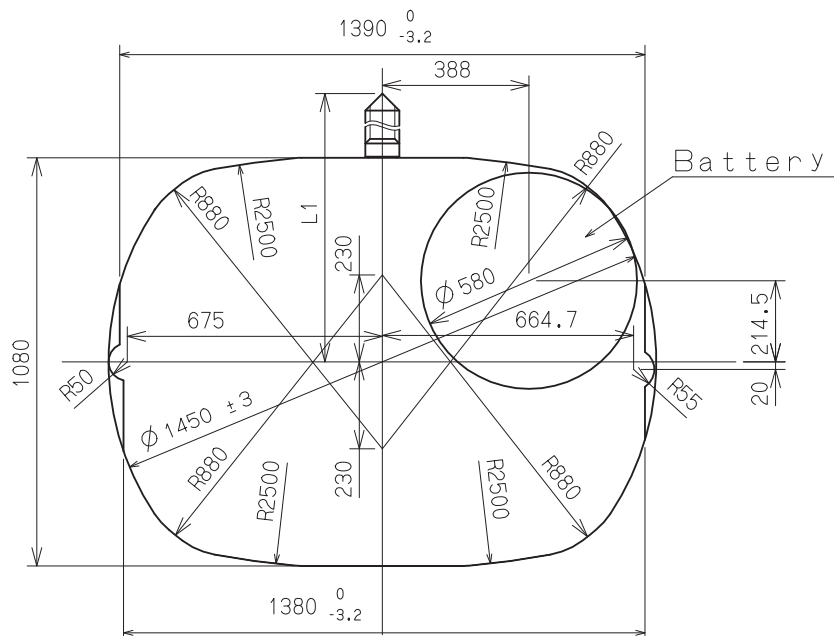


Battery Side holding spring Type. * Pull out stroke 40

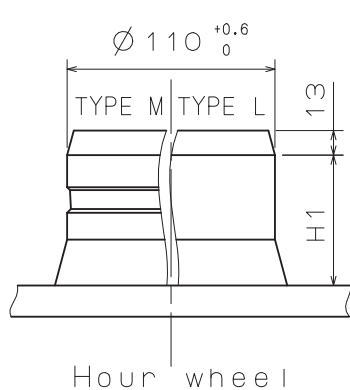


Center post 中心柱位		TYPE M 一般針高	TYPE L 高針
Maximum height from main plate surface 與機芯平面的最大高度	H1	155	185
Total height incl. movement 機芯總高度	H2	393	423

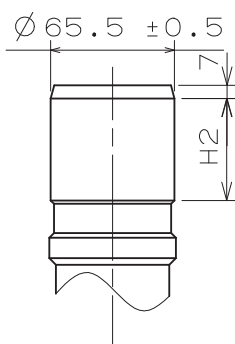
Hand Setting Stem	TYPE A	TYPE B
L1	1648	2140



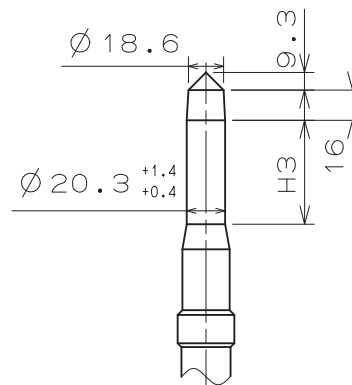
Hour hand unbalance $\leq 0.6 \mu\text{N}\cdot\text{m}$ (60mg·mm)
 Minute hand unbalance $\leq 0.4 \mu\text{N}\cdot\text{m}$ (40mg·mm)
 Second hand unbalance $\leq 0.045 \mu\text{N}\cdot\text{m}$ (4.5mg·mm)



Hour wheel

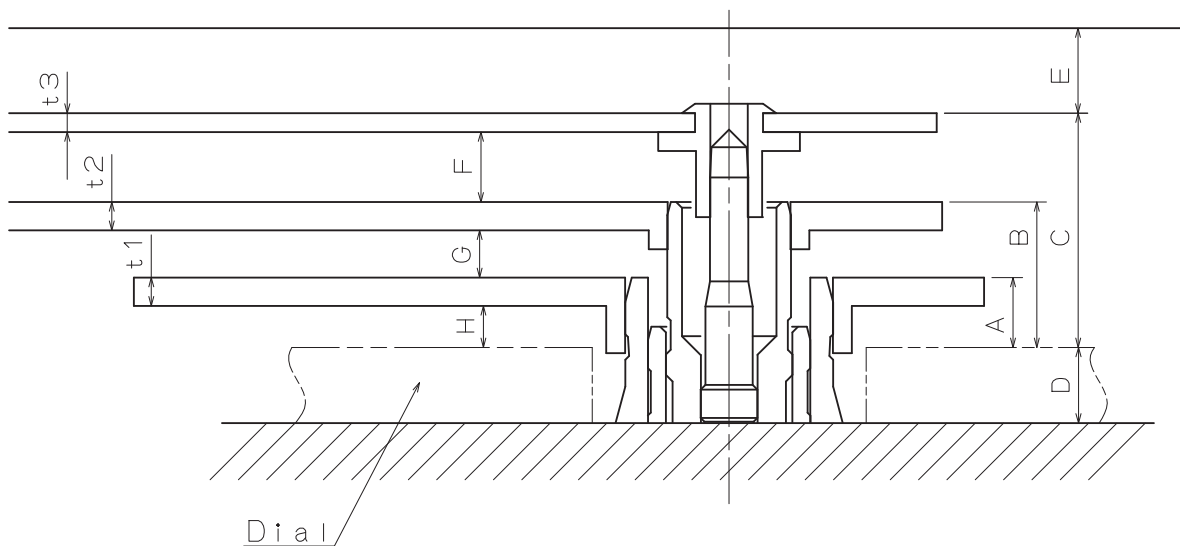


Center wheel

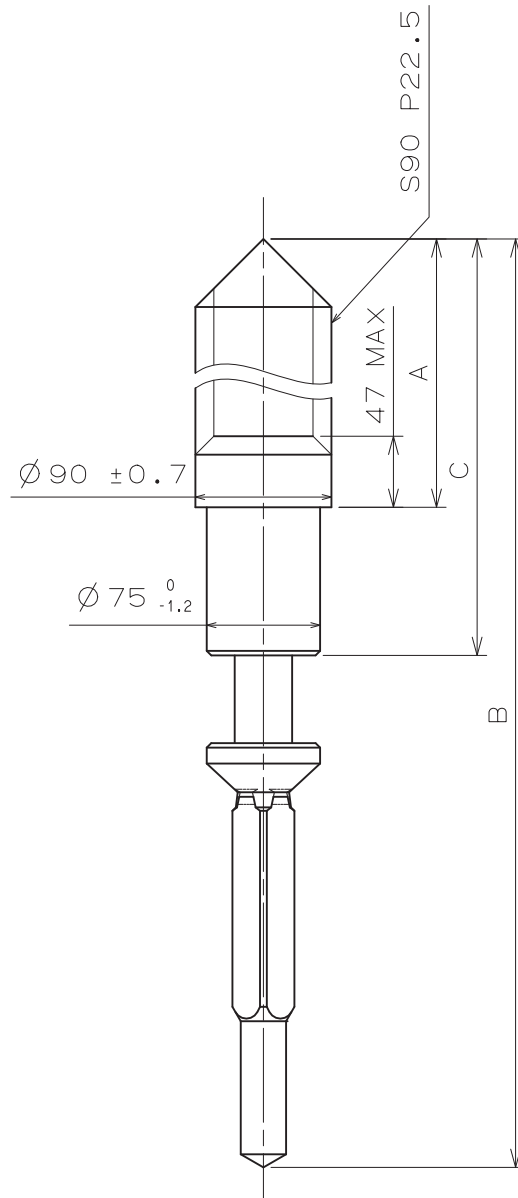


Fourth wheel

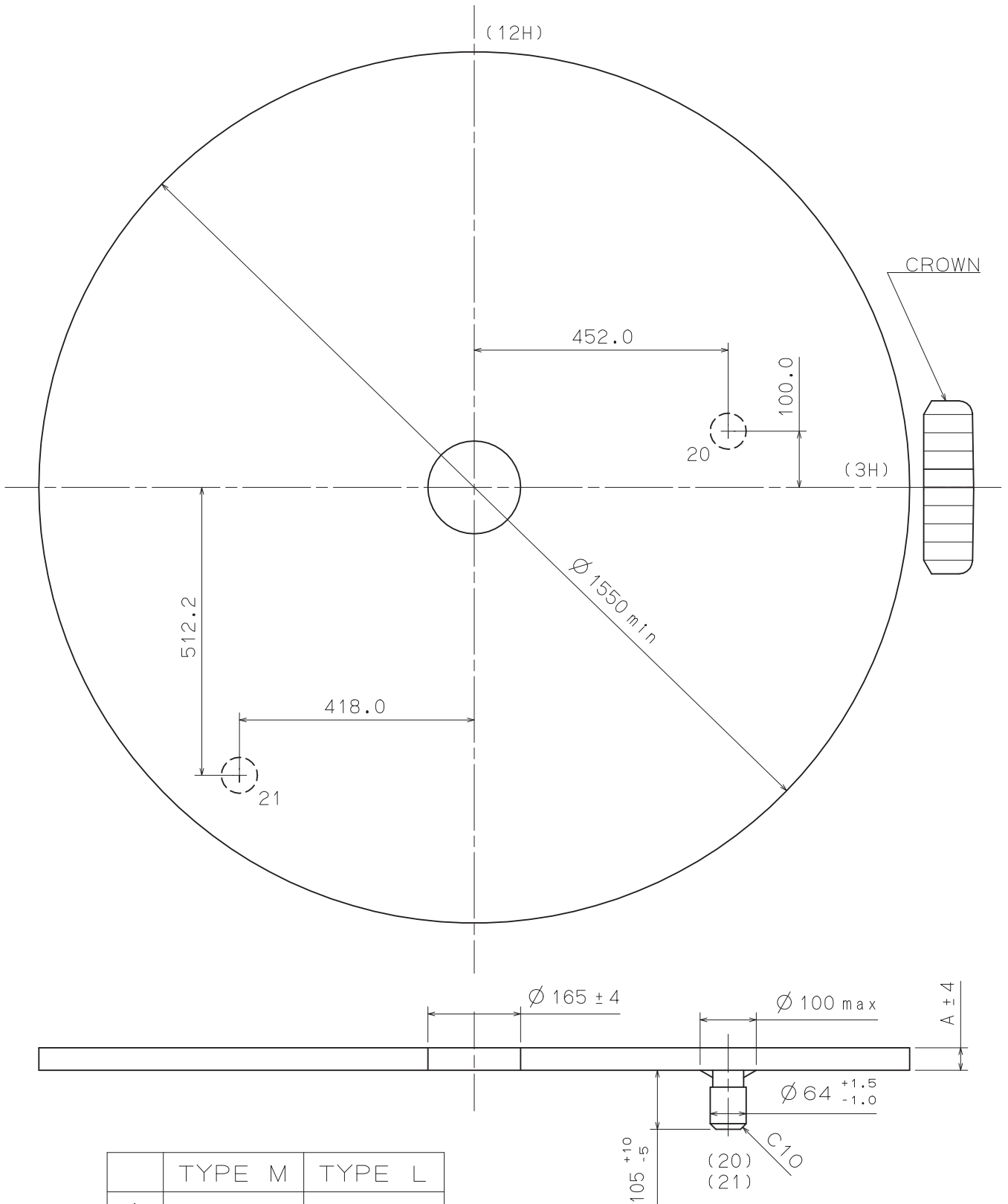
	Part No.			Dimension		
	Hour wheel 時針輪	Center wheel 分針輪	Fourth wheel 秒針輪	H1	H2	H3
TYPE M 一般針高	0271 298	0270 298	0241 133	69	54	55
TYPE L 高針	0271 304	0270 130	0241 393	99	57	85



	A	B	C	D	E	F	G	H	t1	t2	t3
TYPE M 一般針高	37	77	124	40	45	37	25	22	15	15	10
TYPE L 高針	35	78	122	72	45	34	28	20	15	15	10



	Part No.	A	B	C
TYPE A	0351 173	1105	1542	1203
TYPE B	0351 120	1597	2034	1695

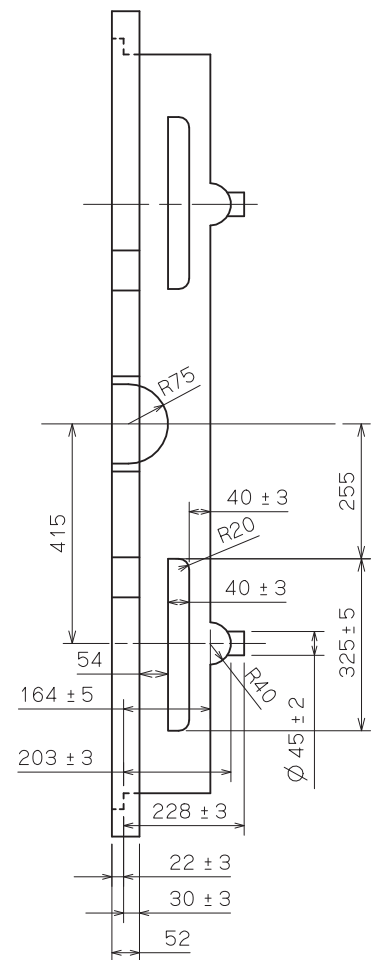
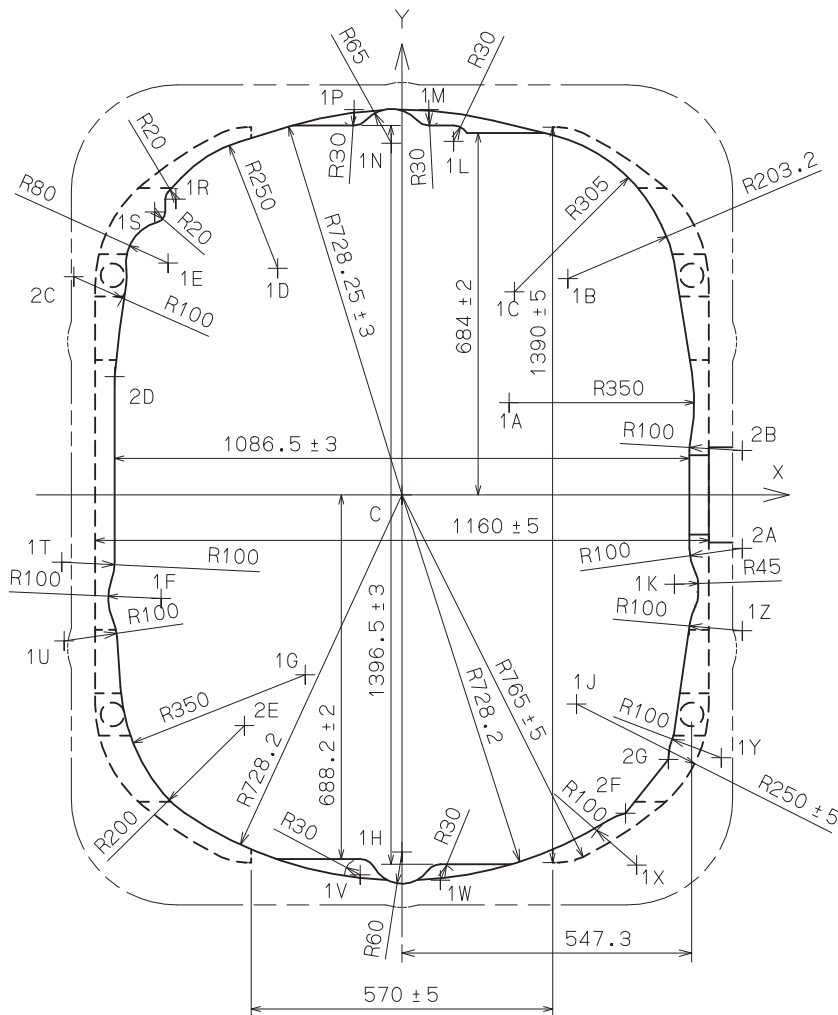


Casing Ring - 1

VC01G

	X	Y
C	0.00	0.00
1A	202.41	174.30
1B	313.37	408.84
1C	212.28	383.98
1D	-235.18	428.13
1E	-442.14	438.08
1F	-455.42	-195.67
1G	-182.96	-339.98
1H	0.00	-675.00
1J	330.00	-395.38
1K	515.00	-168.75
1L	97.37	668.25
1M	50.61	728.25
1N	-20.00	664.70
1P	-90.61	728.25
1R	-427.69	559.04
1S	-467.69	534.76

	X	Y
1T	-643.25	-126.97
1U	-638.58	-276.00
1V	-78.93	-718.25
1W	72.56	-728.25
1X	443.60	-699.44
1Y	603.57	-496.83
1Z	643.12	-256.64
2A	643.25	-101.10
2B	643.25	83.97
2C	-620.34	412.66
2D	-543.25	223.53
2E	-298.13	-436.08
2F	422.50	-601.69
2G	503.61	-499.80



Unit : 1=1/100mm

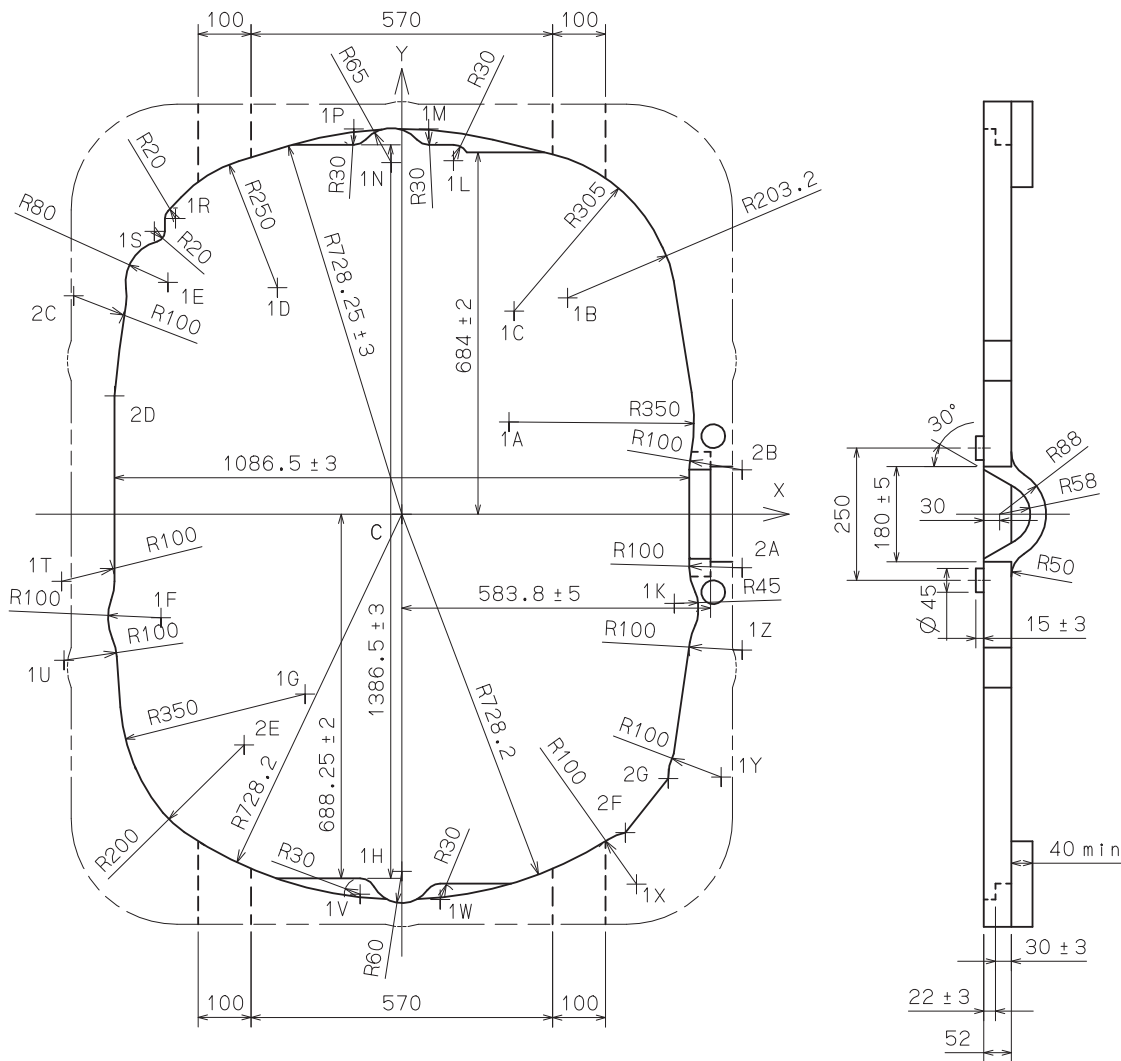
Version : 1

Casing Ring - 2

VC01G

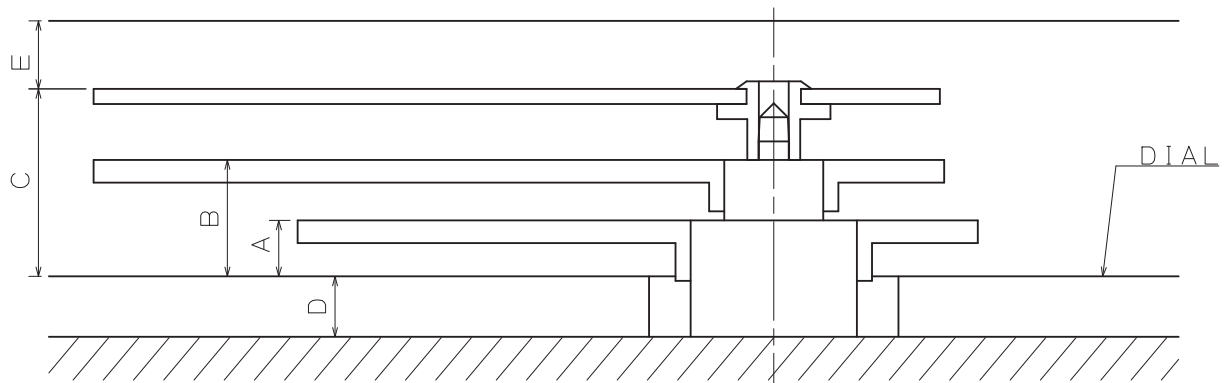
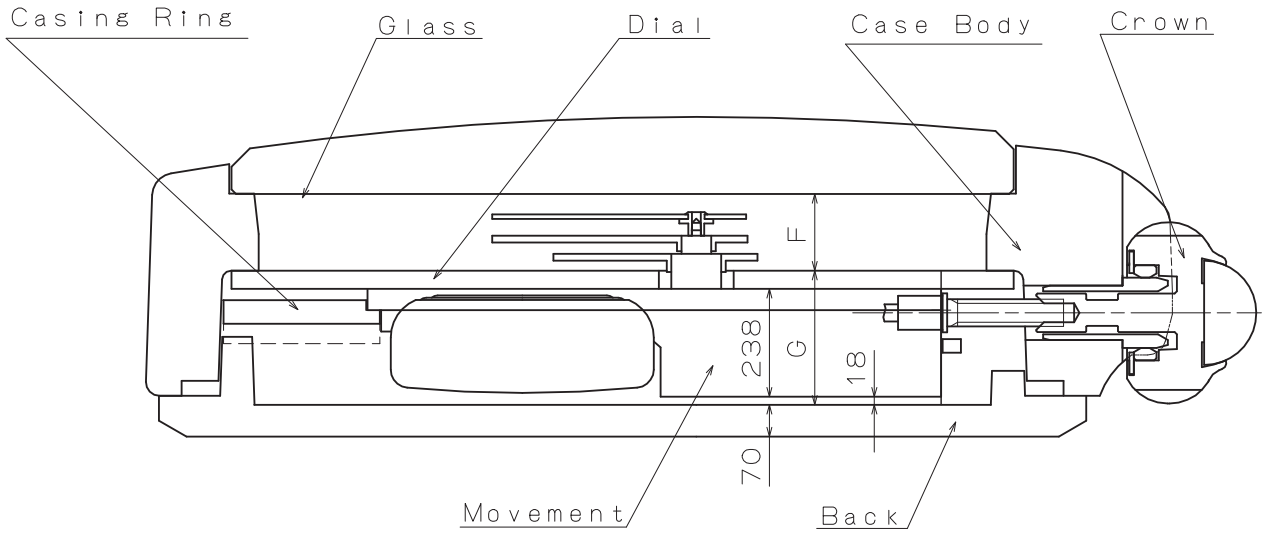
	X	Y
C	0.00	0.00
1A	202.41	174.30
1B	313.37	408.84
1C	212.28	383.98
1D	-235.18	428.13
1E	-442.14	438.08
1F	-455.42	-195.67
1G	-182.96	-339.98
1H	0.00	-675.00
1K	515.00	-168.75
1L	97.37	668.25
1M	50.61	728.25
1N	-20.00	664.70
1P	-90.61	728.25
1R	-427.69	559.04
1S	-467.69	534.76

	X	Y
1T	-643.25	-126.97
1U	-638.58	-276.00
1V	-78.93	-718.25
1W	72.56	-728.25
1X	443.60	-699.44
1Y	603.57	-496.83
1Z	643.12	-256.64
2A	643.25	-101.10
2B	643.25	83.97
2C	-620.34	412.66
2D	-543.25	223.53
2E	-298.13	-436.08
2F	422.50	-601.69
2G	503.61	-499.80



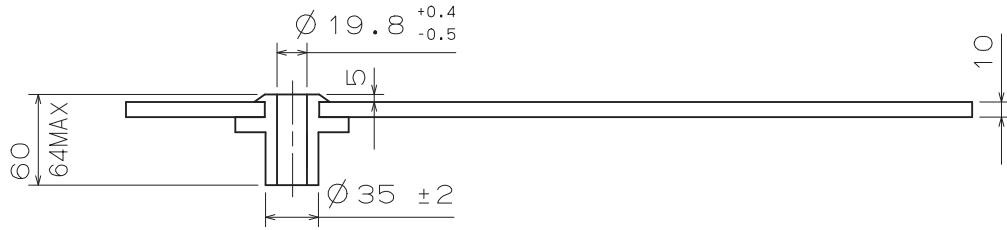
Unit : 1=1/100mm

Version : 1

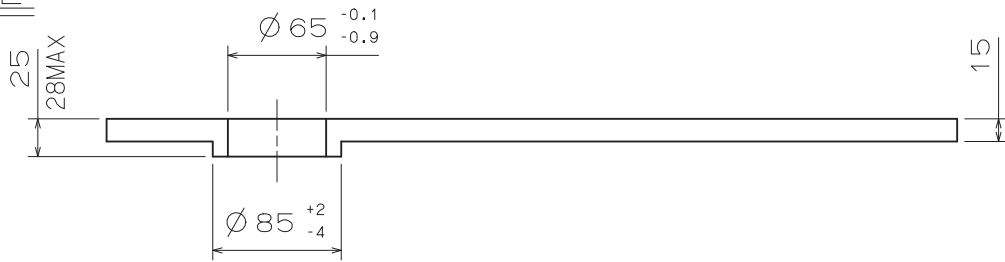


	A	B	C	D	E	F	G
TYPE M	37	77	124	40	45	169	296
TYPE L	35	78	122	72	45	167	328

SECOND



MINUTE



HOUR

