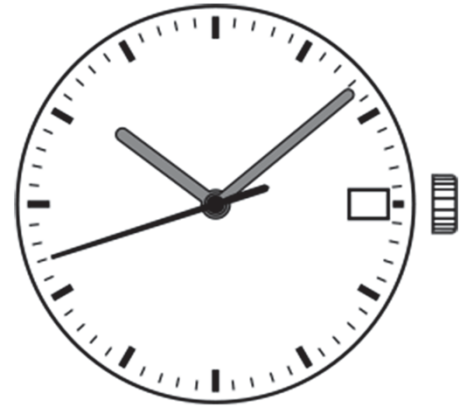


## Watch Movement Specification and Drawing

Slim / Small Movement

# VJ22B



Movement Size: **6<sup>3</sup>/<sub>4</sub> × 8'''**  
 Diameter: **Φ18.50mm**  
 Height: **2.71mm**

Items	Ver.	Items	Ver.
Specification	1		
Appearance	1		
Casing	1		
Hand Fitting	1		
Hand Setting Stem	1		
Dial - 1	1		
Dial - 2	1		
Casing Ring	1		
Assembly Plan	1		
Hands	1		

## CAL.VJ22B 6¼ X 8 Ligne Quartz Movement

### Three Hands with Date

#### 1. FUNCTION

- |                              |   |
|------------------------------|---|
| · Jewel                      | 0 jewel   |
| · Accuracy                   | Less than $\pm 20$ seconds / month (Normal temperature range)   |
| · Battery life               | Approx. 3 years   |
| · Regulation hands unbalance | Hour hand : Less than $0.30 \mu\text{N}\cdot\text{m}$ ( 30 mg·mm )<br>Minute hand : Less than $0.30 \mu\text{N}\cdot\text{m}$ ( 30 mg·mm )<br>Second hand : Less than $0.07 \mu\text{N}\cdot\text{m}$ ( 7 mg·mm ) |
| · Additional function        | Date display with quick date correction   |

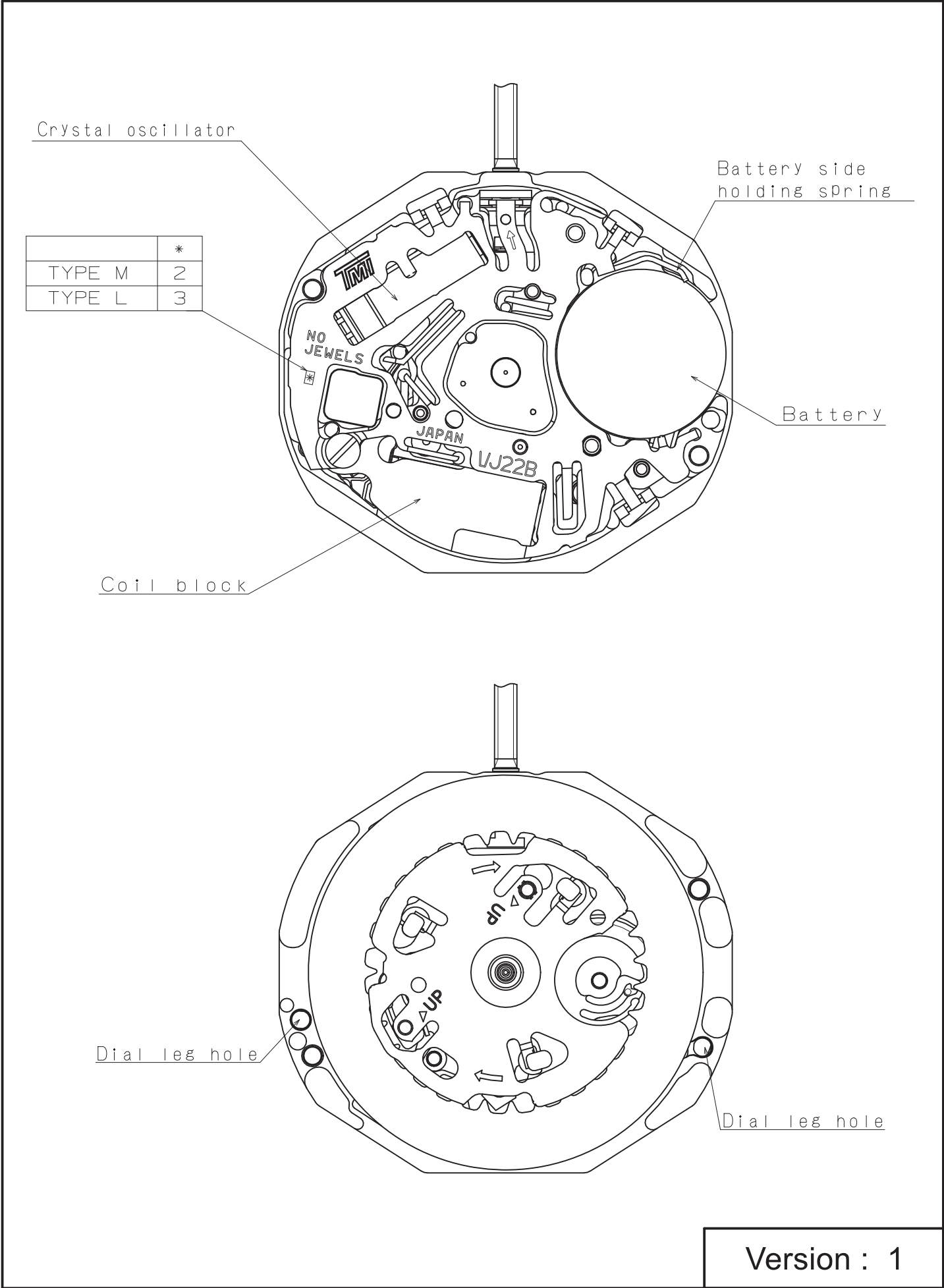
#### 2. USE AND TEST CONDITION

- |                               |  |                                    |
|-------------------------------|--|------------------------------------|
| · Battery                     | SR621SW  | (Recommended battery is SEIZAIKEN) |
| · Operation temperature range | From $- 5 \text{ }^\circ\text{C}$ to $+ 50 \text{ }^\circ\text{C}$ |                                    |
| · Antimagnetic                | $\geq 1600 \text{ A / m}$  | (Direct current magnetic field)    |
| · Test of accuracy            | 10 seconds   | (Duration of measurement)          |

**\* All specifications are subject to change without notice.**

# Appearance

# VJ22B

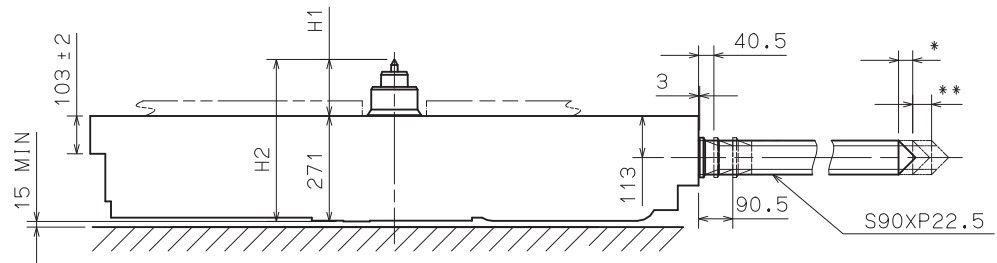


Version : 1

Battery Side holding Spring Type.

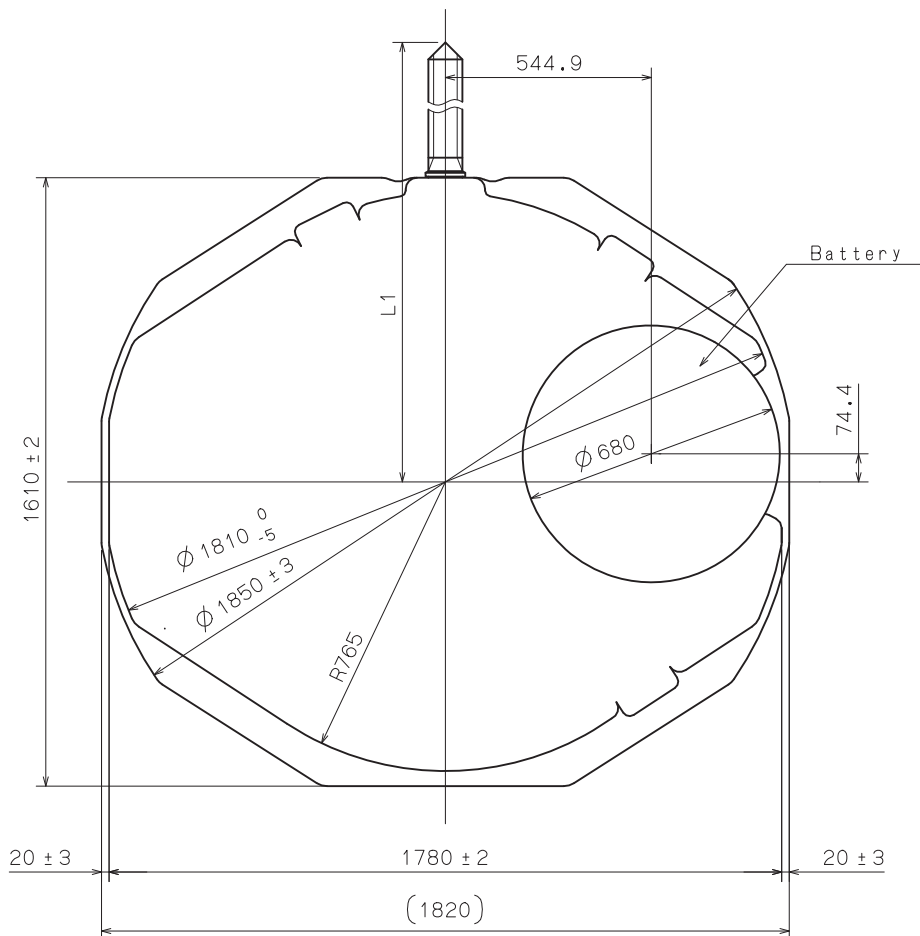
\* First Pull out Stroke 37.5

\*\* Second Pull out Stroke 50



Center post 中心柱位		TYPE M 一般針高	TYPE L 高針
Maximum height from main plate surface 與機芯平面的最大高度	H1	149.7	208.8
Total height incl. movement 機芯總高度	H2	420.7	479.8

Hand Setting Stem	TYPE A	TYPE B
L1	2003	2413



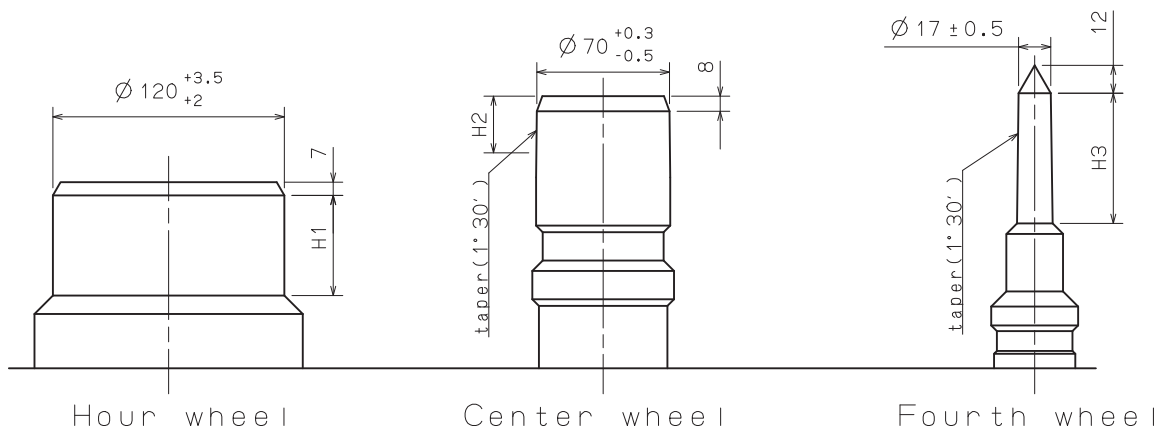
Unit : 1=1/100mm

Version : 1

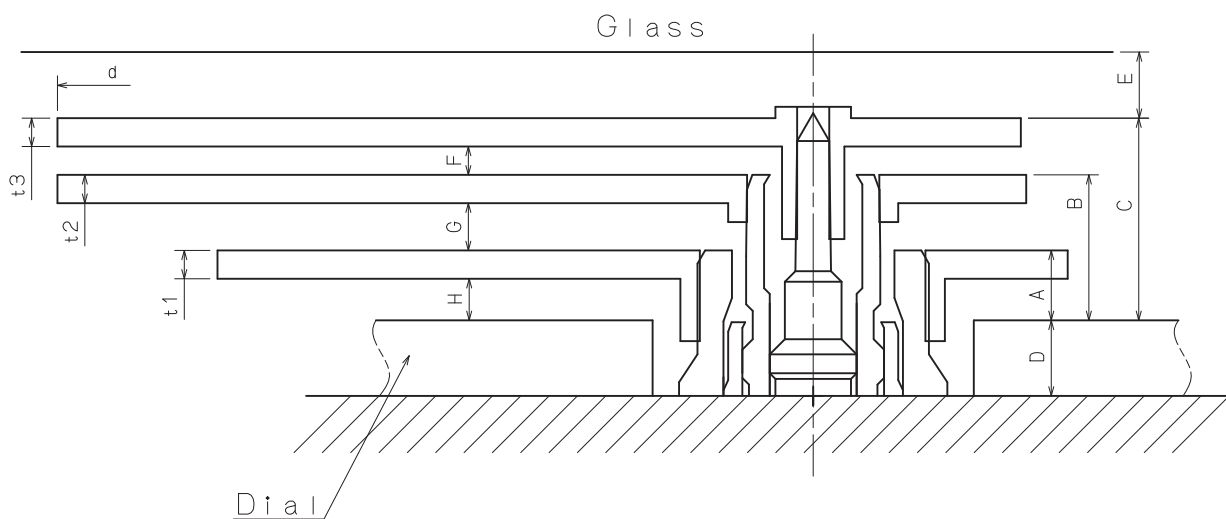
Hour hand unbalance  $\leq 0.3\mu\text{N}\cdot\text{m}$  (30mg·mm)

Minute hand unbalance  $\leq 0.3\mu\text{N}\cdot\text{m}$  (30mg·mm)

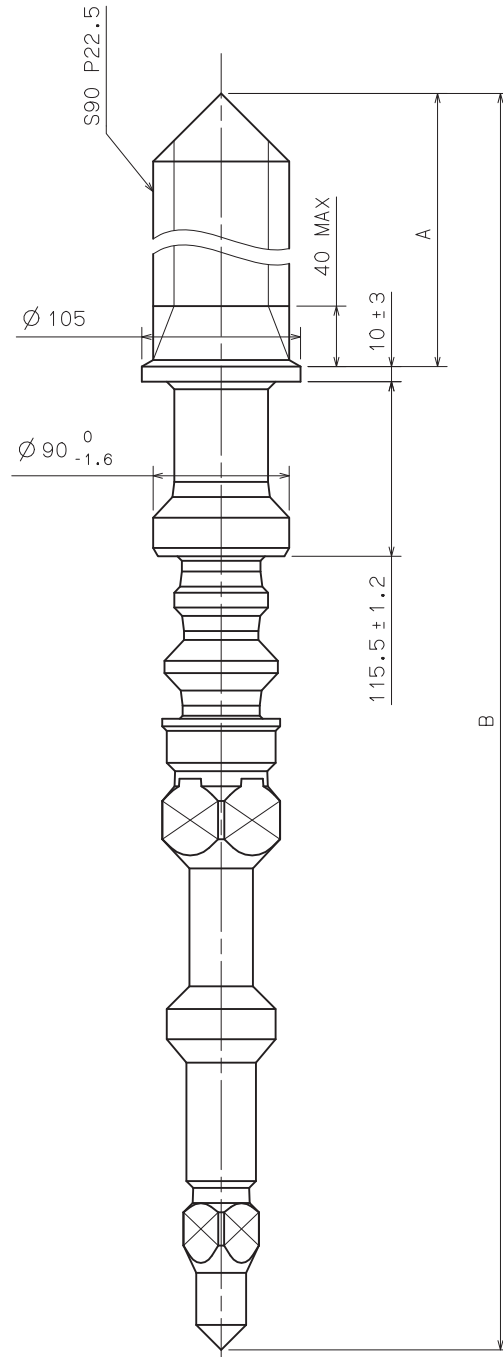
Second hand unbalance  $\leq 0.07\mu\text{N}\cdot\text{m}$  (7mg·mm)



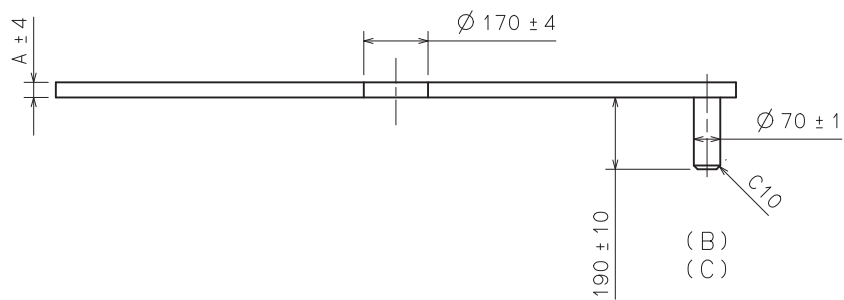
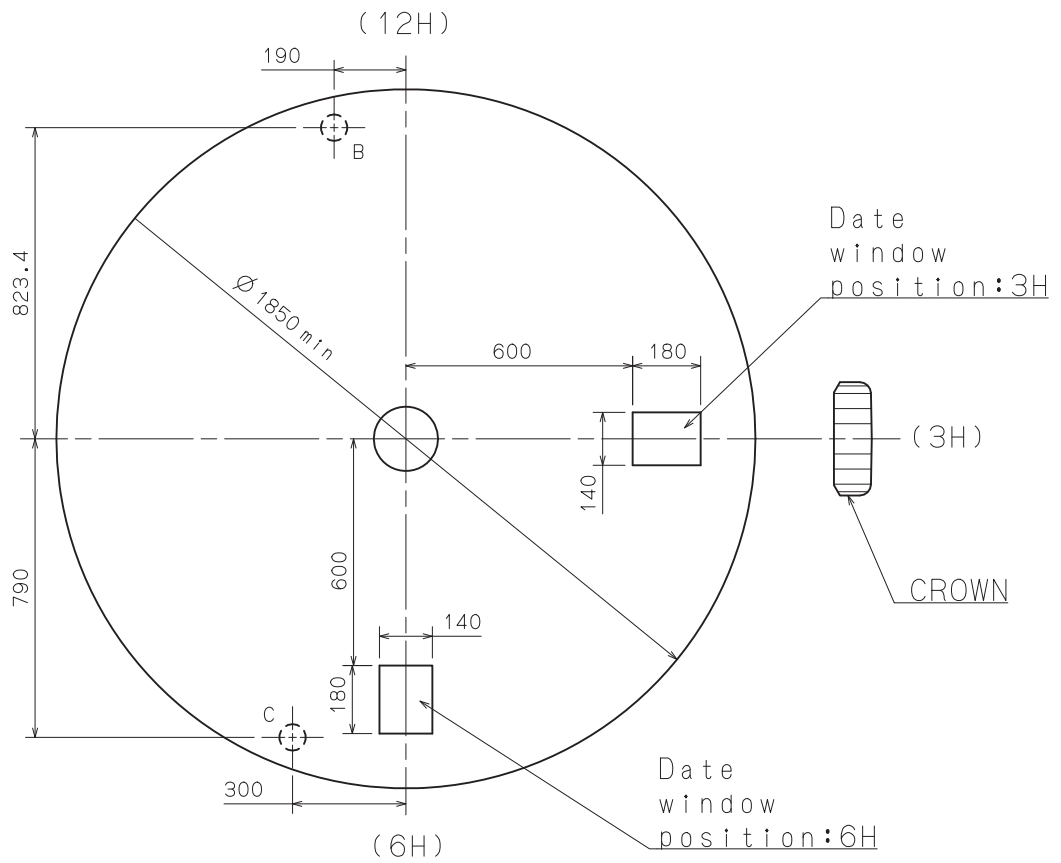
	Part No.			Dimension		
	Hour wheel 時針輪	Center wheel 分針輪	Fourth wheel 秒針輪	H1	H2	H3
TYPE M 一般針高	0273 021	0221 055	0144 097	48	27	69
TYPE L 高針	0273 023	0221 058	0144 098	57	27	69



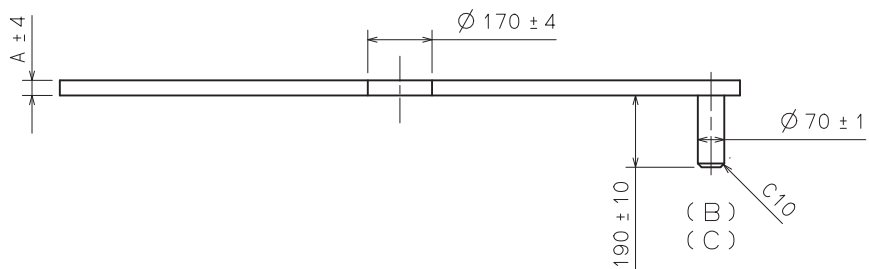
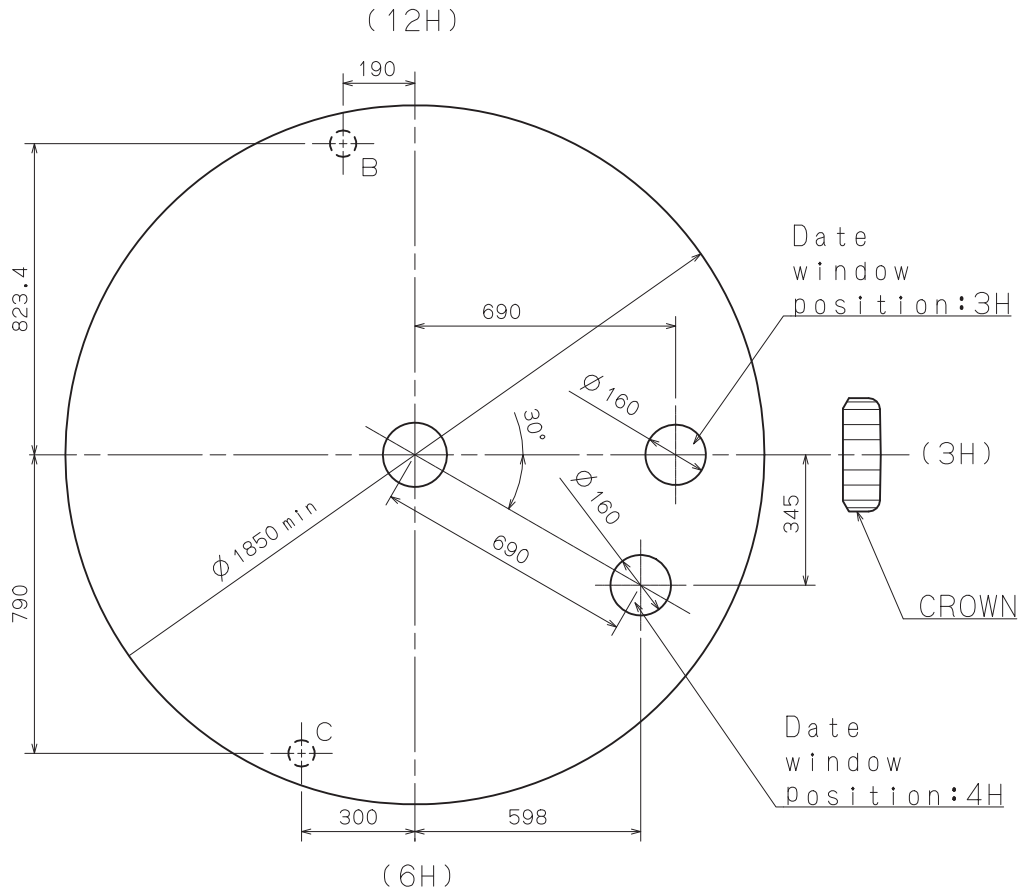
	A	B	C	D	E	F	G	H	t1	t2	t3	d
TYPE M 一般針高	37	77	107	40	35	15	25	22	15	15	15	∅ 2500
TYPE L 高針	37	86	121	85	35	20	34	22	15	15	15	∅ 2500



	Part No.	A	B
TYPE A	0351 332	1185	1835.5
TYPE B	0351 001	1595	2245.5



	TYPE M	TYPE L
A	40	85

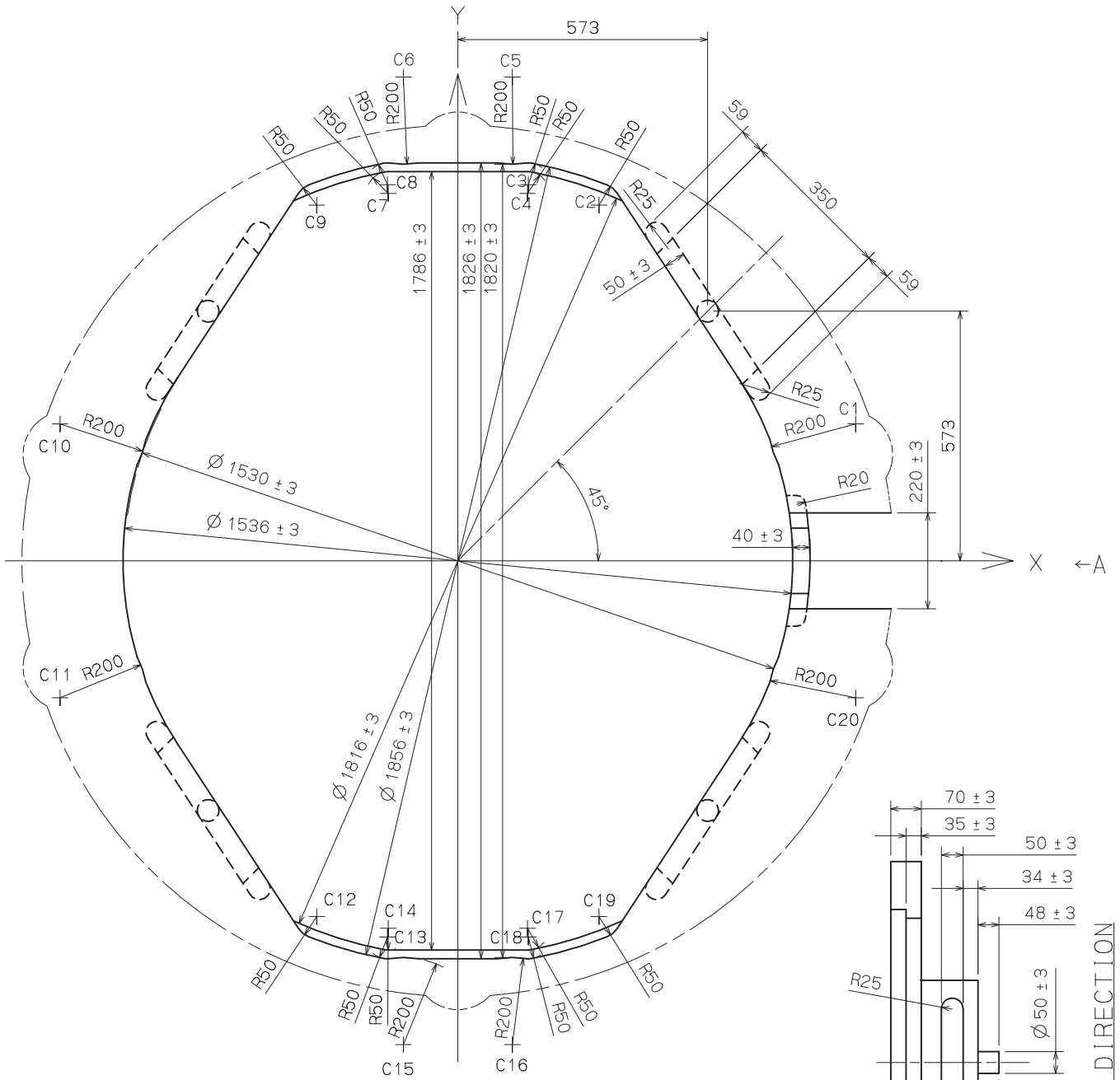


	TYPE M	TYPE L
A	40	85



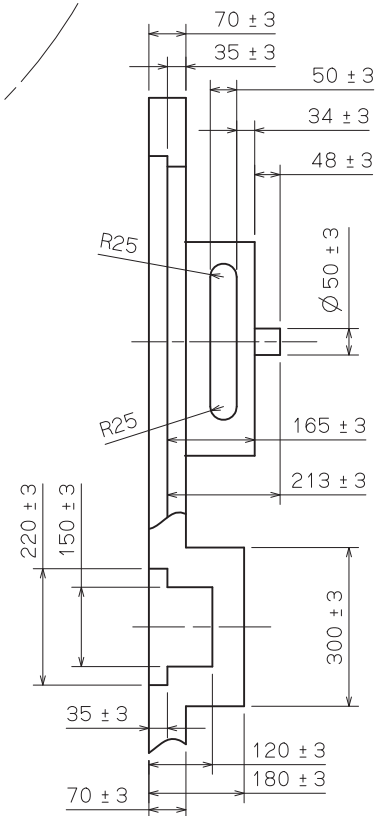
# Casing Ring

VJ22B



No.	X	Y
C1	912.44	314.13
C2	323.72	816.14
C3	161.60	863.00
C4	159.73	843.00
C5	125.00	1110.00
C6	-125.00	1110.00
C7	-159.73	843.00
C8	-161.60	863.00
C9	-323.72	816.14
C10	-912.44	314.13

No.	X	Y
C11	-912.44	-314.13
C12	-323.72	-816.14
C13	-161.60	-863.00
C14	-159.73	-843.00
C15	-125.00	-1110.00
C16	125.00	-1110.00
C17	159.73	-843.00
C18	161.60	-863.00
C19	323.72	-816.14
C20	912.44	-314.13



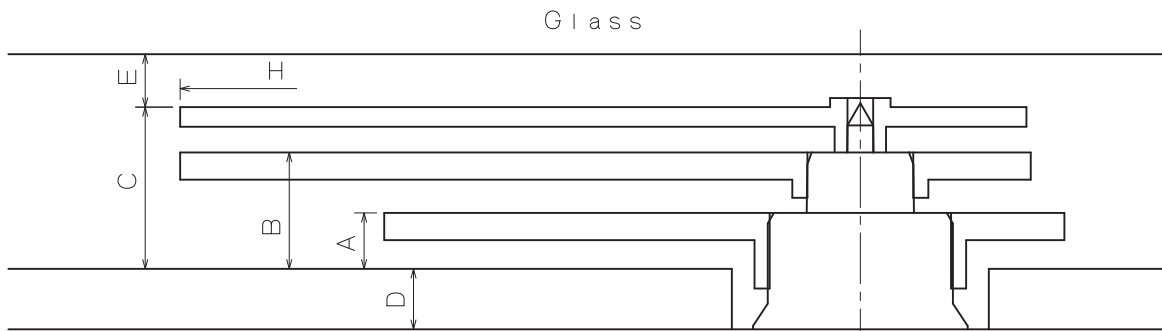
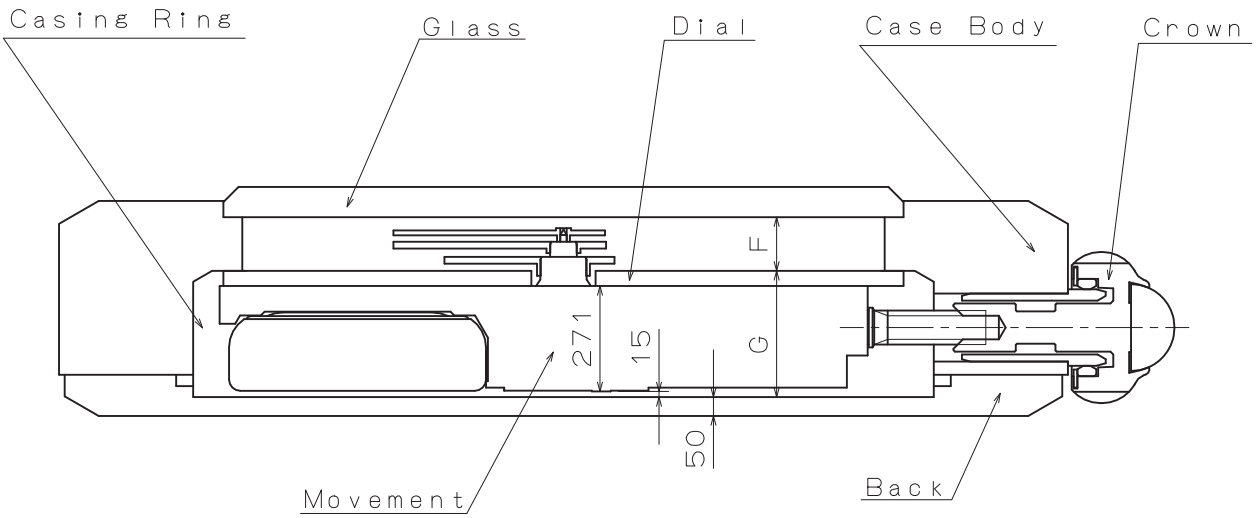
SIDE VIEW from A DIRECTION

Unit : 1=1/100mm

Version : 1

# Assembly Plan

VJ22B

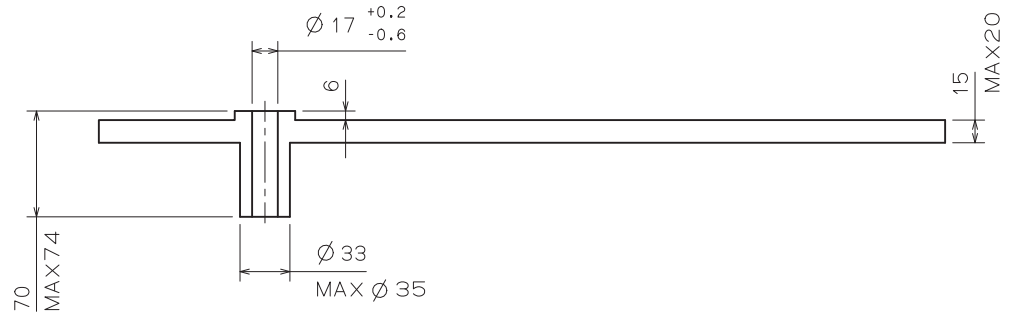


	A	B	C	D	E	F	G	H
TYPE M	37	77	107	40	35	142	326	∅ 2500
TYPE L	37	86	121	85	35	156	371	∅ 2500

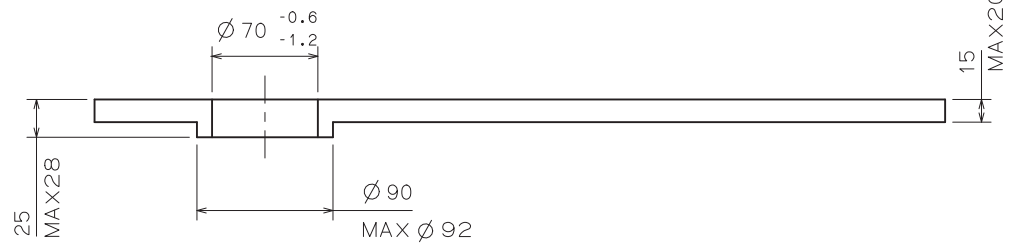
Unit : 1=1/100mm

Version : 1

SECOND



MINUTE



HOUR

