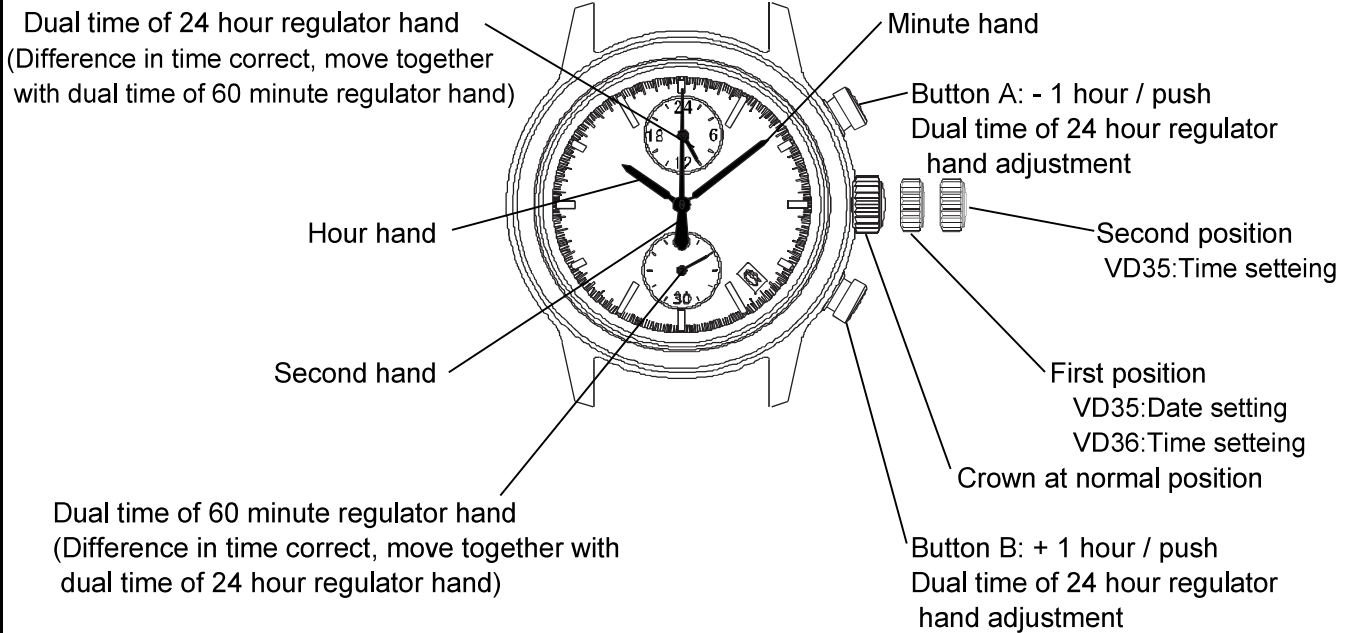


DISPLAY AND CROWN / BUTTON OPERATION

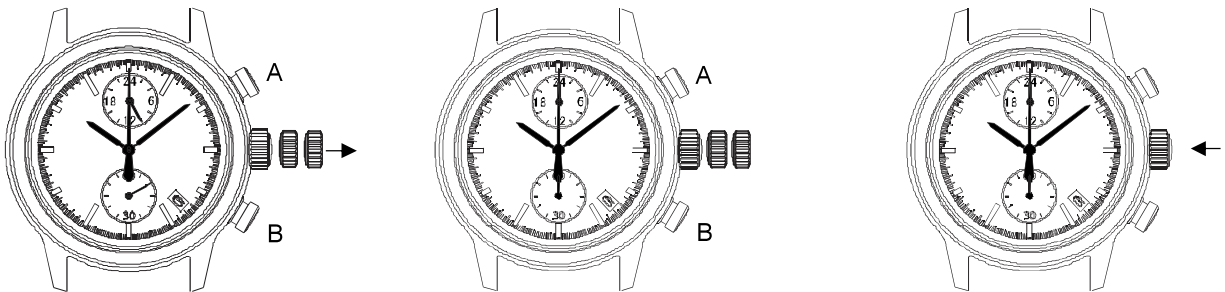


ADJUSTING THE DUAL TIME OF 24 HOUR REGULATOR AND DUAL TIME OF 60 MINUTE REGULATOR HANDS POSITION

Before setting the time, check if the dual time of 24 hour regulator and dual time of 60 minute regulator hands are in the "0"(12 o'clock) position.

If either of the dual time of 24 hour regulator and dual time of 60 minute regulator hands are not in the "0" position, reset them following the procedure below.

The battery setting and after battery change, please execute the "0" position adjustment.



1.Pull out the crown
VD35:second click
VD36:first click

2.Keep the buttons A & B pressed at the same time more than 2 seconds, and then release the buttons.

*Dual time of 24 hour regulator and dual time of 60 minute regulator hands moves. Returned to where it was.

3.Press button A or B to reset the dual time of 24 hour regulator and dual time of 60 minute regulator hands to "0"position.

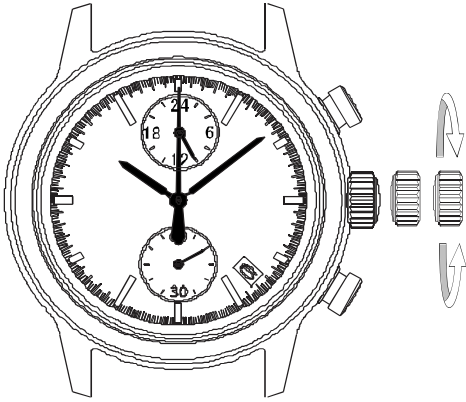
*By pressing button A the dual time of 24 hour regulator hand move clockwise. (+ 1 step / push)

*By pressing button B the dual time of 60 minute regulator hand move clockwise. (+ 1 step / push)

*Press and hold the button, possible to fast-forward modification.

4.Push the crown back to the normal position.

TIME SETTING



- 1.Pull out the crown when the second hand is at the 12 o'clock position.
[Crown position]
VD35:second click
VD36:first click
- 2.Turn the crown to set the hour and minute hands.
(Check that AM/PM is set correctly)
- 3.Push the crown back normal position in accordance with a time signal.

Note

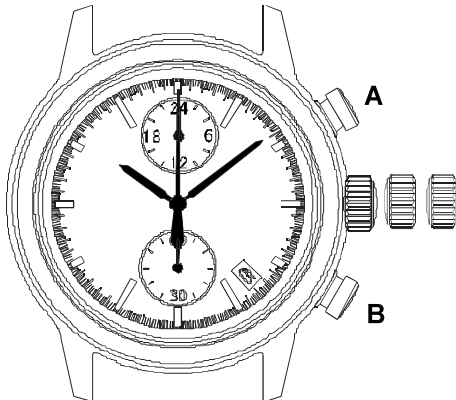
*The moment the date changes is midnight.

■ Using the time different correction

When moving to a country or area which is in a different timezone, the current time in the local time can be corrected.

- 1.Crown the normal position
- 2.To adjust the time by pressing the button A or B.
*By pressing button A the hands move counter clockwise. - 1 hour / push
*By pressing button B the hands move clockwise. + 1 hour / push

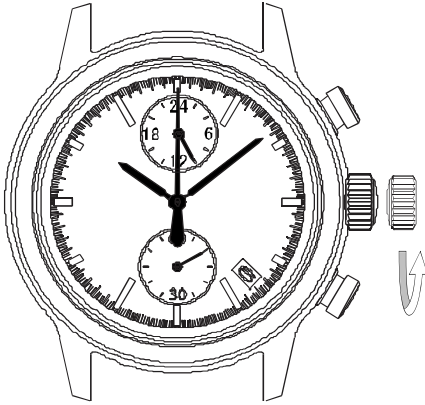
TIME SETTING (DUAL TIME OF 24 HOUR REGULATOR AND DUAL TIME OF 60 MINUTE REGULATOR HANDS)



- 1.Pull out the crown when the second hand is at the 12 o'clock position.
[Crown position]
VD35:second click
VD36:first click
- 2.To adjust the time by pressing the buttons A or B.
*By pressing button A the dual time of 24 hour regulator and dual time of 60 minute regulator hands move counter clockwise.
*By pressing button B the dual time of 24 hour regulator and dual time of 60 minute regulator hands move clockwise.
*Press and hold the button, possible to fast-forward modification.
- 3.Push the crown back in to the normal position.

DATE SETTING (Cal.VD35 only)

*Before setting the date, be sure to set the time.



- 1.Pull out the crown to the first click.
- 2.Turn the crown to clockwise until the next date appears.
- 3.Push the crown back in to the normal position.

Note

*Do not set the date during any time between 9:00 P.M. and 1:00 A.M.

Otherwise, the date may not change properly. If it is necessary to set the date during that time period, First change the time to any time outside it, set the date and then reset the correct time.