

Watch Movement Specification and Drawing

Sweep Second Multi-Eye

**VH61A**



Movement Size: **10 1/2"**  
 Diameter: **Φ23.70mm**  
 Height: **3.45mm**

Items	Ver.	Items	Ver.
Specification	1		
Appearance	1		
Casing	1		
Hand Fitting	1		
Hand Setting Stem	1		
Dial	1		
Casing Ring	1		
Assembly Plan	1		
Hands ( For TYPE S )	1		
Hands ( For TYPE M / L )	1		

## CAL.VH61A 10½ Ligne Quartz Movement

### Three Hands ( 1/4 Center Second Hand ) with 2 eyes Small 24 Hour Indicator & Date Hands

#### 1. FUNCTION

- Jewel 2 jewels
- Accuracy Less than  $\pm 15$  seconds / month (Normal temperature range)
- Battery life Approx. 2 years
- Regulation hands unbalance
  - Hour hand : Less than  $0.50 \mu\text{N}\cdot\text{m}$  ( 50 mg·mm )
  - Minute hand : Less than  $0.80 \mu\text{N}\cdot\text{m}$  ( 80 mg·mm )
  - Second hand : Less than  $0.30 \mu\text{N}\cdot\text{m}$  ( 30 mg·mm )
  - Small hands : Less than  $0.10 \mu\text{N}\cdot\text{m}$  ( 10 mg·mm )  
(Date & 24 hour indicator hands)
- Additional function
  - Date display with quick date correction
  - 24 hour indicator (Synchronized regular hour hand)

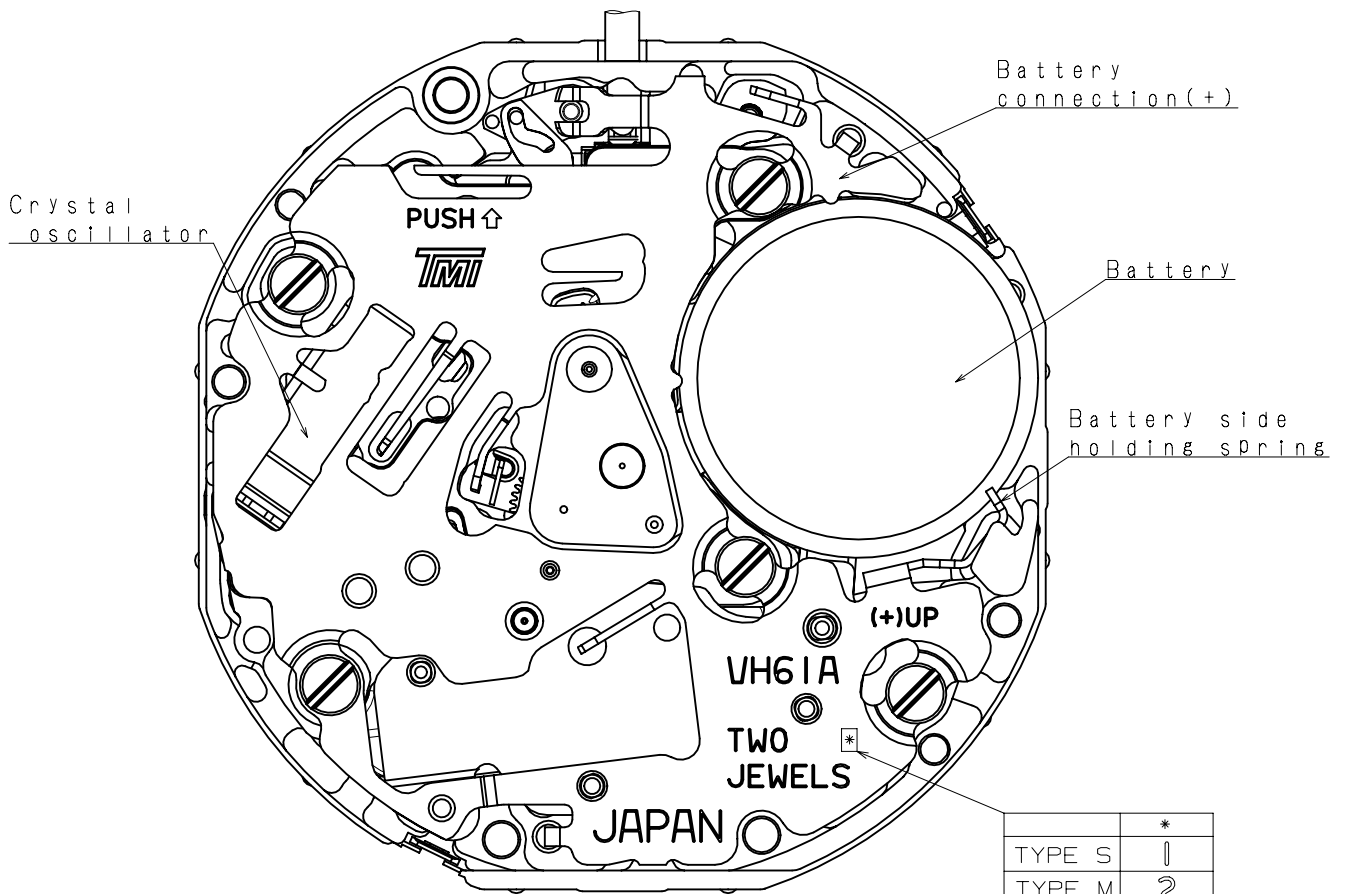
#### 2. USE AND TEST CONDITION

- Battery SR920SW (Recommended battery is SEIZAIKEN)
- Operation temperature range From  $- 5 \text{ }^{\circ}\text{C}$  to  $+ 50 \text{ }^{\circ}\text{C}$
- Antimagnetic  $\geq 1600 \text{ A / m}$  (Direct current magnetic field)
- Test of accuracy 10 seconds (Duration of measurement)

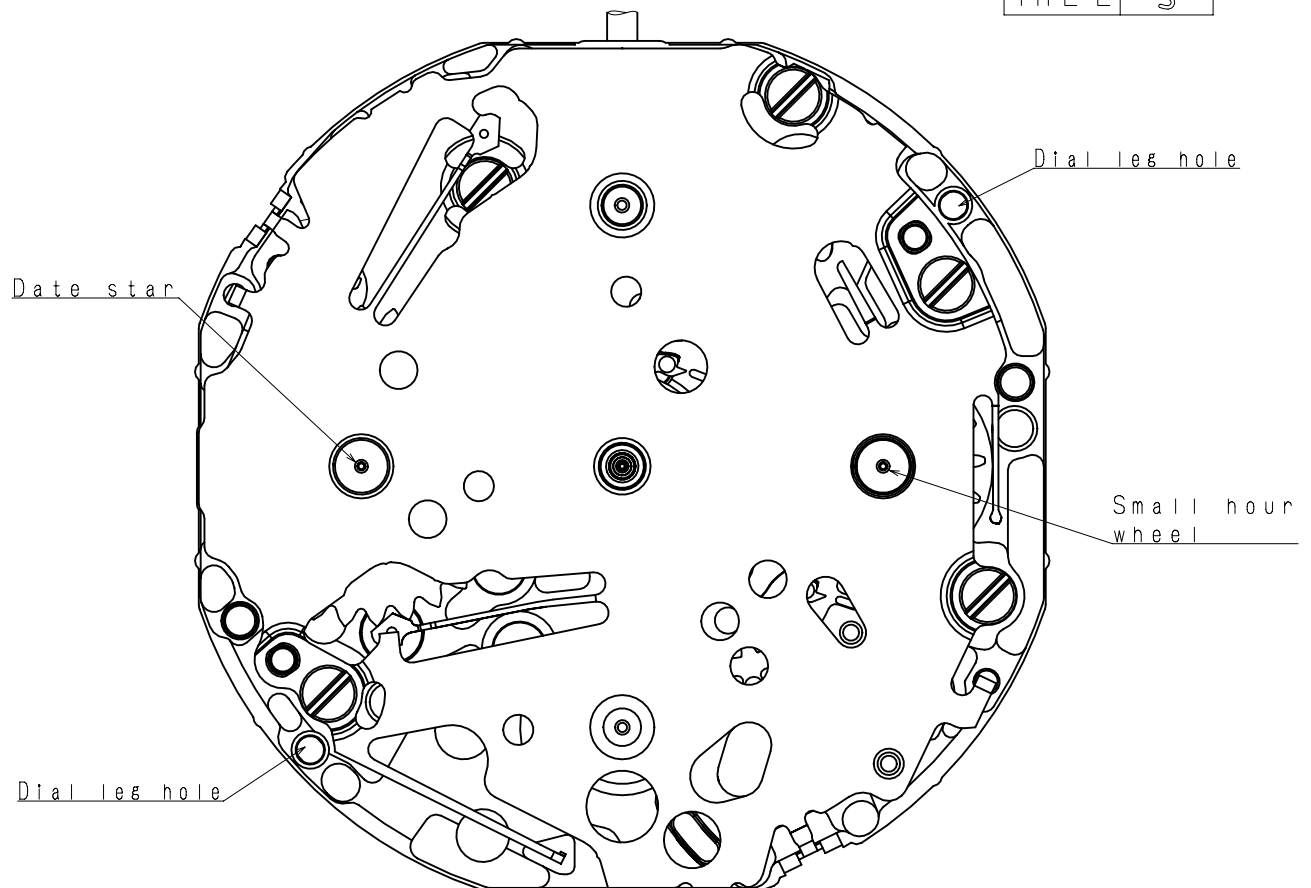
**\* All specifications are subject to change without notice.**

# Appearance

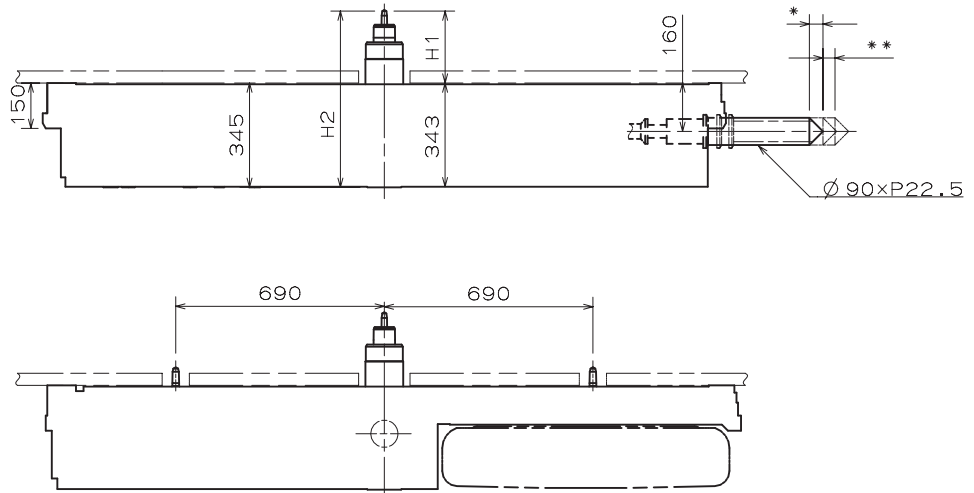
# VH61A



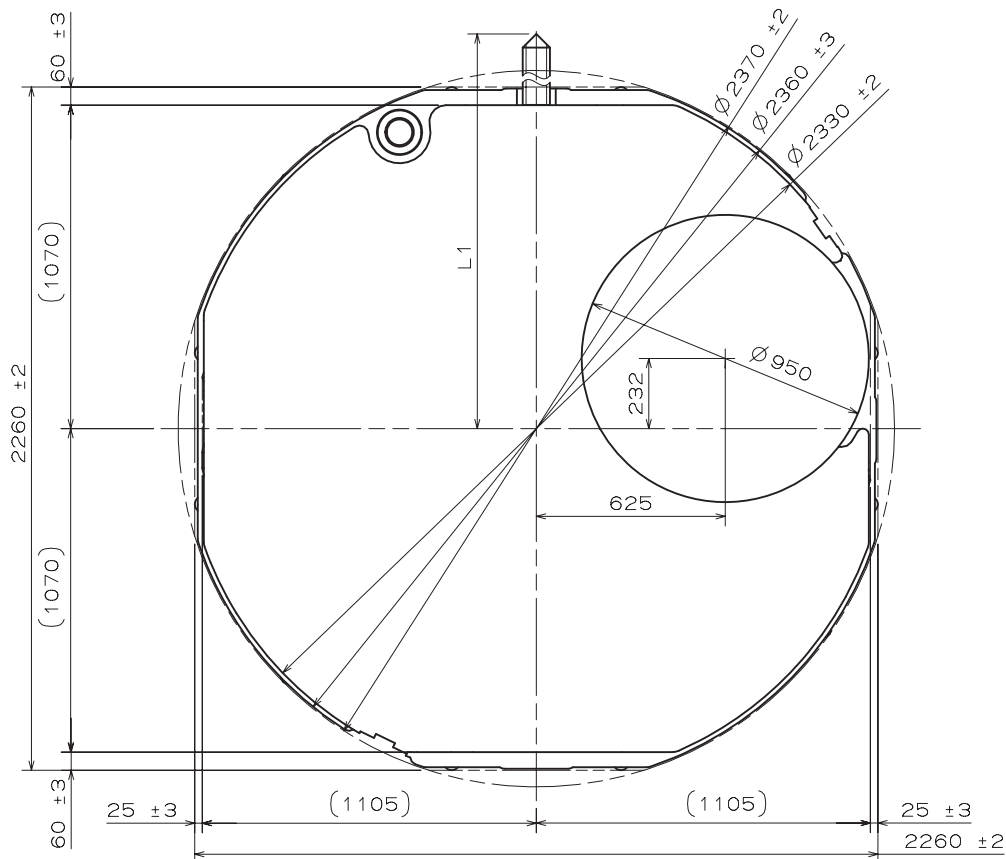
	*
TYPE S	1
TYPE M	2
TYPE L	3



\* First pull out stroke 45  
 \*\* Second pull out stroke 39.8



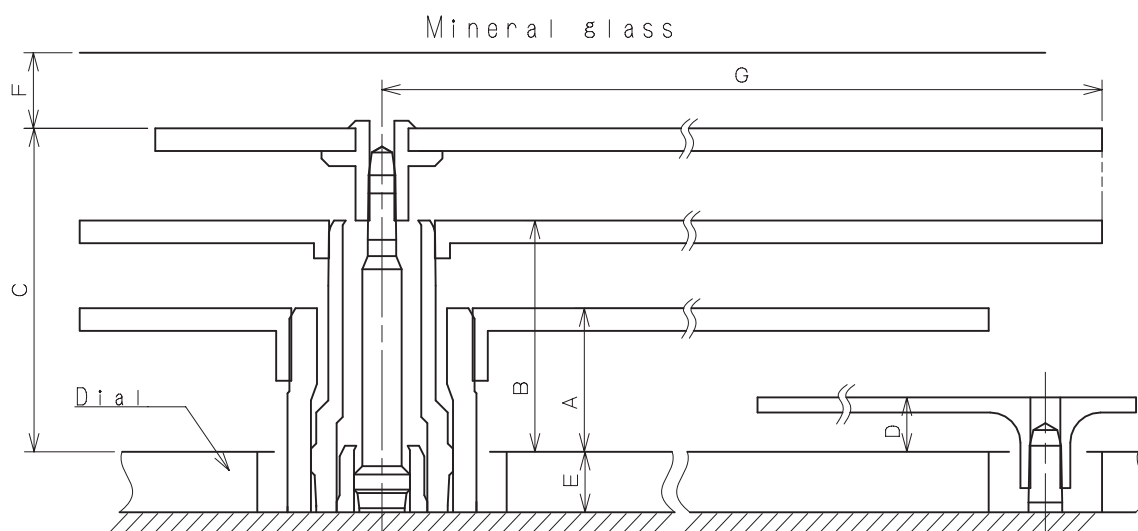
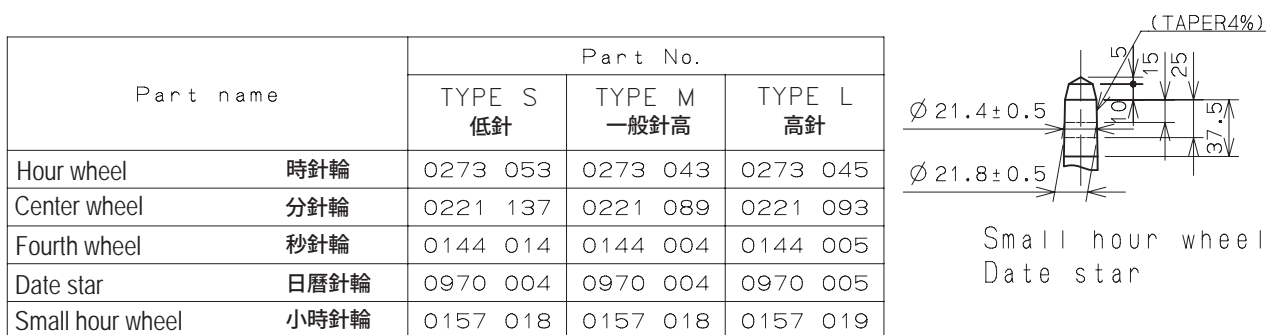
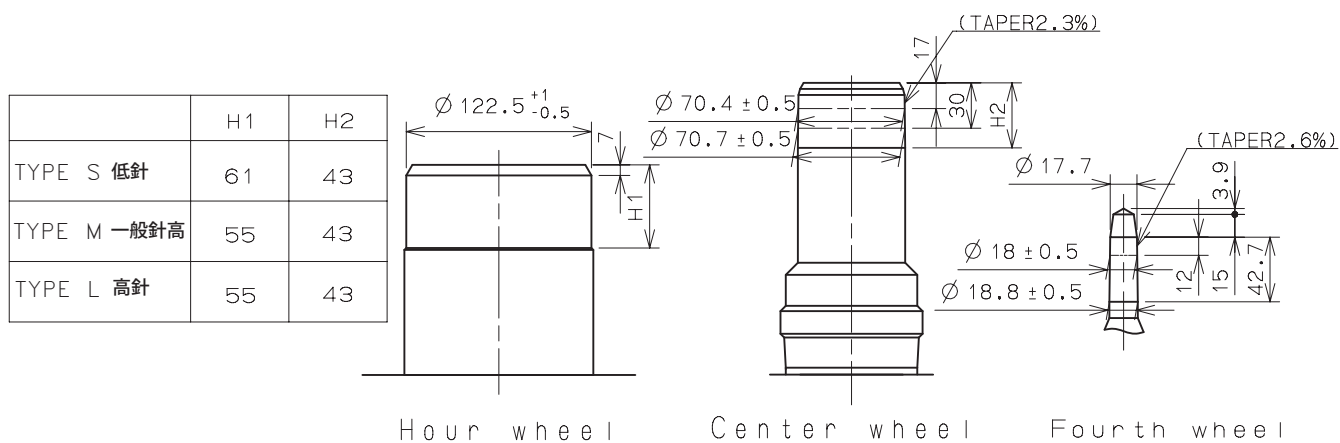
Center post 中心柱位		TYPE S	TYPE M	TYPE L	Hand Setting Stem	TYPE A	TYPE B
		低針	一般針高	高針			
Maximum height from main plate surface 與機芯平面的最大高度	H1	185	238	293	L1	2436	3012
Total height incl. movement 機芯總高度	H2	530	583	638			



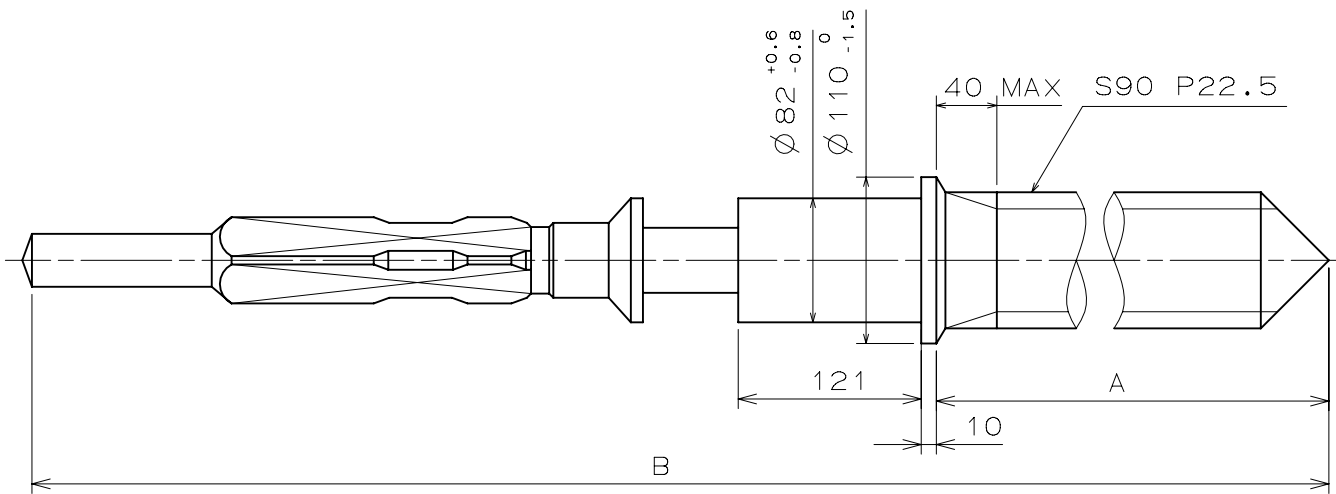
Unit : 1=1/100mm

Version : 1

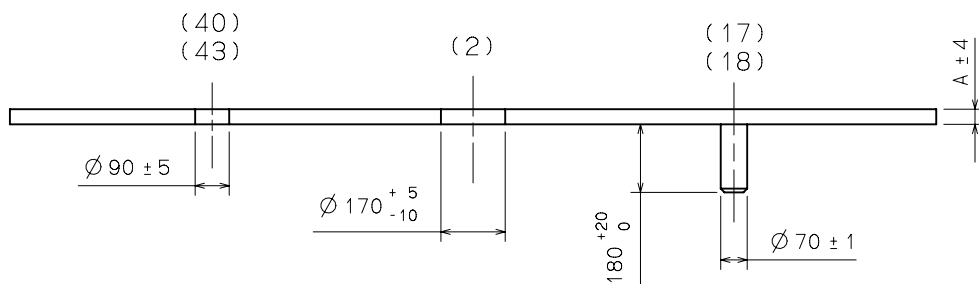
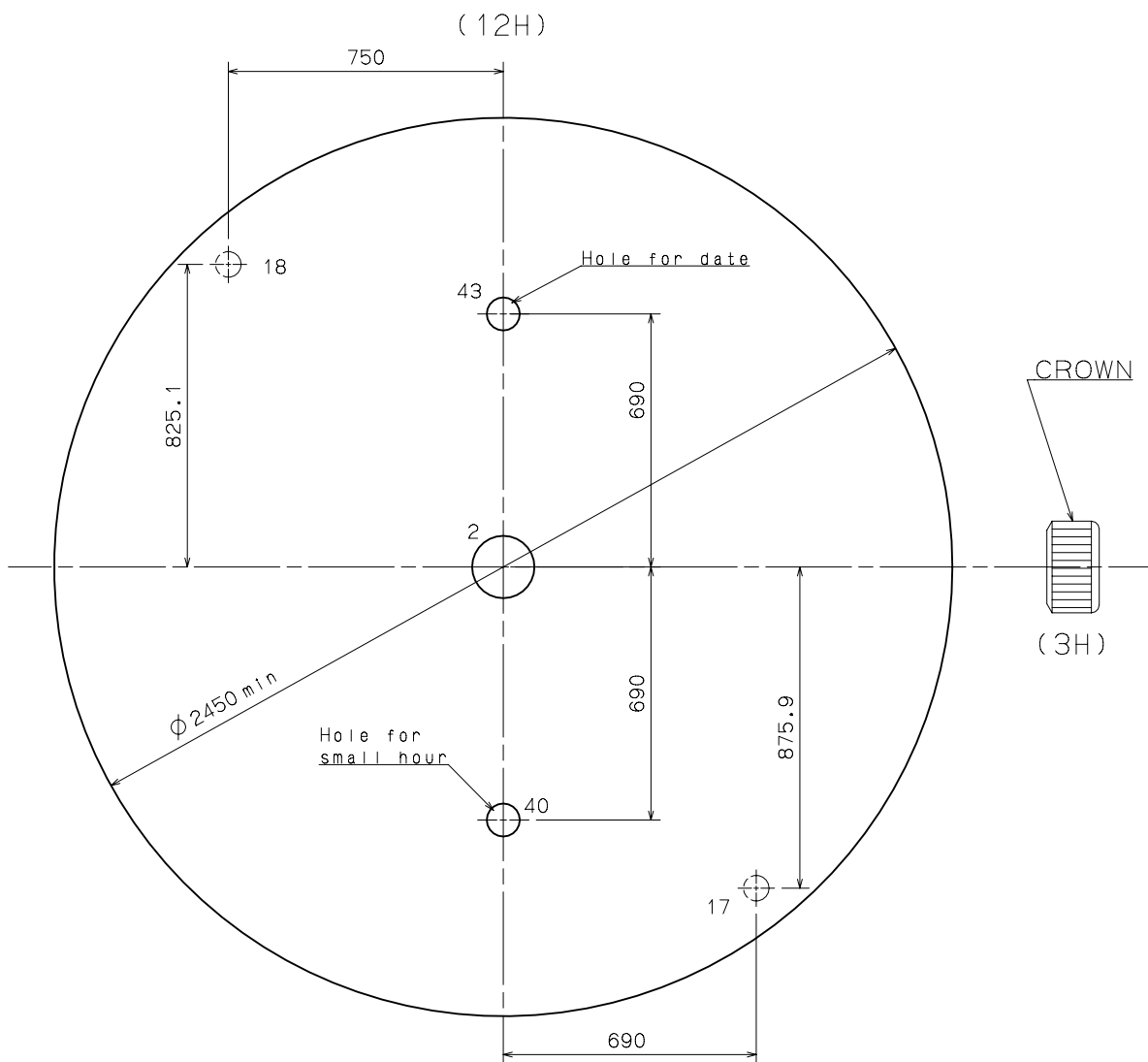
- \* Hour hand unbalance  $\leq 0.5 \mu\text{N}\cdot\text{m}$  (50mg·mm)
- \* Minute hand unbalance  $\leq 0.8 \mu\text{N}\cdot\text{m}$  (80mg·mm)
- \* Second hand unbalance  $\leq 0.3 \mu\text{N}\cdot\text{m}$  (30mg·mm)
- \* Small hour hand unbalance  $\leq 0.1 \mu\text{N}\cdot\text{m}$  (10mg·mm)
- \* Date hand unbalance  $\leq 0.1 \mu\text{N}\cdot\text{m}$  (10mg·mm)



	A	B	C	D	E	F	G
TYPE S 低針	82	118	161	36	40	50	MAX1250
TYPE M 一般針高	95	153	214	36	40	50	-
TYPE L 高針	105	163	224	46	85	50	-



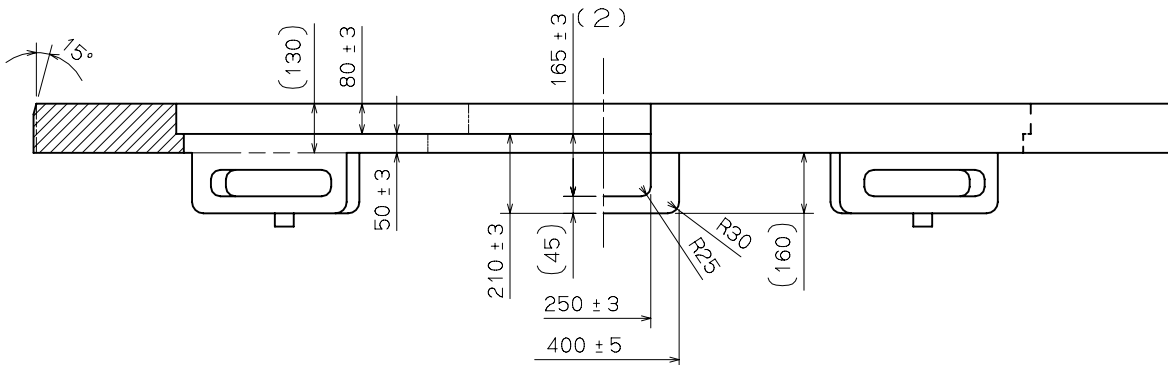
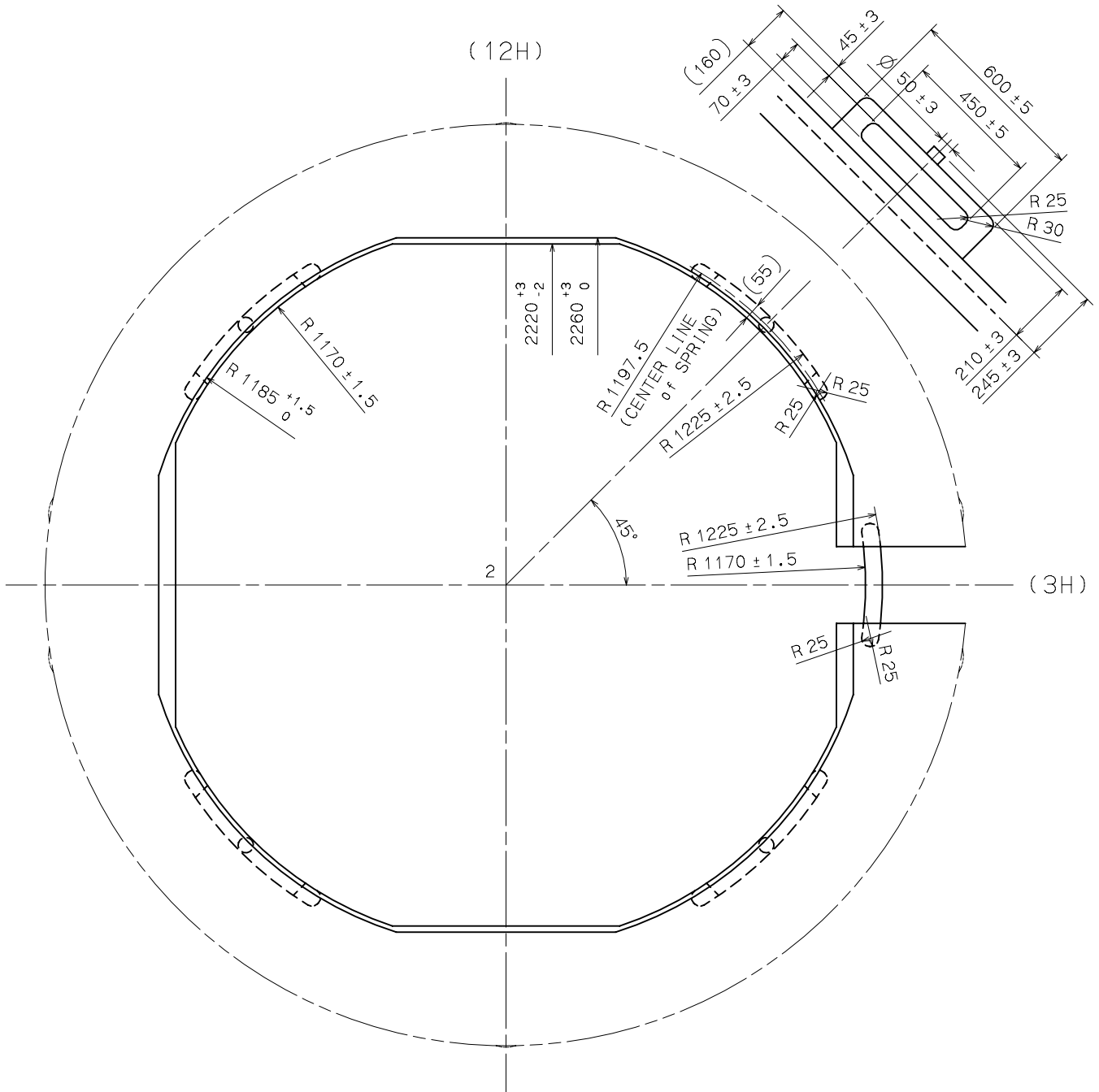
	Part No.	A	B
TYPE A	0351 177	1371	1969
TYPE B	0351 122	1947	2545



	TYPE S	TYPE M	TYPE L
A	40	40	85

# Casing Ring

VH61A



SECTIONAL VIEW of 12H DIRECTION

SIDE VIEW from 3H DIRECTION

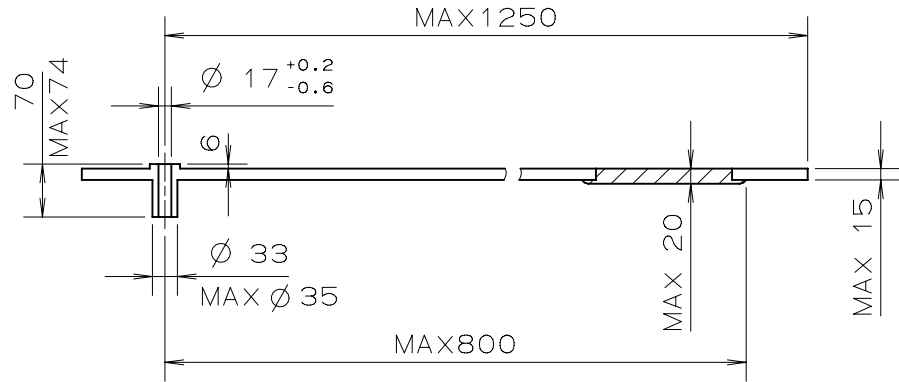
Unit : 1=1/100mm

Version : 1

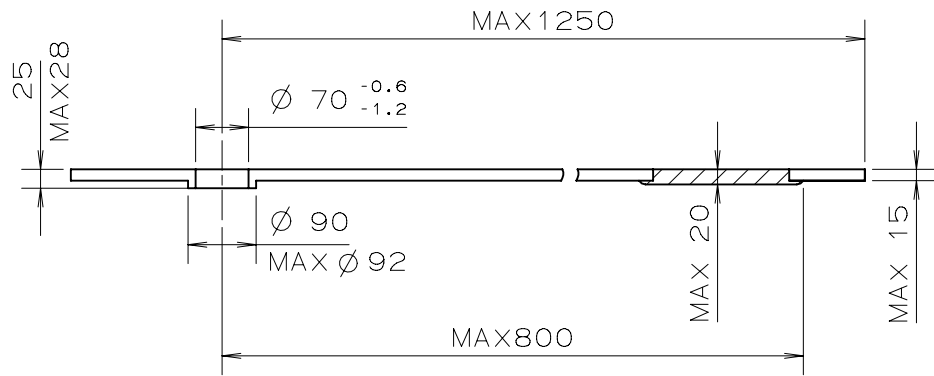




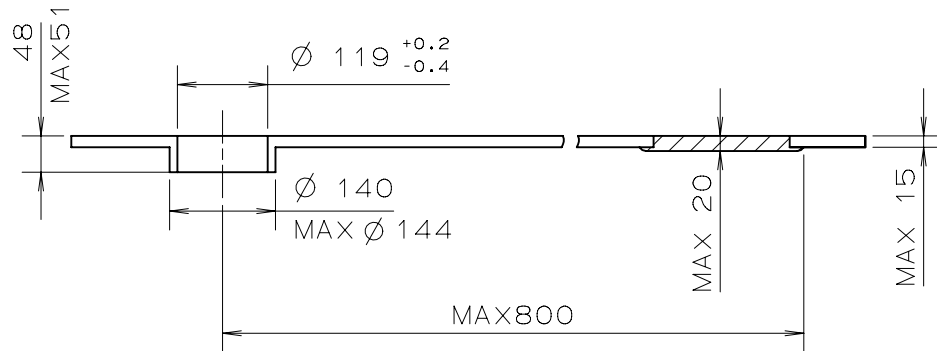
SECOND



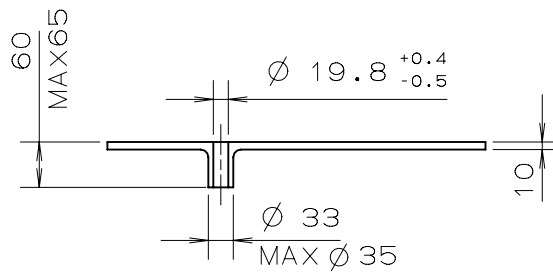
MINUTE



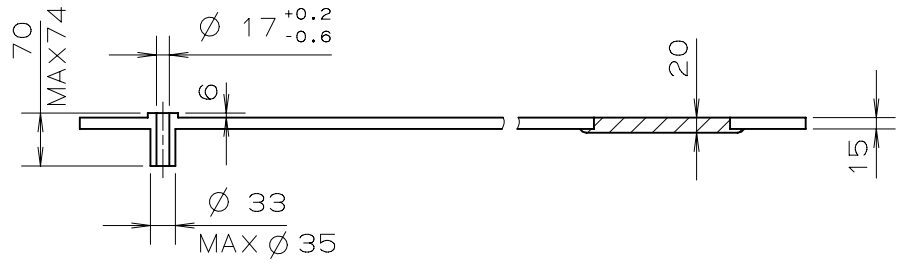
HOUR



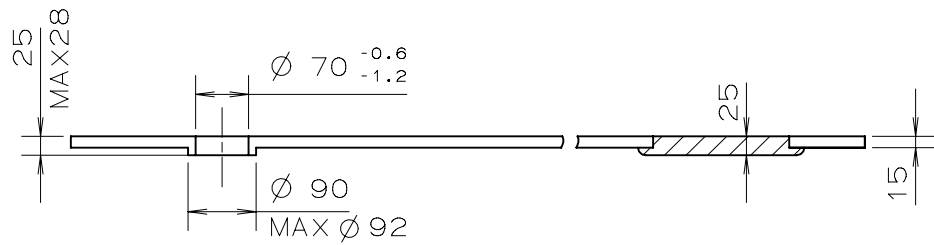
SMALL HOUR  
DATE



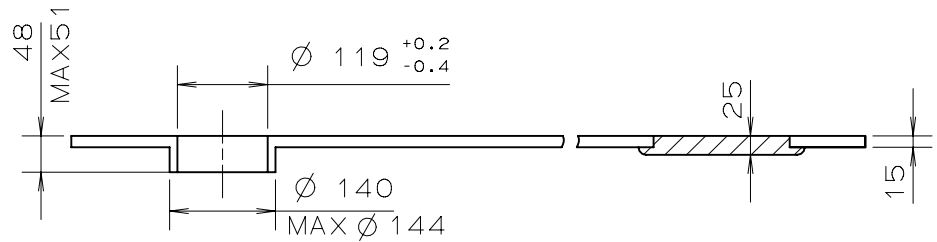
SECOND



MINUTE



HOUR



SMALL HOUR  
DATE

