

Watch Movement Specification and Drawing

2 Hands Multi-eye Movement

VD73A



Movement Size: **10 1/2"**
 Diameter: **Φ23.70mm**
 Height: **3.45mm**

Items	Ver.	Items	Ver.
Specification	1		
Appearance	1		
Casing	1		
Hand Fitting	1		
Hand Setting Stem	1		
Dial	1		
Casing Ring	1		
Assembly Plan	1		
Hands	1		

CAL.VD73A 10½ Ligne Quartz Movement

Two Hands with 2 Eyes Small Second & Date Hands

1. FUNCTION

- Jewel 0 jewel
- Accuracy Less than ± 20 seconds / month (Normal temperature range)
- Battery life Approx. 3 years
- Regulation hands unbalance
 - Hour hand : Less than $0.60 \mu\text{N}\cdot\text{m}$ (60 mg·mm)
 - Minute hand : Less than $0.60 \mu\text{N}\cdot\text{m}$ (60 mg·mm)
 - Small hands : Less than $0.05 \mu\text{N}\cdot\text{m}$ (5 mg·mm)
(Second & date hands)

- Additional function Date display with quick date correction

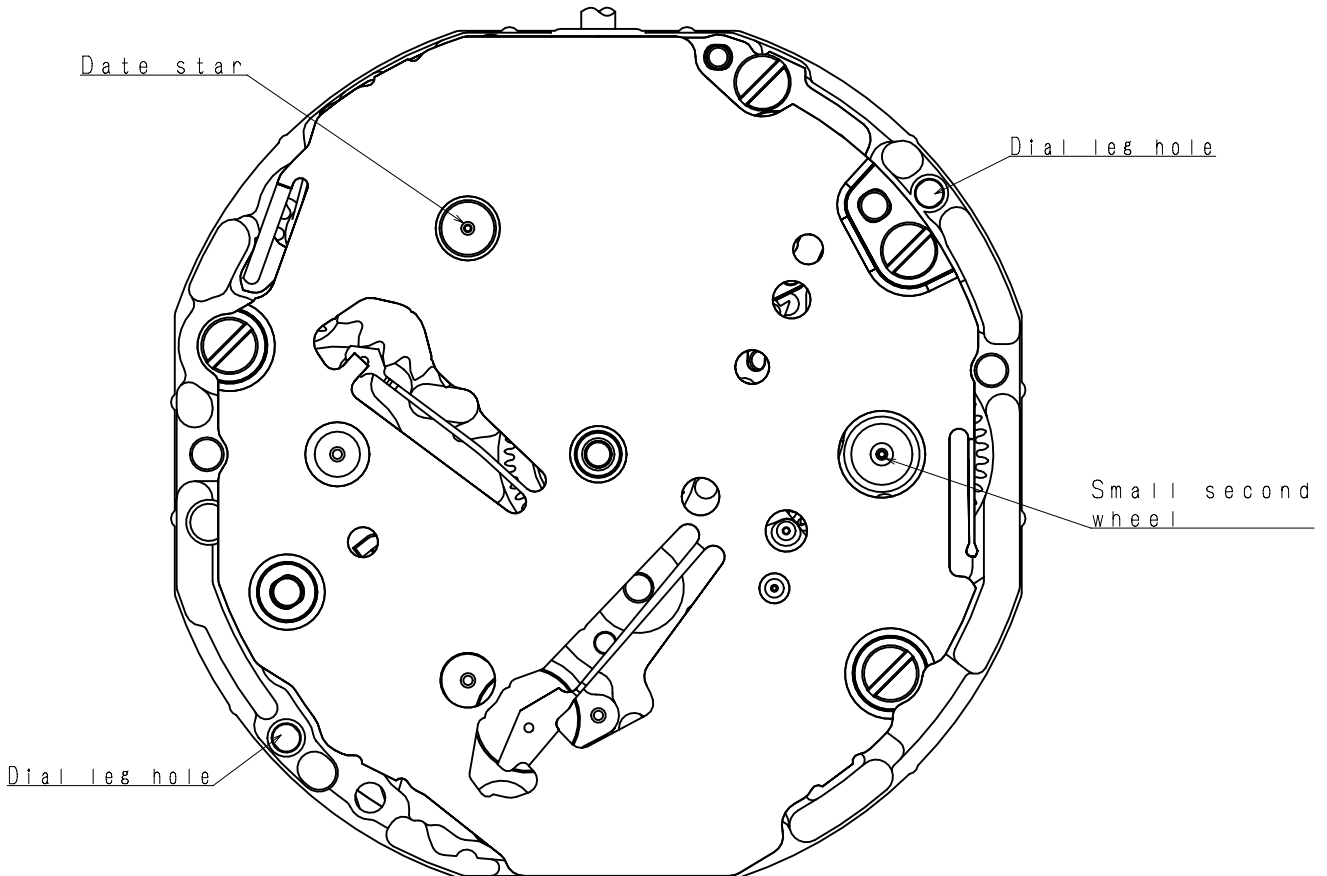
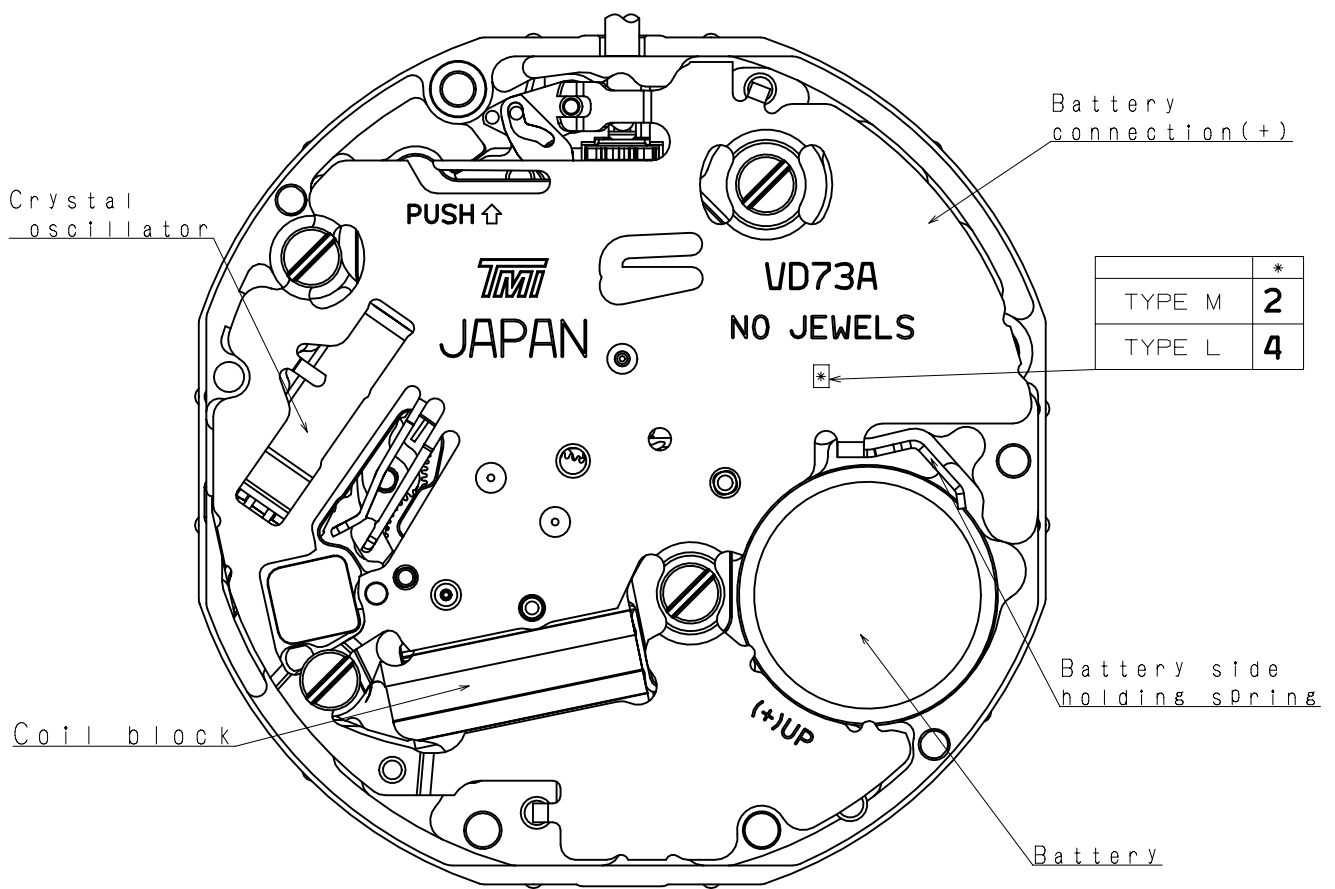
2. USE AND TEST CONDITION

- Battery SR626SW (Recommended battery is SEIZAIKEN)
- Operation temperature range From $- 5 \text{ }^{\circ}\text{C}$ to $+ 50 \text{ }^{\circ}\text{C}$
- Antimagnetic $\geq 1600 \text{ A / m}$ (Direct current magnetic field)
- Test of accuracy 10 seconds (Duration of measurement)

*** All specifications are subject to change without notice.**

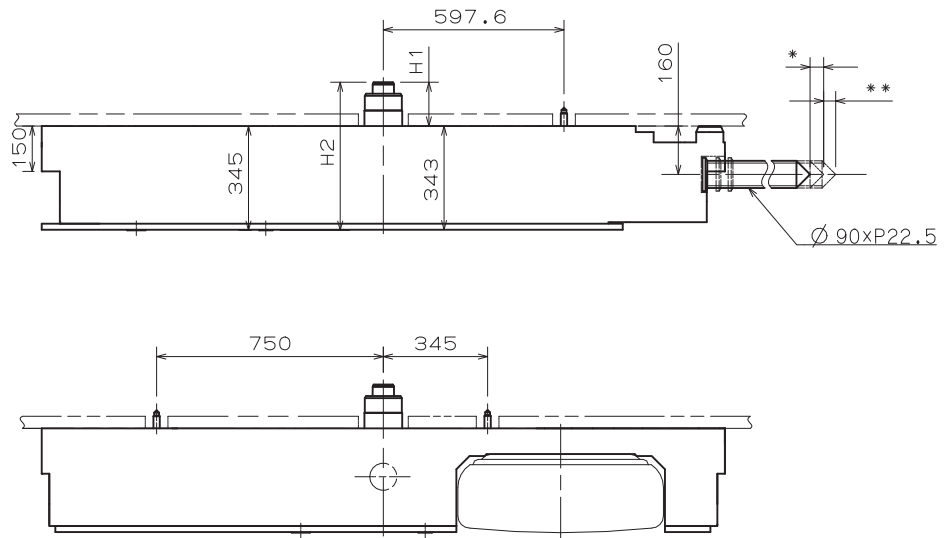
Appearance

VD73A



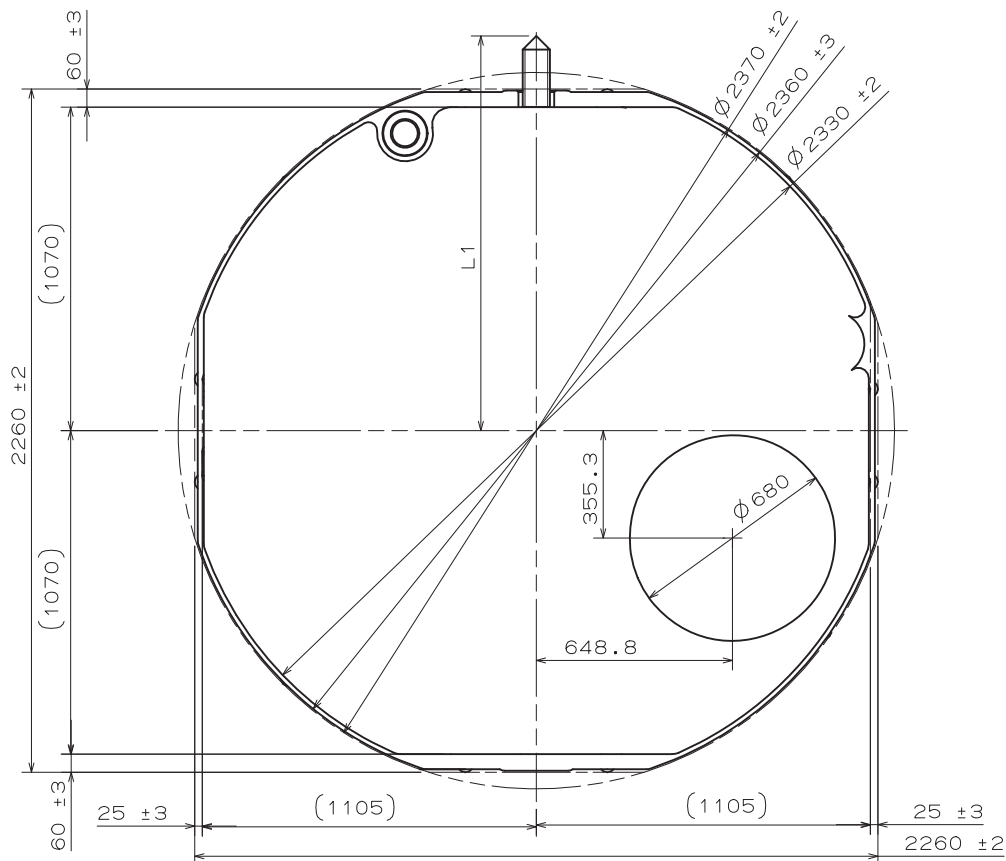
Version : 1

* First pull out stroke 45
 ** Second pull out stroke 39.9

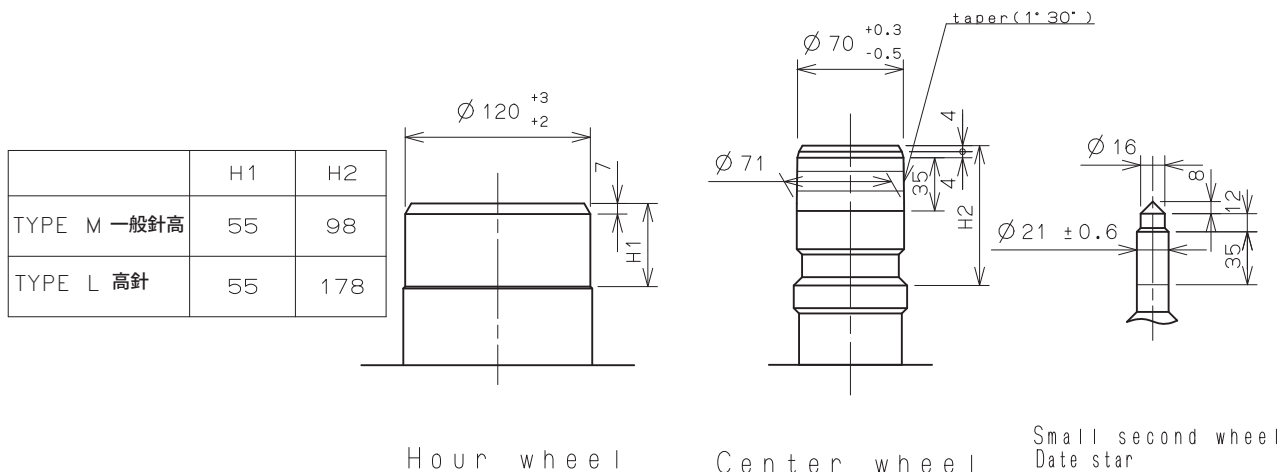


Center post	中心柱位	TYPE M 一般針高	TYPE L 高針
Maximum height from main plate surface 與機芯平面的最大高度	H1	150	230
Total height incl. movement 機芯總高度	H2	495	575

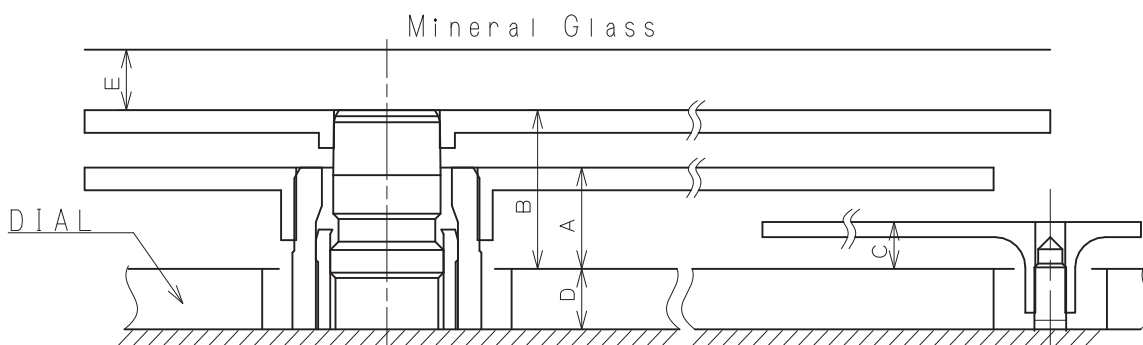
Hand Setting Stem	TYPE A	TYPE B
L1	2436	3012



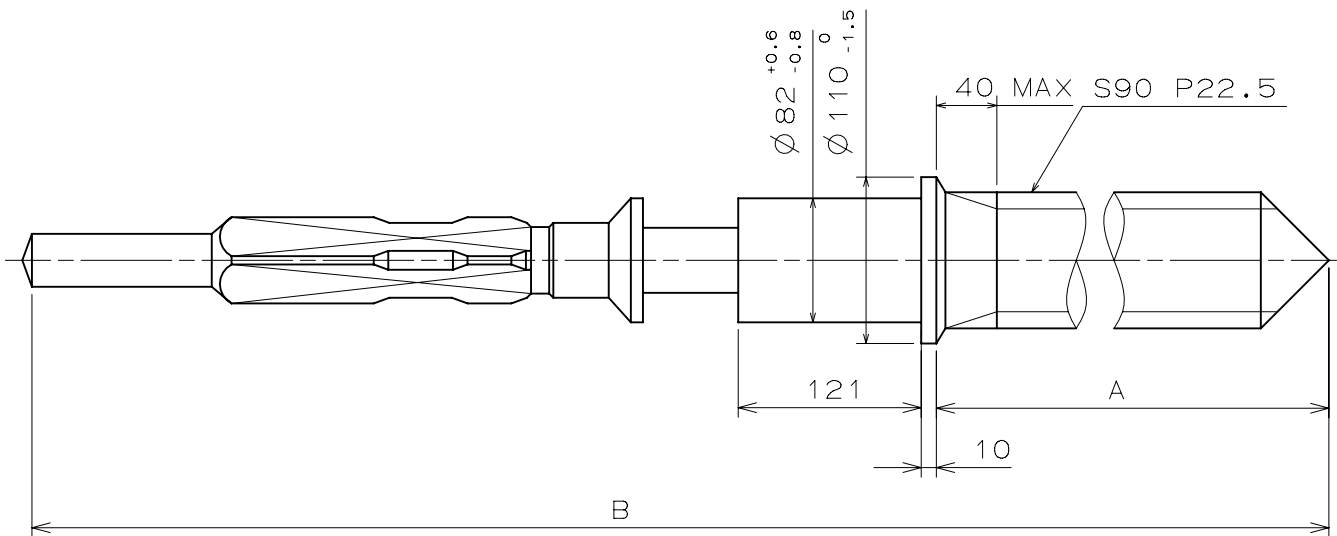
- * Hour hand unbalance $\leq 0.6 \mu\text{N}\cdot\text{m} (60\text{mg}\cdot\text{mm})$
- * Minute hand unbalance $\leq 0.6 \mu\text{N}\cdot\text{m} (60\text{mg}\cdot\text{mm})$
- * Small second hand unbalance $\leq 0.05 \mu\text{N}\cdot\text{m} (5\text{mg}\cdot\text{mm})$
- * Date hand unbalance $\leq 0.05 \mu\text{N}\cdot\text{m} (5\text{mg}\cdot\text{mm})$



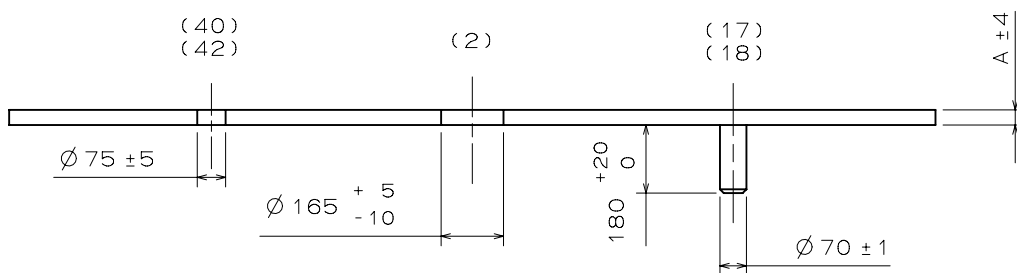
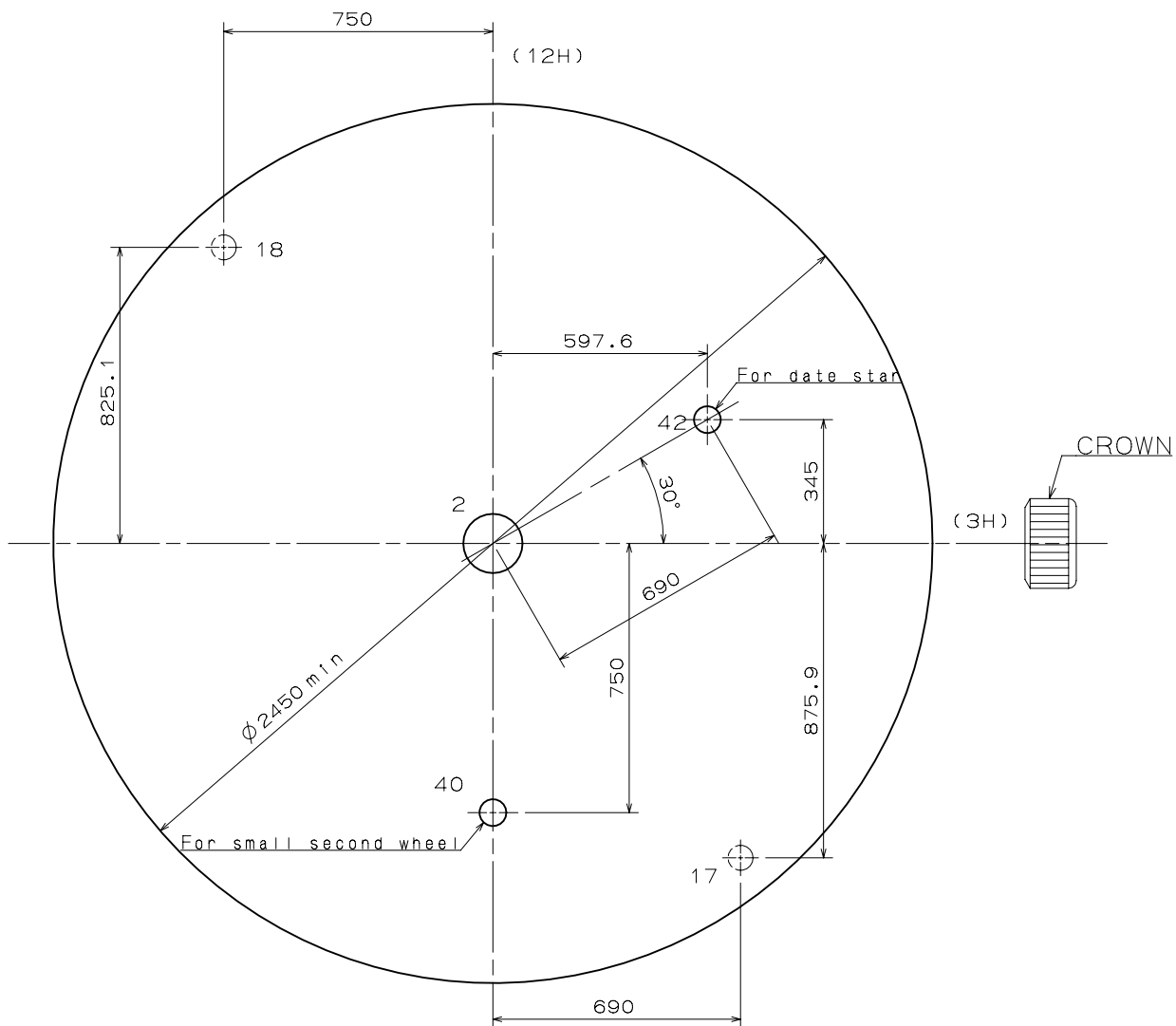
Part name	Part No.	
	TYPE M 一般針高	TYPE L 高針
Hour wheel 時針輪	0273 169	0273 035
Center wheel 分針輪	0221 069	0221 076
Small second wheel 小秒針輪	0240 169	0240 015
Date star 日曆針輪	0970 169	0970 037



	A	B	C	D	E
TYPE M 一般針高	72	110	31	40	35
TYPE L 高針	95	145	41	85	40



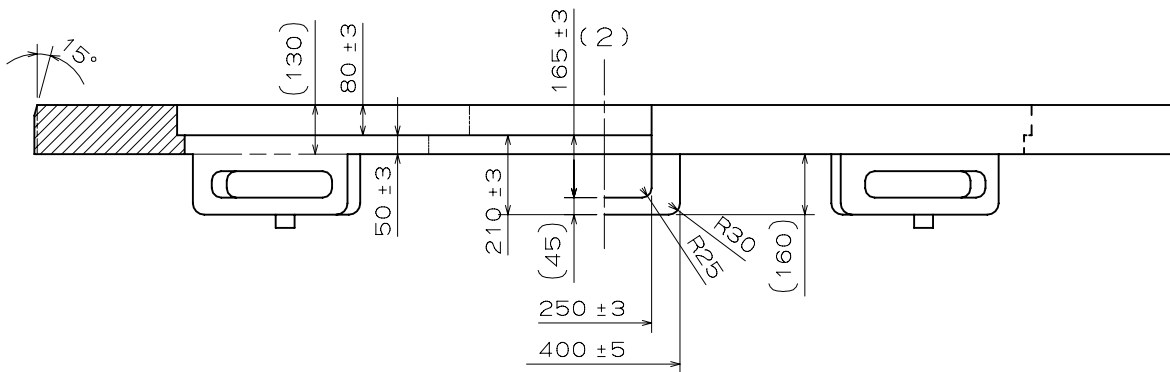
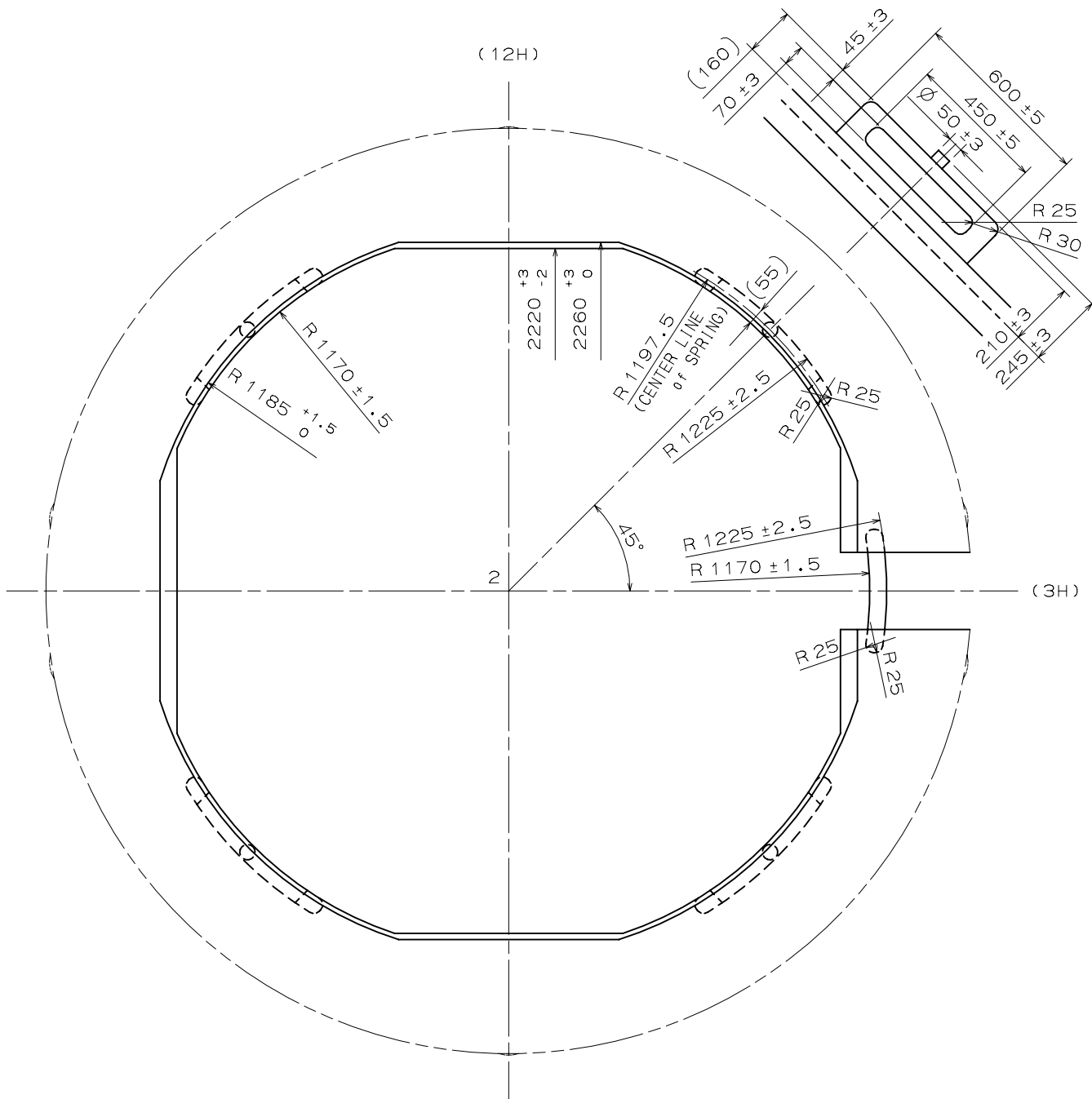
	Part No.	A	B
TYPE A	0351 177	1371	1969
TYPE B	0351 122	1947	2545



	TYPE M	TYPE L
A	40	85

Casing Ring

VD73A

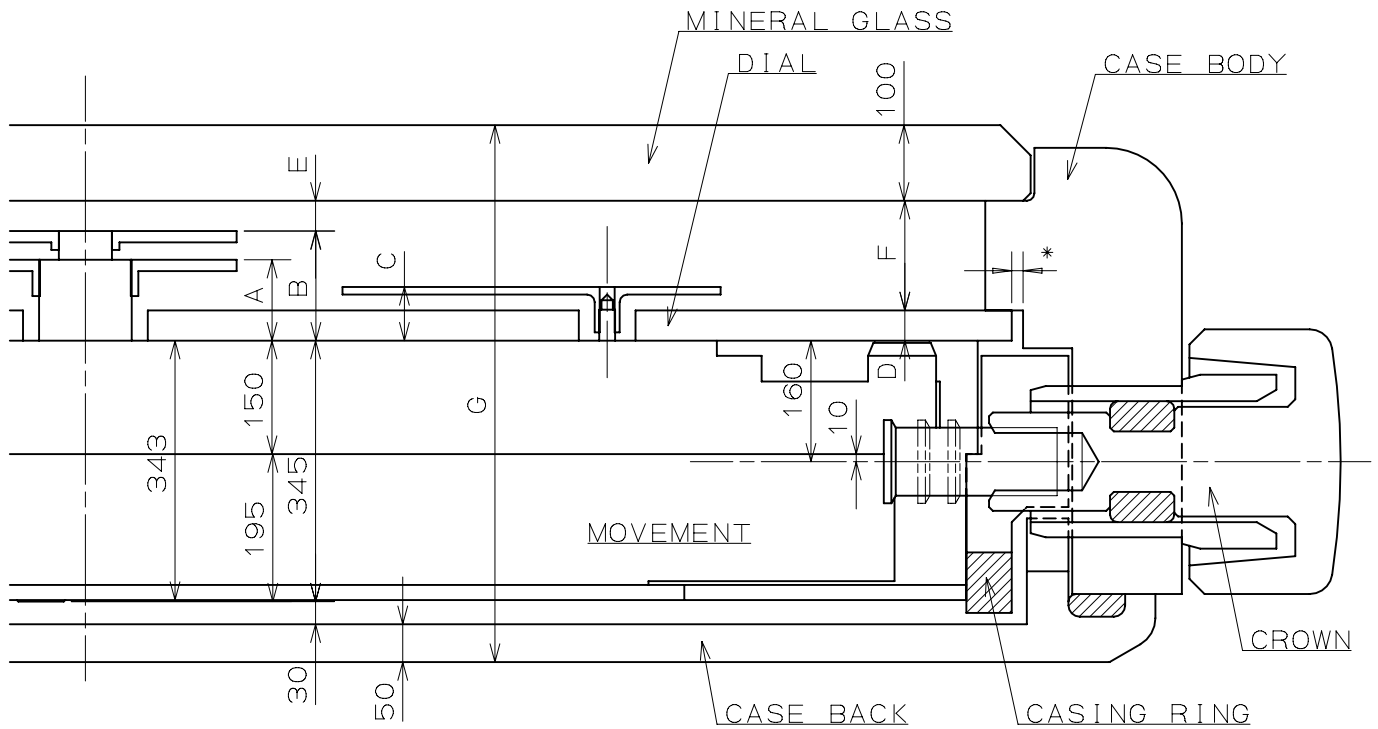


SECTIONAL VIEW of 12H DIRECTION

SIDE VIEW from 3H DIRECTION

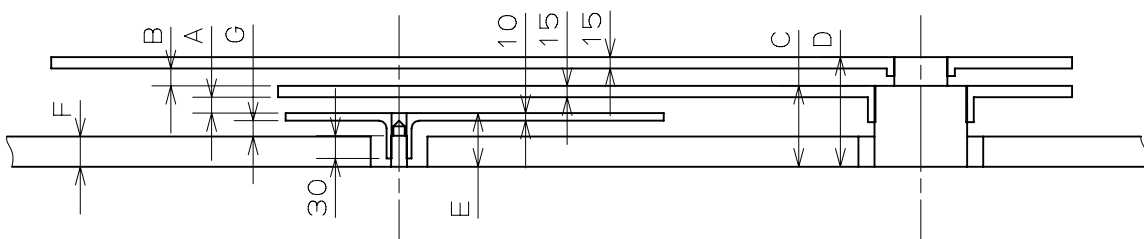
Unit : 1=1/100mm

Version : 1



	A	B	C	D	E	F	G
TYPE M	112	150	71	40	35	145	710
TYPE L	180	230	126	85	40	185	795

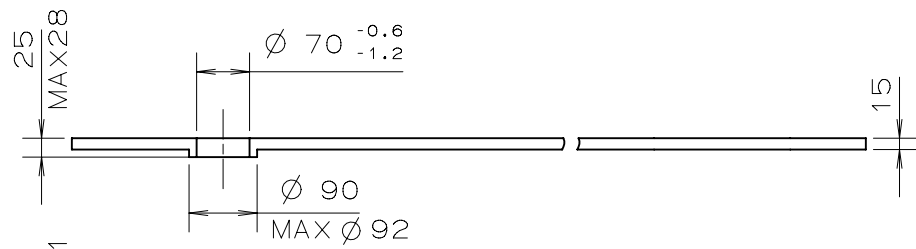
*Recommended Dimension(Clearance of DIAL and CASE BODY):15



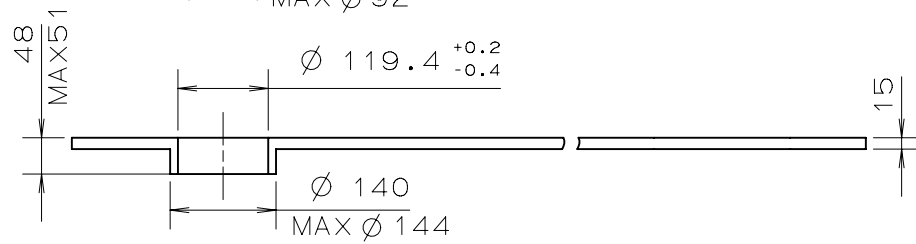
	A	B	C	D	E	F	G
TYPE M	26	23	112	150	71	40	21
TYPE L	39	35	180	230	126	85	31

TYPE M

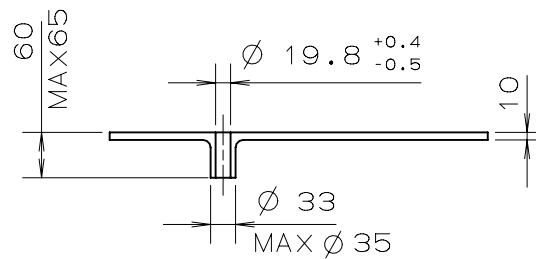
MINUTE



HOUR

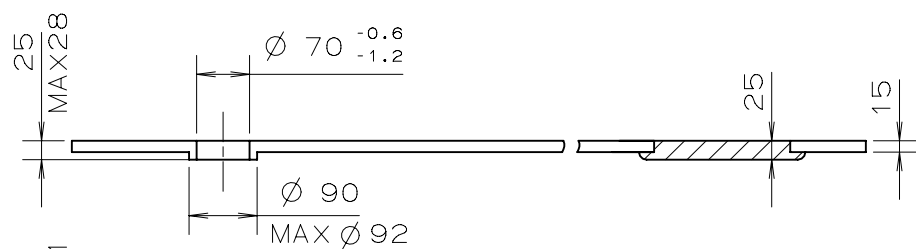


SMALL SECOND
DATE

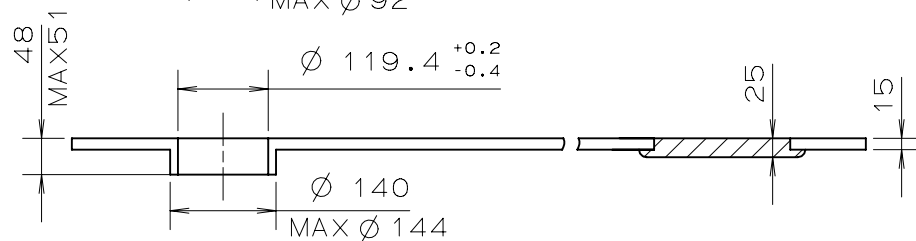


TYPE L

MINUTE



HOUR



SMALL SECOND
DATE

