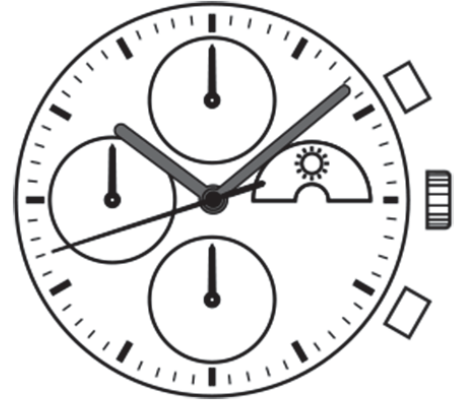


Watch Movement Specification and Drawing

Basic Chronograph Movement

VD59C



Movement Size: **12 3/4"**
 Diameter: **Φ29.50mm**
 Height: **4.57mm**

Items	Ver.	Items	Ver.
Specification	1		
Appearance	1		
Casing	1		
Hand Fitting	1		
Hand Setting Stem	1		
Dial	1		
Assembly Plan - 1	1		
Assembly Plan - 2	1		
Hands	1		

CAL.VD59C 12 $\frac{3}{4}$ Ligne Quartz Movement**Three Hands with 3 Eyes, Sun and Moon Disc****Small Chronograph 1 / 10 Second, Small Chronograph Second & Minute Hands****1. FUNCTION**

- Jewel 0 jewel
- Accuracy Less than ± 20 seconds / month (Normal temperature range)
- Battery life Approx. 3 years
- Regulation hands unbalance
 - Hour hand : Less than $0.60 \mu\text{N}\cdot\text{m}$ (60 mg·mm)
 - Minute hand : Less than $0.90 \mu\text{N}\cdot\text{m}$ (90 mg·mm)
 - Second hand : Less than $0.09 \mu\text{N}\cdot\text{m}$ (9 mg·mm)
 - Small chronograph hands : Less than $0.05 \mu\text{N}\cdot\text{m}$ (5 mg·mm)
- Additional function
 - Chronograph : up to 1 minute in 1/10 second (2 seconds per round)
: up to 60 minutes in 1 second split time
 - Sun & Moon disc (Synchronized regular hour hand)

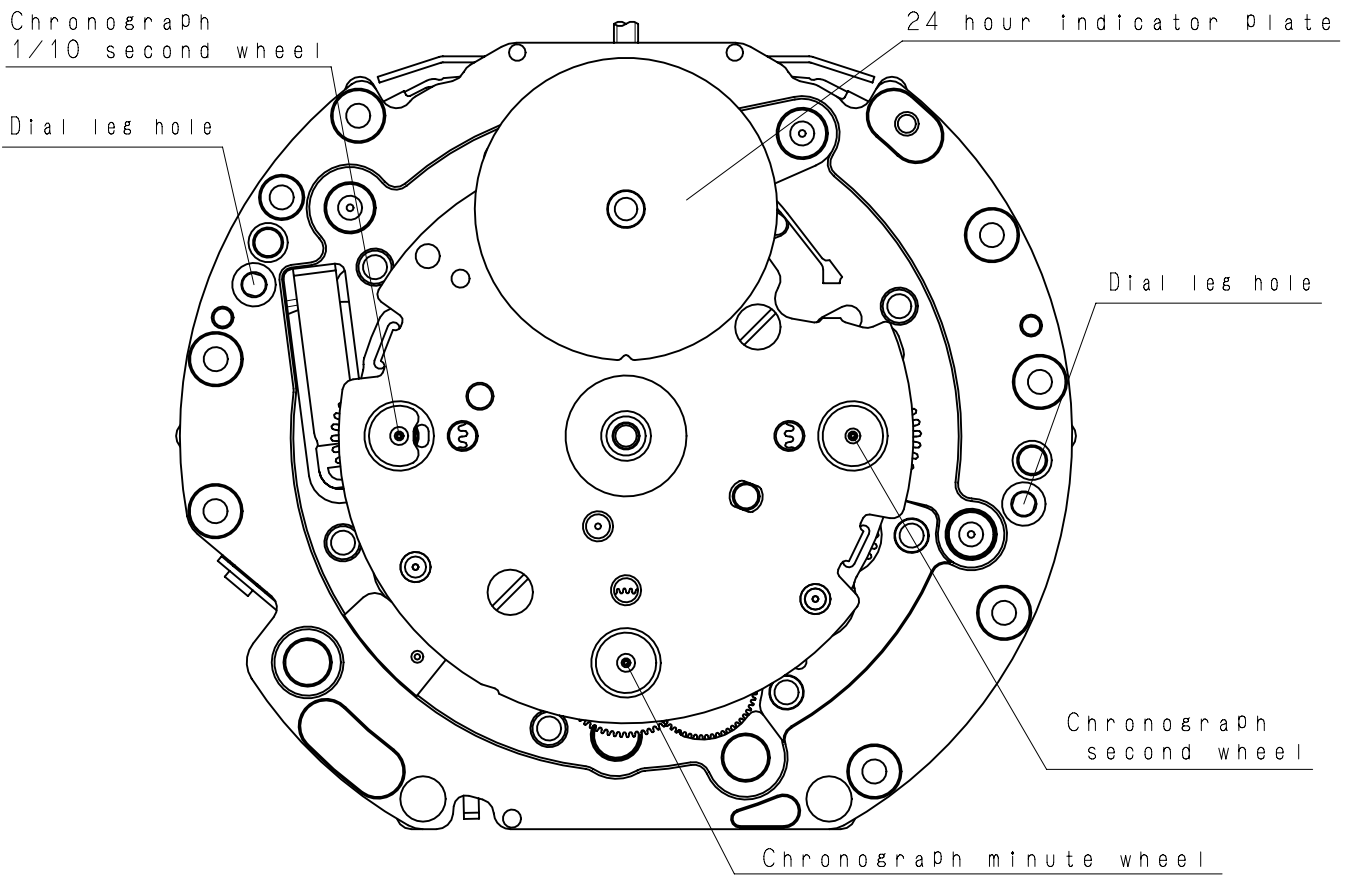
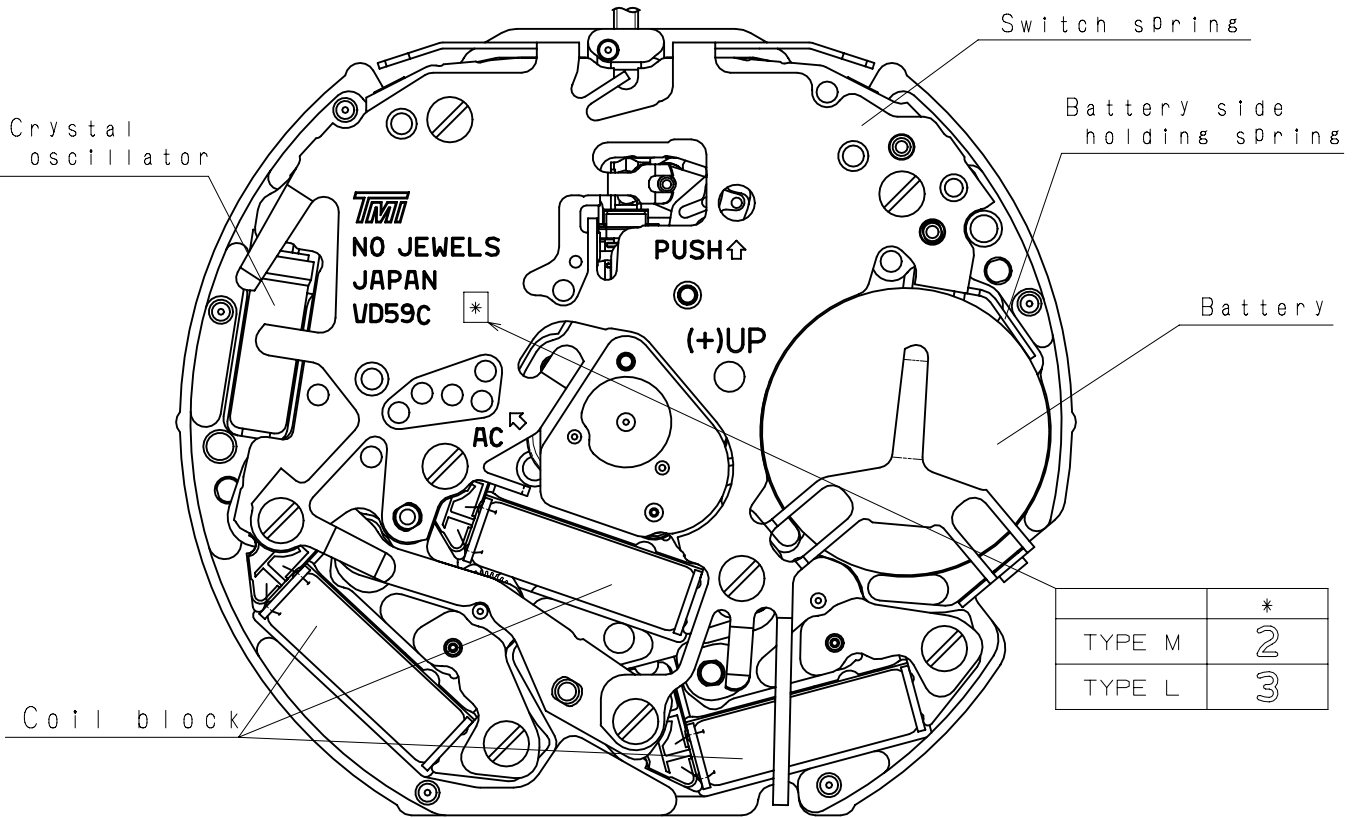
2. USE AND TEST CONDITION

- Battery SR920SW (Recommended battery is SEIZAIKEN)
- Operation temperature range From - 5 °C to + 50 °C
- Antimagnetic $\geq 1600 \text{ A / m}$ (Direct current magnetic field)
- Test of accuracy 10 seconds (Duration of measurement)

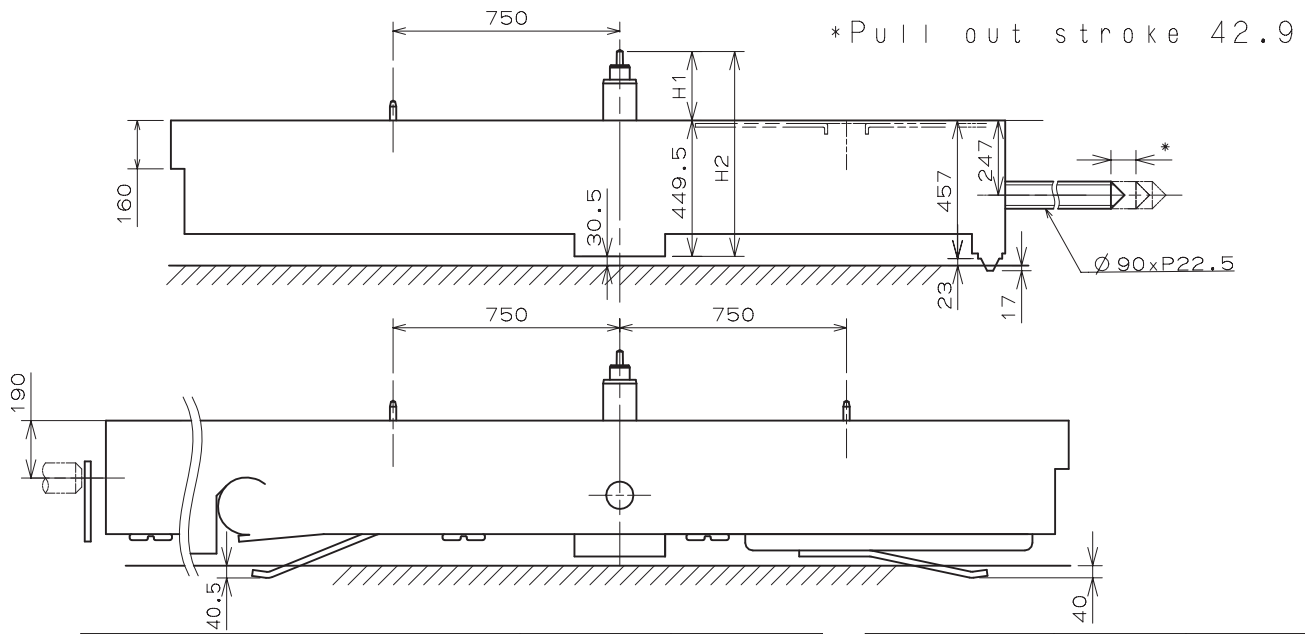
*** All specifications are subject to change without notice.**

Appearance

VD59C

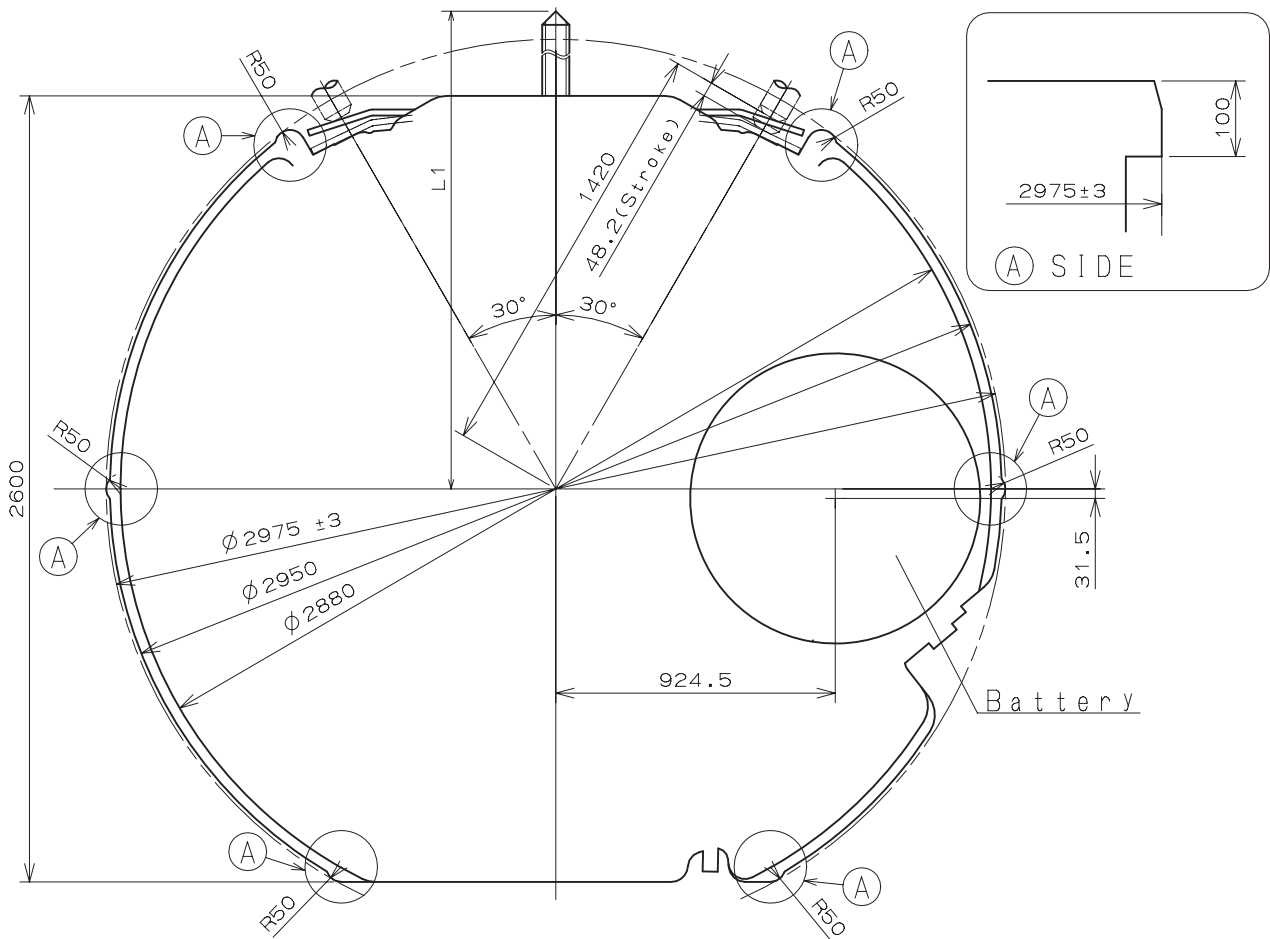


Version : 1

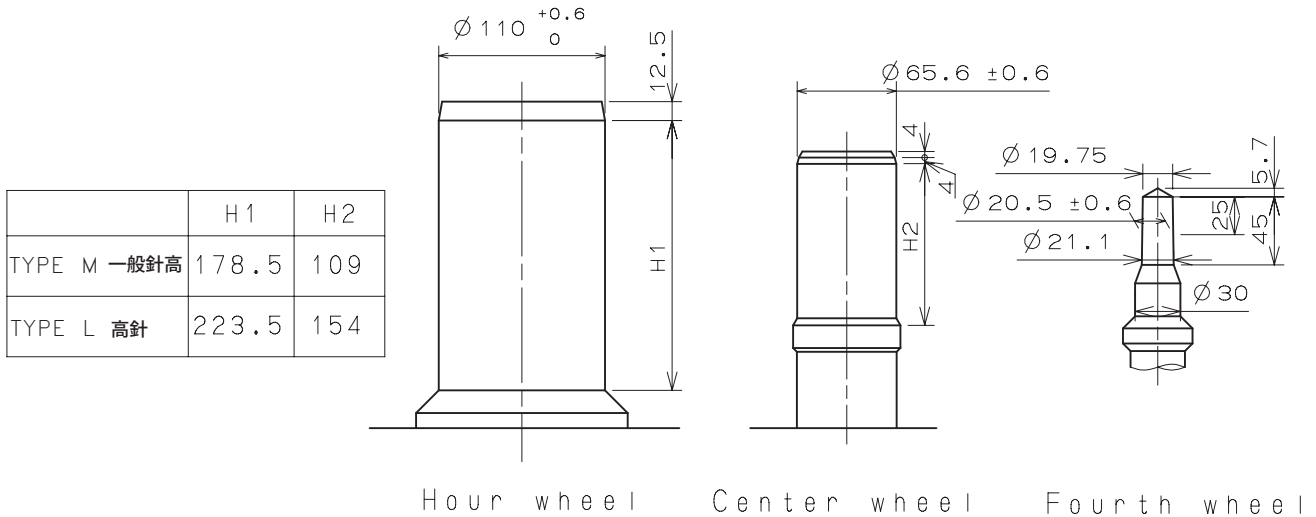


Center post 中心柱位		TYPE M 一般針高	TYPE L 高針
Maximum height from main plate surface 與機芯平面的最大高度	H1	228	273
Total height incl. movement 機芯總高度	H2	677.5	722.5

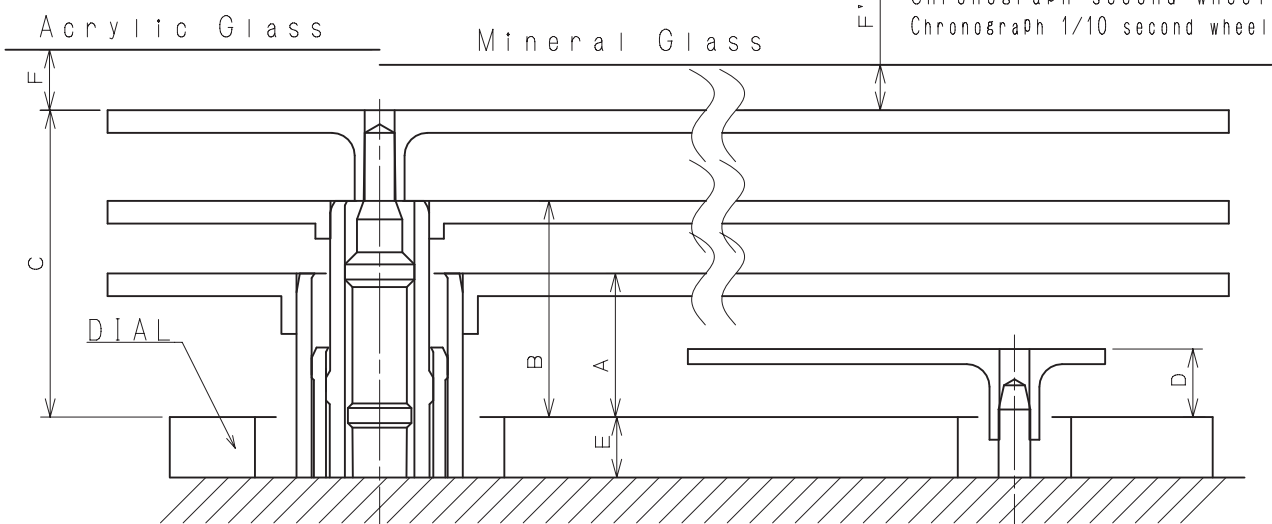
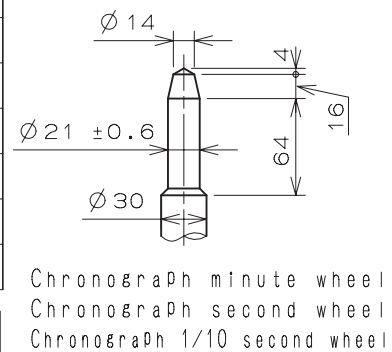
Hand Setting Stem	TYPE A	TYPE B
L1	2285	2861



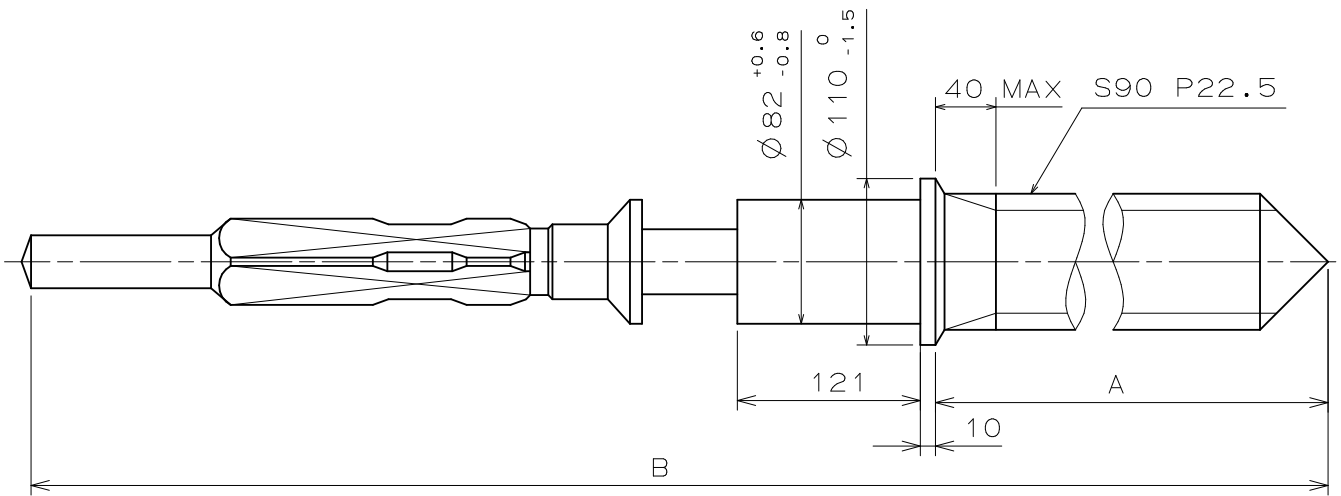
- * Hour hand unbalance $\leq 0.6 \mu\text{N}\cdot\text{m}$ (60mg·mm)
- * Minute hand unbalance $\leq 0.9 \mu\text{N}\cdot\text{m}$ (90mg·mm)
- * Second hand unbalance $\leq 0.09 \mu\text{N}\cdot\text{m}$ (9mg·mm)
- * Chronograph hand unbalance $\leq 0.05 \mu\text{N}\cdot\text{m}$ (5mg·mm)



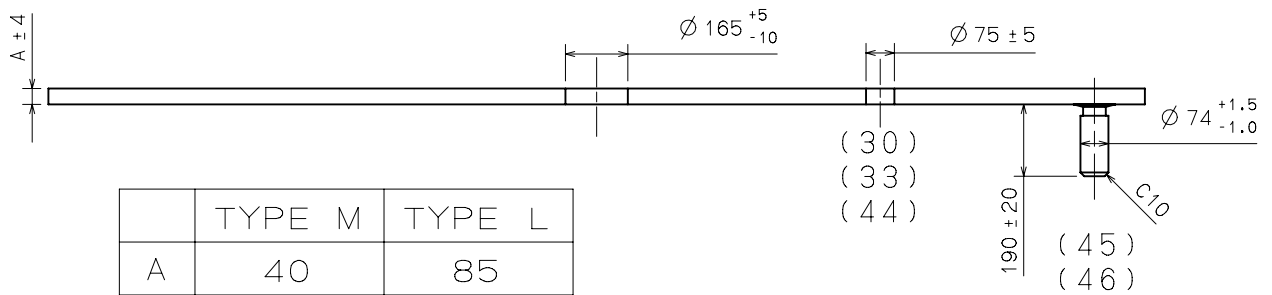
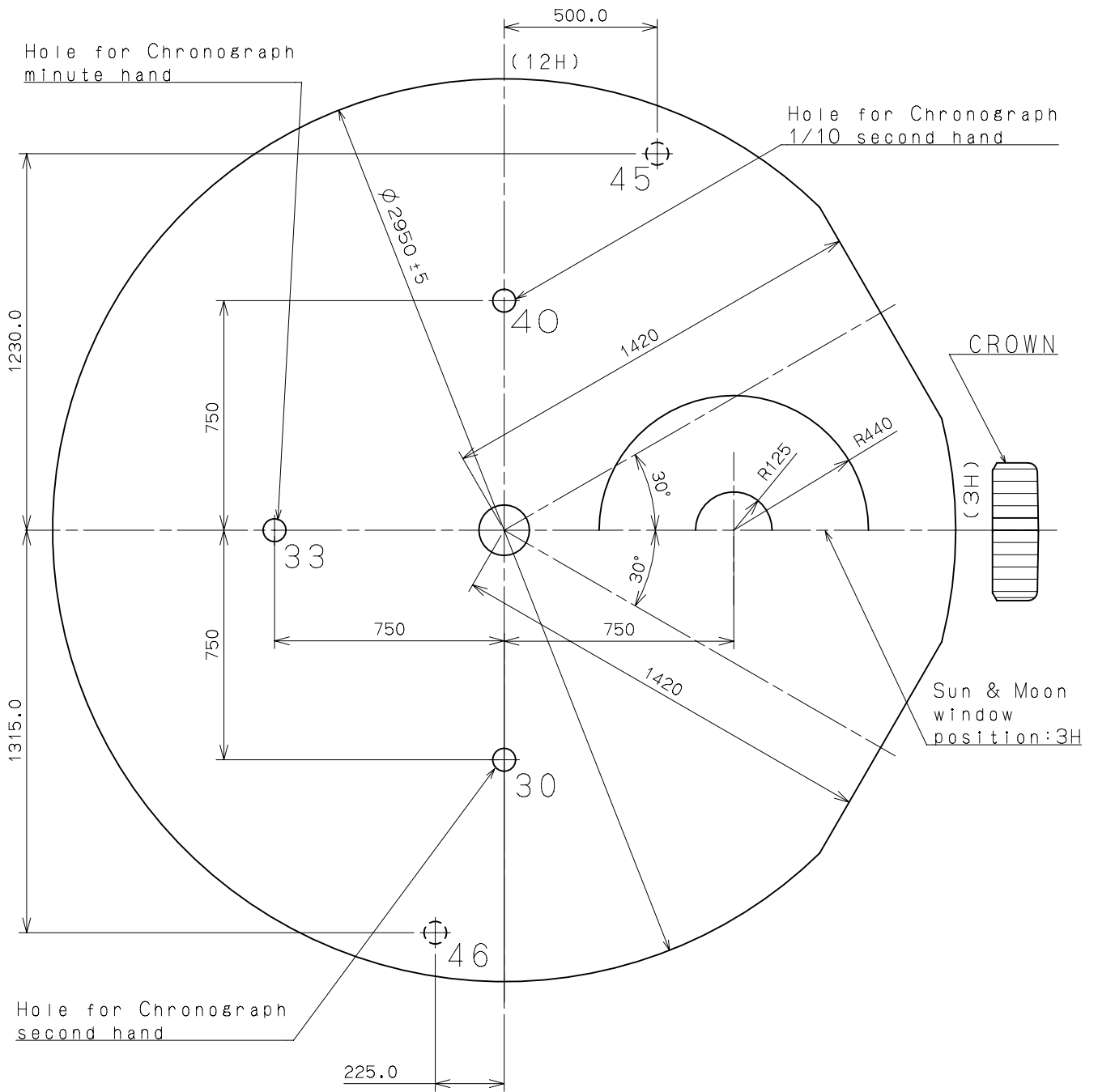
Part name		Part No.	
		TYPE M 一般針高	TYPE L 高針
Hour wheel	時針輪	0271 407	0273 037
Center wheel	分針輪	0221 203	0221 202
Fourth wheel	秒針輪	0241 178	0241 489
Chronograph minute wheel	計時分針輪	0902 008	0902 004
Chronograph second wheel	計時秒針輪	0888 009	0888 011
Chronograph 1/10 second wheel	1/10計時秒針輪	0888 009	0888 011



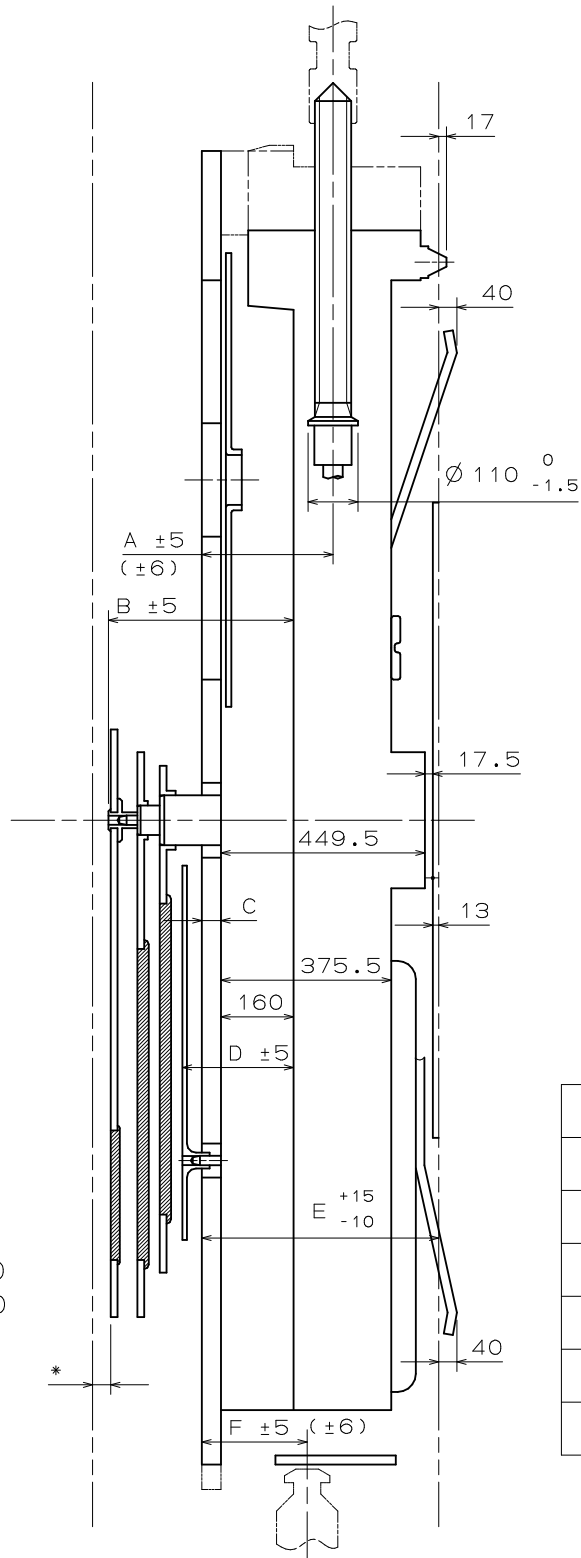
	A	B	C	D	E	F	F'
TYPE M 一般針高	95	143	203	45	40	50	40
TYPE L 高針	95	143	203	45	85	50	40



	Part No.	A	B
TYPE A	0351 177	1371	1969
TYPE B	0351 122	1947	2545

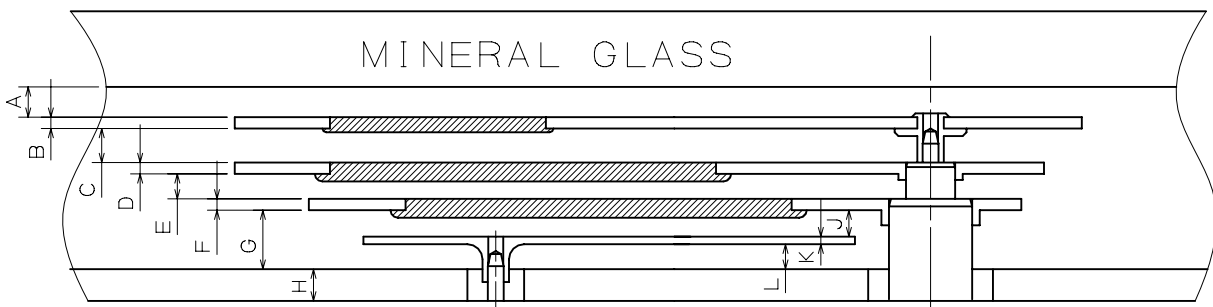
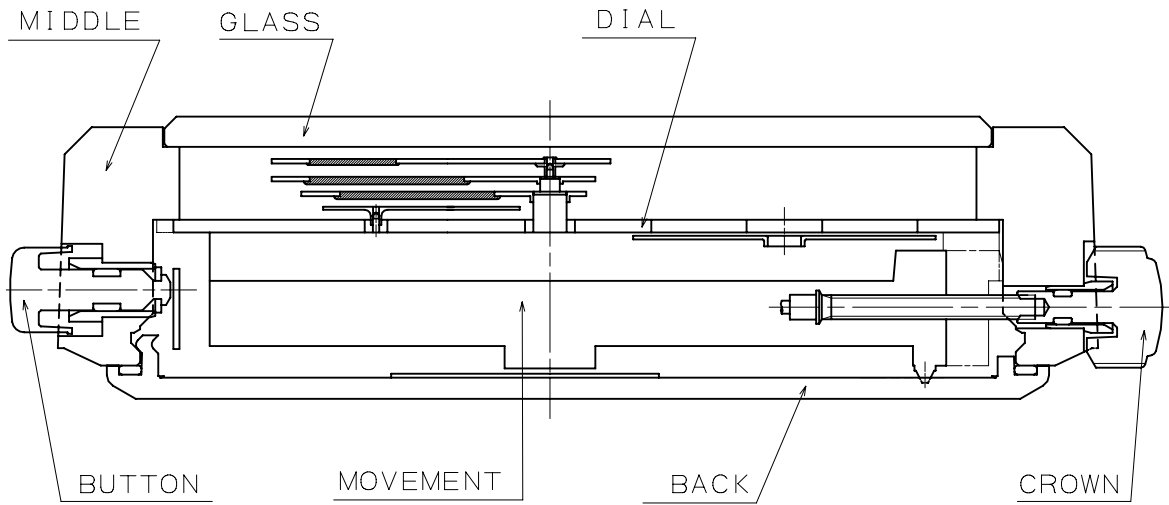


	TYPE M	TYPE L
A	40	85



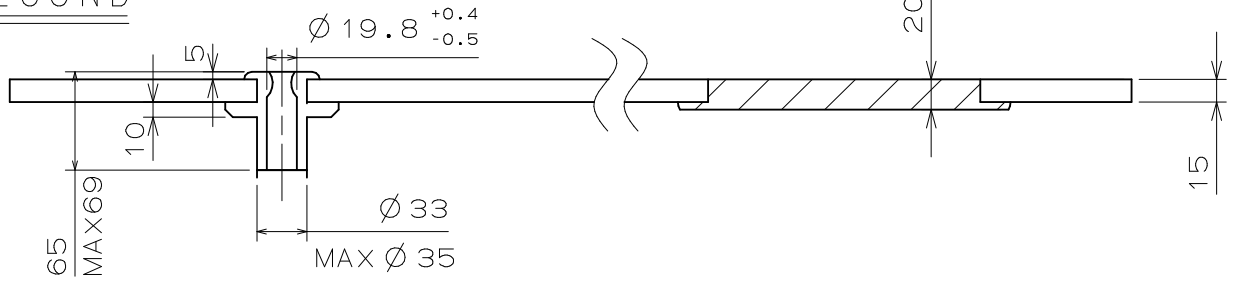
	TYPE M	TYPE L
A	287	332
B	403	448
C	40	85
D	245	290
E	520	565
F	230	275

* Acrylic Glass 50
 * Mineral Glass 40

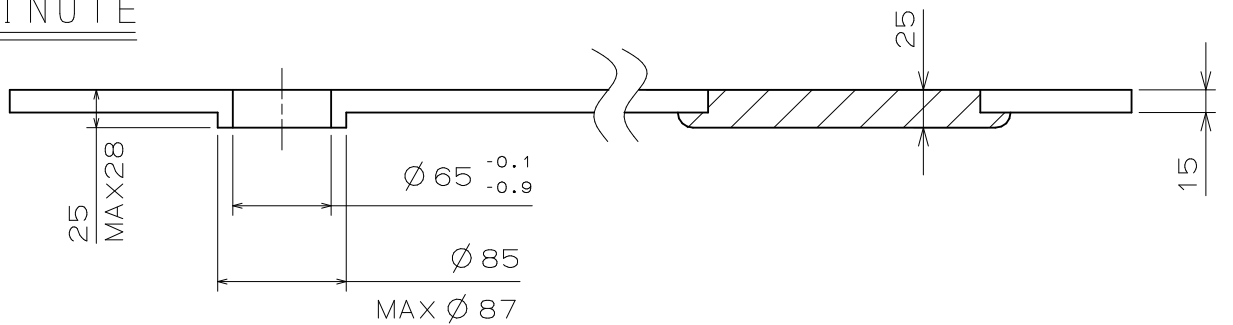


	TYPE M	TYPE L
A	40	40
B	15	15
C	45	45
D	15	15
E	33	33
F	15	15
G	80	80
H	40	85
J	35	35
K	10	10
L	35	35

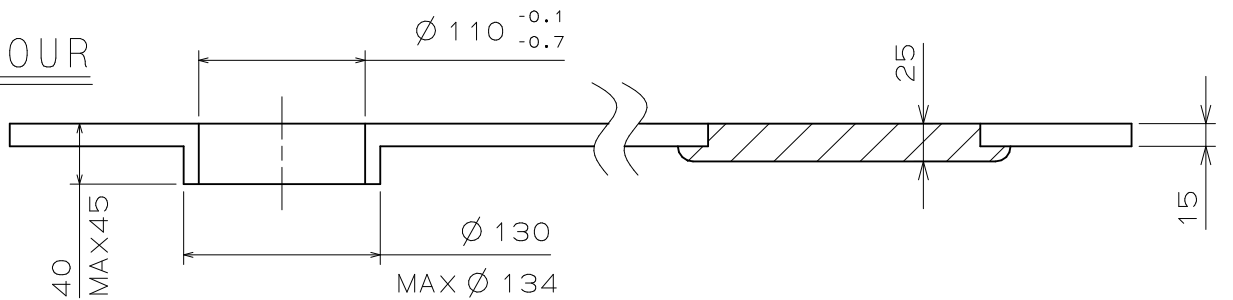
SECOND



MINUTE



HOUR



CHRONO

