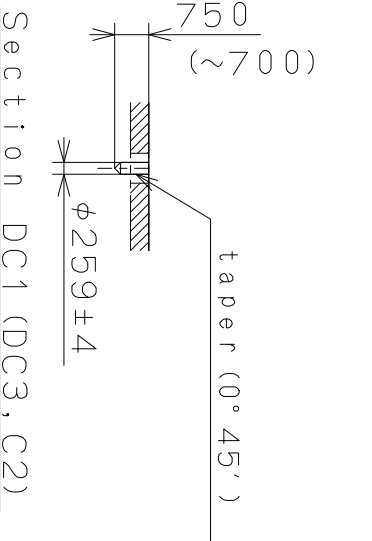
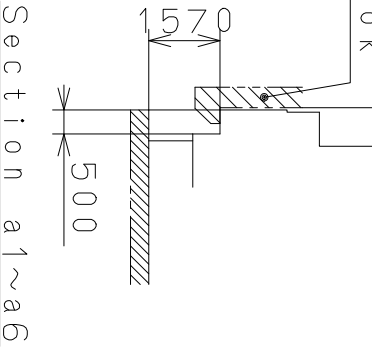
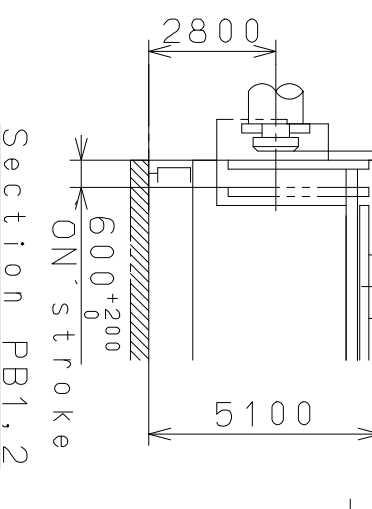
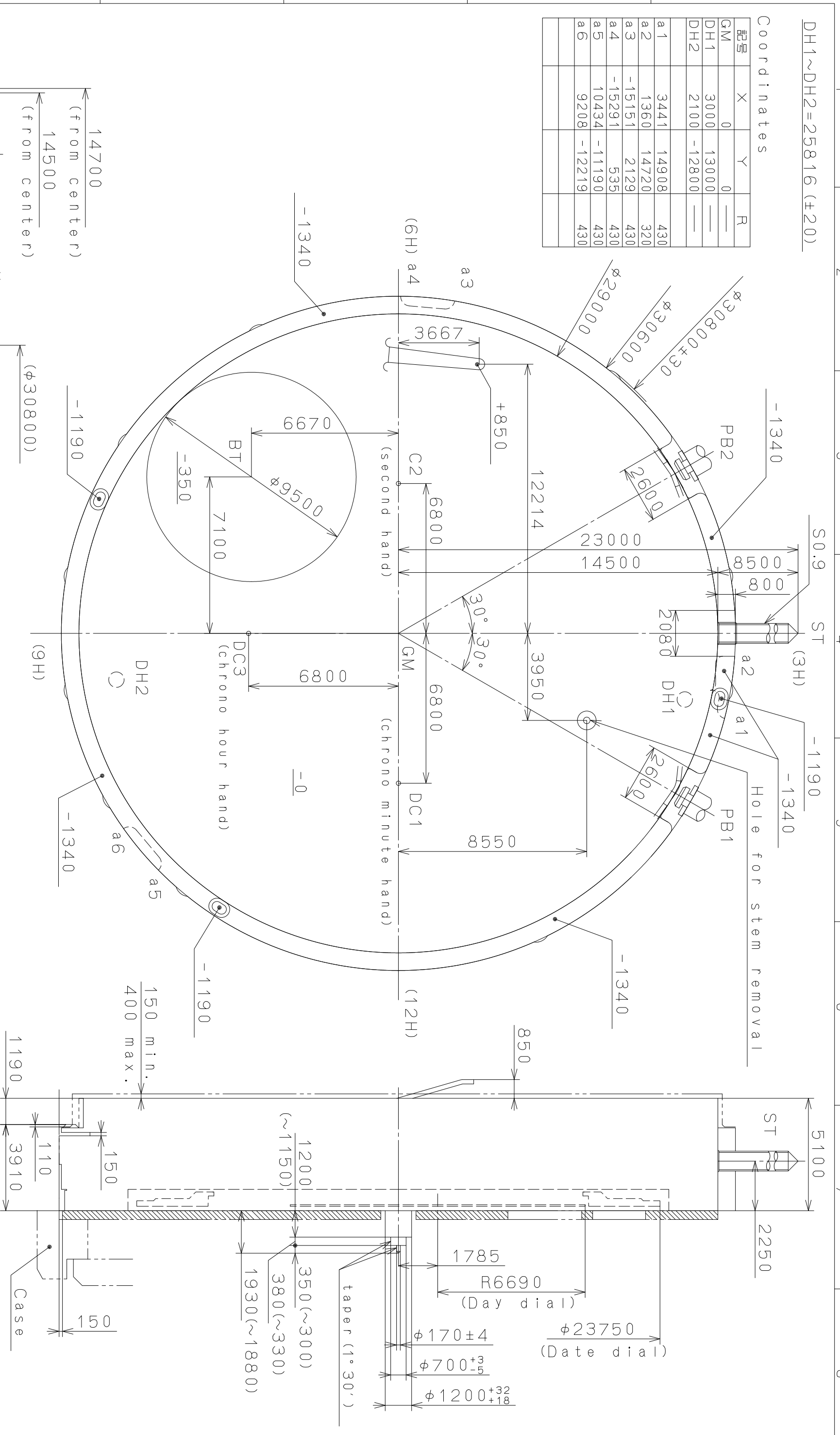


DH1~DH2=25816 (±20)

Coordinates			
記号	X	Y	R
GM	0	0	—
DH1	3000	13000	—
DH2	2100	-12800	—
a1	3441	14908	430
a2	1360	14720	320
a3	-15151	2129	430
a4	-15291	535	430
a5	10434	-11190	430
a6	9208	-12219	430

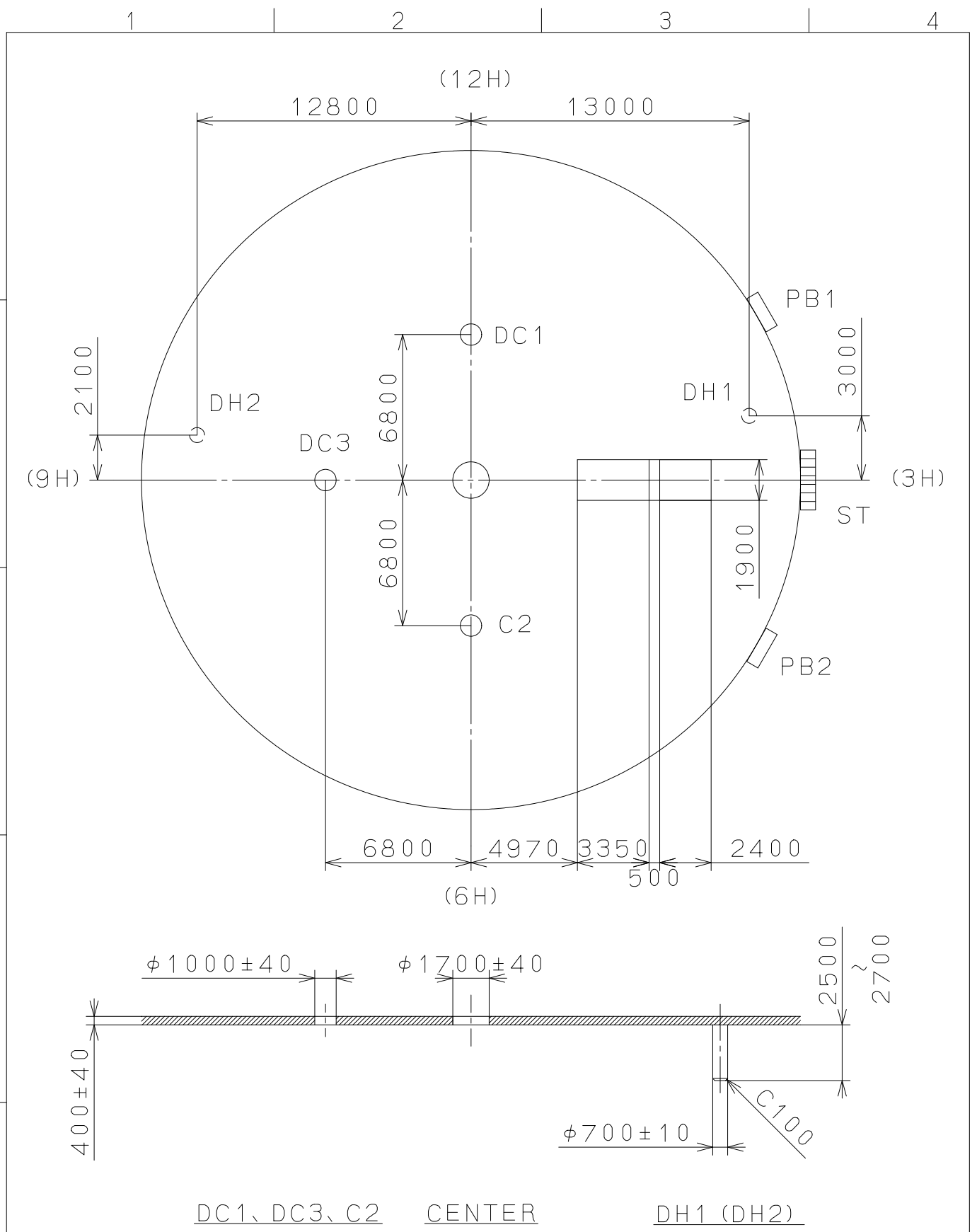


Quantity	Unit	1/1000 mm	Cal. NO.:	OS00
Scale	6:1		Parts No.:	
Date	Drawn		Name:	Frame for Case
Date	Checked		Name:	N. Suzuki
Date	Approved			
Alterations				
Material				
Heat Treatment				
Hardness				
Plating				
General Tolerances				
Dimensions				
Angles				

Drawing No.: OS00C002

2009/07/30 (10:34:48)

This drawing is provisional and subject to our reconfirmation and/or revision without notice.



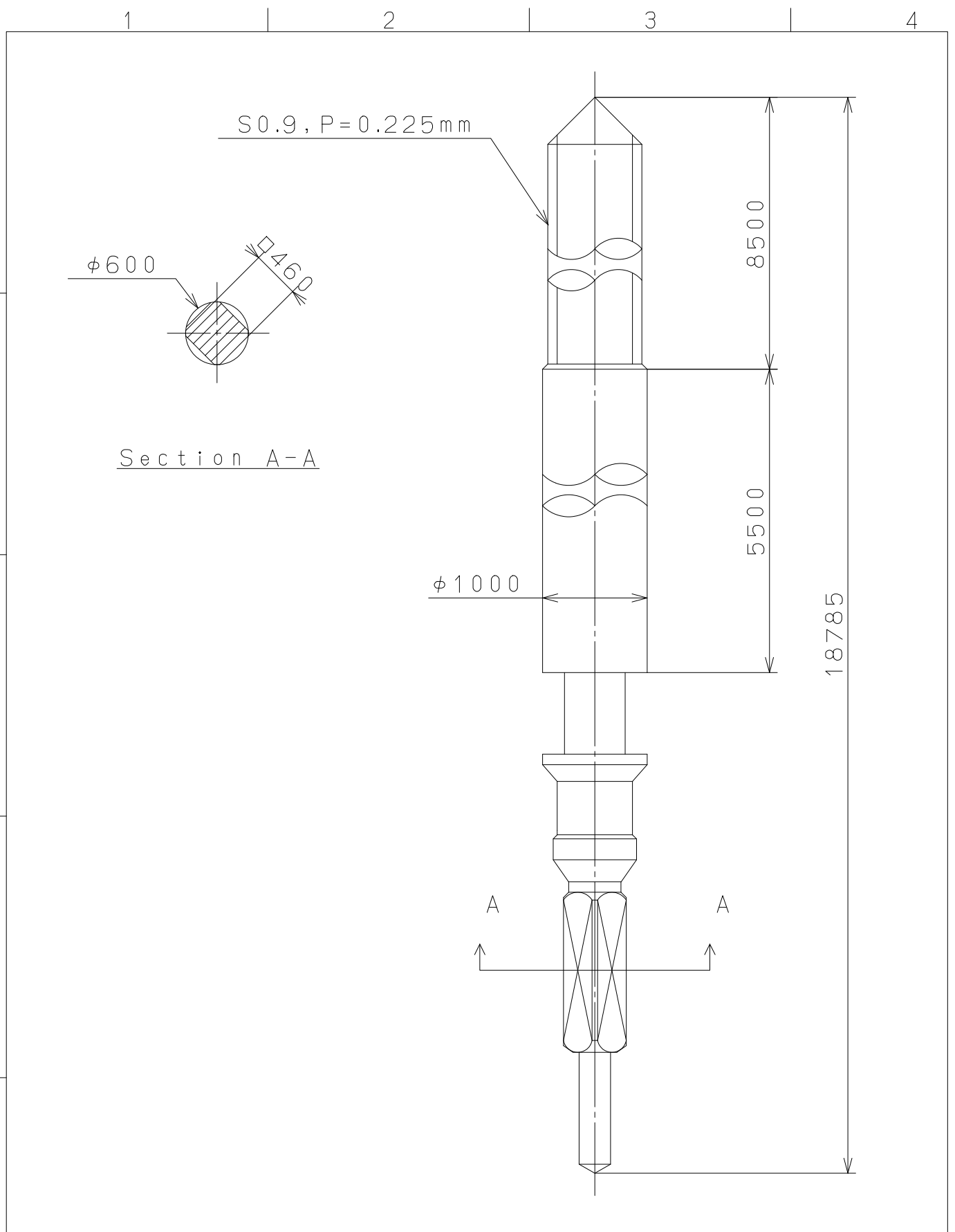
DC1, DC3, C2

CENTER

DH1 (DH2)

△			Quantity		Cal.NO.:
△			Unit	1 / 1000 mm	OS00-10A
△			Scale	4 : 1	Parts No.:
△			Date		
△			Drawn		
Mark	Date	Description	Appr.	Checked	Name:
		Alterations	Approved	N. Suzuki	Indications for Dial
Material					Drawing No.: OS00D000
Heat Treatment			General Tolerances		MIYOTA
Hardness			Dimensions		
Plating			Angles		
					CITIZEN WATCH CO., LTD. TOKYO, JAPAN

This drawing is provisional and subject to our reconfirmation and/or revision without notice.



△5			Quantity		Cal.NO.:	
△4			Unit	1 / 1000 mm		
△3			Scale	20 : 1	Parts No.:	
△2			Date		065-453	
△1			Drawn			
Mark	Date	Description	Appr.	Checked	E. Murakami	Name:
Alterations			Approved	SETTING STEM		
Material					Drawing No.: 4530S000	
Heat Treatment					MIYOTA CITIZEN WATCH CO., LTD. TOKYO, JAPAN	
Hardness						
Plating						