

Watch Movement Specification and Drawing

Standard Movement

PC20S



Movement Size: **6 3/4 × 8'''**
 Diameter: **Φ18.50mm**
 Height: **3.15mm**

Items	Ver.	Items	Ver.
Specification	1		
Appearance	1		
Casing	1		
Hand Fitting	1		
Hand Setting Stem	1		
Dial	1		
Casing Ring	1		
Assembly Plan	1		
Hands	1		

CAL.PC20S 6¾ X 8 Ligne Quartz Movement

Two Hands

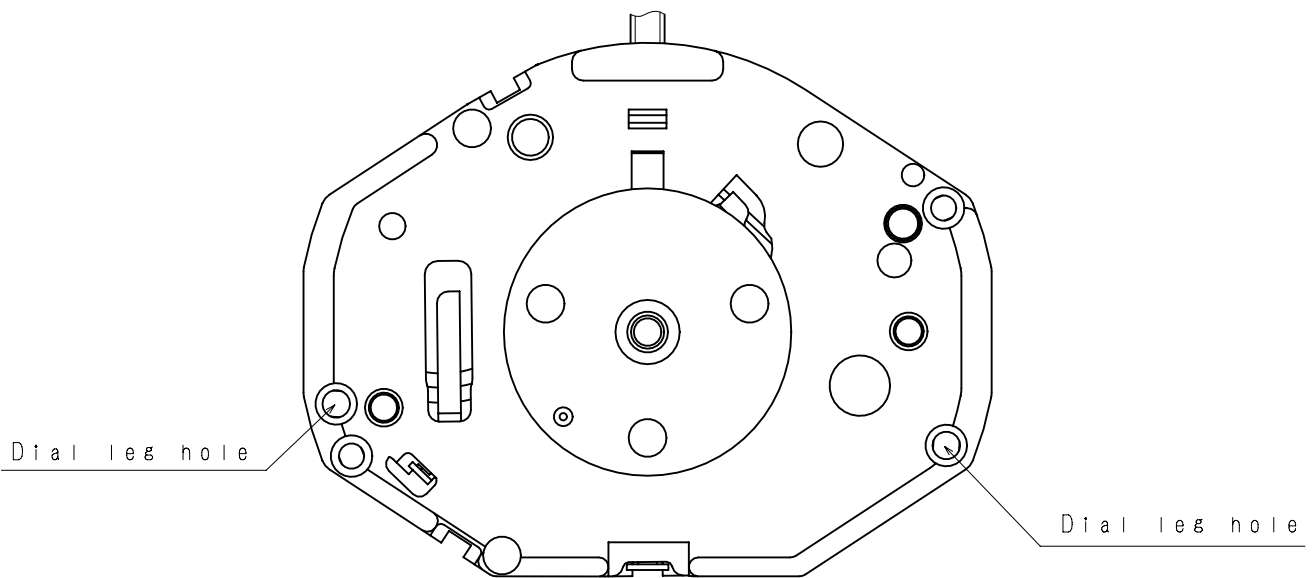
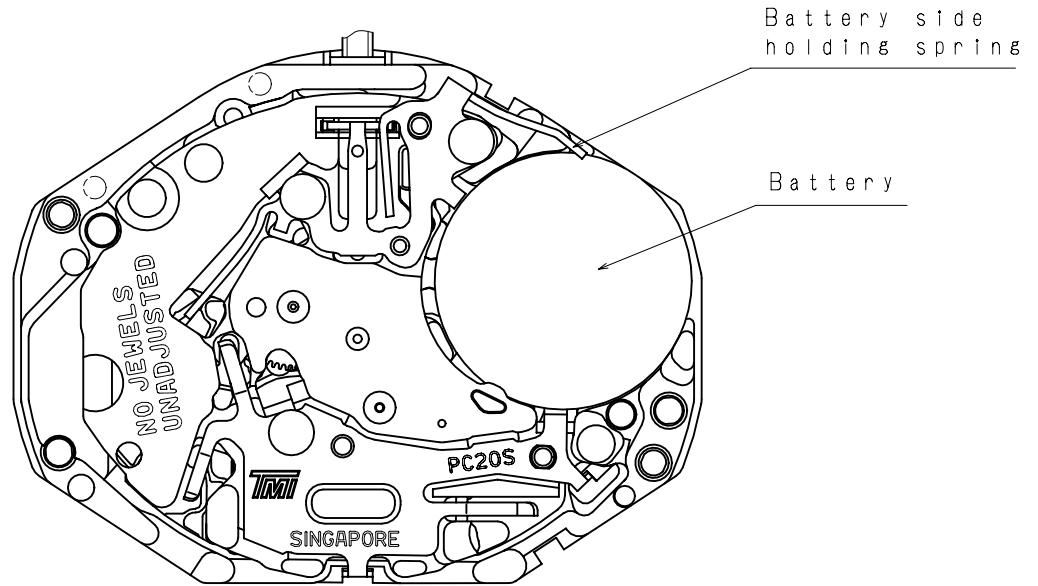
1. FUNCTION

· Jewel	0 jewel	
· Accuracy	Less than ±30 seconds / month (Normal temperature range)	
· Battery life	Approx. 2 years	
· Regulation hands unbalance	Hour hand	: Less than 0.30 μN·m (30 mg·mm)
	Minute hand	: Less than 0.30 μN·m (30 mg·mm)

2. USE AND TEST CONDITION

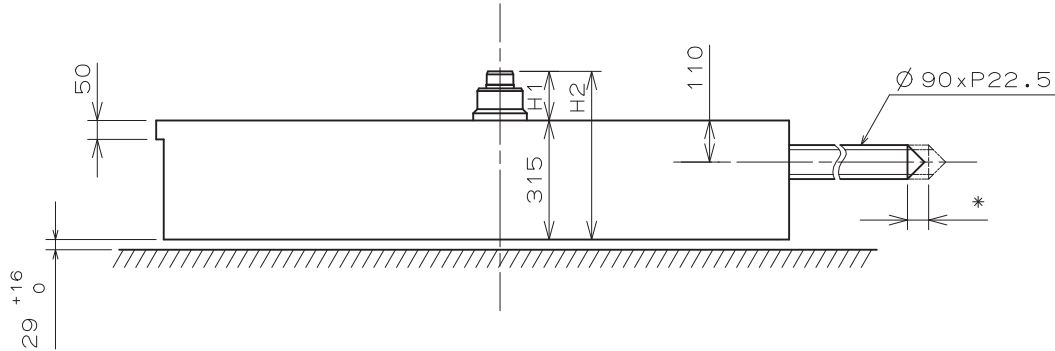
· Battery	SR626SW	(Recommended battery is SEIZAIKEN)
· Operation temperature range	From - 5 °C to + 50 °C	
· Antimagnetic	≥ 1600 A / m	(Direct current magnetic field)
· Test of accuracy	10 seconds	(Duration of measurement)

*** All specifications are subject to change without notice.**



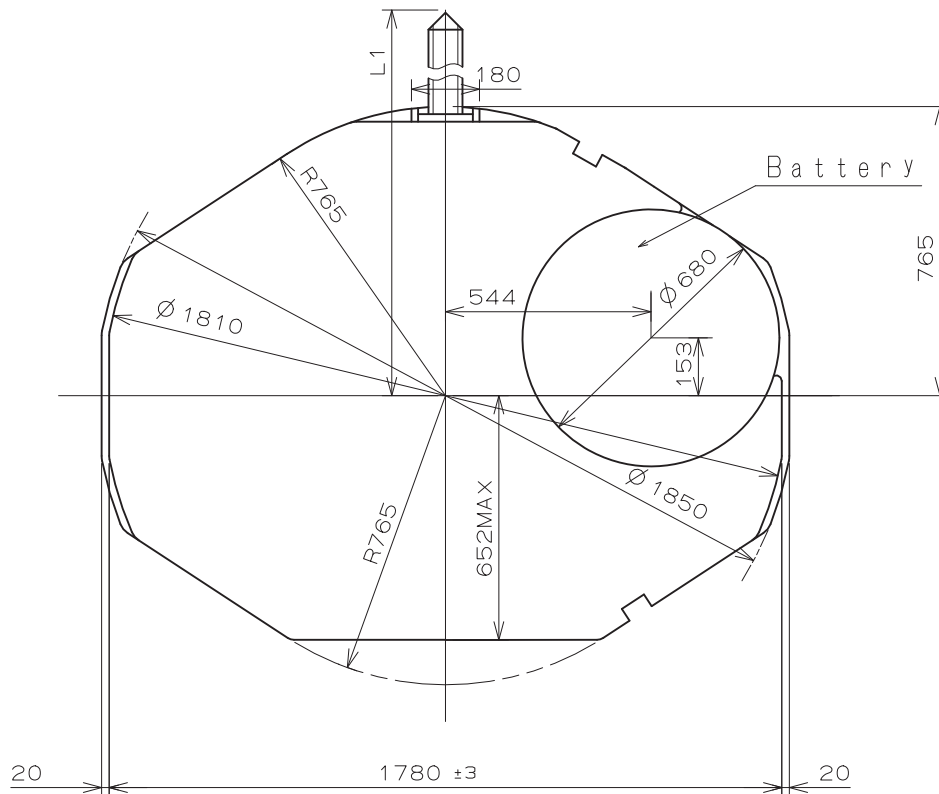
Battery Side Holding spring Type

*Pull out stroke:56

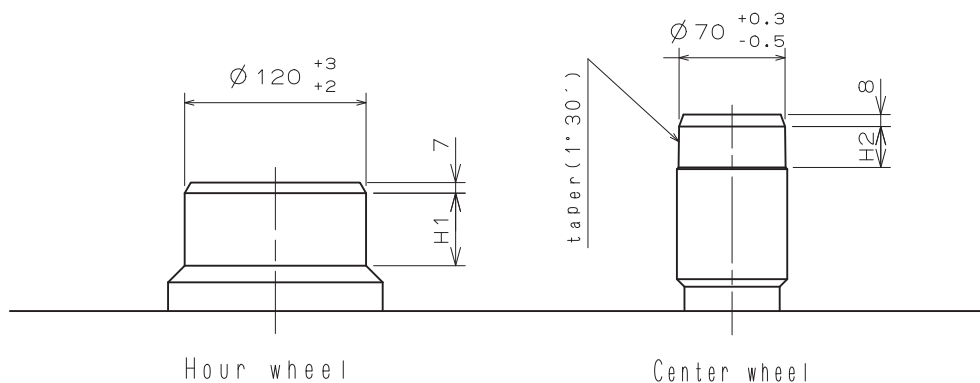


Center post 中心柱位		TYPE M 一般針高
Maximum height from main plate surface 與機芯平面的最大高度	H1	125
Total height incl. movement 機芯總高度	H2	440

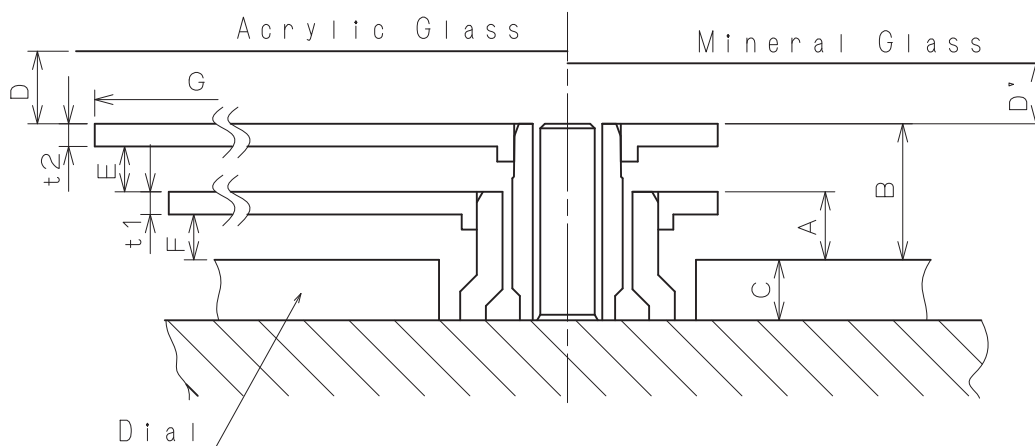
Hand Setting Stem	TYPE A	TYPE B
L1	2012	2472



Hour hand unbalance $\leq 0.3 \mu\text{N}\cdot\text{m} (30\text{mg}\cdot\text{mm})$
 Minute hand unbalance $\leq 0.3 \mu\text{N}\cdot\text{m} (30\text{mg}\cdot\text{mm})$

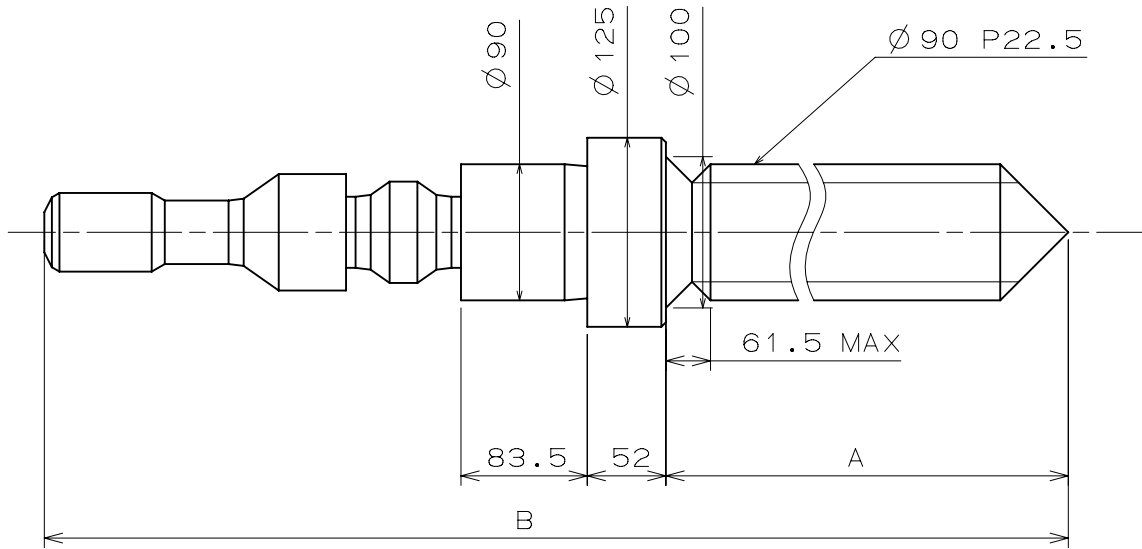


	Part No.		Dimension	
	Hour wheel 時針輪	Center wheel 分針輪	H1	H2
TYPE M 一般針高	0271 394	0221 024	48	27



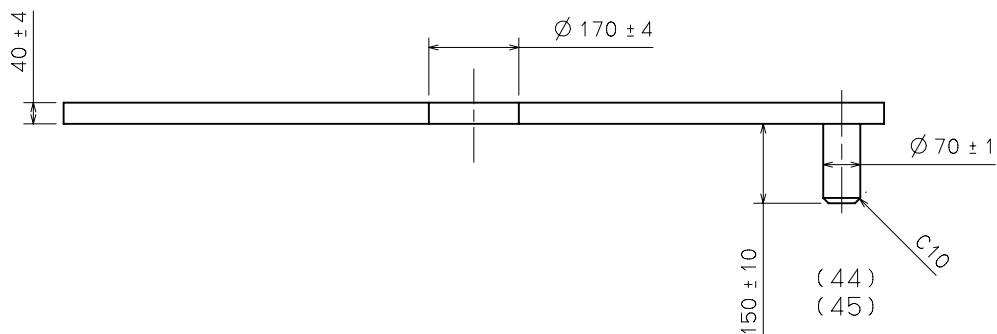
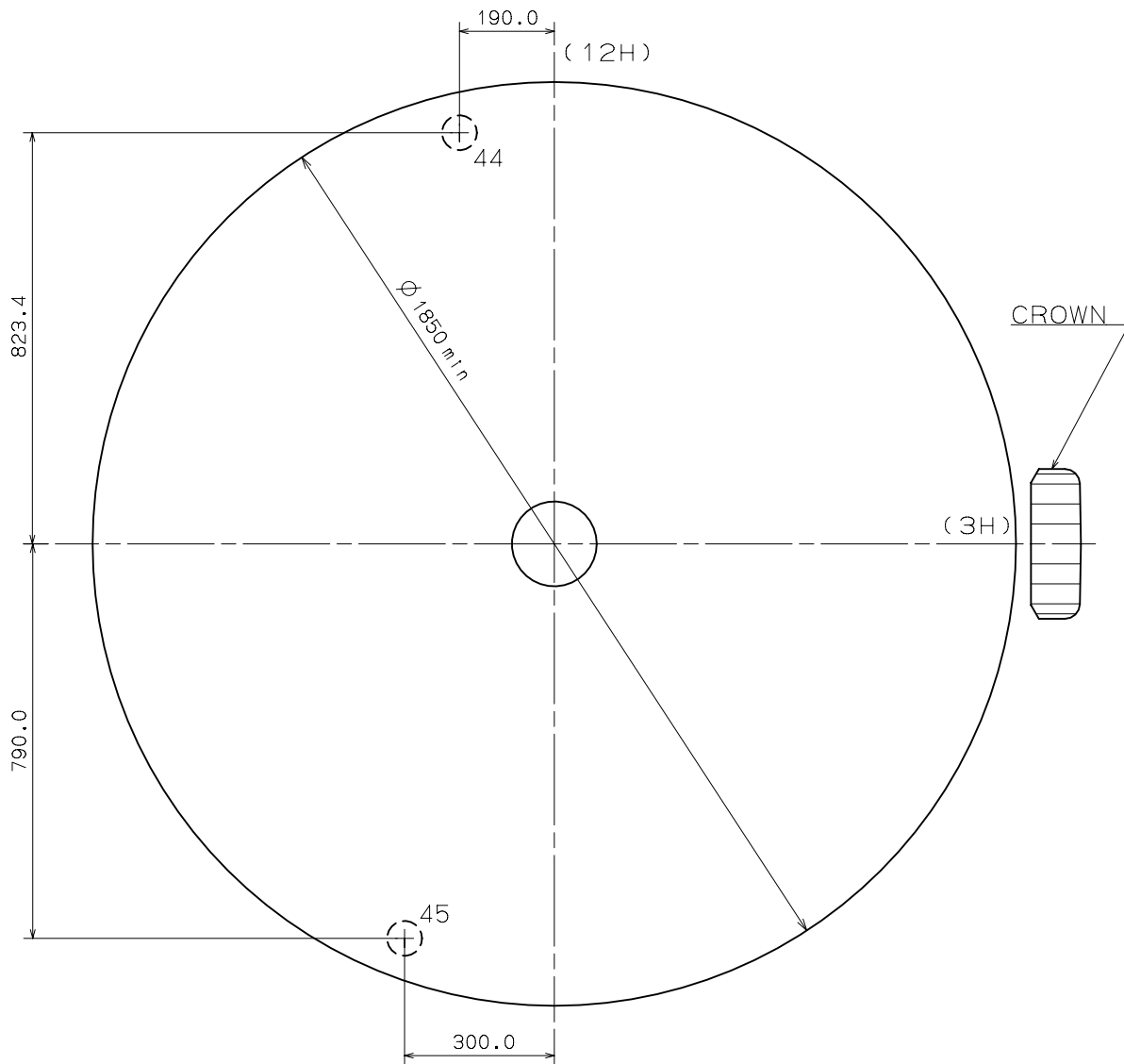
	A	B	C	D	D'	E	F	t1	t2
TYPE M 一般針高	45	85	40	*	*	25	30	15	15

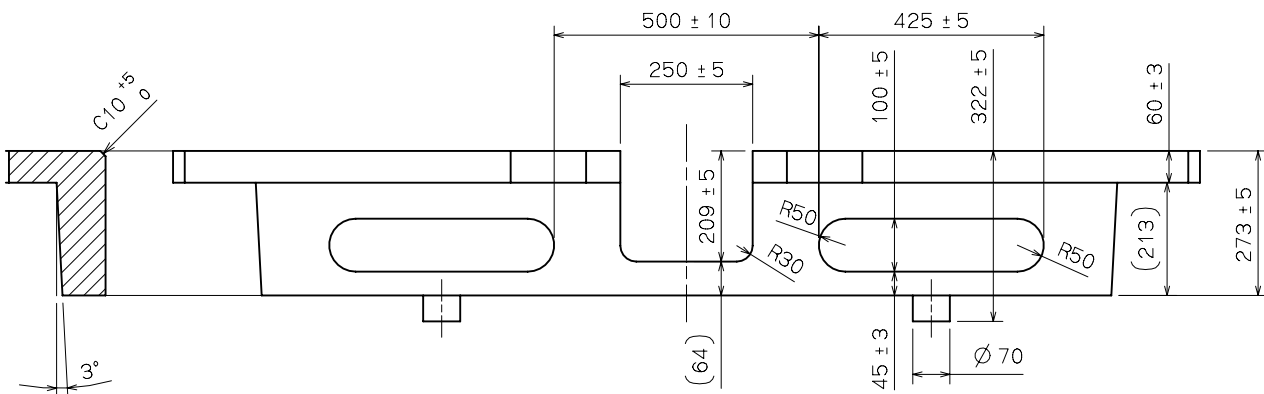
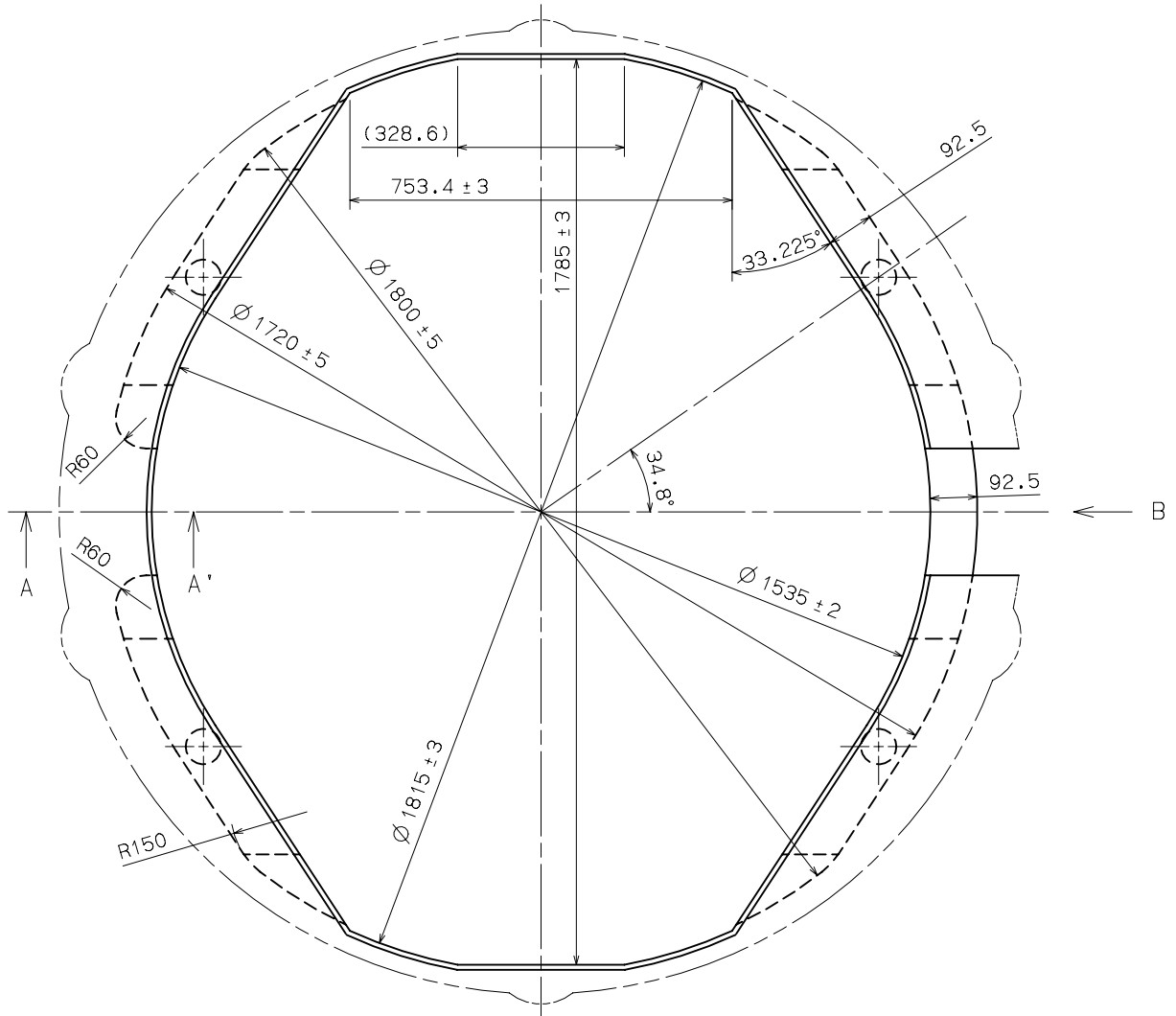
*	G		
	Max	800	800~850
D'	Min 40	Min 45	Min 65
D	Min 48	Min 53	Min 73



	Part No.	A	B
TYPE A	0354 122	1303	1714
TYPE B	0354 127	1763	2174

Do not lubricate the hand setting stem.



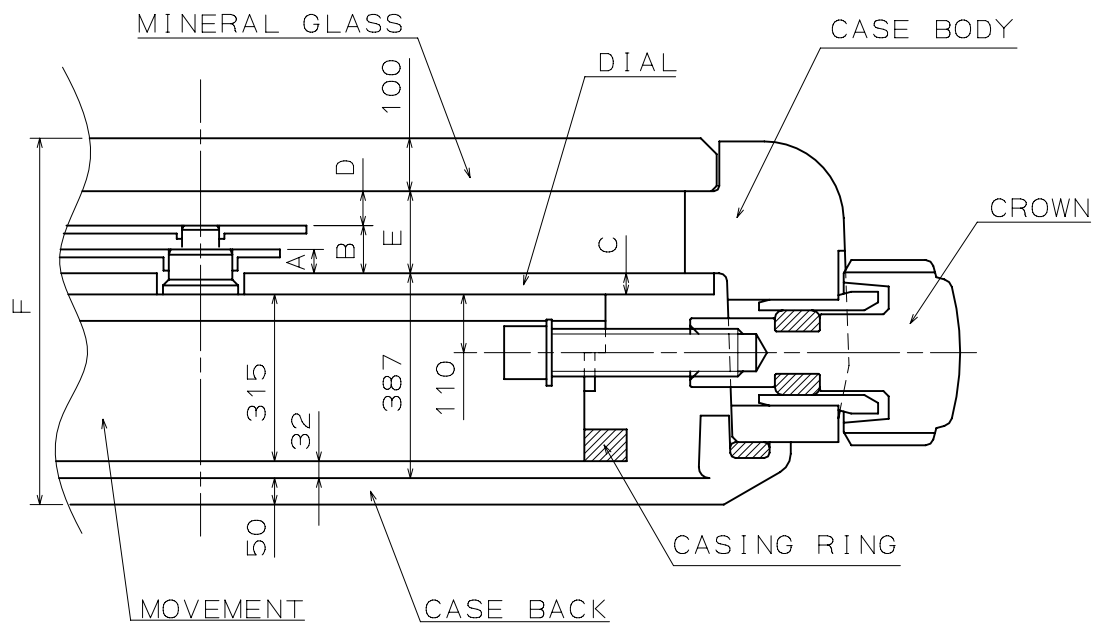


SECTIONAL VIEW of A-A'

SIDE VIEW from B DIRECTION

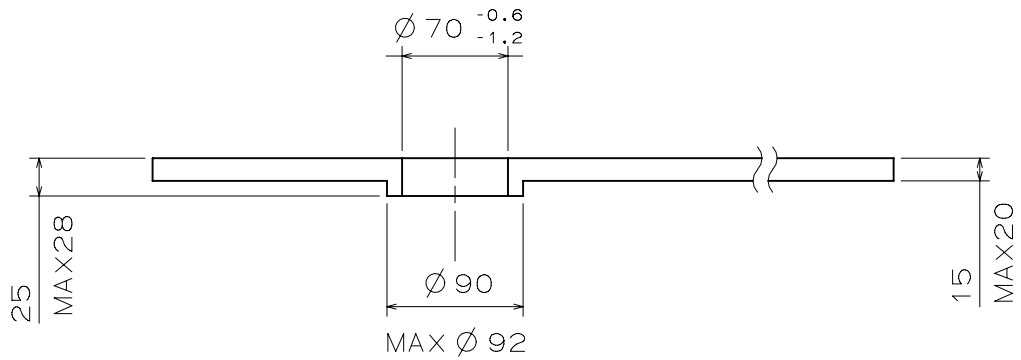
Unit : 1=1/100mm

Version : 1



	A	B	C	D	E	F
TYPE M	45	85	40	70	155	692

MINUTE



HOUR

