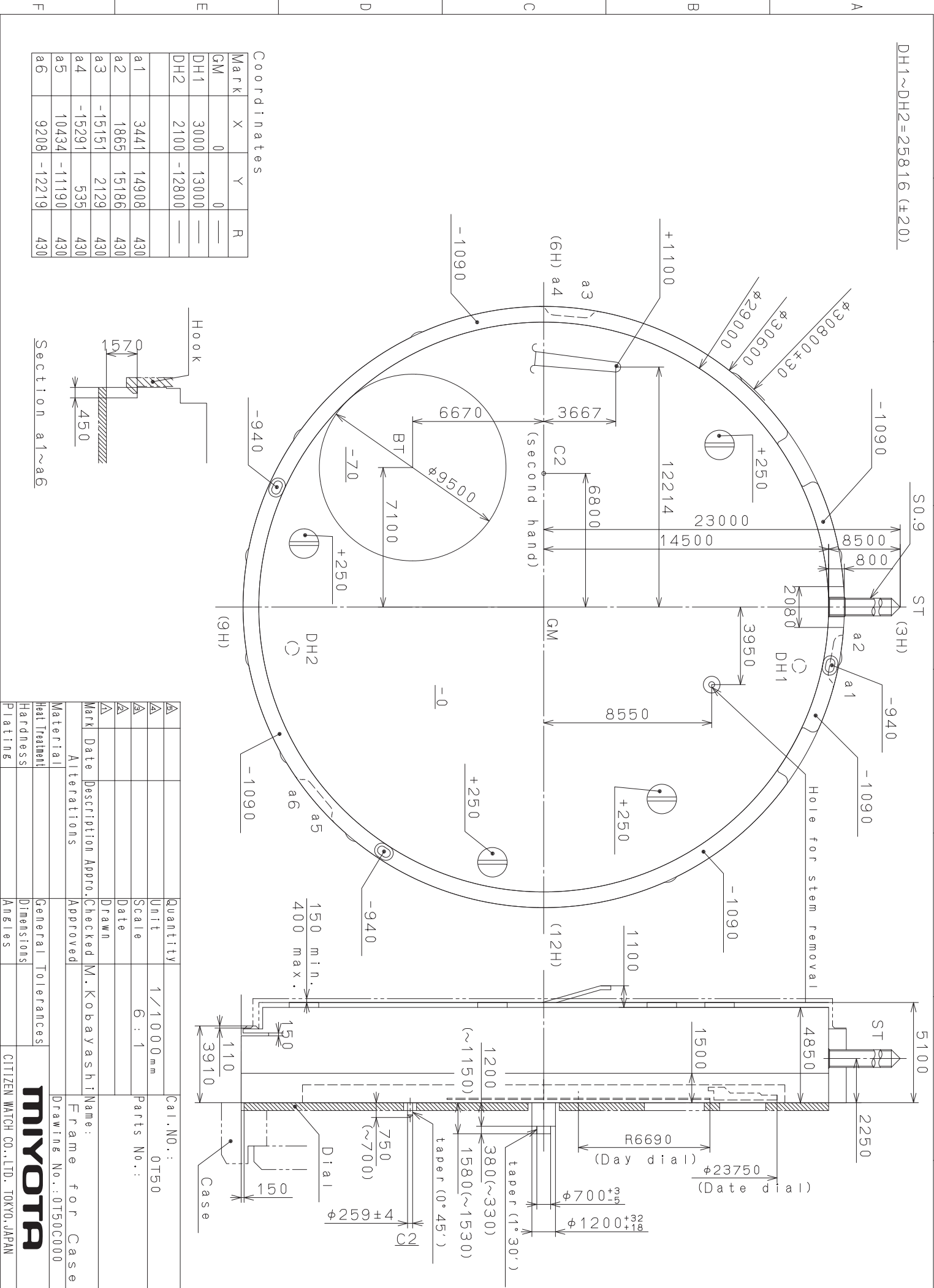


This drawing is provisional and subject to our reconfirmation and/or revision without notice.



DH1~DH2=25816 (±20)

Coordinates

Mark	X	Y	R
GM	0	0	—
DH1	3000	13000	—
DH2	2100	-12800	—
a1	3441	14908	430
a2	1865	15186	430
a3	-15151	2129	430
a4	-15291	535	430
a5	10434	-11190	430
a6	9208	-12219	430

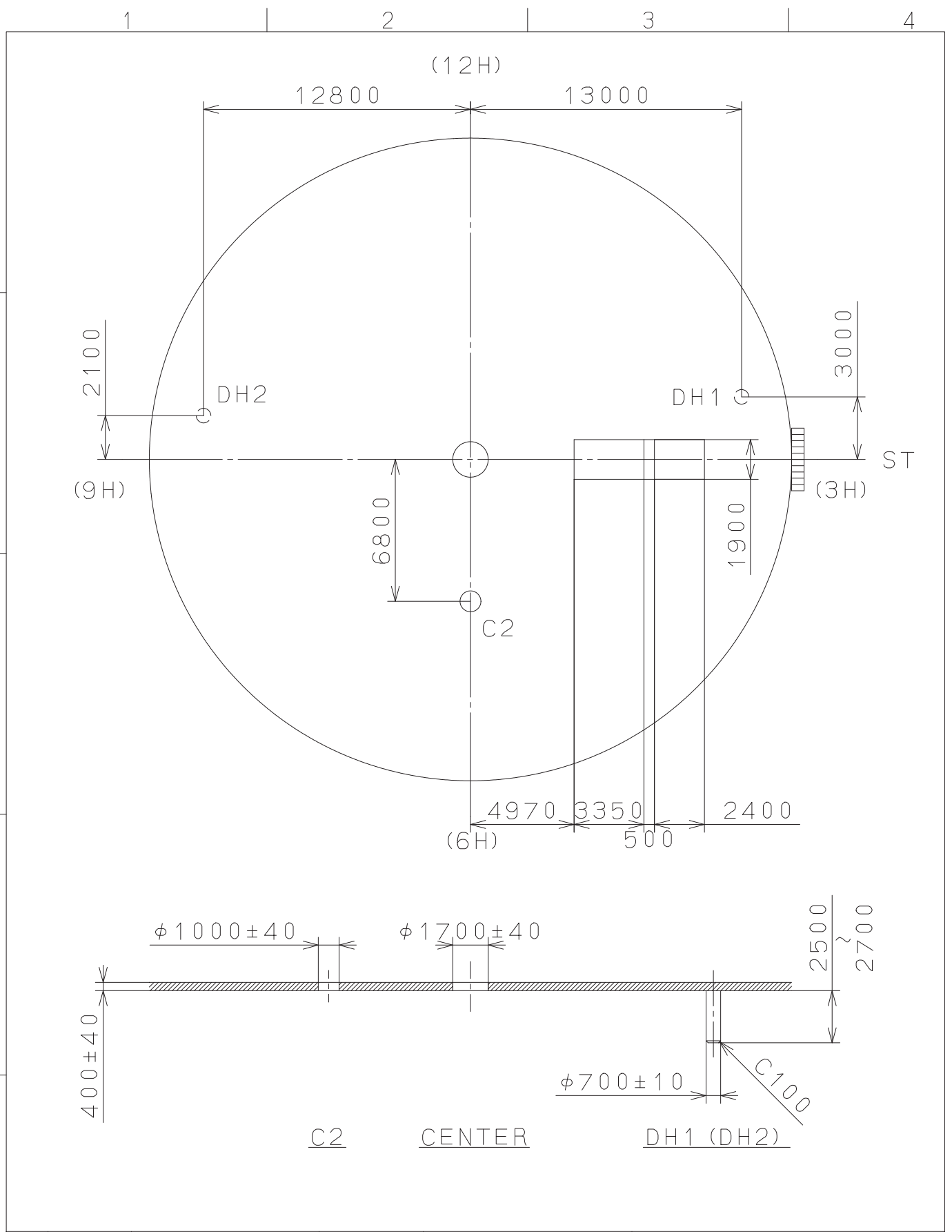
Hook

Section a1~a6

Alterations	Quantity	Unit	Cal. NO.:
Material	1	1/1000 mm	OT50
Heat Treatment		Scale	6 : 1
Hardness		Date	
Plating		Drawn	
		Checked	
		Approved	
Mark Date Description Appr. Checked M. Kobayashi		Name:	Frame for Case
Alterations		Approved	Drawing No.: OT50C000
Material		General Tolerances	
Heat Treatment		Dimensions	
Hardness		Angles	
Plating			

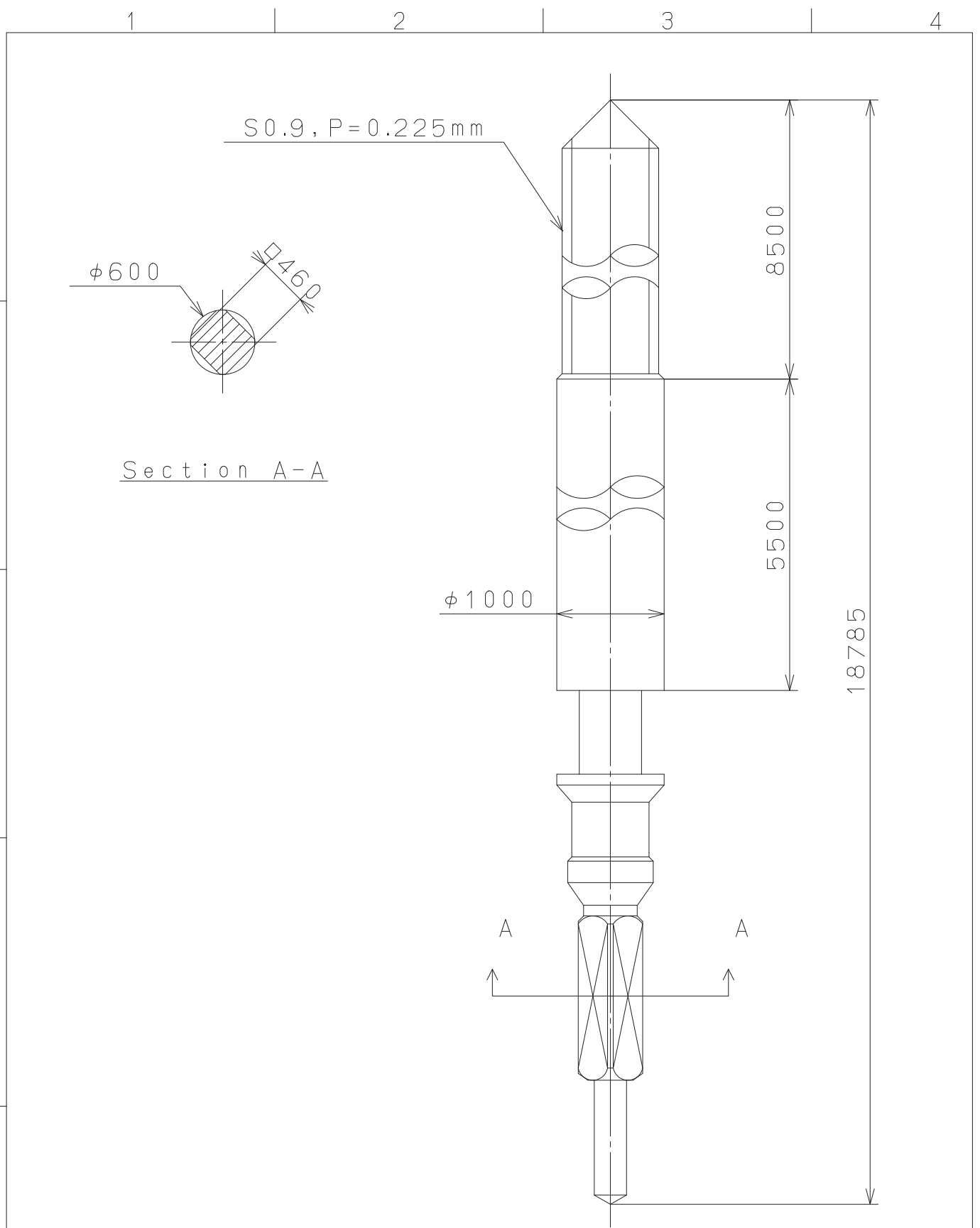
MIYOTA
CITIZEN WATCH CO., LTD. TOKYO, JAPAN

This drawing is provisional and subject to our reconfirmation and/or revision without notice.



⑤				Quantity		Cal.NO.:
④				Unit	1 / 1000 mm	OT50-00A
③				Scale	4 : 1	Parts No.:
②				Date		
①				Drawn		
Mark	Date	Description	Appro.	Checked	M. Kobayashi	Name:
		Alterations		Approved		Indications for Dial
Material						Drawing No.: OT50D000
Heat Treatment				General Tolerances		MIYOTA
Hardness				Dimensions		
Plating				Angles		
						CITIZEN WATCH CO., LTD. TOKYO, JAPAN

This drawing is provisional and subject to our reconfirmation and/or revision without notice.



⑤			Quantity		Cal.NO.:
④			Unit	1 / 1000 mm	
③			Scale	20 : 1	Parts No.:
②			Date		065-453
①			Drawn		
Mark	Date	Description	Appr.	Checked	E. Murakami
Alterations			Approved	Name:	
					SETTING STEM
Material					Drawing No.: 4530S000
Heat Treatment					MIYOTA CITIZEN WATCH CO., LTD. TOKYO, JAPAN
Hardness					
Plating					