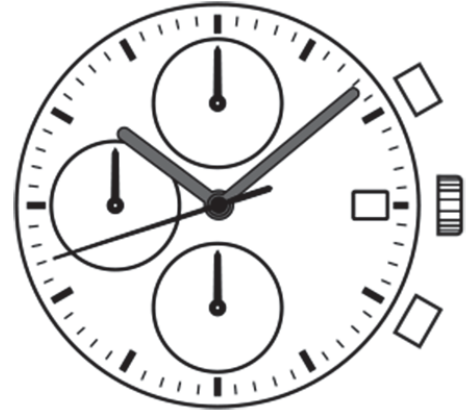


Watch Movement Specification and Drawing

Basic Chronograph Movement

VD57C



Movement Size: **12 3/4"**
 Diameter: **Φ29.50mm**
 Height: **4.57mm**

Items	Ver.	Items	Ver.
Specification	1	Assembly Plan - 3	1
Appearance	1	Assembly Plan - 4	1
Casing	1	Hands	1
Hand Fitting - 1	1		
Hand Fitting - 2	1		
Hand Setting Stem	1		
Dial - 1	1		
Dial - 2	1		
Dial - 3	1		
Dial - 4	1		
Dial - 5	1		
Assembly Plan - 1	1		
Assembly Plan - 2	1		

CAL.VD57C 12 $\frac{3}{4}$ Ligne Quartz Movement

Three Hands with 3 Eyes & Date

Small Chronograph 1 / 10 Second, Small Chronograph Second & Minute Hands

1. FUNCTION

- Jewel 0 jewel
- Accuracy Less than ± 20 seconds / month (Normal temperature range)
- Battery life Approx. 3 years
- Regulation hands unbalance
 - Hour hand : Less than $0.60 \mu\text{N}\cdot\text{m}$ (60 mg $\cdot\text{mm}$)
 - Minute hand : Less than $0.90 \mu\text{N}\cdot\text{m}$ (90 mg $\cdot\text{mm}$)
 - Second hand : Less than $0.09 \mu\text{N}\cdot\text{m}$ (9 mg $\cdot\text{mm}$)
 - Small chronograph hands : Less than $0.05 \mu\text{N}\cdot\text{m}$ (5 mg $\cdot\text{mm}$)
- The moment of inertia
 - Small chronograph 1/10 second hand (Disc hand) : Less than 400 mg $\cdot\text{mm}^2$
- Additional function
 - Date display with quick date correction
 - Chronograph : up to 1 minute in 1/10 second (2 seconds per round)
: up to 60 minutes in 1 second split time

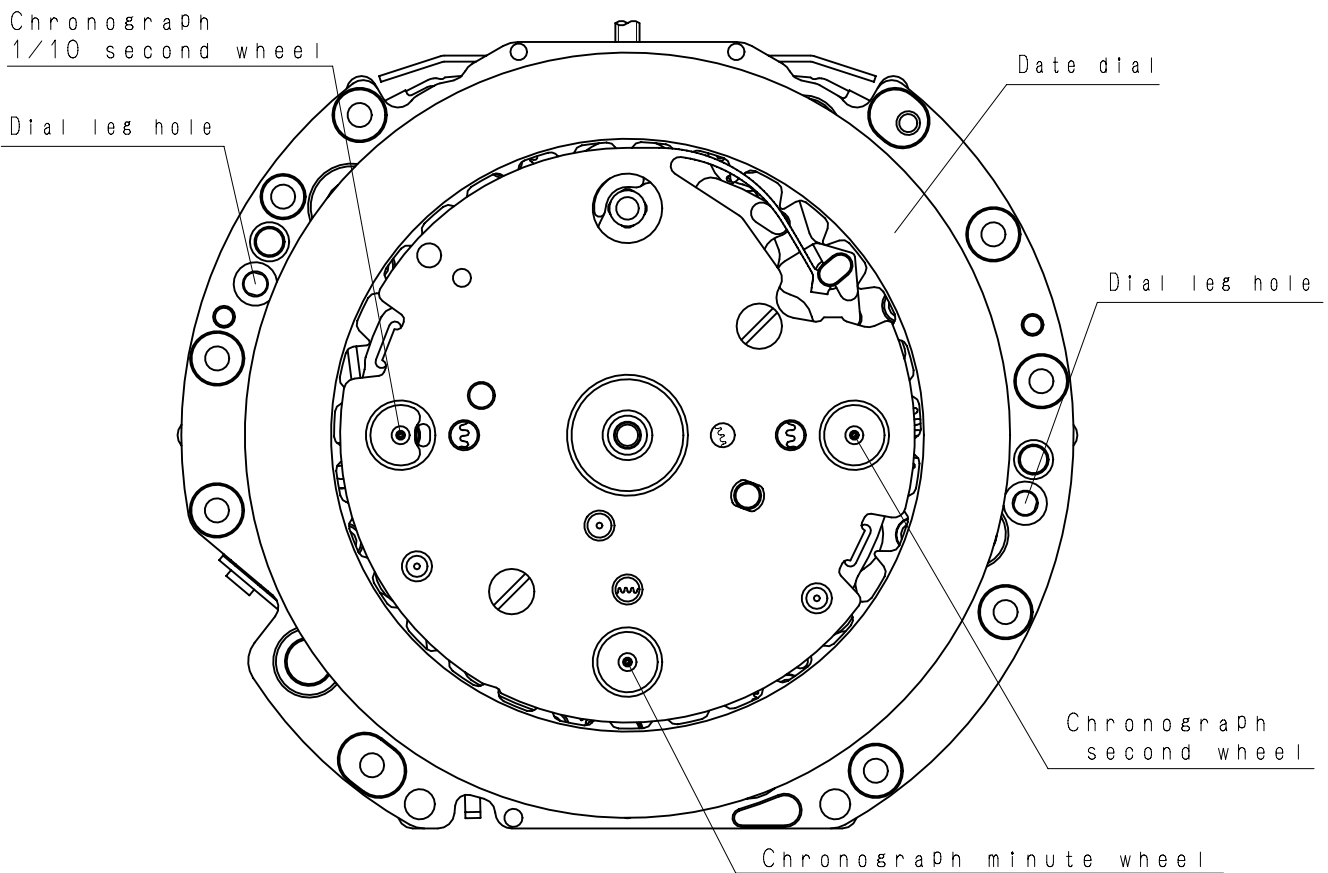
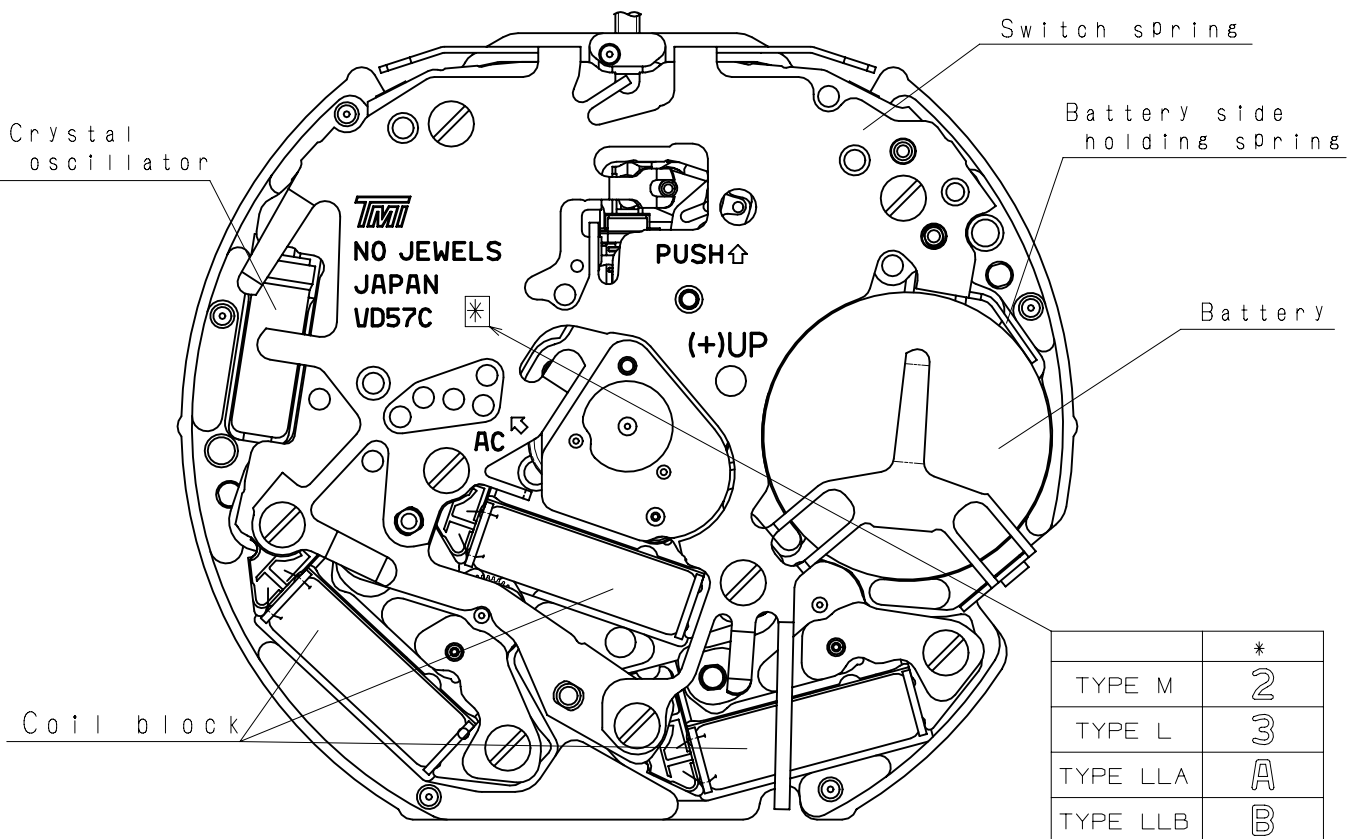
2. USE AND TEST CONDITION

- Battery SR920SW (Recommended battery is SEIZAIKEN)
- Operation temperature range From - 5 °C to + 50 °C
- Antimagnetic ≥ 1600 A / m (Direct current magnetic field)
- Test of accuracy 10 seconds (Duration of measurement)

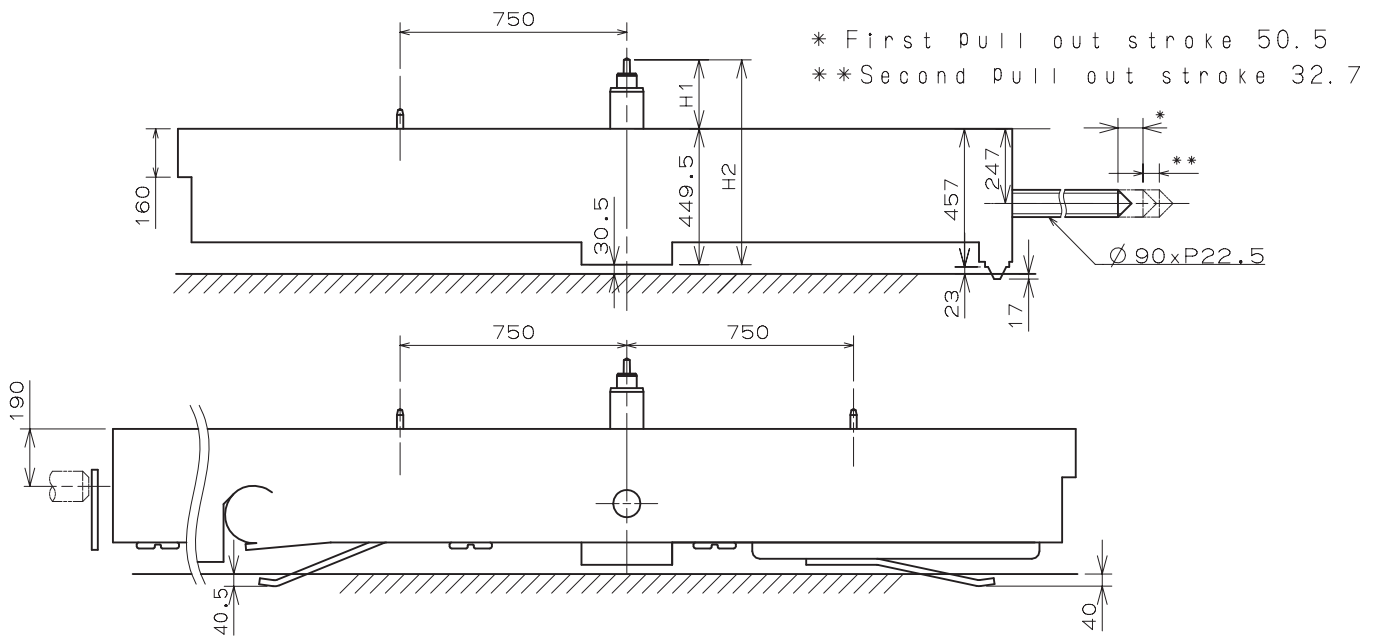
*** All specifications are subject to change without notice.**

Appearance

VD57C

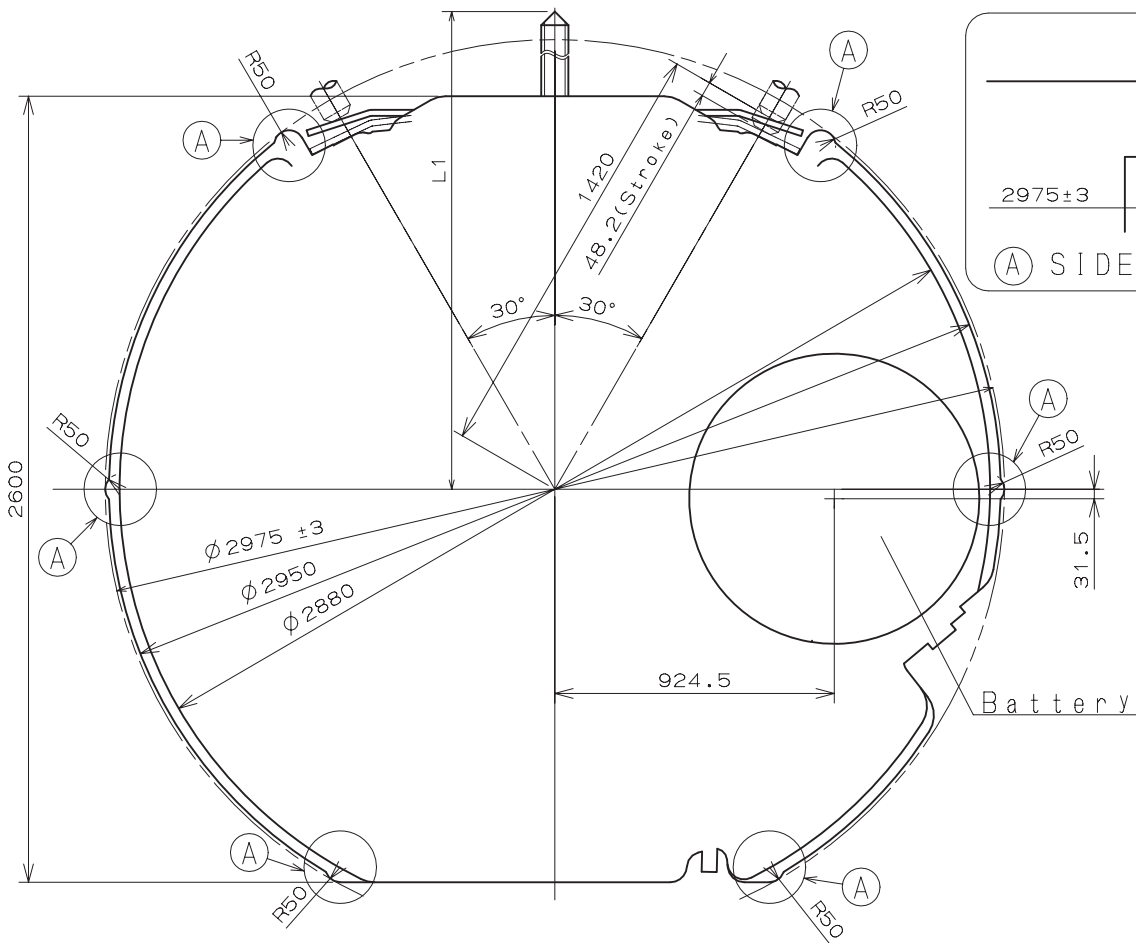


Version : 1



Center post 中心柱位		TYPE M 一般針高	TYPE L 高針	TYPE LLA/LLB 特高針A/特高針B
Maximum height from main plate surface 與機芯平面的最大高度	H1	228	273	354
Total height incl. movement 機芯總高度	H2	677.5	722.5	803.5

Hand Setting Stem	TYPE A	TYPE B
L1	2285	2861

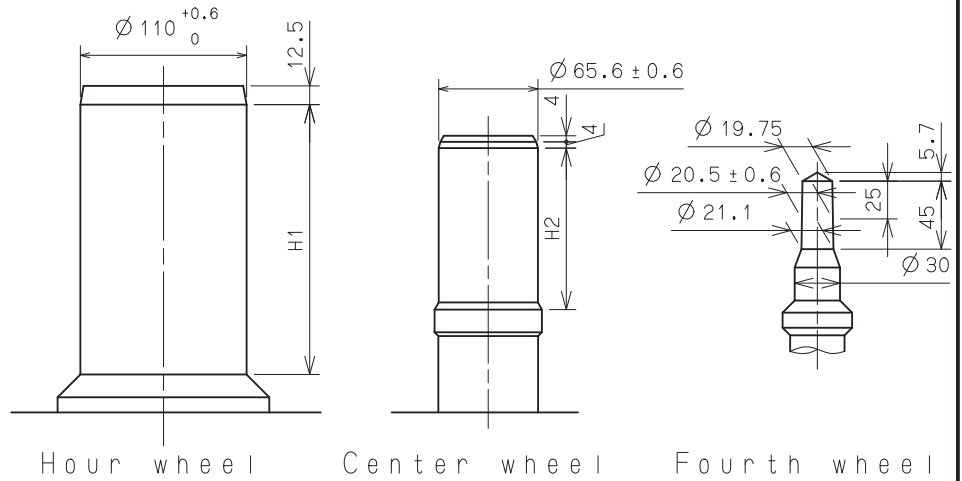


- ※Unbalance
 - Hour hand $\leq 0.6 \mu\text{N} \cdot \text{m} (60\text{mg} \cdot \text{mm})$
 - Minute hand $\leq 0.9 \mu\text{N} \cdot \text{m} (90\text{mg} \cdot \text{mm})$
 - Second hand $\leq 0.09 \mu\text{N} \cdot \text{m} (9\text{mg} \cdot \text{mm})$
 - Chronograph hand $\leq 0.05 \mu\text{N} \cdot \text{m} (5\text{mg} \cdot \text{mm})$

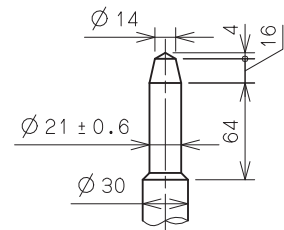
- ※Moment of inertia
 - 1/10 Chronograph hand $\leq 0.4 \mu\text{g} \cdot \text{m}^2 (400\text{mg} \cdot \text{mm}^2)$ (Disc hand available)

TYPE M/L

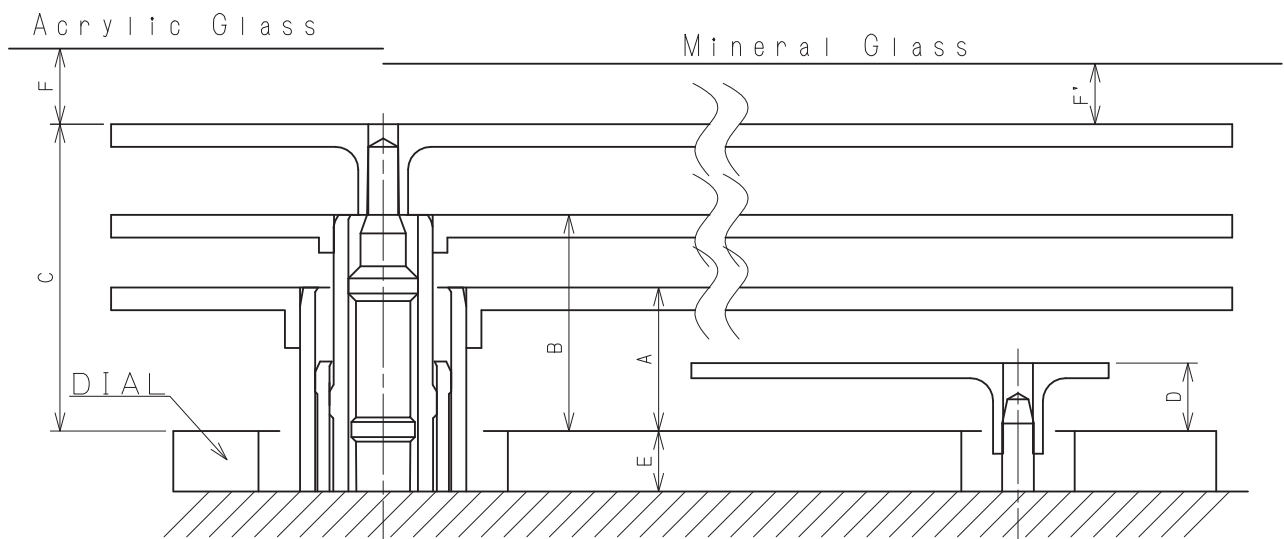
	H1	H2
TYPE M 一般針高	178.5	109
TYPE L 高針	223.5	154



Part name		Part No.	
		TYPE M 一般針高	TYPE L 高針
Hour wheel	時針輪	0271 407	0273 037
Center wheel	分針輪	0221 203	0221 202
Fourth wheel	秒針輪	0241 178	0241 489
Chronograph minute wheel	計時分針輪	0902 008	0902 004
Chronograph second wheel	計時秒針輪	0888 009	0888 011
Chronograph 1/10 second wheel	1/10計時秒針輪	0888 009	0888 011



Chronograph minute wheel
 Chronograph second wheel
 Chronograph 1/10 second wheel

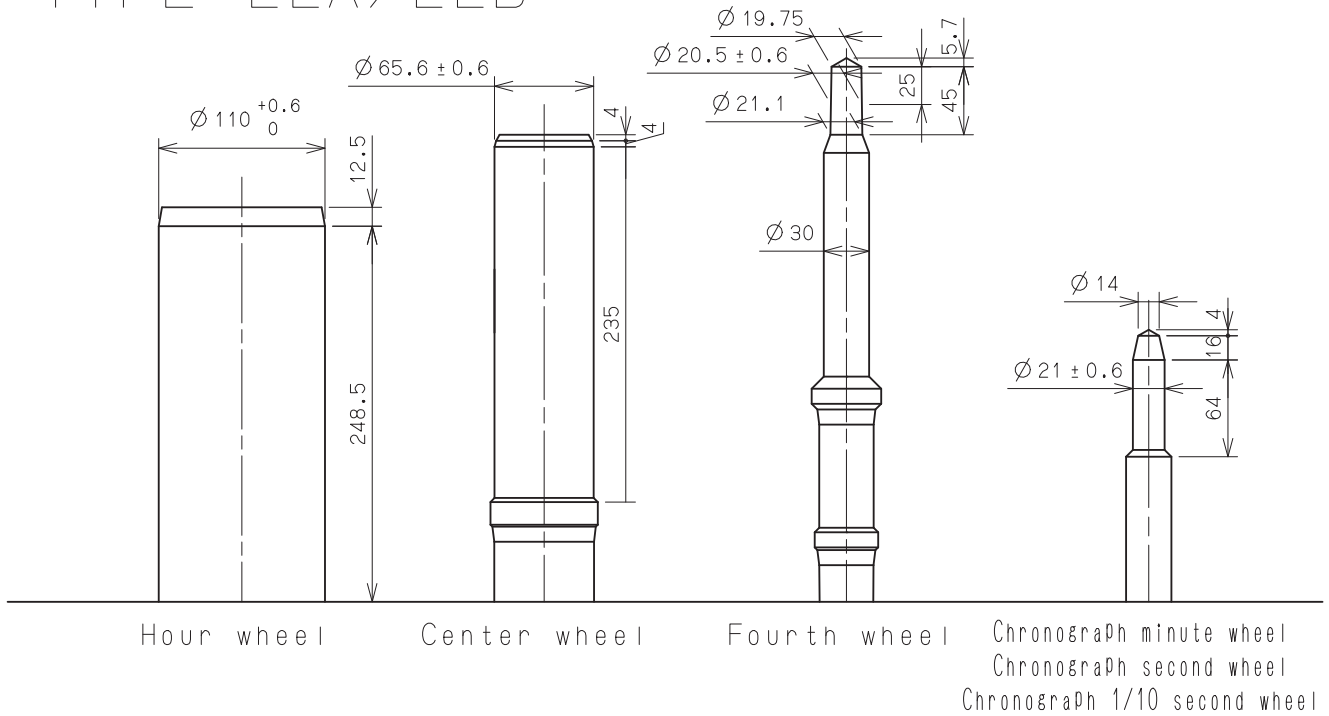


	A	B	C	D	E	F	F'
TYPE M 一般針高	95	143	203	45	40	50	40
TYPE L 高針	95	143	203	45	85	50	40

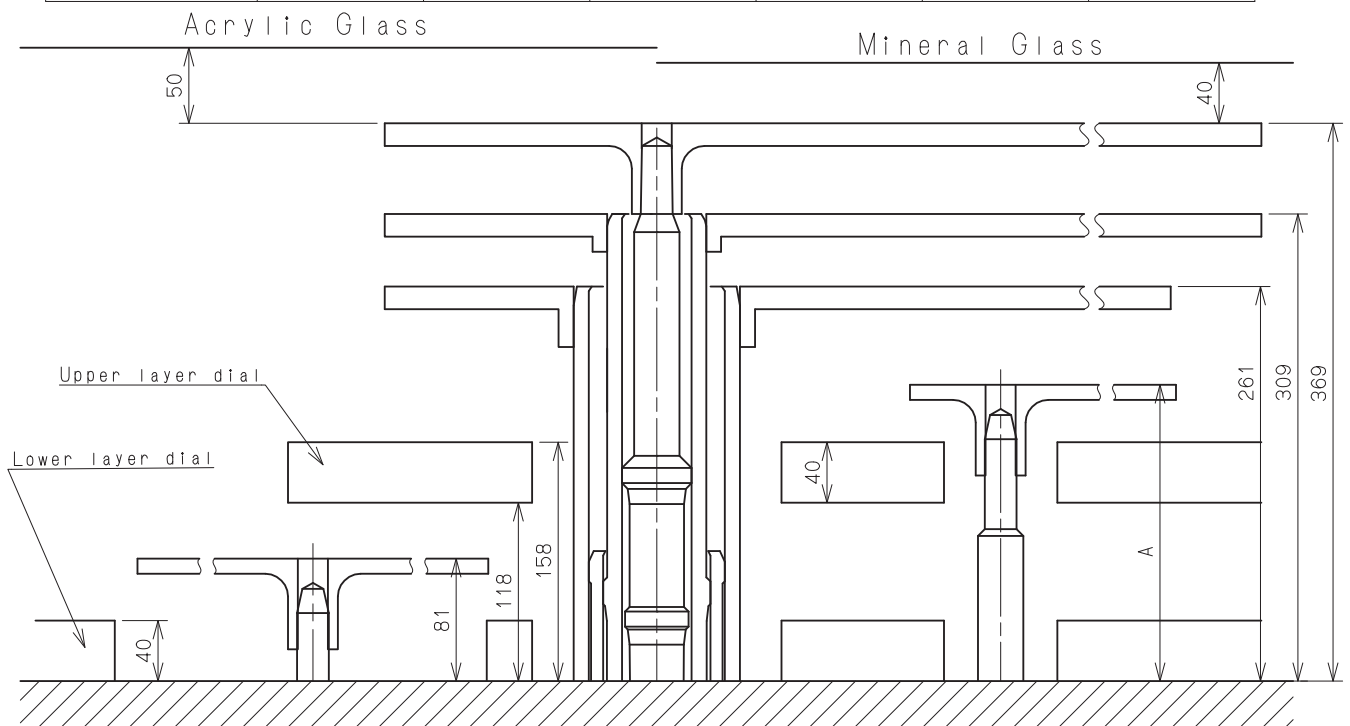
Unit : 1=1/100mm

Version : 1

TYPE LLA/LLB



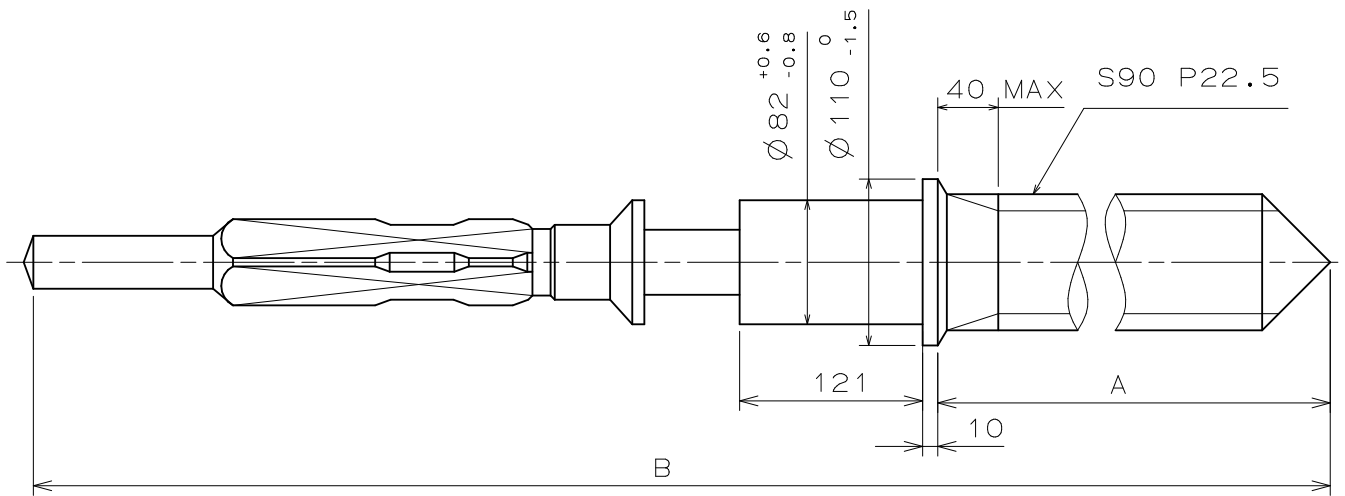
	Part No.					
	Hour wheel 時針輪	Center wheel 分針輪	Fourth wheel 秒針輪	Chronograph minute wheel 計時分針輪	Chronograph second wheel 計時秒針輪	Chronograph 1/10 second wheel 1/10計時秒針輪
TYPE LLA 特高針A	0273 199	0221 201	0144 199	0902 199	0888 199	0888 009
TYPE LLB 特高針B				0902 008	0888 009	



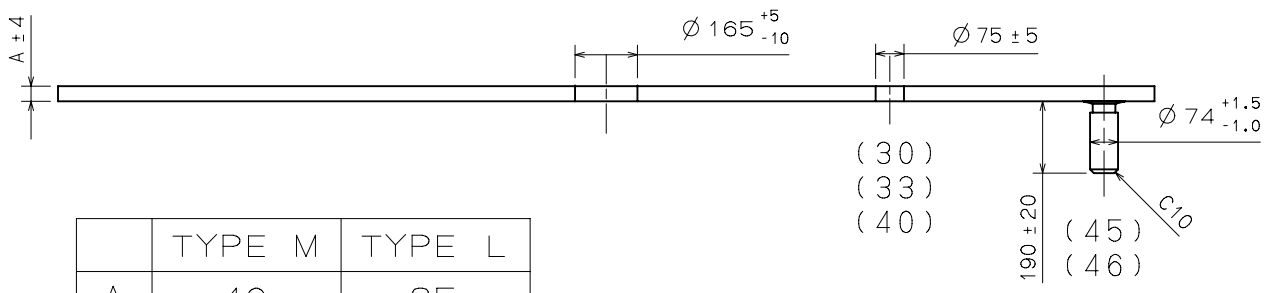
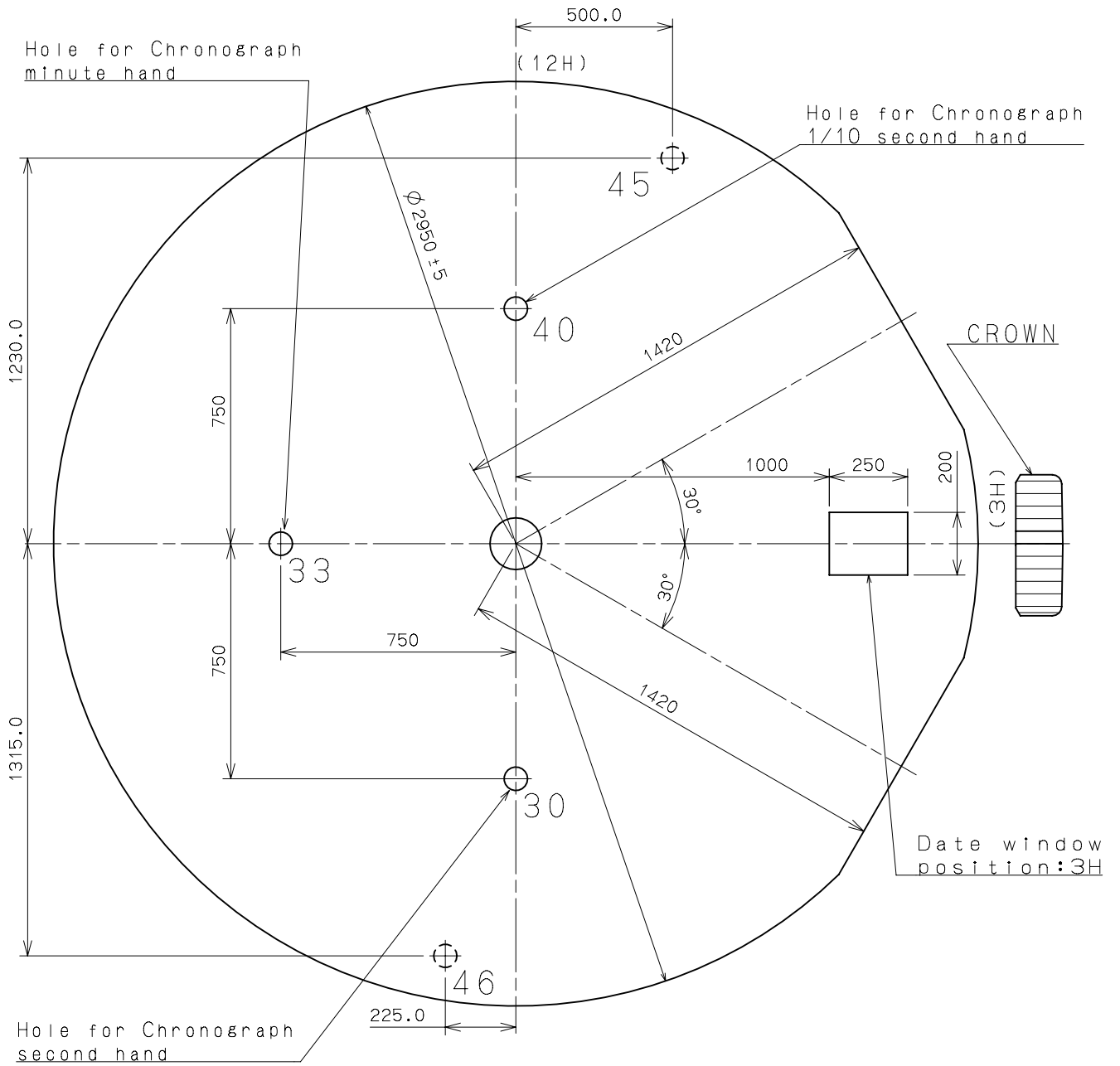
Chronograph 1/10 second wheel

Chronograph minute wheel
Chronograph second wheel

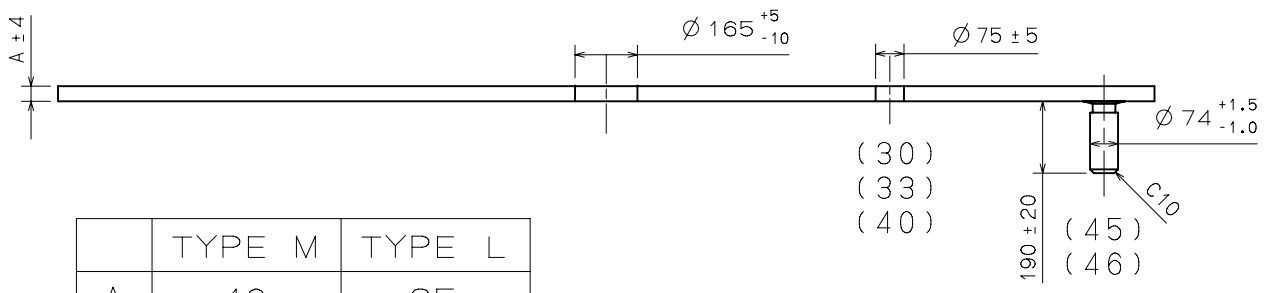
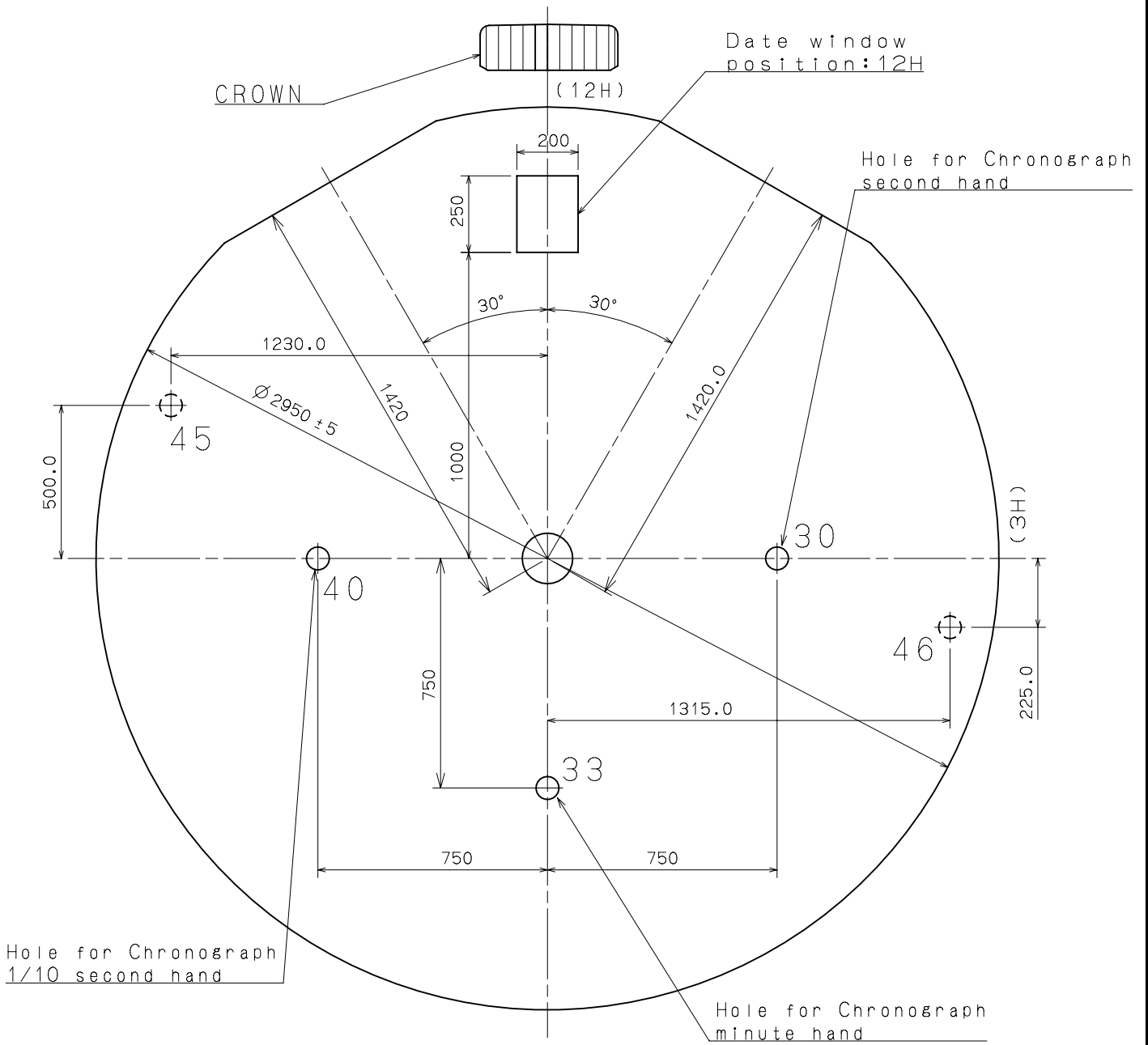
	A
TYPE LLA 特高針A	196
TYPE LLB 特高針B	81



	Part No.	A	B
TYPE A	0351 177	1371	1969
TYPE B	0351 122	1947	2545



	TYPE M	TYPE L
A	40	85



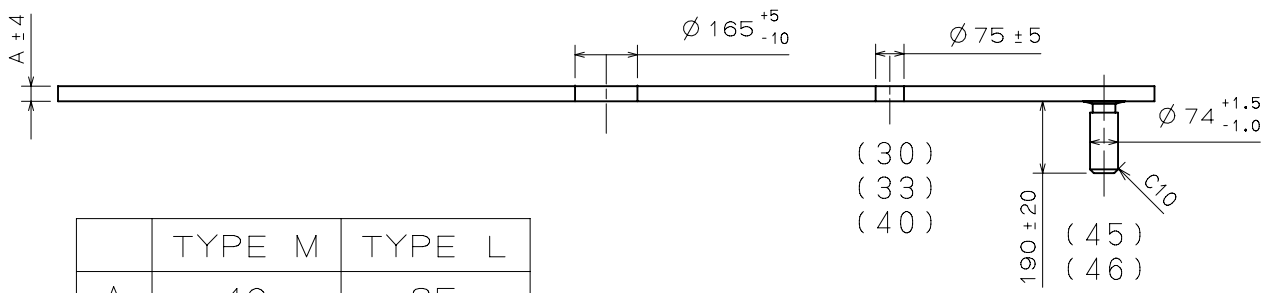
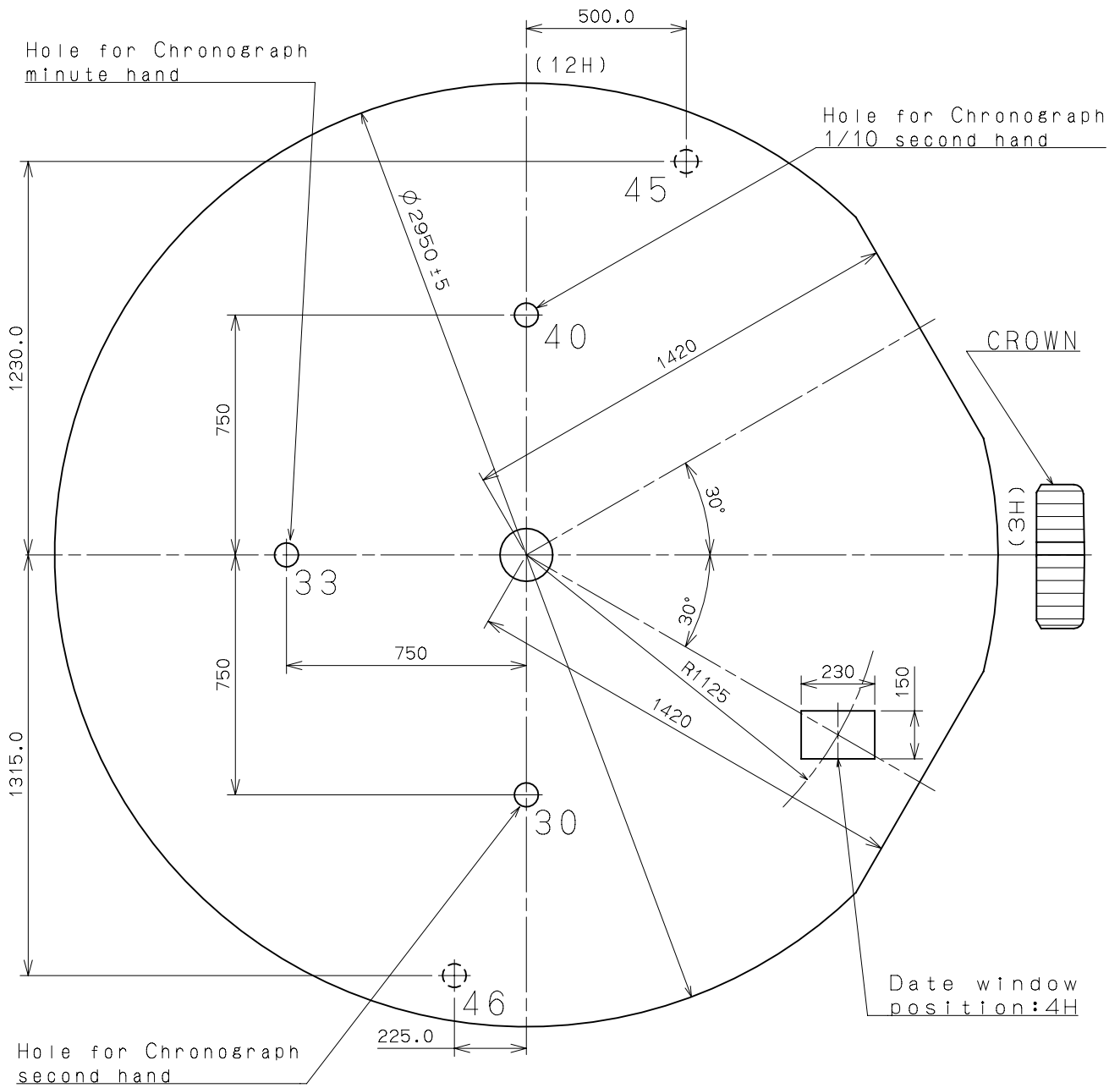
	TYPE M	TYPE L
A	40	85

Unit : 1=1/100mm

Version : 1

Dial - 3

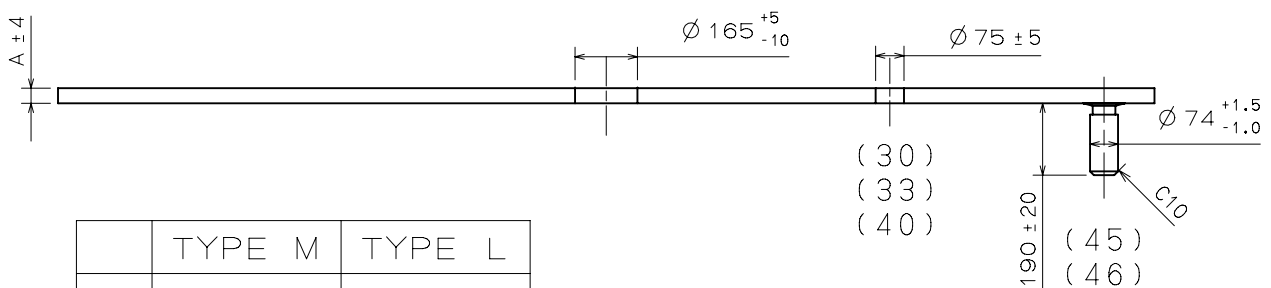
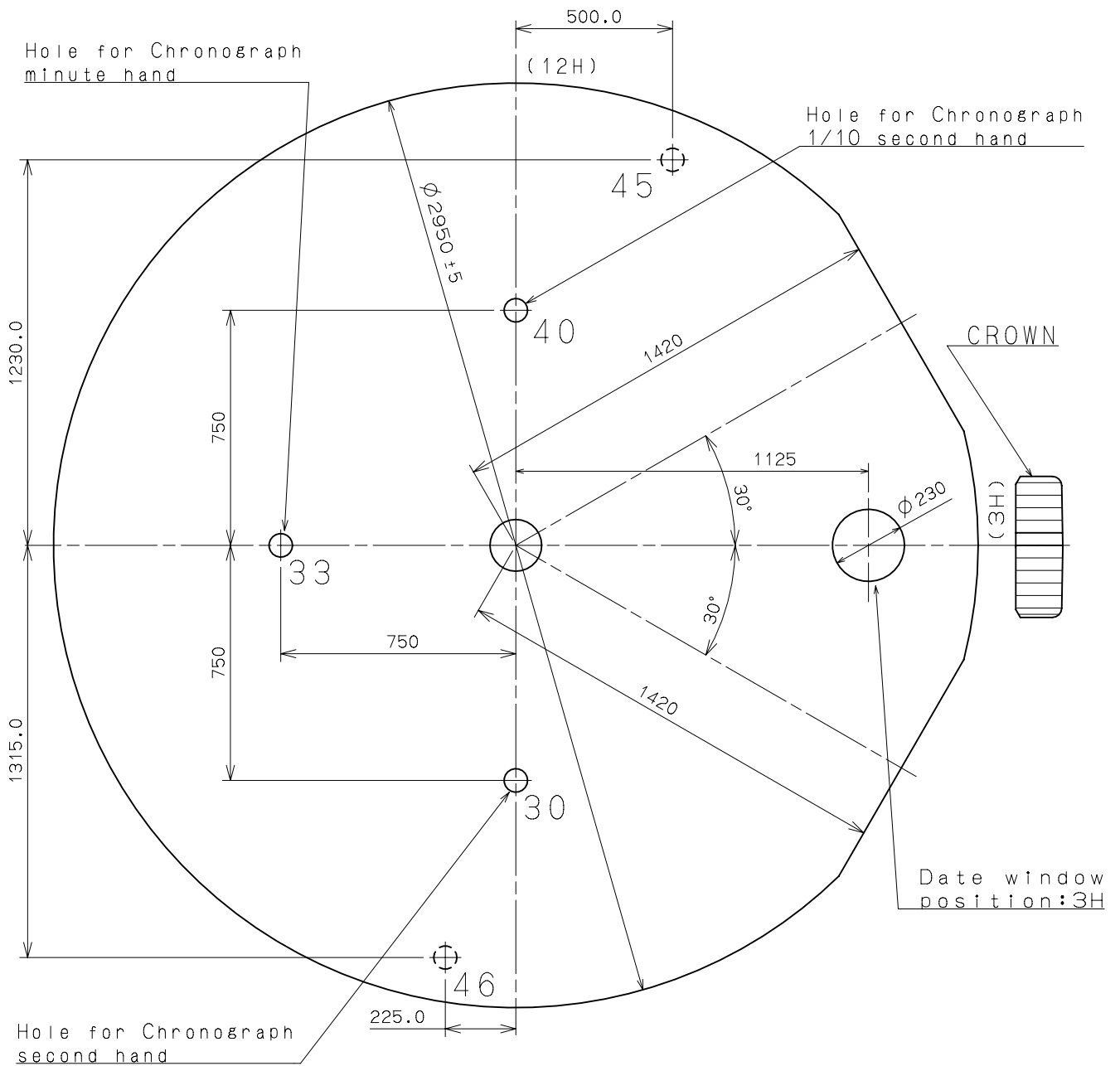
VD57C



	TYPE M	TYPE L
A	40	85

Unit : 1=1/100mm

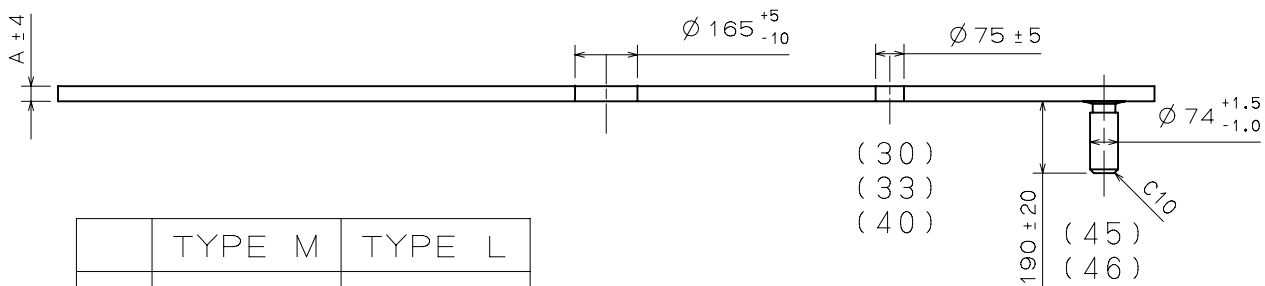
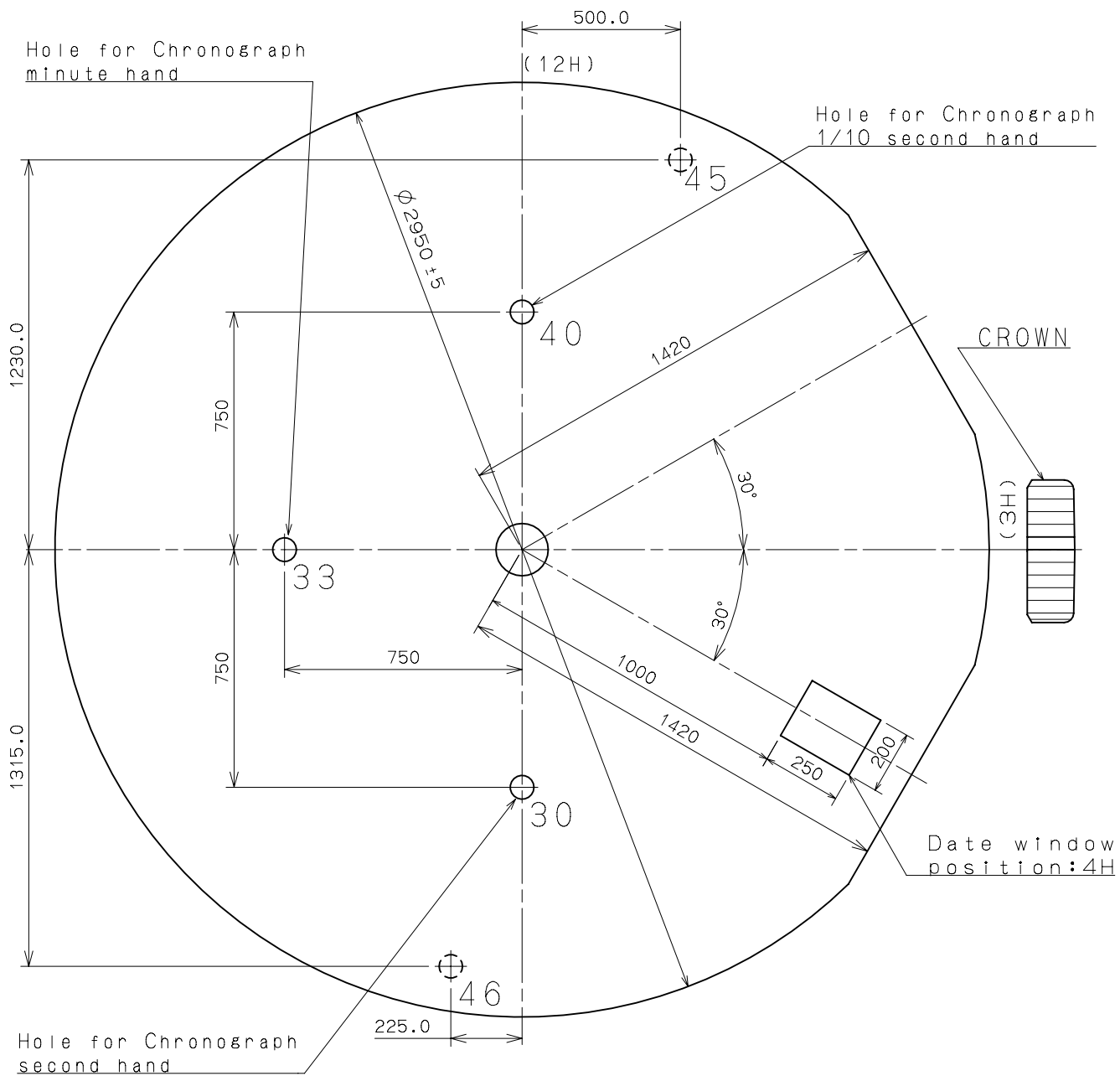
Version : 1



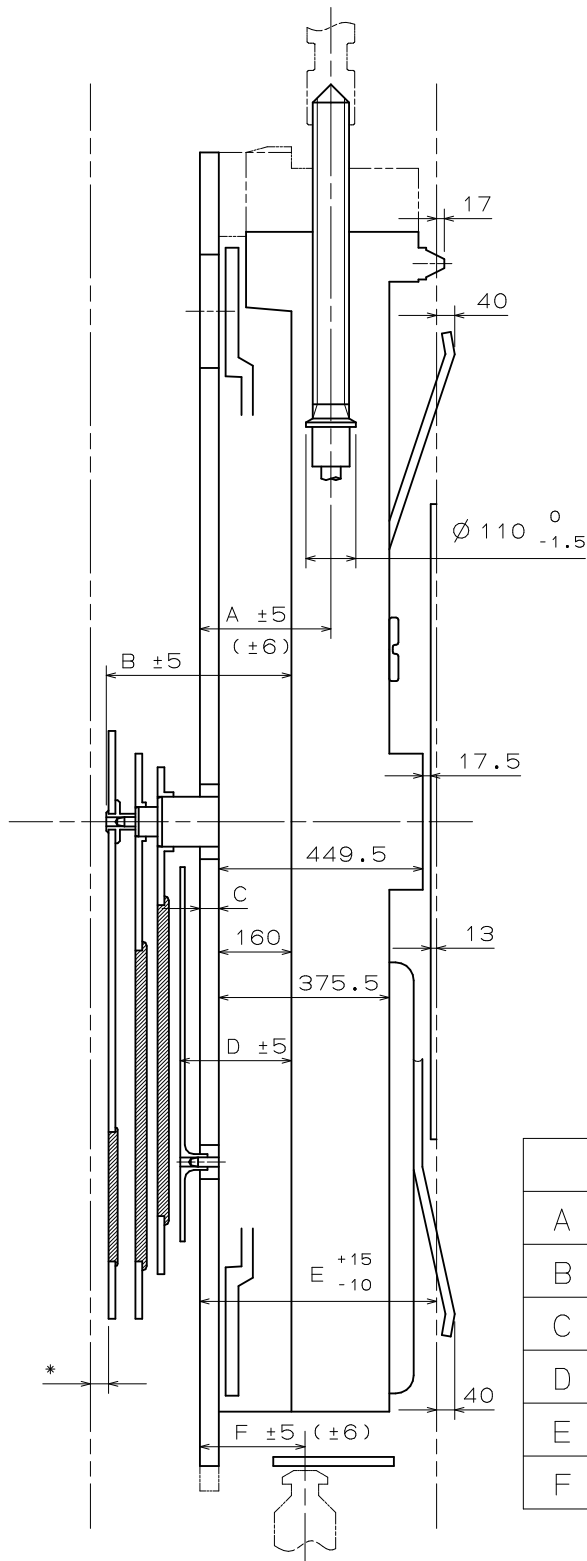
	TYPE M	TYPE L
A	40	85

Unit : 1=1/100mm

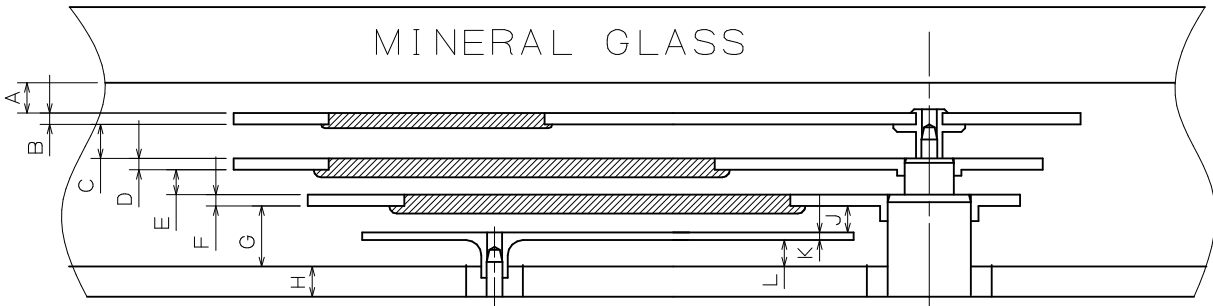
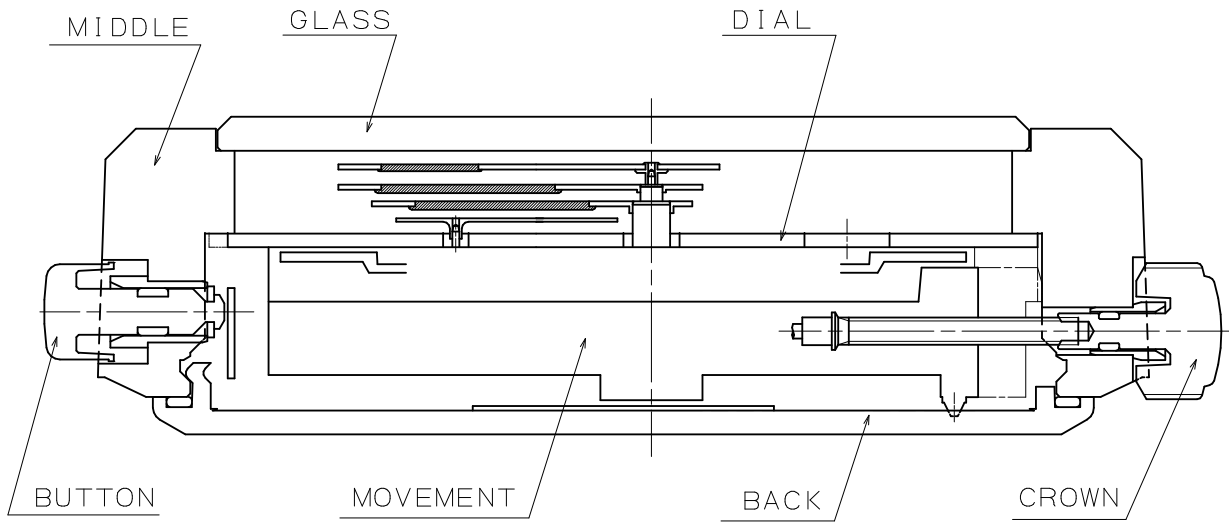
Version : 1



	TYPE M	TYPE L
A	40	85

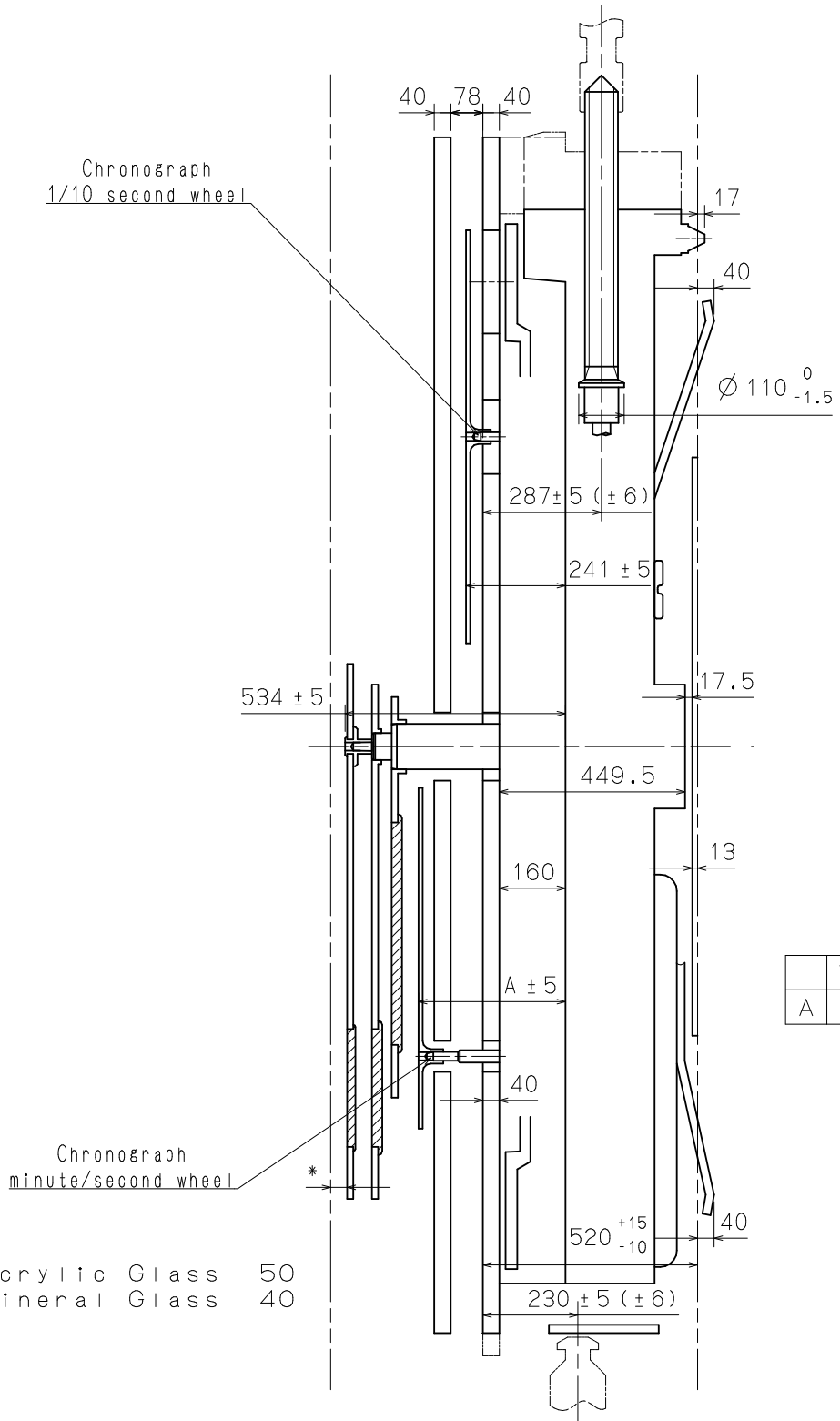


*Acrylic Glass 50
*Mineral Glass 40



	TYPE M	TYPE L
A	40	40
B	15	15
C	45	45
D	15	15
E	33	33
F	15	15
G	80	80
H	40	85
J	35	35
K	10	10
L	35	35

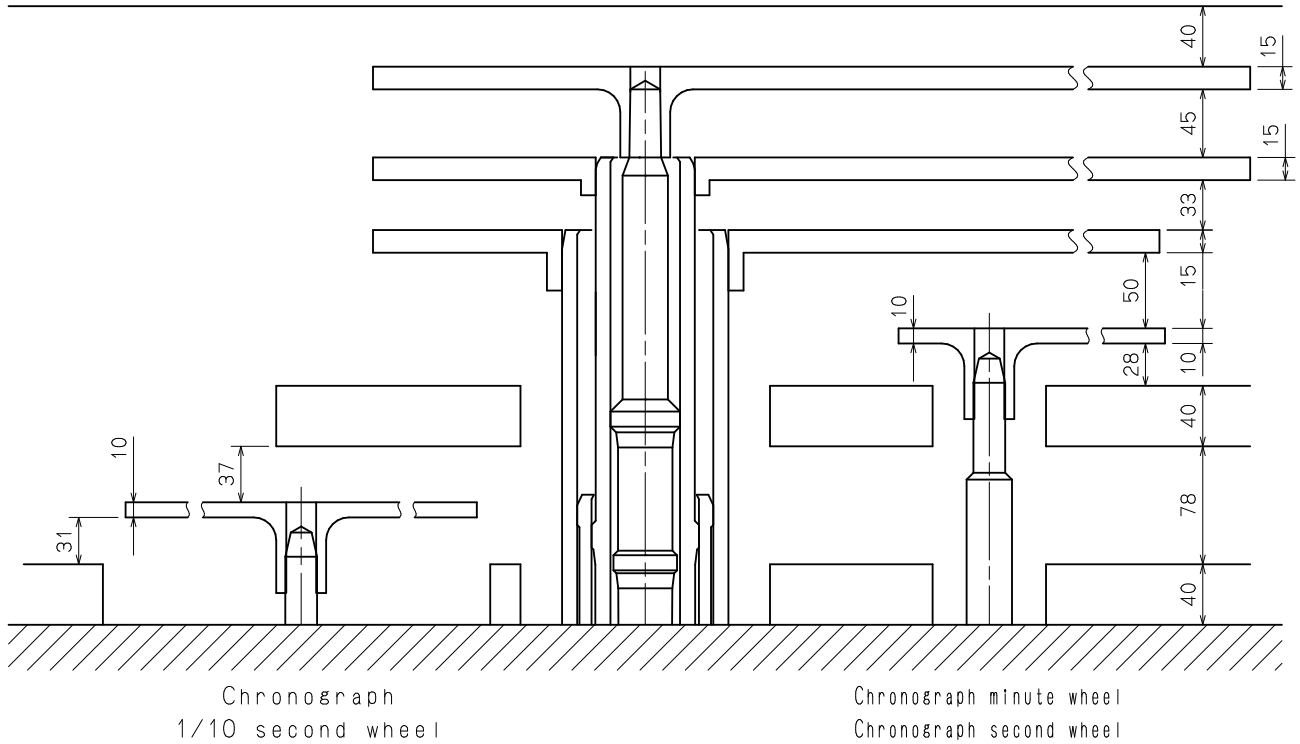
TYPE LLA/LLB



	TYPE LLA	TYPE LLB
A	356	241

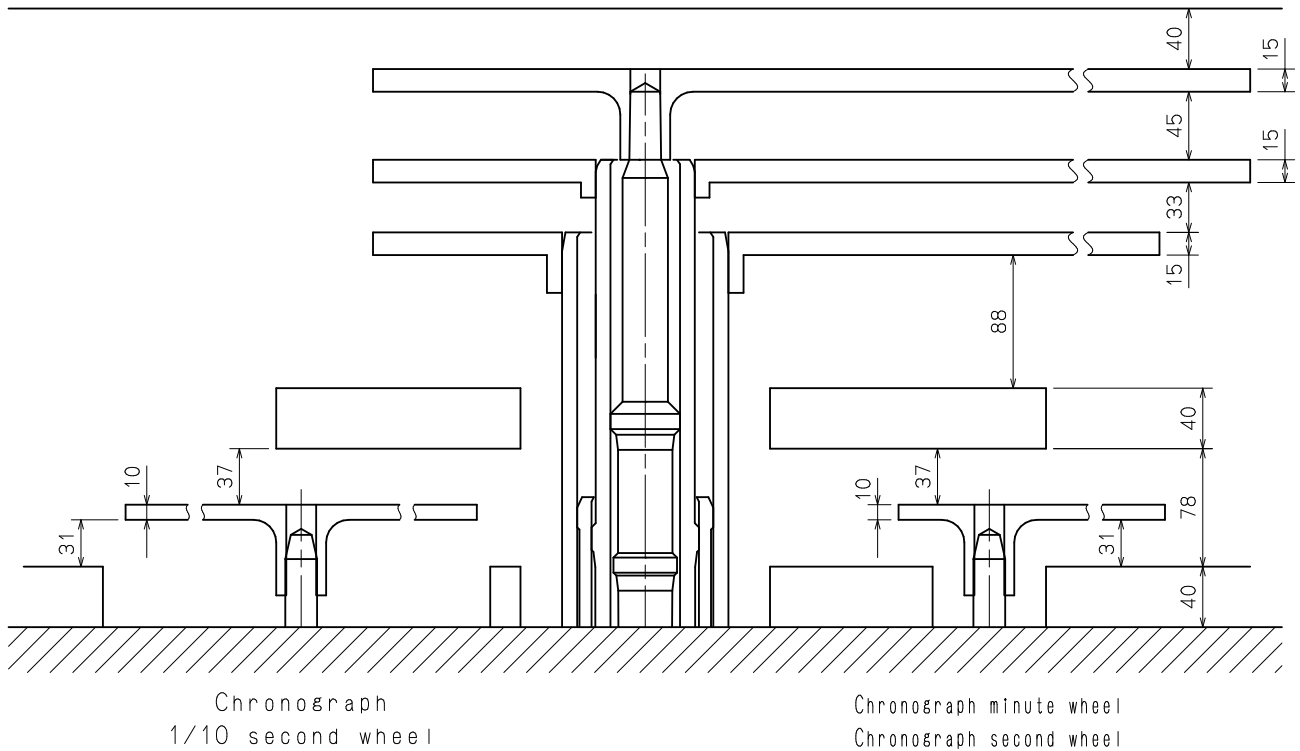
TYPE LLA

MINERAL GLASS

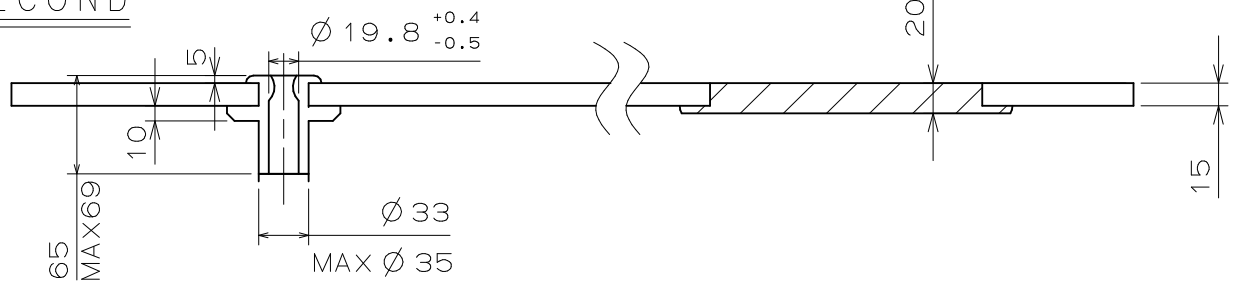


TYPE LLB

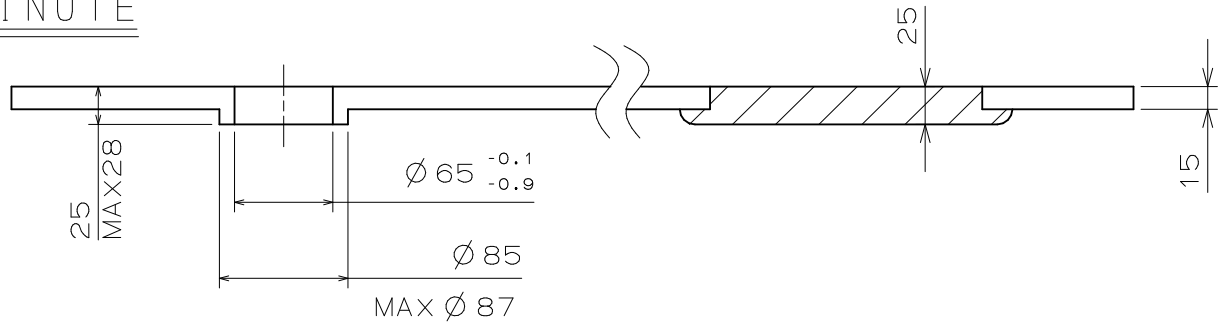
MINERAL GLASS



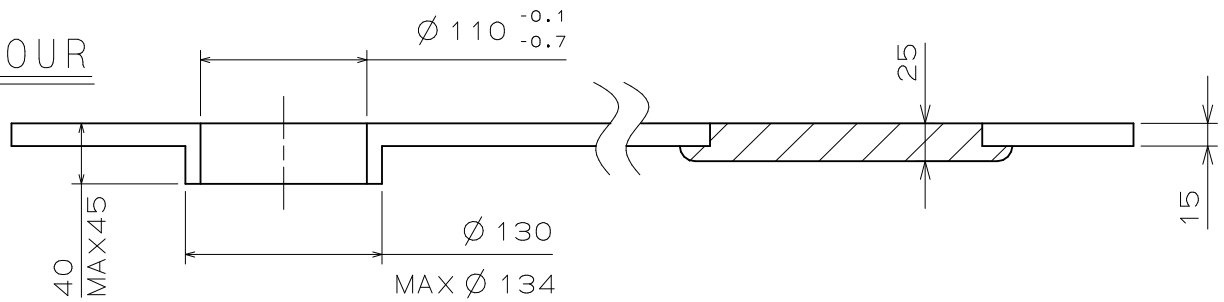
SECOND



MINUTE



HOUR



CHRONO

