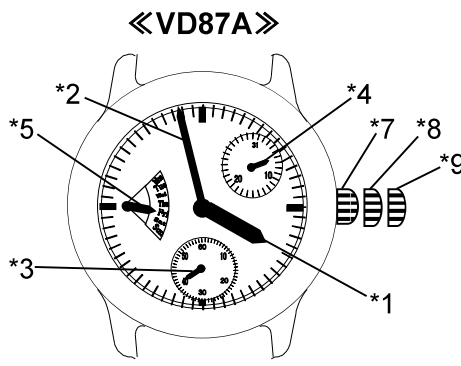
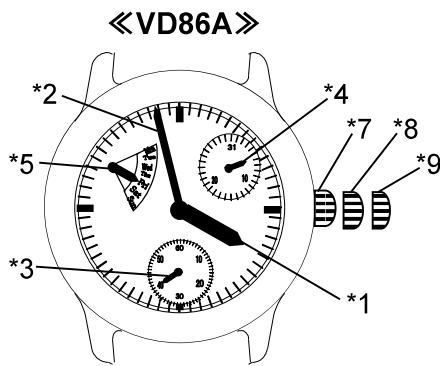
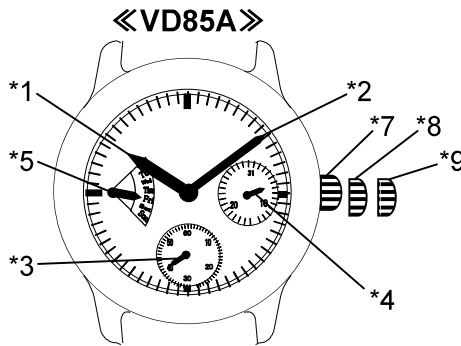
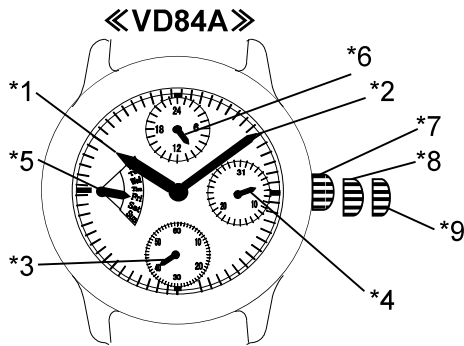
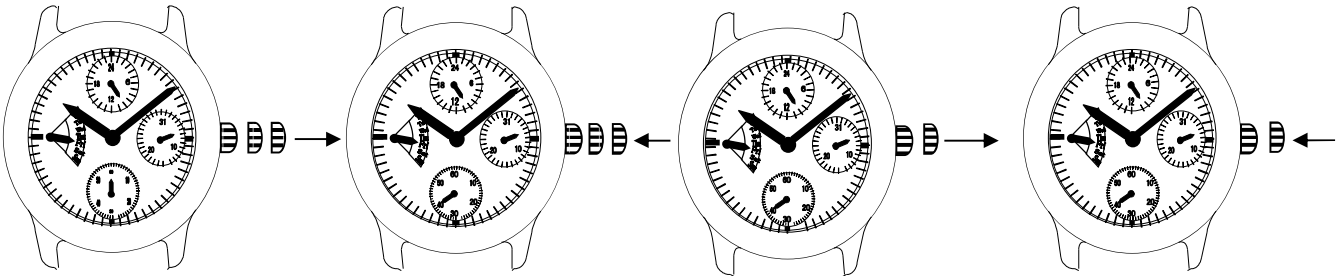


## DISPLAY AND CROWN OPERATION



Note:

- \*1: Hour hand
- \*2: Minute hand
- \*3: Small second hand
- \*4: Date calendar hand
- \*5: Day calendar hand (Retrograde)
- \*6: 24 Hour hand
- \*7: Crown at normal position
- \*8: First click
  - Date setting
  - (Quick change function)
- \*9: Second click
  - Time setting

**TIME SETTING**

1.Pull out the crown to the second click when the small second hand is at the 12 O'clock position.

Turn the crown rotation to set the day of the week.

Turn the crown to set the hour and minute hands to the time.  
(check that AM/PM is set correctly)

2.Push the crown back in to the normal position in signal.  
Pull out the crown to the first click.

3.Pull out the crown to the first click.  
turn the crown counter-clockwise to set the date.  
(Quick change function)

4.Push the crown back in to the normal position.

\*Do not set the date between 10:00 PM and 2:00 AM

Otherwise, the day may not change properly. If it is necessary to set the date during that time period, First change the time to any time outside it, set the date and then reset the correct time.