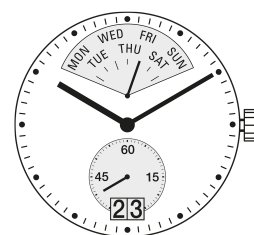
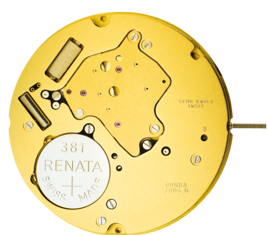


RONDA mastertech 7000

XXL Multifunctions,
Retrograde and Big Date

Caliber 7004.N – 15'''



Product Specifications

Analog quartz movement

Line mastertech

Caliber 7004.N

Size 15'''

Version Swiss Made 6 Jewels / gold plated

Standard battery life 48 months

Hand fitting height 1

Features

- Very long battery life
- Repairable metal watch movement
- Power saving mechanism with pulled out stem: Reduction of consumption approximately 70%

Functions

- Day indicator
- Big date
- Small second
- Day Retrograde
- Retrograde

Technical Specifications

Diameter Total	34.60 mm
Case fitting	33.80 mm
Movement height	5.60 mm
Height over standard battery	5.60 mm
Movement rest	0.60 mm
Height over stem	3.30 mm
Length of stem travel	1.00 mm
Stem thread	0.90 mm
Standard battery	381
Standard battery life	48 months
Battery voltage	1.5 V
Current consumption – typical	1.43 μ A (Date Mechanism not in Gear)
Current consumption – maximum	3.1 μ A (Date Mechanism not in Gear)
Useful torque second – typical	10 μ Nm
Useful torque minute – typical	500 μ Nm
Operating temperature	0 - 50 °C
Instantaneous rate	-10/ +20 sec/month
Resistance to magnetic fields	18.8 Oe
Resistance against shock	NIHS 91-10

Watch production

Drawing Casing ring (standard, PDF)
 Drawing Dial (stem 3h, day retro 12h, date 6h, PDF)
 Drawing Hand fitting (hand height 1, PDF)
 Drawing Stem
 Casing information (PDF)

User's manual

User's manual (PDF)

Watch repairs

Technical instruction up to code M (PDF)
 Technical instruction as of code N (PDF)
 Technical instruction as of code V (PDF)

