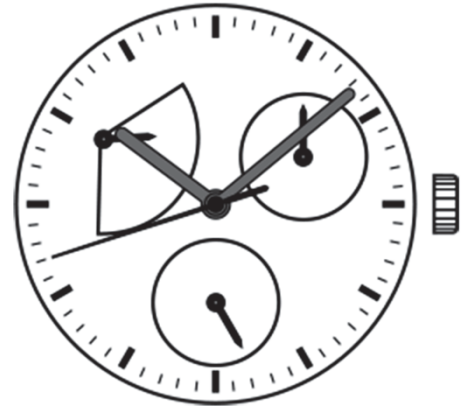


## Watch Movement Specification and Drawing

Sweep Second Multi-Eye

# VH88A



Movement Size: **10 1/2"**  
 Diameter: **Φ23.70mm**  
 Height: **3.45mm**

Items	Ver.	Items	Ver.
Specification	1		
Appearance	1		
Casing	1		
Hand Fitting	1		
Hand Setting Stem	1		
Dial	1		
Casing Ring	1		
Assembly Plan	1		
Hands	1		

## CAL.VH88A 10½ Ligne Quartz Movement

### Three Hands ( 1/4 Center Second Hand ) with 3 eyes Small 24 Hour Indicator, Date & Retrograde Day Hands

#### 1. FUNCTION

- Jewel 2 jewels
- Accuracy Less than  $\pm 15$  seconds / month (Normal temperature range)
- Battery life Approx. 2 years
- Regulation hands unbalance
  - Hour hand : Less than  $0.50 \mu\text{N}\cdot\text{m}$  ( 50 mg·mm )
  - Minute hand : Less than  $0.80 \mu\text{N}\cdot\text{m}$  ( 80 mg·mm )
  - Second hand : Less than  $0.30 \mu\text{N}\cdot\text{m}$  ( 30 mg·mm )
  - Small hands : Less than  $0.10 \mu\text{N}\cdot\text{m}$  ( 10 mg·mm )  
(Date, retrograde day & 24 hour indicator hands)
- Additional function Date & Retrograde Day display with quick date correction  
24 hour indicator (Synchronized regular hour hand)

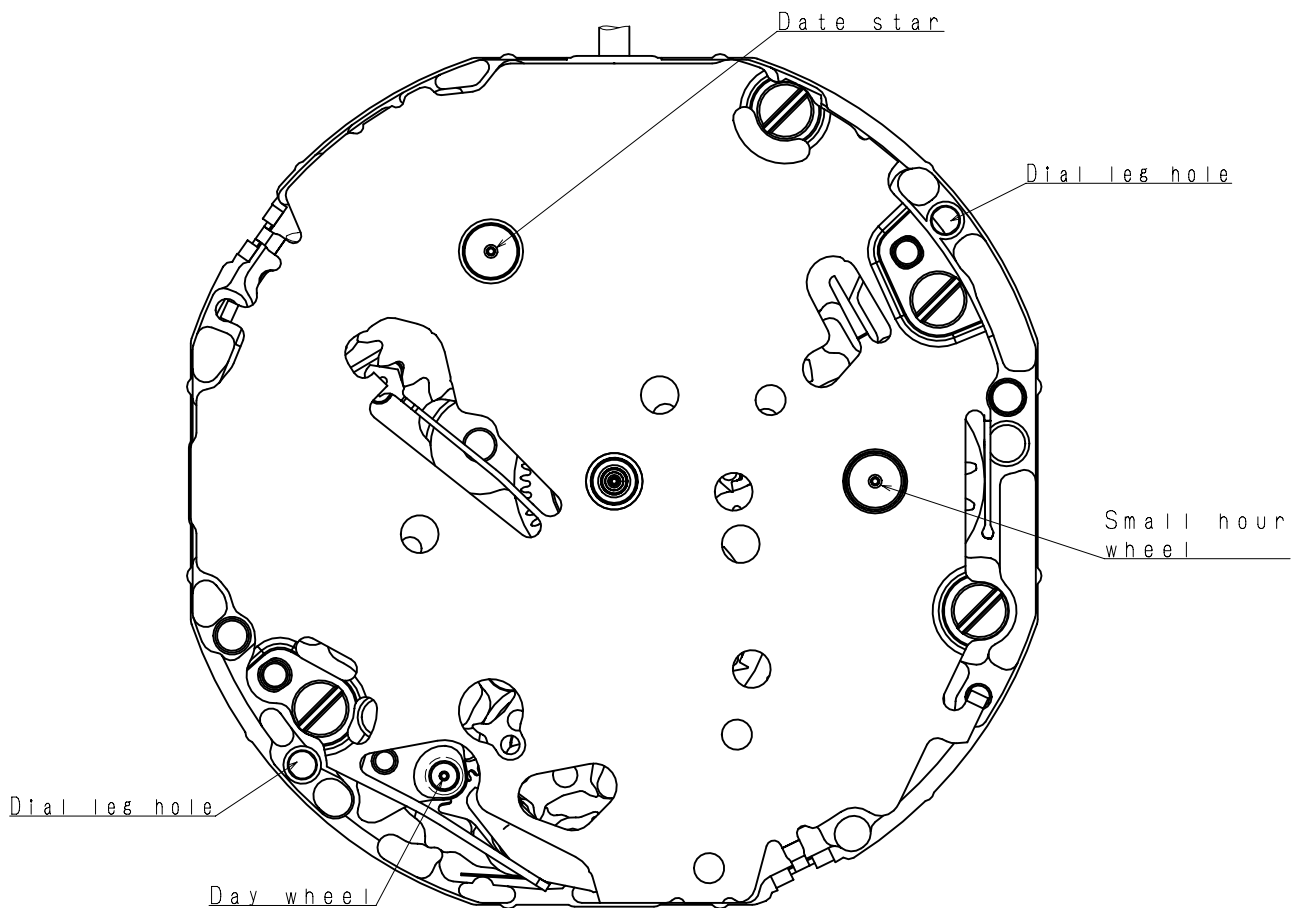
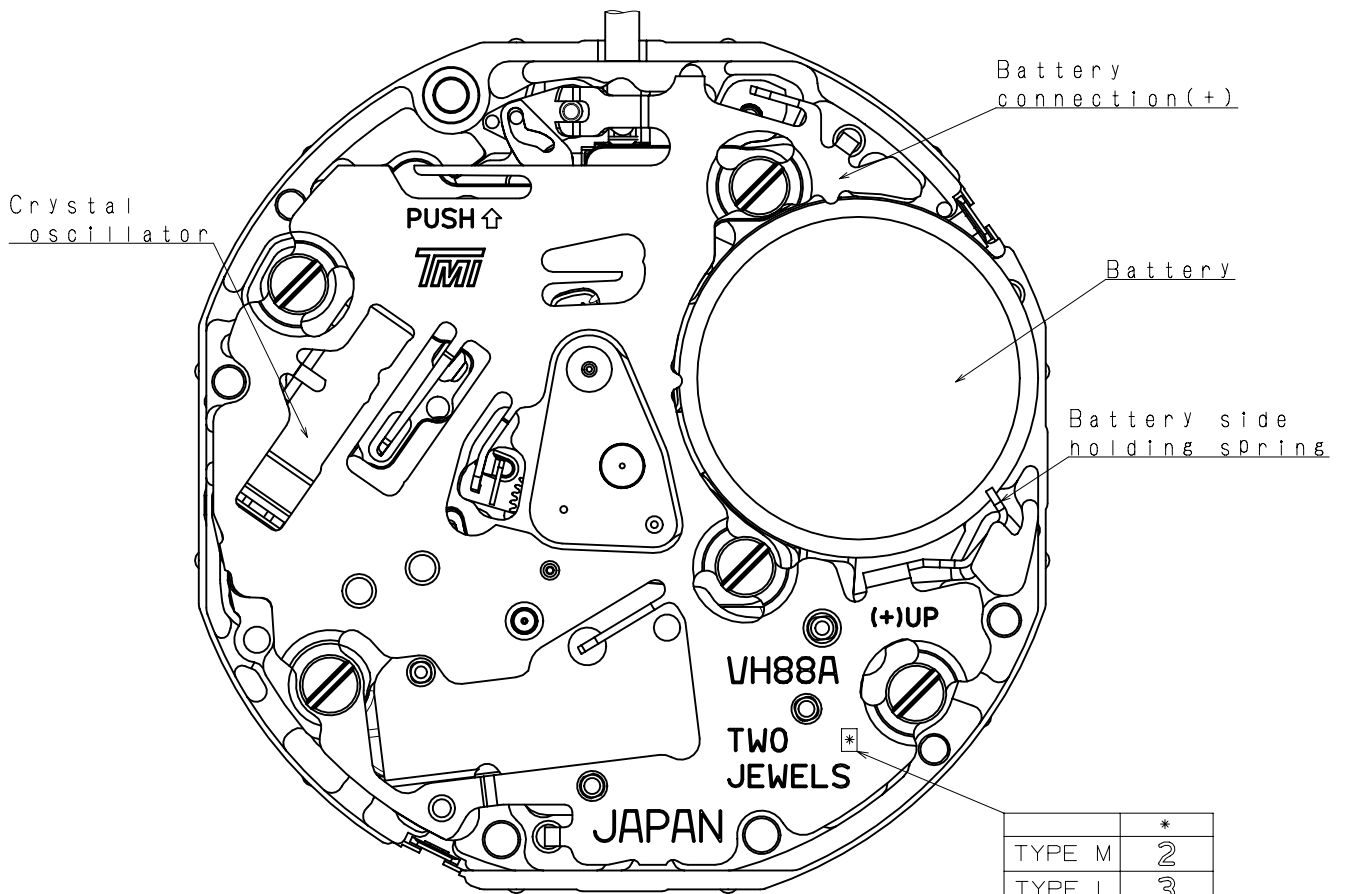
#### 2. USE AND TEST CONDITION

- Battery SR920SW (Recommended battery is SEIZAIKEN)
- Operation temperature range From  $- 5 \text{ }^{\circ}\text{C}$  to  $+ 50 \text{ }^{\circ}\text{C}$
- Antimagnetic  $\geq 1600 \text{ A / m}$  (Direct current magnetic field)
- Test of accuracy 10 seconds (Duration of measurement)

**\* All specifications are subject to change without notice.**

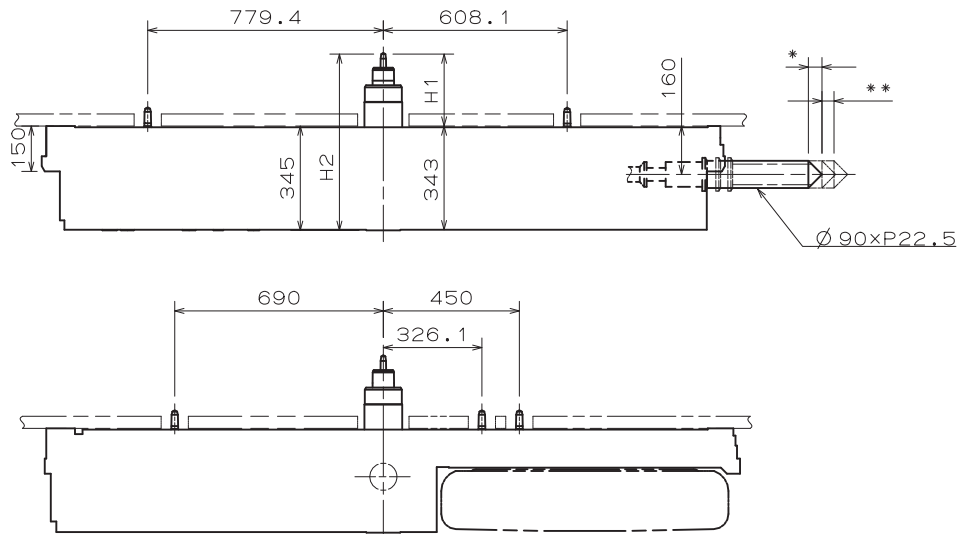
# Appearance

# VH88A



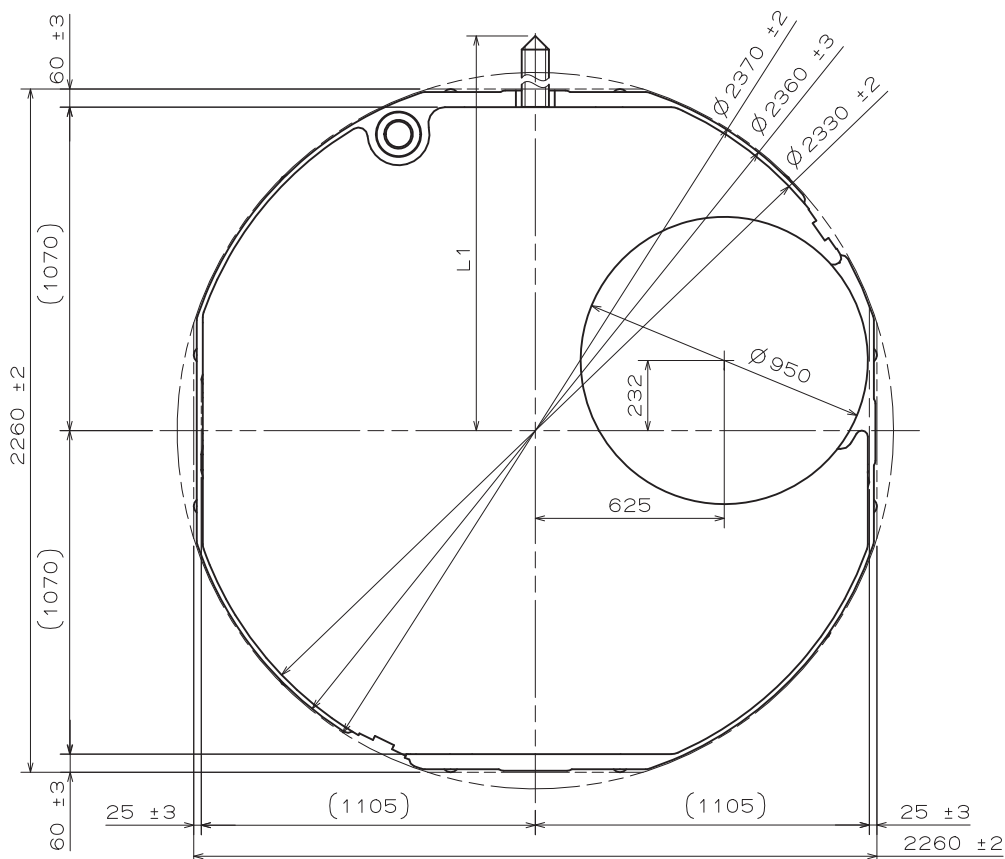
Version : 1

\* First pull out stroke 45  
 \*\* Second pull out stroke 39.8

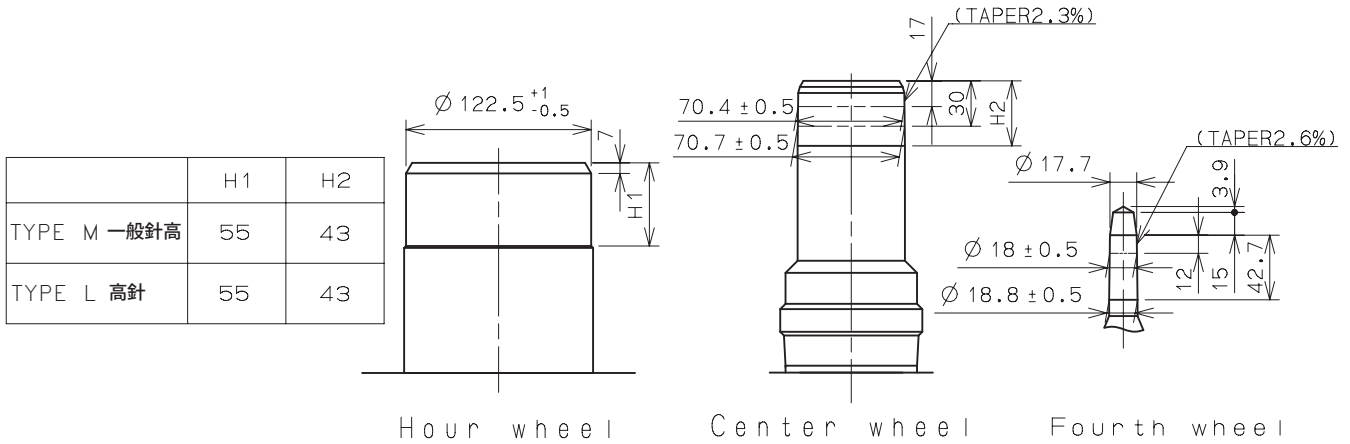


Center post	中心柱位	TYPE M 一般針高	TYPE L 高針
Maximum height from main plate surface 與機芯平面的最大高度	H1	238	293
Total height incl. movement 機芯總高度	H2	583	638

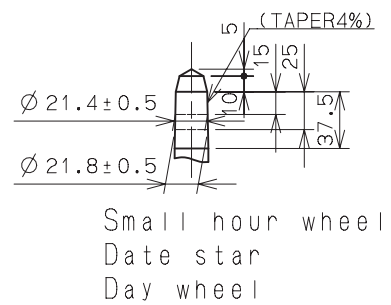
Hand Setting Stem	TYPE A	TYPE B
L1	2436	3012



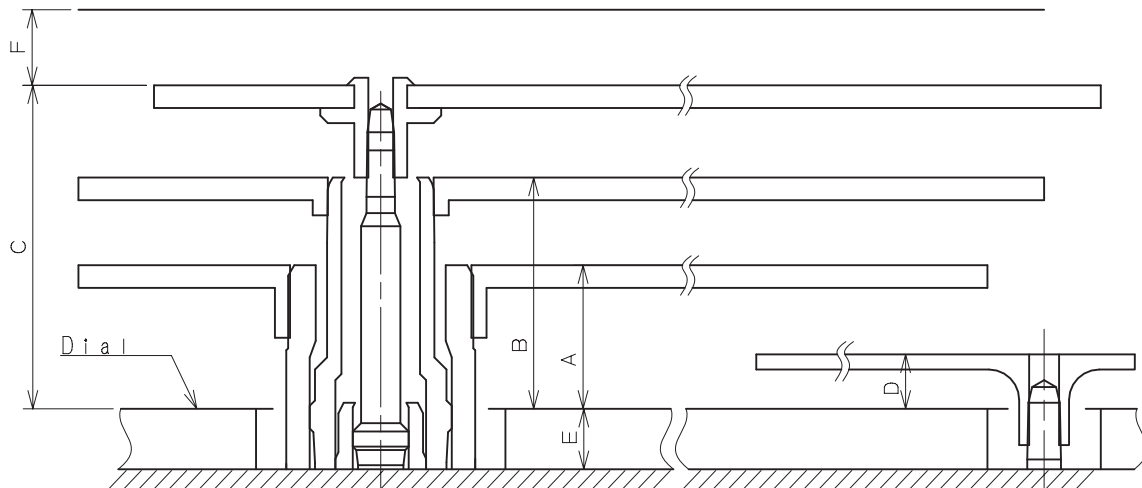
- \* Hour hand unbalance  $\leq 0.5 \mu\text{N}\cdot\text{m}$  (50mg·mm)
- \* Minute hand unbalance  $\leq 0.8 \mu\text{N}\cdot\text{m}$  (80mg·mm)
- \* Second hand unbalance  $\leq 0.3 \mu\text{N}\cdot\text{m}$  (30mg·mm)
- \* Small hour hand unbalance  $\leq 0.1 \mu\text{N}\cdot\text{m}$  (10mg·mm)
- \* Date hand unbalance  $\leq 0.1 \mu\text{N}\cdot\text{m}$  (10mg·mm)
- \* Day hand unbalance  $\leq 0.1 \mu\text{N}\cdot\text{m}$  (10mg·mm)



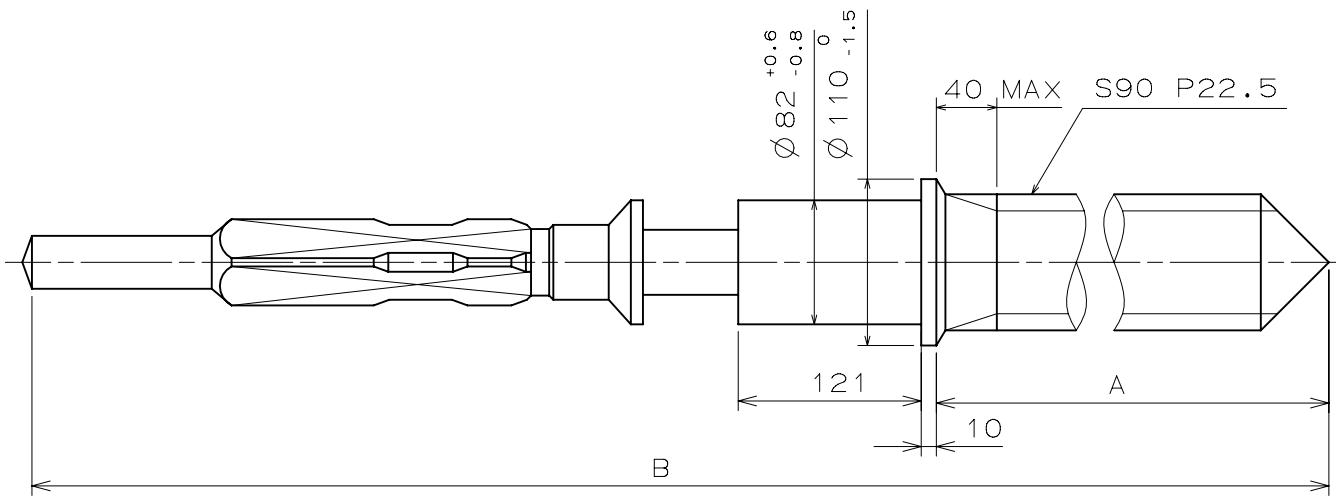
Part name	Part No.	
	TYPE M 一般針高	TYPE L 高針
Hour wheel 時針輪	0273 043	0273 045
Center wheel 分針輪	0221 089	0221 093
Fourth wheel 秒針輪	0144 004	0144 005
Date star 日曆針輪	0970 004	0970 005
Small hour wheel 小時針輪	0157 018	0157 019
Day wheel 星期針輪	1019 012	1019 013



### Mineral glass

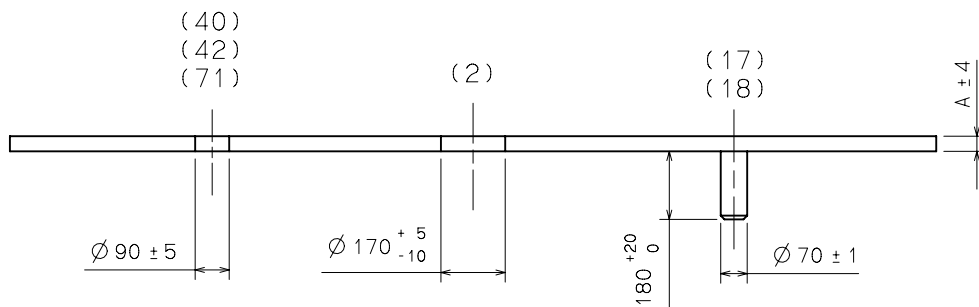
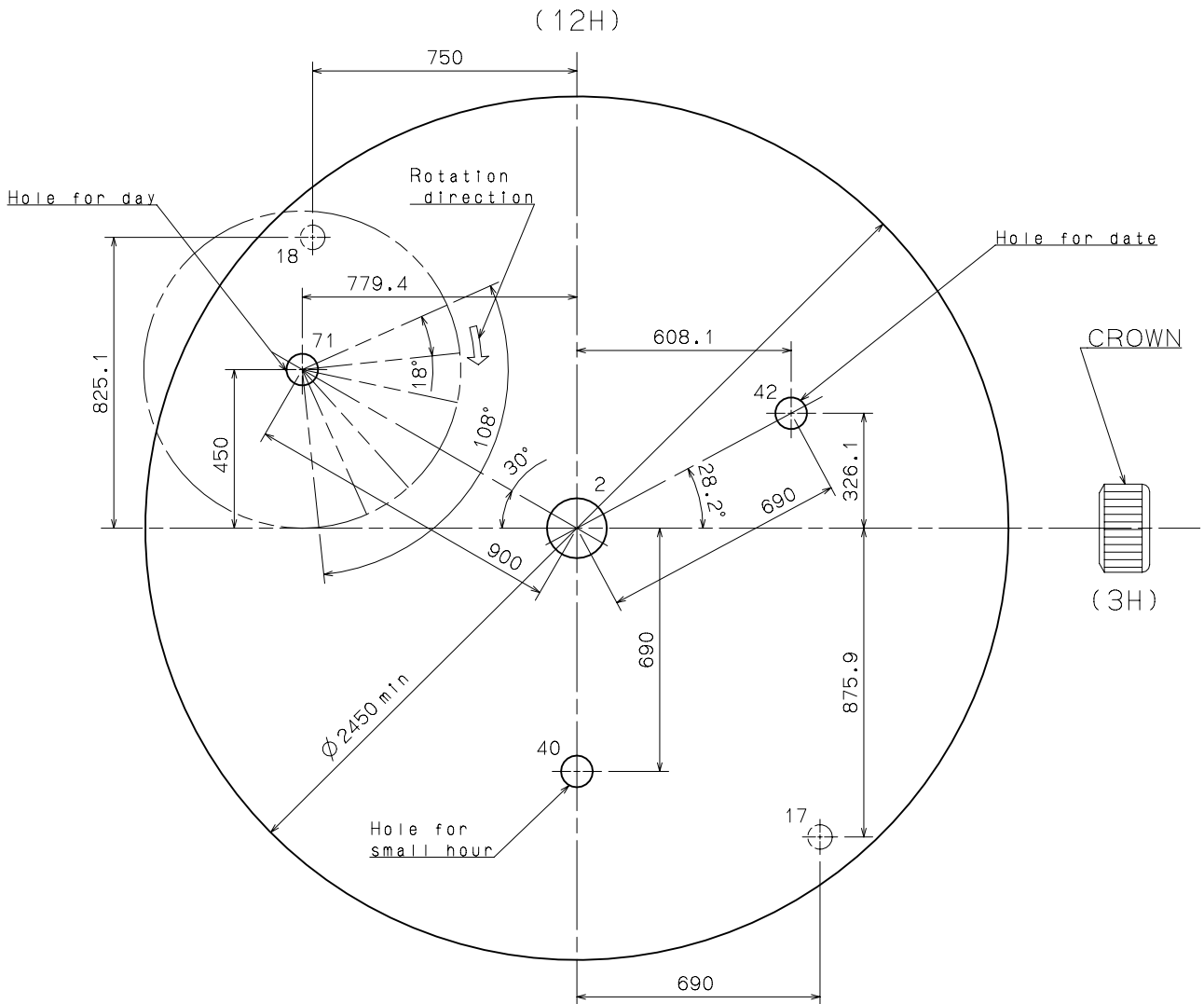


	A	B	C	D	E	F
TYPE M 一般針高	95	153	214	36	40	50
TYPE L 高針	105	163	224	46	85	50



	Part No.	A	B
TYPE A	0351 177	1371	1969
TYPE B	0351 122	1947	2545

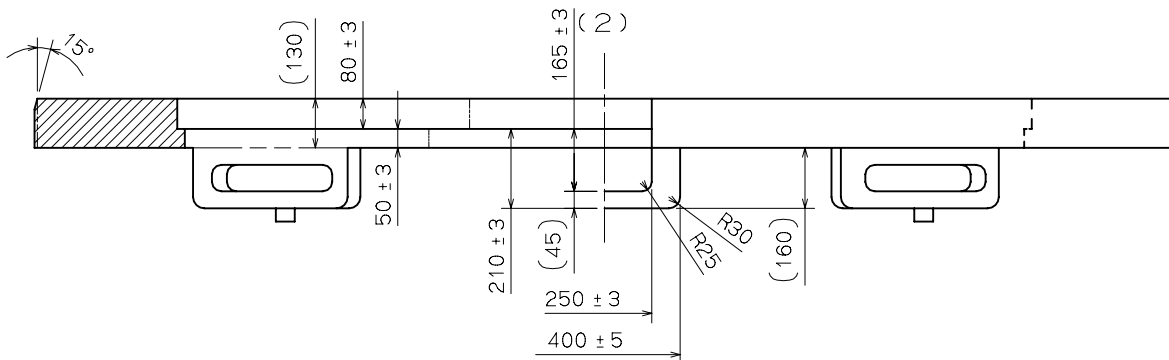
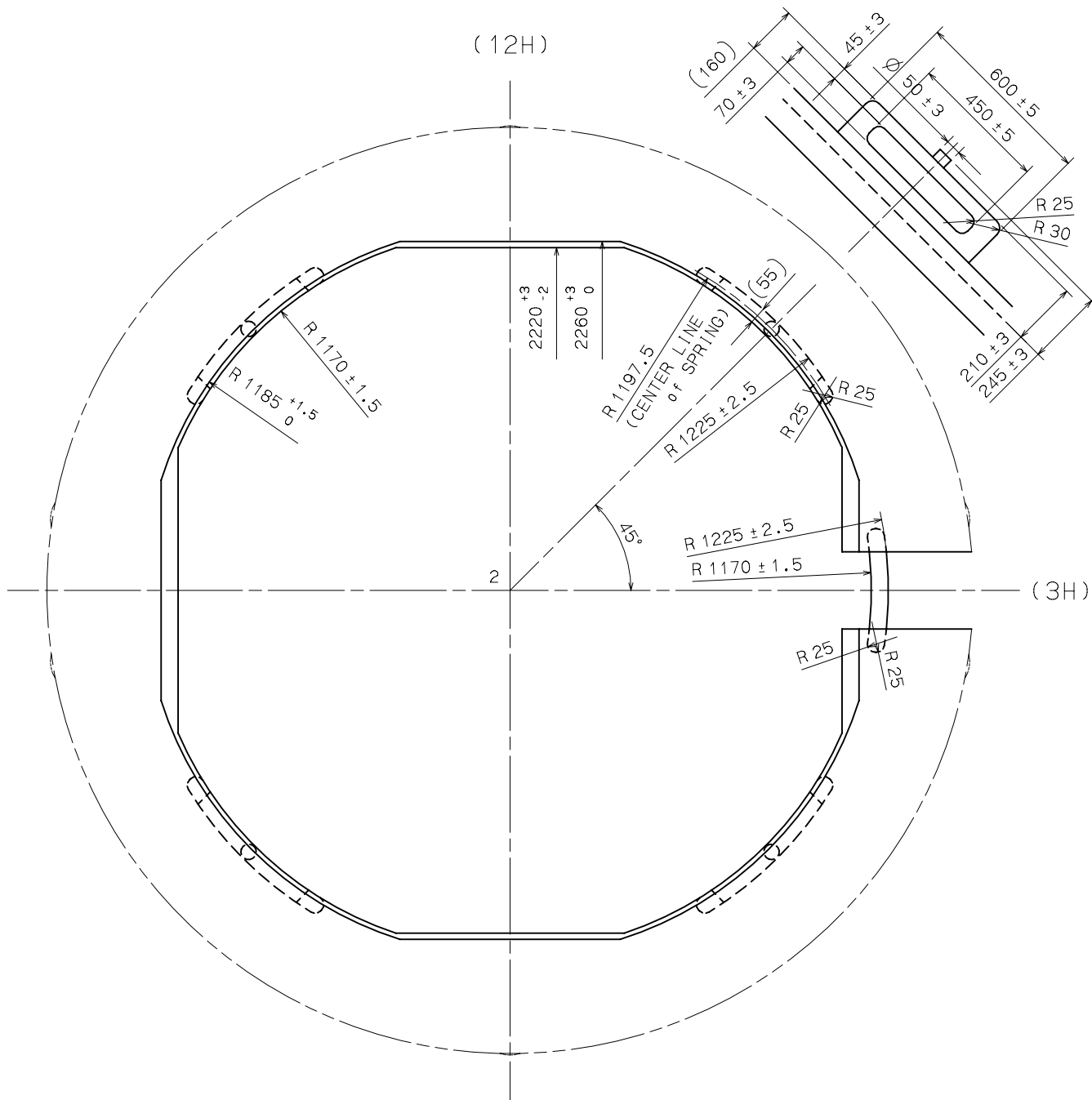
Operating area of DAY HAND  
 Total: 108°  
 1 step: 18°



	TYPE M	TYPE L
A	40	85

# Casing Ring

VH88A



SECTIONAL VIEW of 12H DIRECTION

SIDE VIEW from 3H DIRECTION

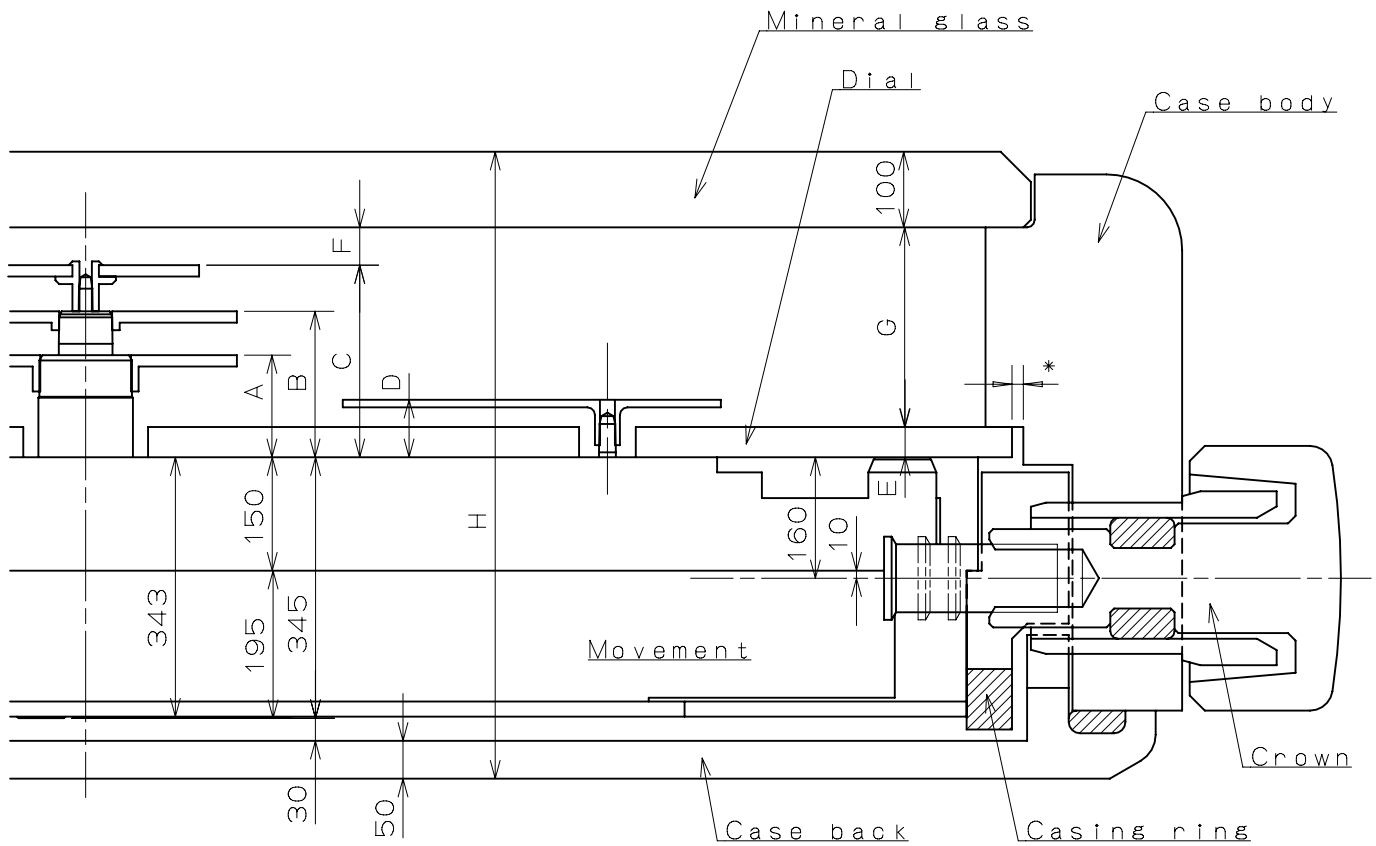
Unit : 1=1/100mm

Version : 1



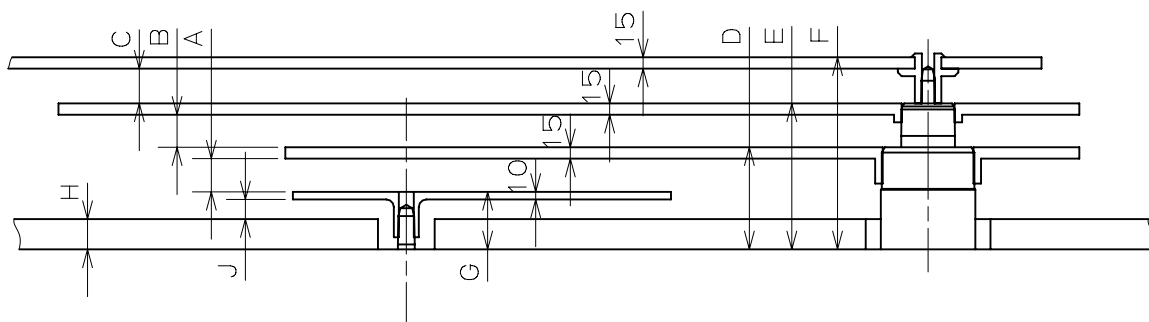
# Assembly Plan

# VH88A



	A	B	C	D	E	F	G	H
TYPE M	135	193	254	76	40	50	264	829
TYPE L	190	248	309	131	85	50	274	884

\*Recommended Dimension(Clearance of Dial and Case Body):15

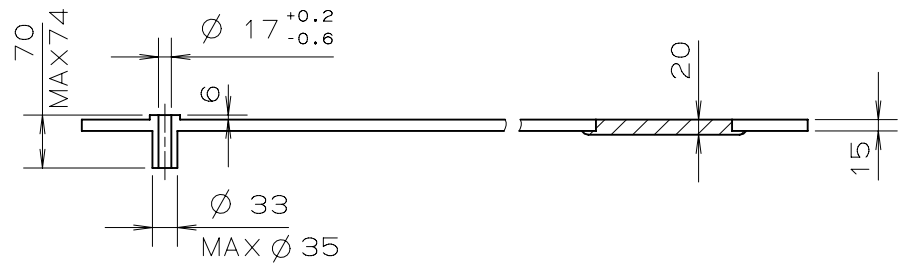


	A	B	C	D	E	F	G	H	J
TYPE M	44	43	46	135	193	254	76	40	26
TYPE L	44	43	46	190	248	309	131	85	36

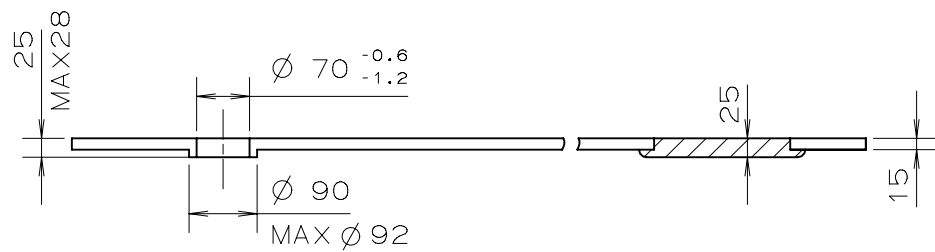
Unit : 1=1/100mm

Version : 1

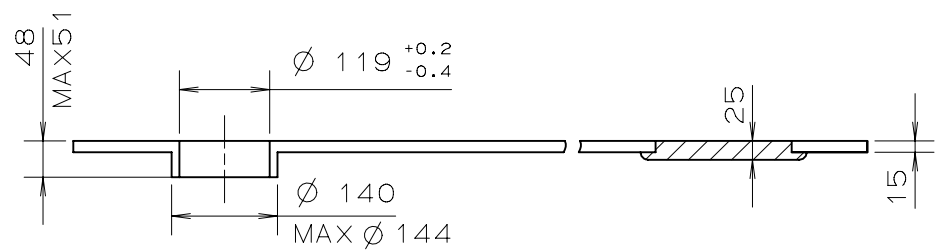
SECOND



MINUTE



HOUR



SMALL HOUR

DAY

DATE

