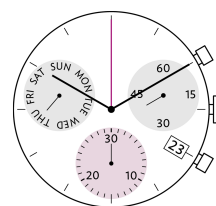
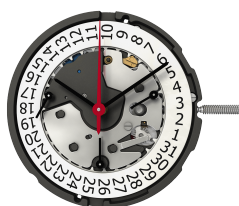


# RONDA xtratech Z Series

13¼" Chronos with 2 & 3 eyes

*Caliber Z60 – 13¼"*



## Product Specifications

Analog quartz movement

Line xtratech

Caliber Z60

Size 13¼"

Version Swiss Made 0 Jewels / nickel plated  
Swiss Parts 0 Jewels / nickel plated

Standard battery life 50 months

Hand fitting height 1

## Features

- Very long battery life
- Repairable movement with metal main plate and bridges
- Power saving mechanism with pulled out stem: Reduction of consumption approximately 70%
- Very easy handling by two pushers

## Functions

- Chronograph
- Center stop second (1/1 sec)
- 30 minute counter
- ADD and SPLIT functions
- 3 eyes
- Day indicator
- Small second
- Date

## Technical Specifications

Diameter Total	30.60 mm
Case fitting	30.00 mm
Movement height	4.60 mm
Height over standard battery	4.60 mm
Movement rest	1.37 mm
Height over stem	1.75 mm
Length of stem travel	1.00 mm
Stem thread	0.90 mm
Standard battery	395
Standard battery life	50 months
Battery voltage	1.5 V
Current consumption – typical	1.42 µA (Date Mechanism not in Gear)
Current consumption – maximum	3 µA (Date Mechanism not in Gear)
Useful torque second – typical	6 µNm
Useful torque minute – typical	300 µNm
Useful torque center stop second – typical	6 µNm
Operating temperature	0 - 50 °C
Instantaneous rate	-10/+20 sec/month
Resistance to magnetic fields	18.8 Oe
Resistance against shock	NIHS 91-10

## Watch production

- Drawing Casing ring (standard, PDF)
- Drawing Dial (stem 3h, calendar 4h, PDF)
- Drawing Dial (stem 3h, calendar 4h - 6h - 8h, large date, PDF)
- Drawing Dial (stem 3h, calendar 12h, large date, PDF)
- Drawing Hand fitting (Zeigerwerkhöhe 1, PDF)
- Drawing Stem
- Casing information (PDF)

## User's manual

- User's manual (PDF)

