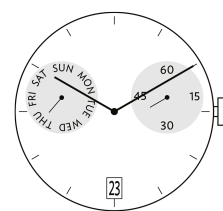


RONDA xtratech X Series

13¼''' Multifunction

Caliber X20 – 13¼'''



Product Specifications

Analog quartz movement

Line xtratech

Caliber X20

Size 13¼'''

Version Swiss Made 0 Jewels / nickel plated
Swiss Parts 0 Jewels / nickel plated

Standard battery life 60 months

Hand fitting height 1

Features

- Repairable metal watch movement
- Power saving mechanism with pulled out stem: Reduction of consumption approximately 70%

Functions

- Multifunction
- 2 eyes
- Small second
- 2 hands
- Date
- Day

Technical Specifications

Diameter Total	30.60 mm
Case fitting	30.00 mm
Movement height	4.60 mm
Height over standard battery	4.60 mm
Movement rest	1.37 mm
Height over stem	1.75 mm
Length of stem travel	1.00 mm
Stem thread	0.90 mm
Standard battery	395
Standard battery life	60 months
Battery voltage	1.5 V
Current consumption – typical	1.42 µA (Date Mechanism not in Gear)
Current consumption – maximum	3 µA (Date Mechanism not in Gear)
Useful torque second – typical	6 µNm
Useful torque minute – typical	300 µNm
Operating temperature	0 - 50 °C
Instantaneous rate	-10 / +20 sec/month
Resistance to magnetic fields	18.8 Oe
Resistance against shock	NIHS 91-10

Watch production

Drawing Casing ring (standard, PDF)
 Drawing Dial (stem 3h, calendar 6h, PDF)
 Drawing Hand fitting (hand height 1, PDF)
 Drawing Stem
 Casing information (PDF)

User's manual

User's manual (PDF)

