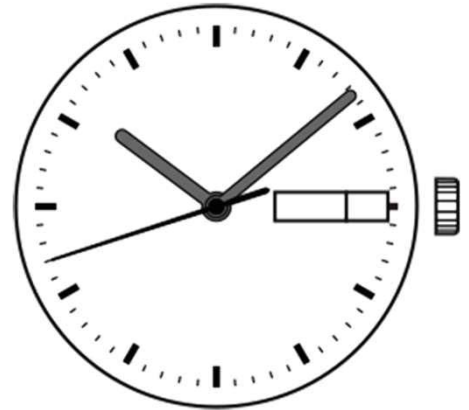


Watch Movement Specification and Drawing

Basic Mechanical Movement

NH06B



Movement Size: **7 3/4"**

Diameter: **Φ17.50mm** (Φ19.80mm with Dial support)

Height: **5.92mm** (with Dial support)

Items	Ver.	Items	Ver.
Specification	1		
Appearance - 1	1		
Appearance - 2	1		
Casing	1		
Hand Fitting	1		
Hand Setting Stem	1		
Dial - 1	1		
Dial - 2	1		
Casing Ring	1		
Assembly Plan	1		
Hands	1		

CAL.NH06B 7³/₄ Ligne Mechanical Movement

Three Hands with Day & Date

1. FUNCTION

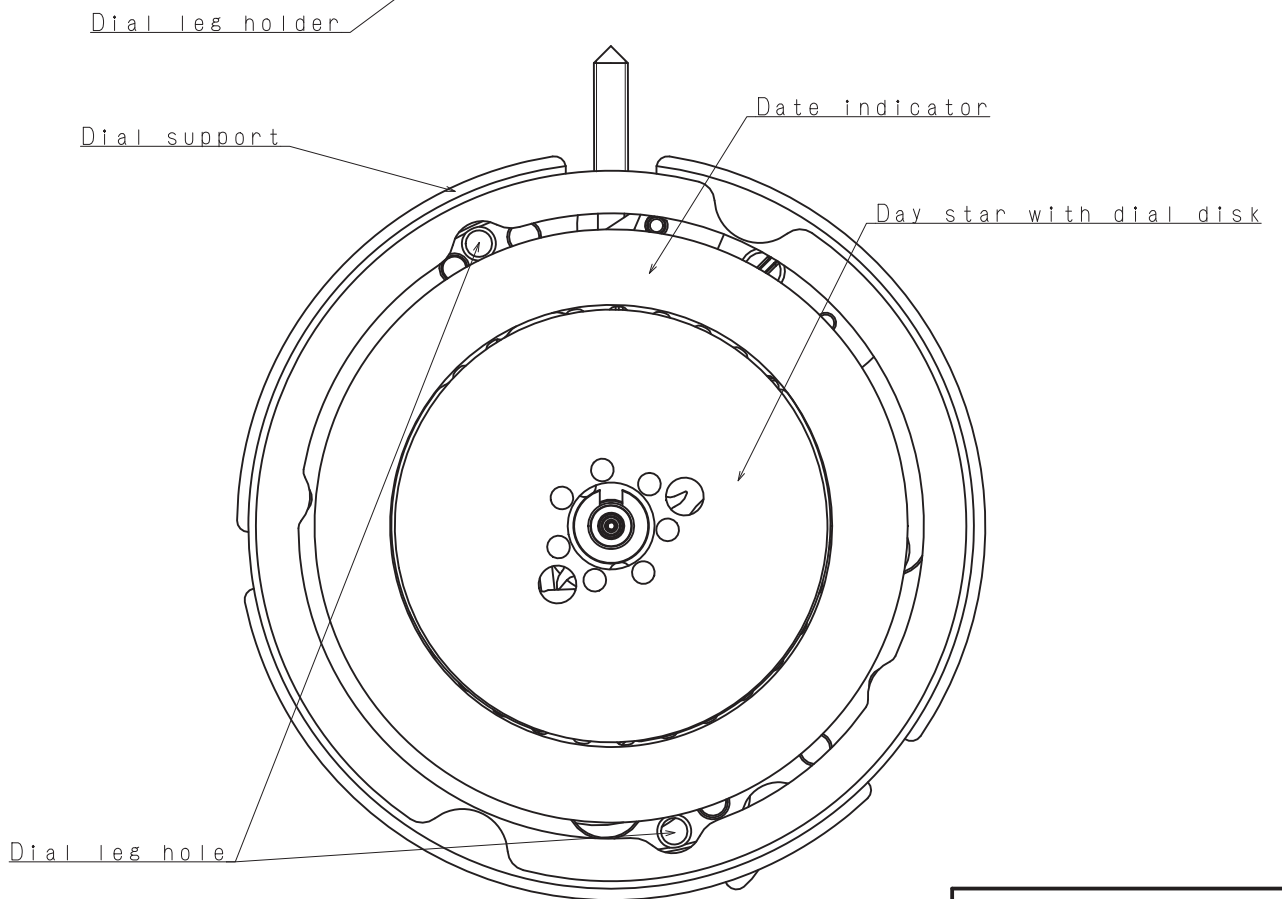
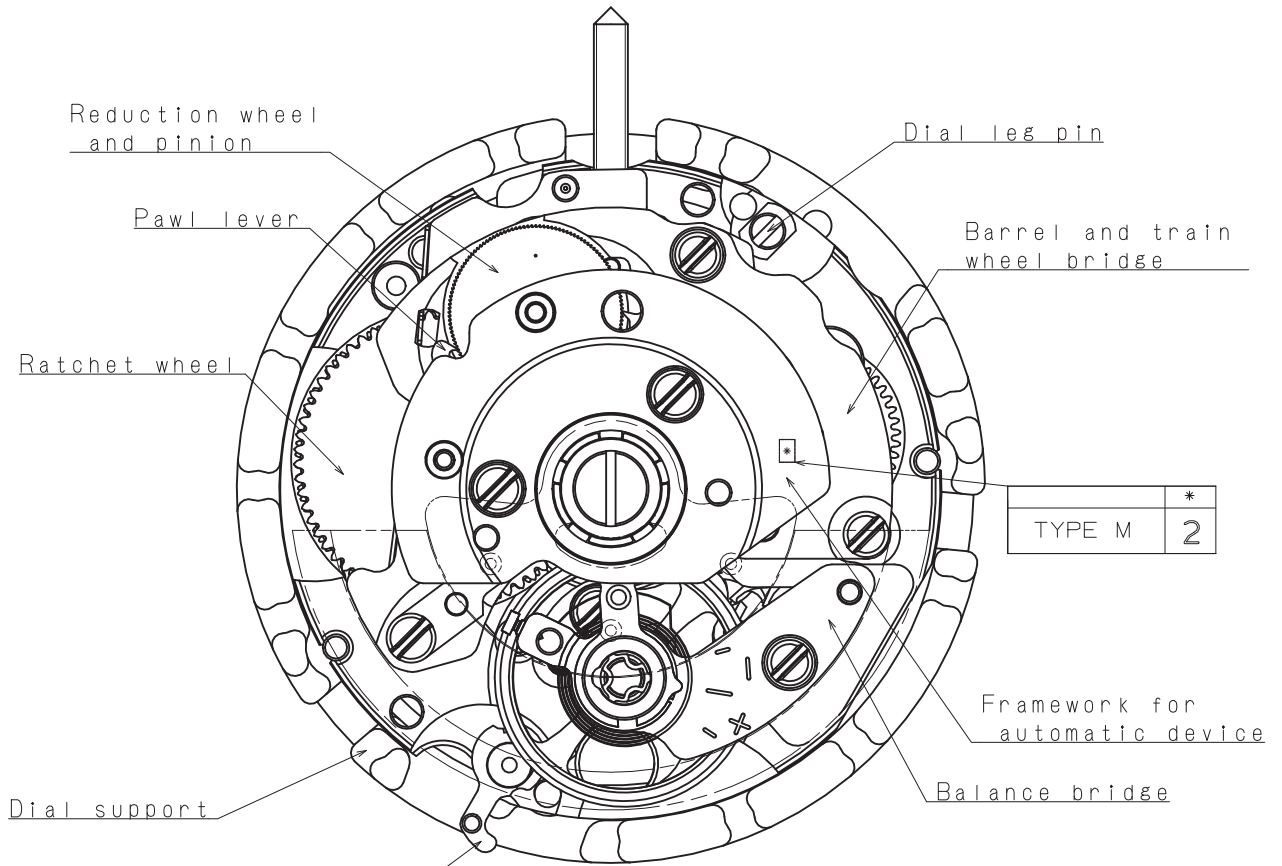
- Jewel 21 jewels
- Accuracy -35 ~ +55 seconds / day (23 ± 2 °C)
- Regulation hands unbalance
 - Hour hand : Less than 1.00 μN·m (100 mg·mm)
 - Minute hand : Less than 0.75 μN·m (75 mg·mm)
 - Second hand : Less than 0.11 μN·m (11 mg·mm)

- Additional function
 - Manual winding
 - Automatic winding with ball bearing
 - Both winding with one way clutch
 - Day & Date display with quick day & date correction

2. USE AND TEST CONDITION

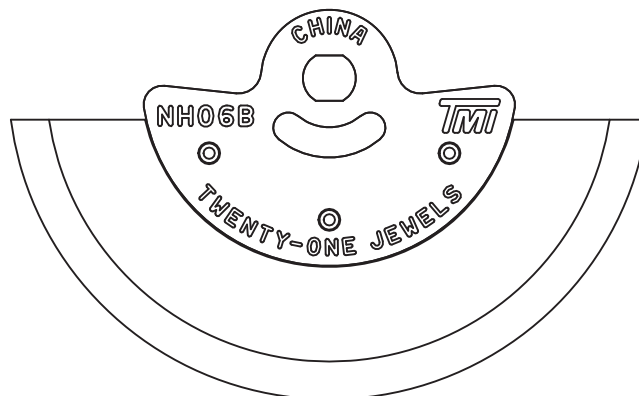
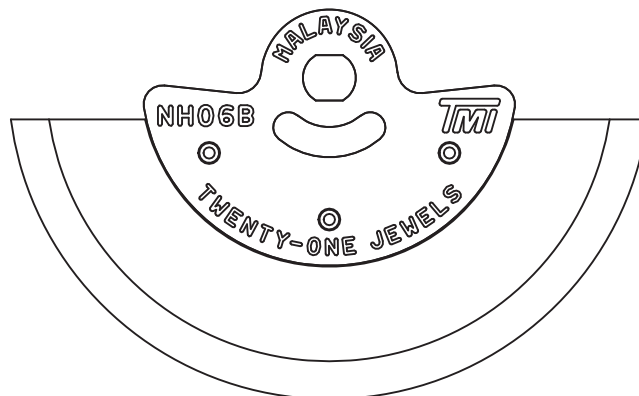
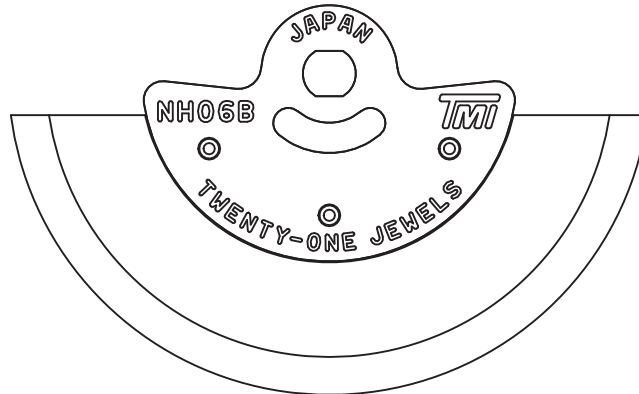
- Vibration frequency 21,600 vibrations per hour
- Duration time More than 40 hours
- Antimagnetic ≥ 4800 A / m (Direct current magnetic field)
- Test of accuracy 20 seconds (Duration of measurement)
- Casing Non-corresponding with Diver's watch

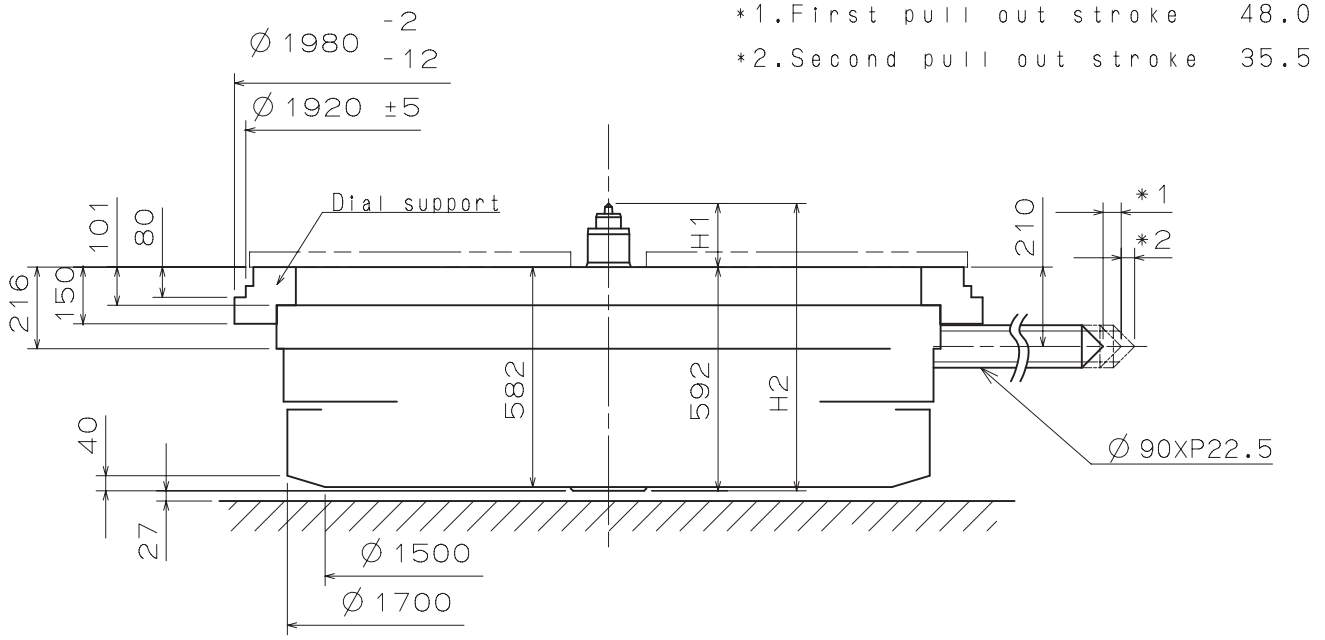
*** All specifications are subject to change without notice.**



Oscillating weight

Marking	Country of origin
JAPAN	JAPAN
MALAYSIA	MALAYSIA
CHINA	CHINA

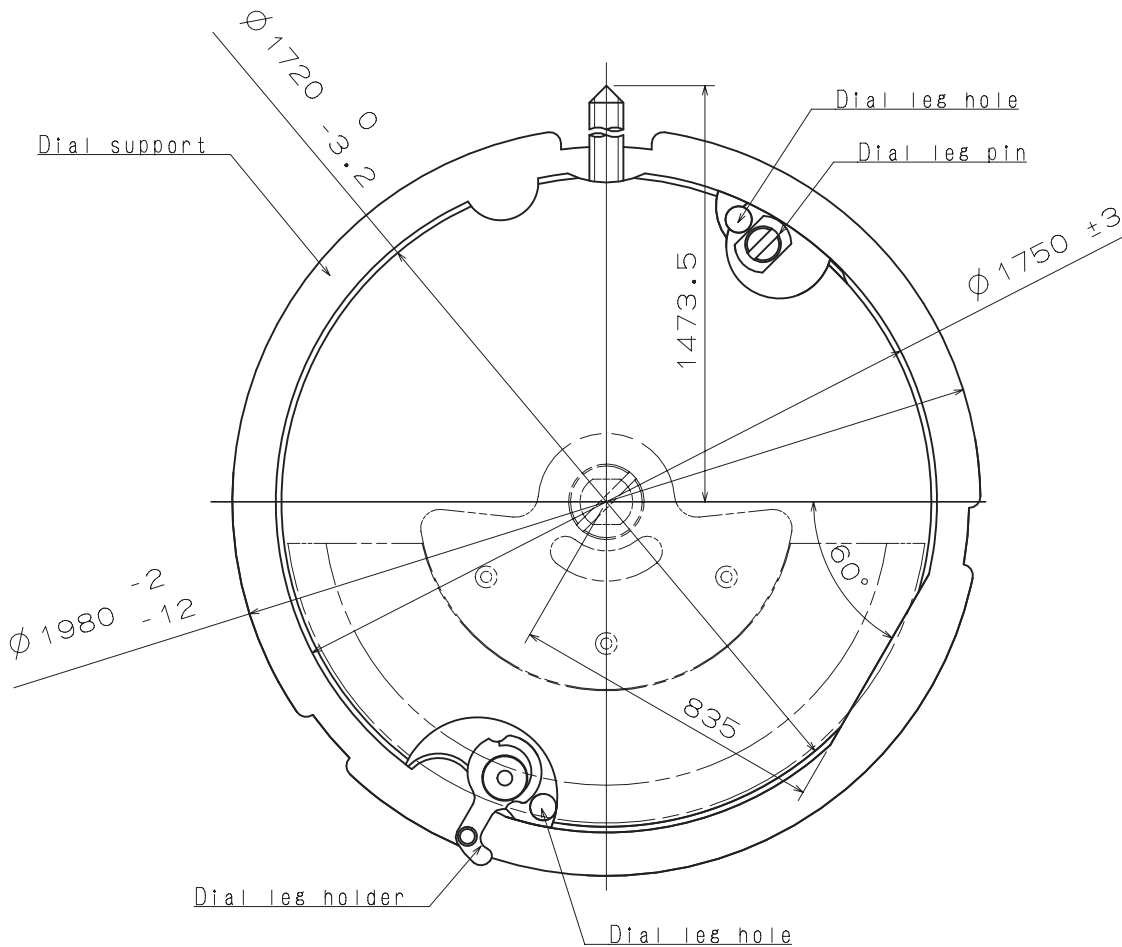




*1. First pull out stroke 48.0

*2. Second pull out stroke 35.5

Center post 中心柱位		TYPE M 一般針高
Maximum height from main plate surface 與機芯平面的最大高度	H1	168.4
Total height incl. movement 機芯總高度	H2	760.4

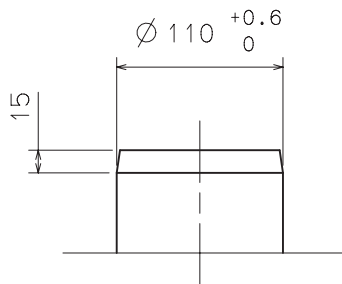


Unit : 1=1/100mm

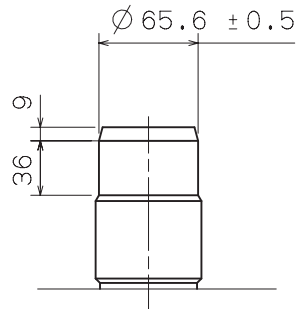
Version : 1

Hour hand unbalance $\leq 1.00\mu\text{N}\cdot\text{m}$ (100mg·mm)
 Minute hand unbalance $\leq 0.75\mu\text{N}\cdot\text{m}$ (75mg·mm)
 Second hand unbalance $\leq 0.11\mu\text{N}\cdot\text{m}$ (11mg·mm)

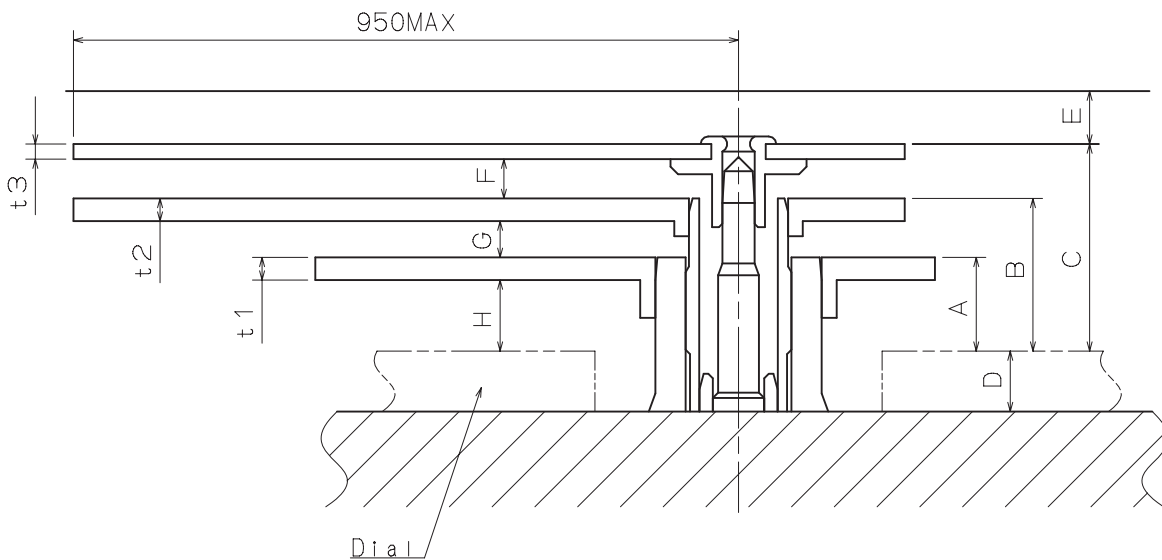
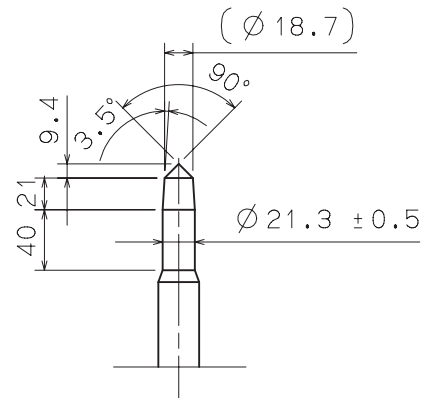
HOUR HAND FITTING
 Hour wheel 時針輪 : 0271 425



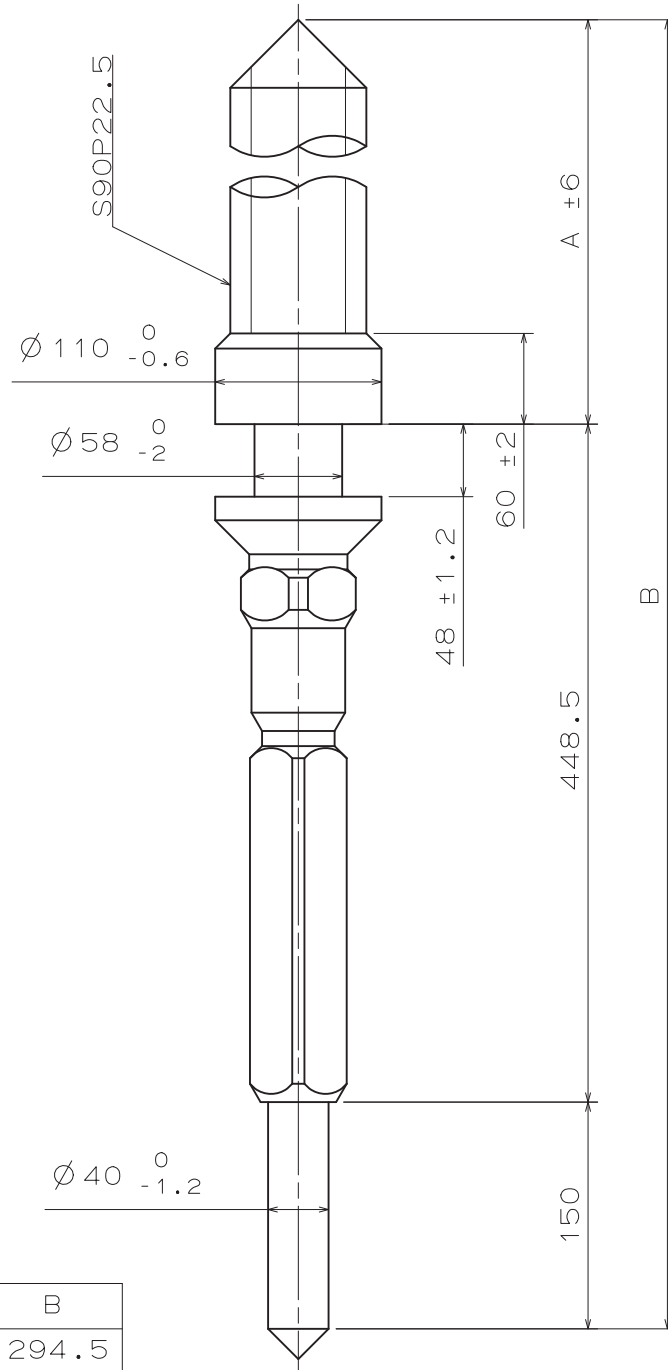
MINUTE HAND FITTING
 Cannon pinion 分針輪(十反) : 0225 422



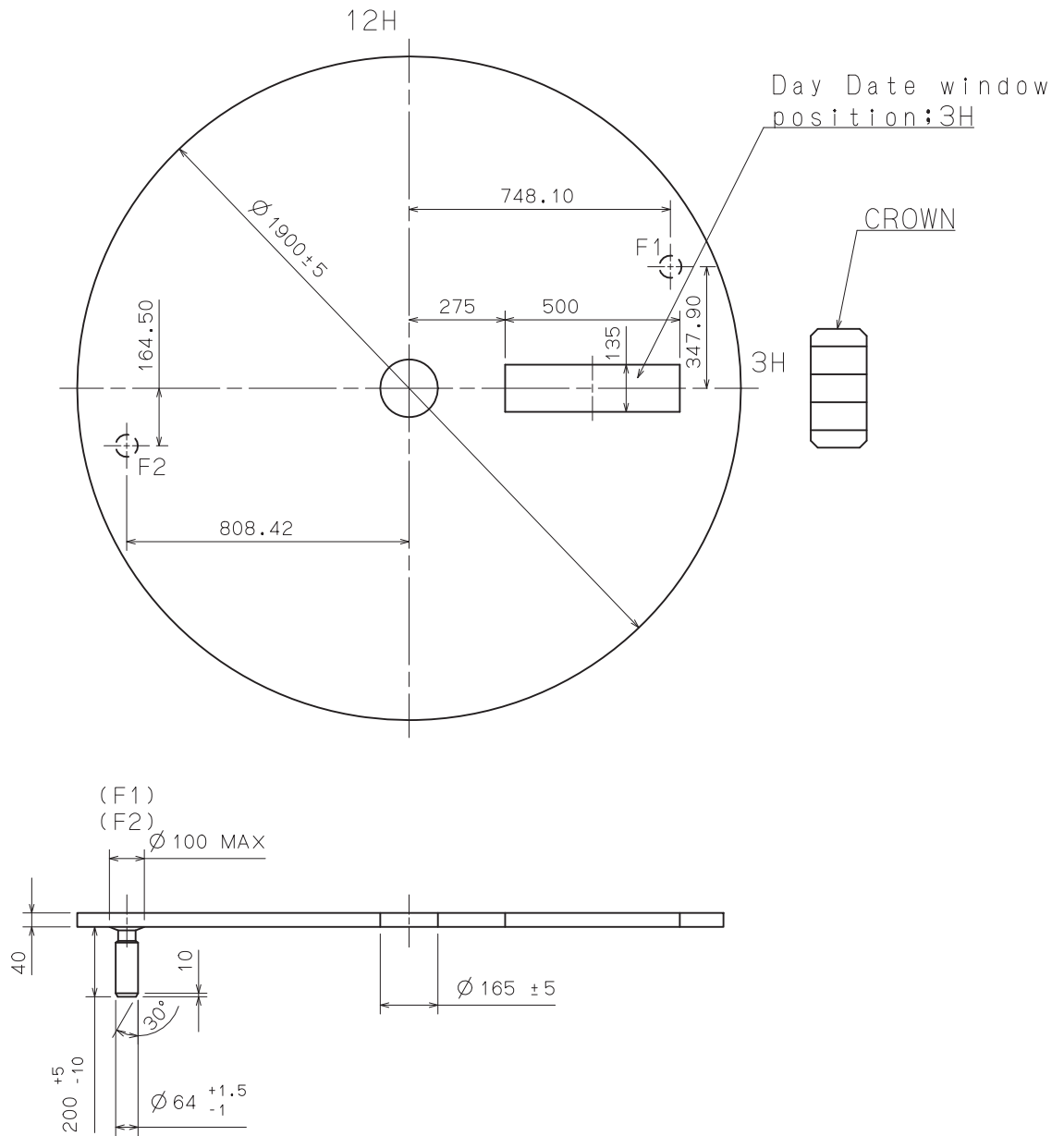
SECOND HAND FITTING
 Center second pinion 秒針輪 : 0245 425

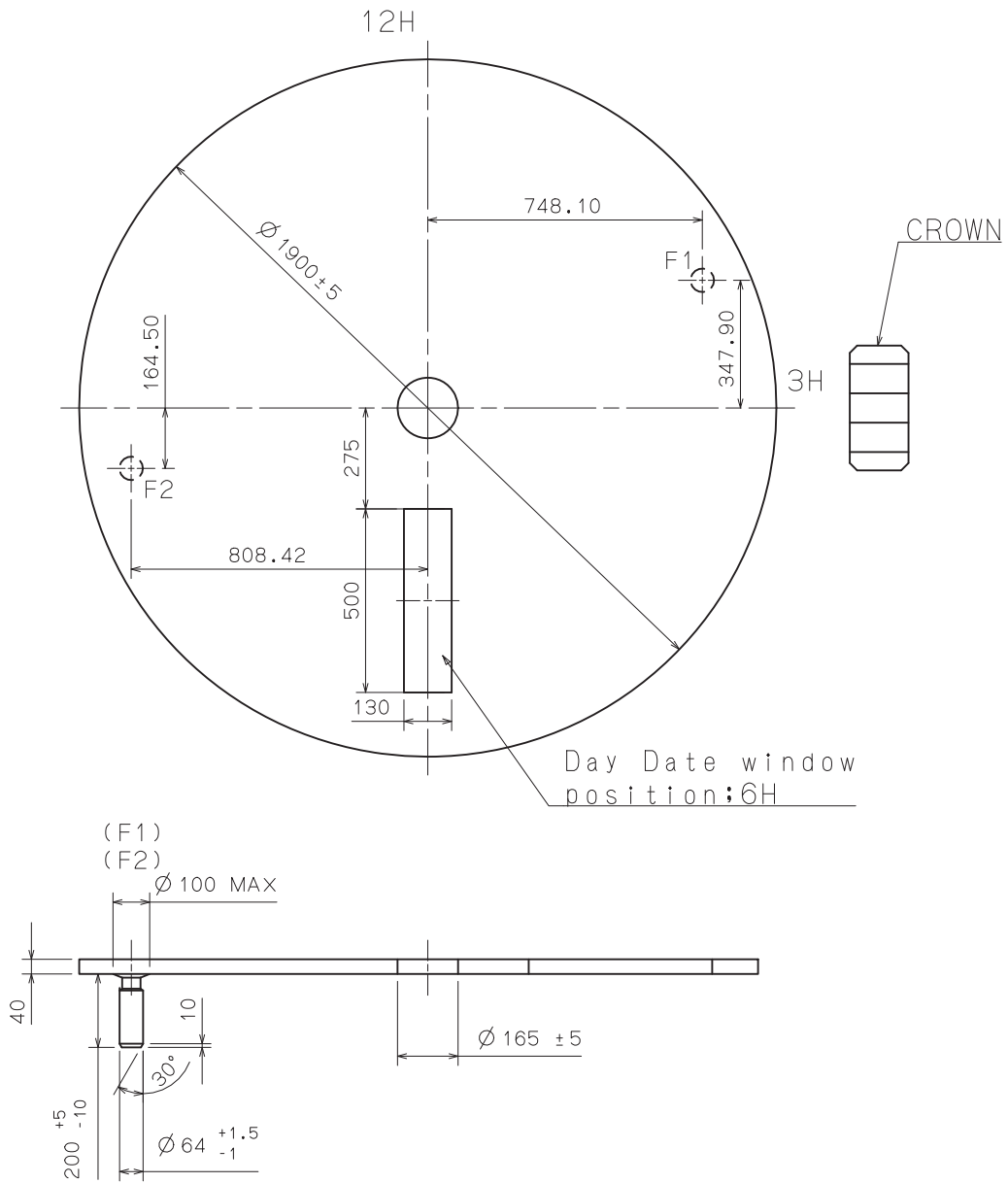


	A	B	C	D	E	F	G	H	t1	t2	t3
TYPE M 一般針高	62	101	137	40	35	26	24	47	15	15	10



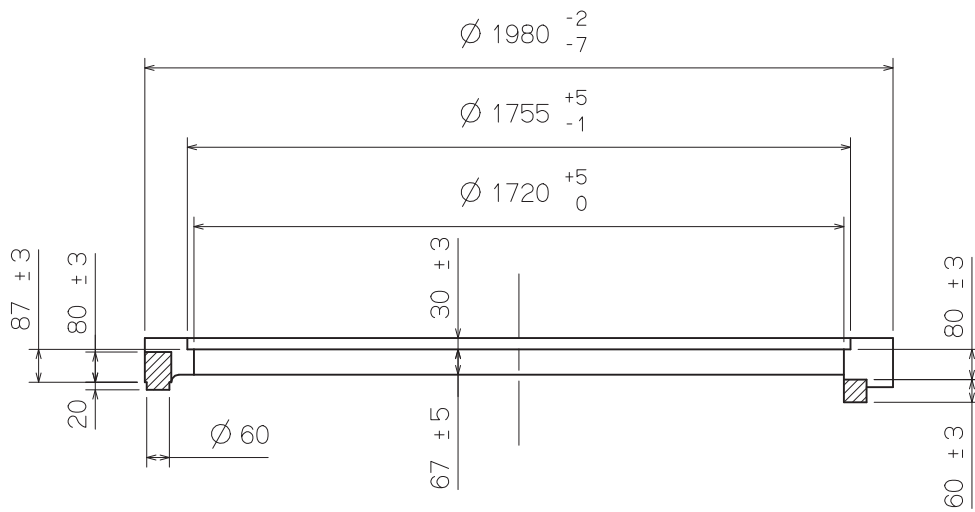
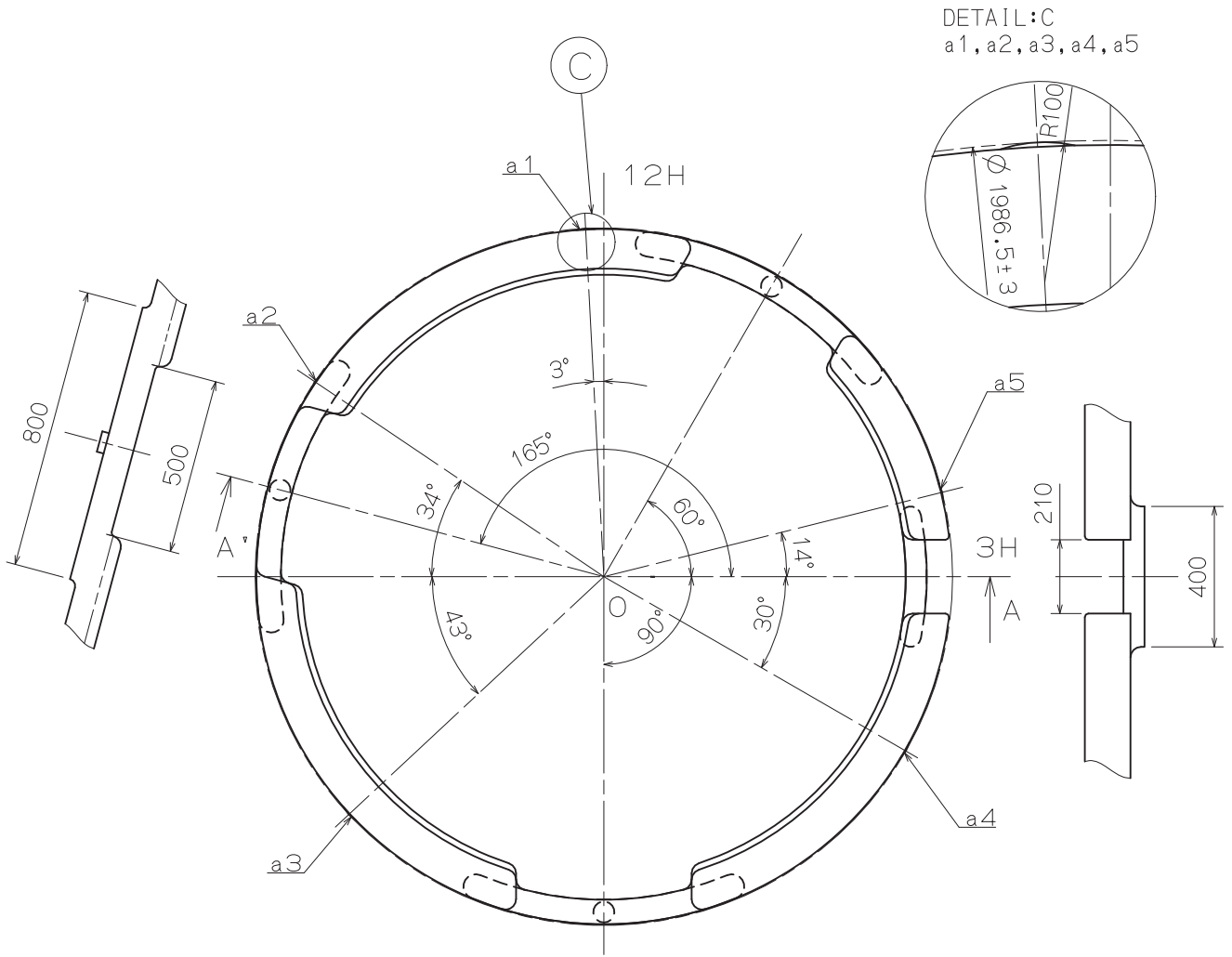
Part No.	A	B
0351 420	696	1294.5





Casing Ring

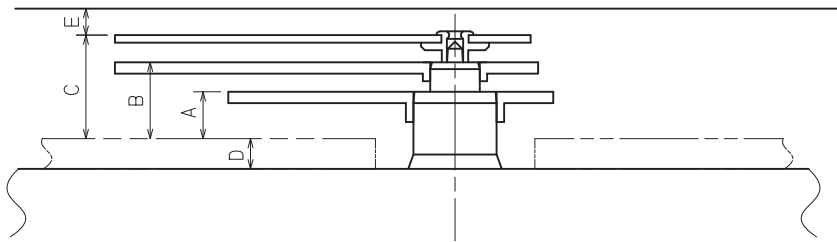
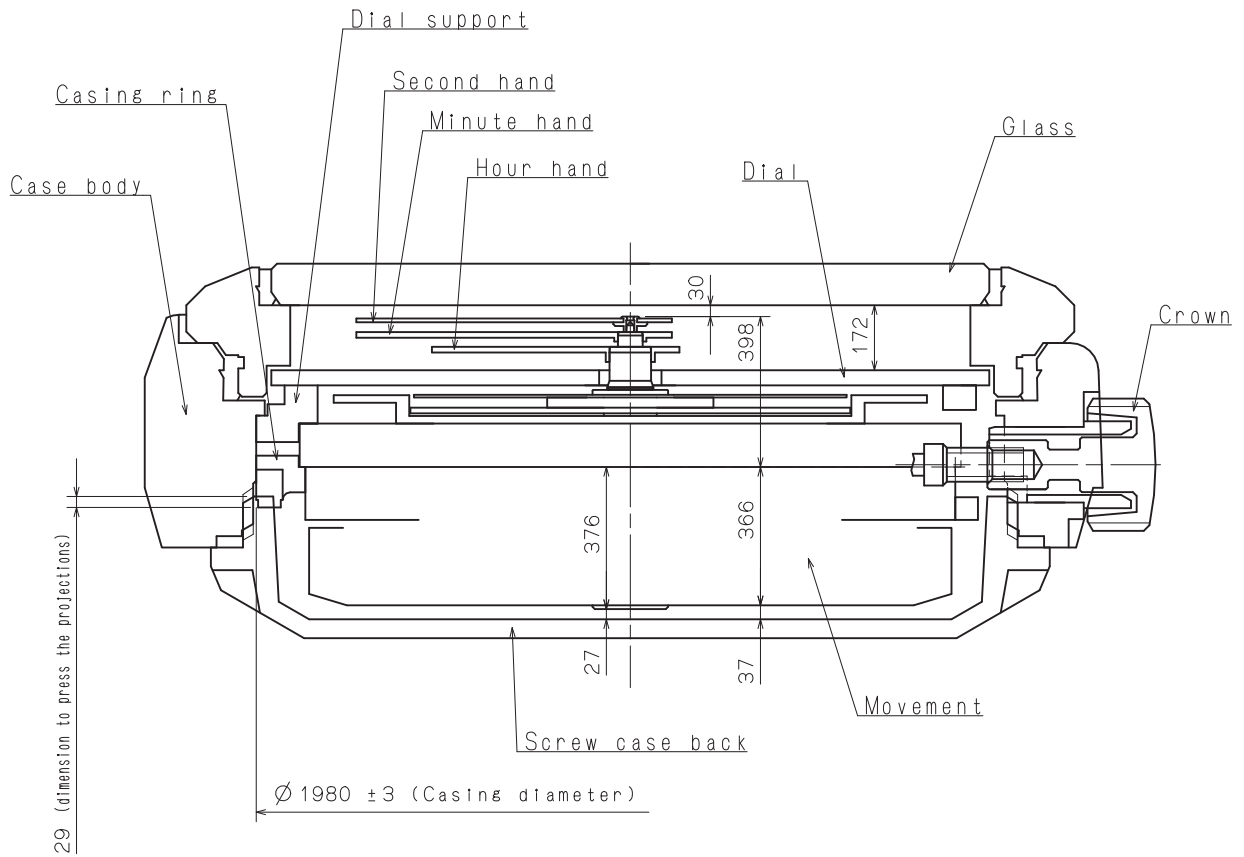
NH06B



A'-O-A section

Unit : 1=1/100mm

Version : 1



	A	B	C	D	E
TYPE M	62	101	137	40	35

