

# RONDA normtech 700 & 6000

Lange Batterielaufzeit und spezielle Funktionen

*Caliber 756 – 5½'''*



## Product Specifications

Analog quartz movement

Line

normtech

Caliber

756

Size

5½'''

Version Swiss Made  
Swiss Parts

4 Jewels / gold plated  
1 Jewels / nickel plated

Standard battery life

7 Years

Hand fitting height

1

## Features

- Very long battery life
- Electronic Time Setting:
  - brief pressure up to two seconds - minute correction
  - medium pressure between two and four seconds - hour correction
  - Pressure more than four seconds - continuous correction until corrector is released

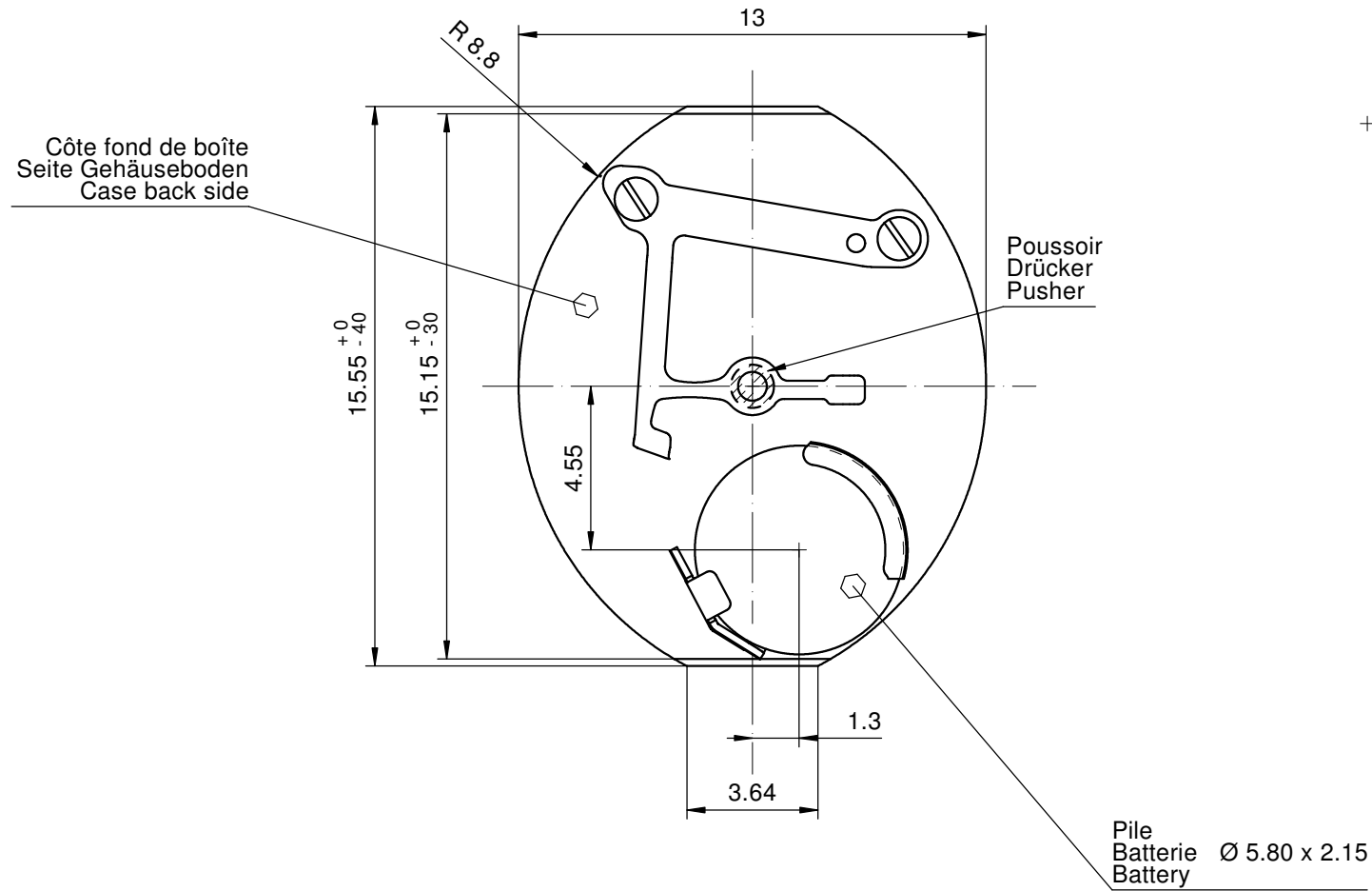
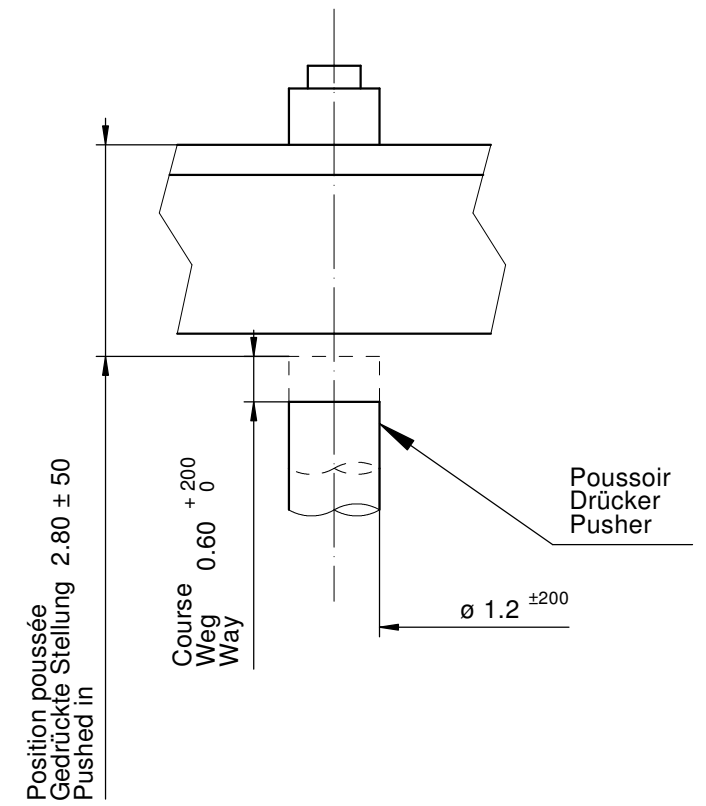
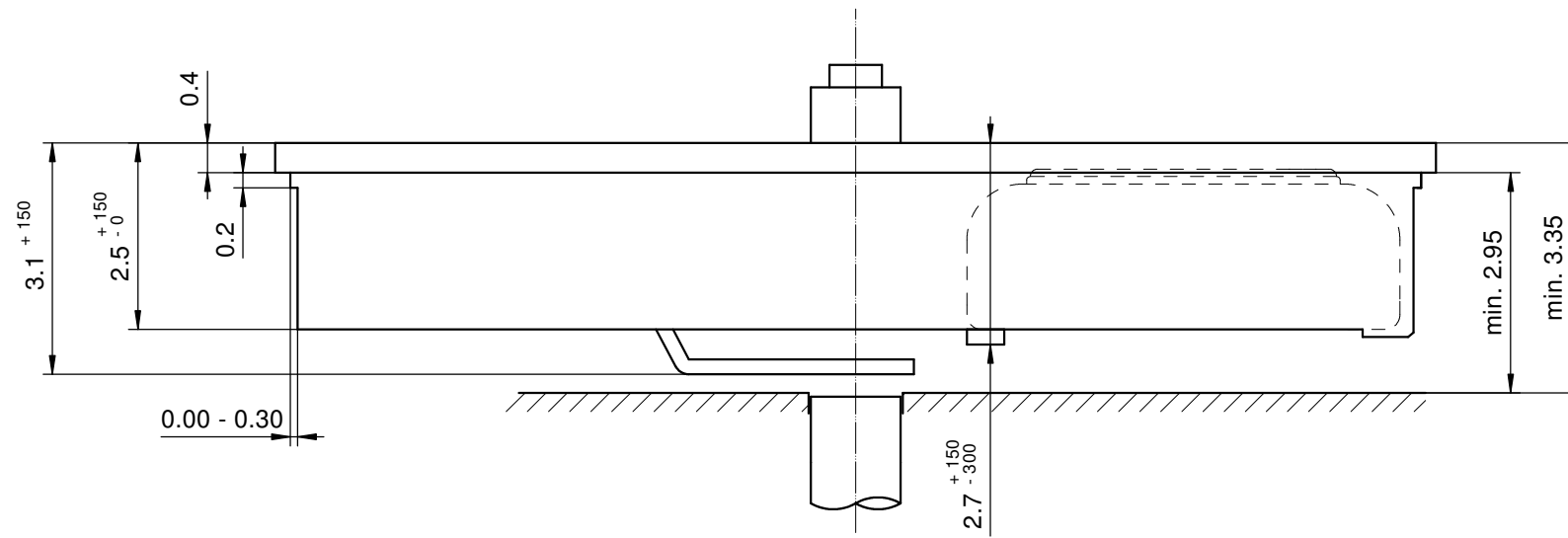
**Functions**

- 2 hands
- Electronic time setting

**Technical Specifications**

Diameter Total	13.00 mm
Case fitting	13.00 mm
Movement height	3.10 mm
Height over standard battery	3.10 mm
Movement rest	0.40 mm
Height over stem	0.00 mm
Length of stem travel	0.00 mm
Stem thread	0.00 mm
Standard battery	379
Standard battery life	7 Years
Battery voltage	1.5 V
Current consumption – typical	0.34 µA
Current consumption – maximum	0.4 µA
Useful torque minute – typical	30 µNm
Operating temperature	0 - 50 °C
Instantaneous rate	-10 / +20 sec/month
Resistance to magnetic fields	18.8 Oe
Resistance against shock	NIHS 91-10





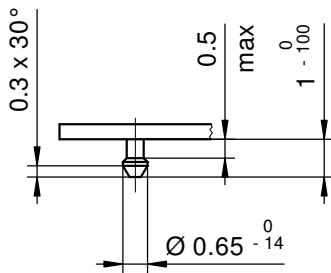
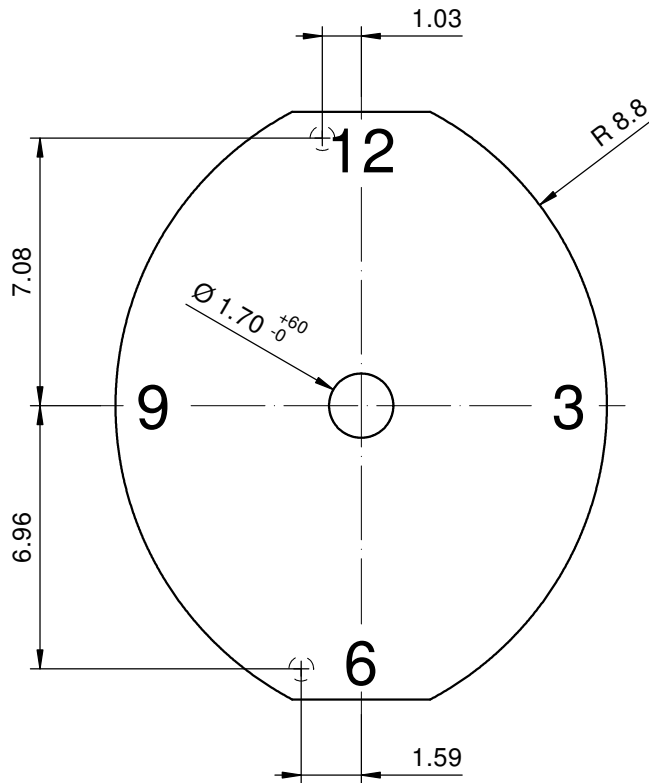
Sécurité entre aiguille seconde et verre : min 0.30 mm  
 Sicherheit zwischen Sekundenzeiger und Glas : min 0.30 mm  
 Security between second hand and glass : min 0.30 mm

Le cadran doit être maintenu en hauteur par la boîte.  
 Das Zifferblatt muss in der Höhe vom Gehäuse festgehalten werden.  
 The dial must be held in the height by the case.

Cage  
 Uhrwerkgestell 5 1/2"  
 Frame

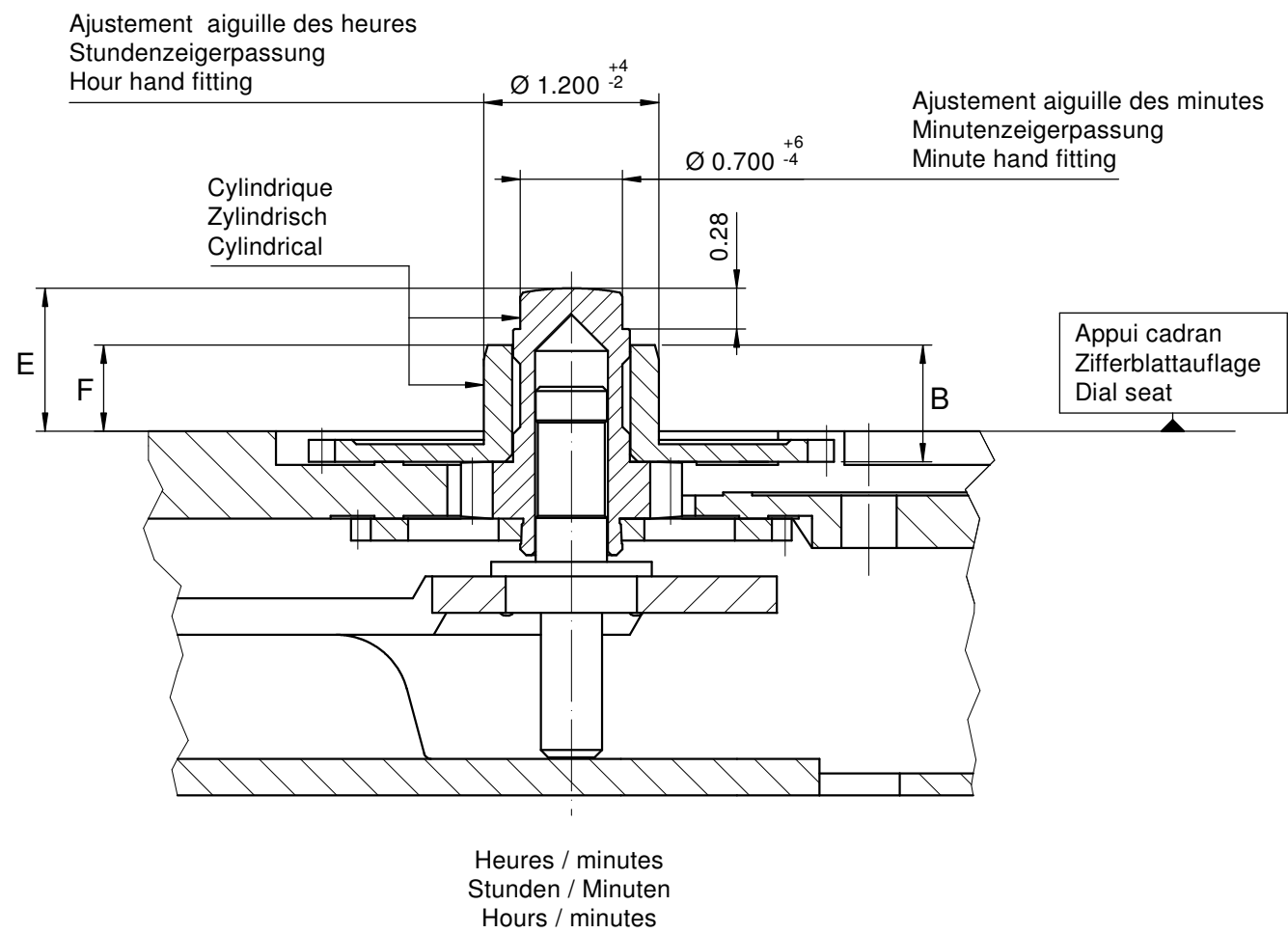
RONDA 756

Issued	25.08.2014	mk
Modified	11.05.2017	dh
Released	YES	
Mod. No.	13573	
Tolerance	±20 µm	
Scale	10 : 1	Page 1/1 A3
Sous réserve de modifications Änderungen vorbehalten Modifications reserved		
No.	5000.429	01



Epaisseur du cadran selon hauteur de l'aiguillage  
 Zifferblattdicke gemäss Zeigerwerkhöhen  
 Dial thickness according to hand fitting heights

<b>Cadran</b> <b>Zifferblatt 5 1/2'''</b> <b>Dial</b>	Issued	06 Jan 2016	dh
	Modified	17 Okt 2016 ÄA 13573	dh
	Released	YES	
	Tolerance	+/- 20 µm	
	Scale	5 : 1 (A4V)	
<b>RONDA</b>	<b>756</b>	Sous réserve de modifications Änderungen vorbehalten Modifications reserved	
		No.	5010.798



Aiguillage no Zeigerwerkhöhe Nr. Hand fitting height No	Dépassement Höhe über Zifferblattaufgabe Height over dial seat			Longueur Länge Length		Epaisseur max. (peinture comprise) Max. Dicke (inkl. Farbe) Max. thickness (paint included)		
	Chaussée Minutenrohr Cannon-pinion	Roue des heures Stundenrad Hour wheel		Roue des heures Stundenrad Hour wheel		Cadran Zifferblatt Dial		Aiguilles Zeiger Hands
						Sous l'aiguille des minutes Unter Minutenzeiger Under minute hand	Sous l'aiguille des heures Unter Stundenzeiger Under hour hand	
	E	F		B				
0	0.95	0.60		0.80		0.50	0.30	0.15
1	1.10	0.75		0.95		0.65	0.40	0.15
2	1.30	0.95		1.15		0.85	0.60	0.15
3	1.80	1.35		1.57		1.35	1.00	0.15
4	2.70	2.35		2.55		2.25	2.00	0.15
5	3.30	2.95		3.15		2.85	2.60	0.15

	Aig. des minutes Minutenzeiger Minute hand	Aig. des heures Stundenzeiger Hour hand	Lors de la pose d'aiguilles, le mouvement doit être soutenu. Beim Zeigersetzen muss das Werk abgestützt werden. The movement needs to be supported for hand setting.
mg max.	30	30	Masse / Masse / Weight *
µNm max.	0.14	0.14	Balourd / Unwucht / Unbalance *
gmm <sup>2</sup> max.	-	-	Inertie / Massenträgheit / Inertia *
N max.	40	40	Force de chassage / Aufpresskraft / Force

<b>Aiguillages</b> <b>Zeigerwerkhöhen 5½", 6¾ x 8"</b> <b>Hand fitting heights</b>		Issued	18 Feb 2001	mk
		Modified	06 Jan 2016 ÄA 13573	dh
		Released	Yes	
		Tolerance	µm	
		Scale	20 : 1 (A3H)	
RONDA	751, 756, 762, 762E	Sous réserve de modifications Änderungen vorbehalten Modifications reserved		
		No.	3316.002	20

\* En cas de données différentes, veuillez contacter le service après-vente

\* Bei abweichenden Werten, bitte technischen Kundendienst anfragen

\* In case of different values, please contact the customer service

# User's Manual English

## Movement Caliber

### RONDA normtech

– 756

You have decided to buy a watch, which was assembled by a watchmaker using a Ronda movement. Please note that no watches are produced or distributed under the Ronda brand.

In case of repairs, guarantee claims and questions concerning the functioning of a watch, purchasers and consumers should contact their retailer or the watch manufacturer, for which the relevant information can be found in the sales or guarantee documentation provided with the watch.



**ETS**

**Cal. 756**

#### **ETS – Electronic time setting on case back**

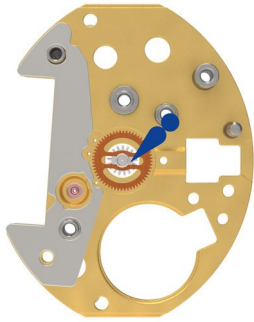
1. brief pressure up to two seconds: minute correction
2. medium pressure between two and four seconds: hour correction
3. Pressure more than four seconds: continuous correction until corrector is released





#### **Cal. 756**

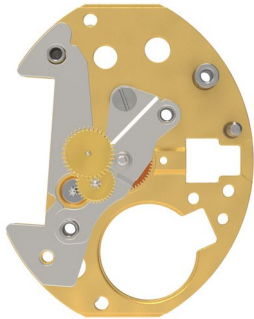
Battery type: 379/SR521SW




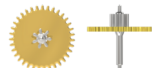
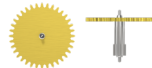
Precision: +20/-10 seconds per month

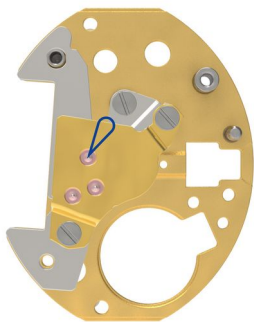








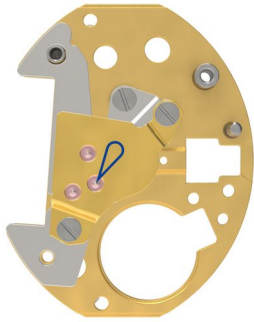
- |   |   |             |                      |
|---|---|-------------|----------------------|
| 1 |  | 2000.365.G  | Main plate           |
| 2 |  | 3622.018    | Stator               |
| 3 |  | 3305.174.CO | Cannon pinion (Aig.) |
| 4 |  | J124        | Jismaa 124           |



- |   |   |             |                    |
|---|---|-------------|--------------------|
| 5 |    | 2020.104.CO | Center bridge      |
| 6 |    | 4000.141    | Screw              |
| 7 |   | 3715.100.RK | Rotor              |
| 8 |  | 3147.020.CO | Intermediate wheel |
| 9 |  | 3122.045.CO | Third wheel        |



- |    |   |                |                    |
|----|---|----------------|--------------------|
| 10 |  | 2020.116.G.M25 | Train wheel bridge |
| 11 |  | 4000.141       | Screw              |
| 12 |  | 4000.141       | Screw              |
| 13 |  | 9014           | Moebius 9014       |

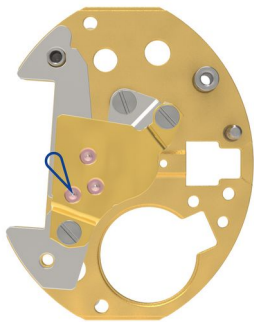


14



9014

Moebius 9014

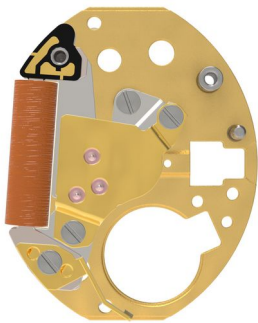


15



9014

Moebius 9014



16



3621.061.RK

Coil

Attention: Please hold the coil only on the grey coil core.

17



3601.039.G

Battery clamp (+)

18



4000.243

Screw





19

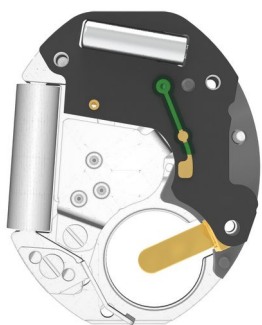


9014

Moebius 9014



20



21



3603.103

Insulator

22



3601.047

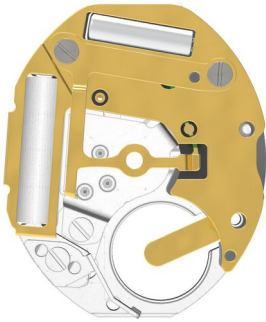
Contact strip (-)


23




3612.252


Electronic module

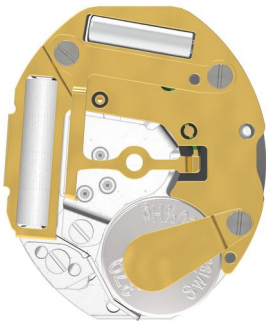


24  2130.251.G.M01 Module cover plate


25  3601.162.G Contact spring for pusher

26  4000.343 Screw

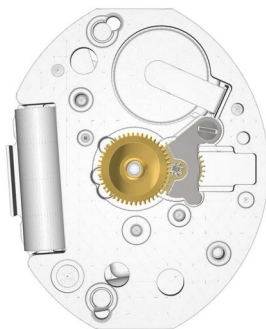
27  4000.343 Screw

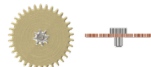



28  3600.018.HGF Battery 379 (Ø 5.80 x 2.15)

29  3601.171.G Battery clamp


30  4000.375 Screw




31  3007.052.CO Minute wheel

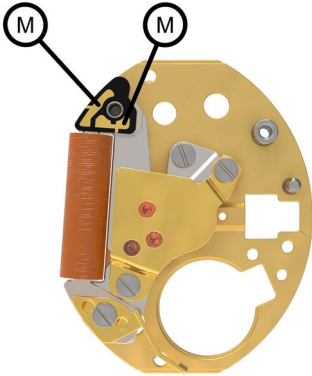
32  2130.041 Plate

33  4000.169 Screw

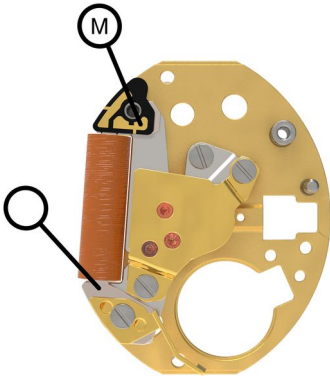
34  3301.133.TA Hour wheel (Aig.)

35  3315.001 Friction spring

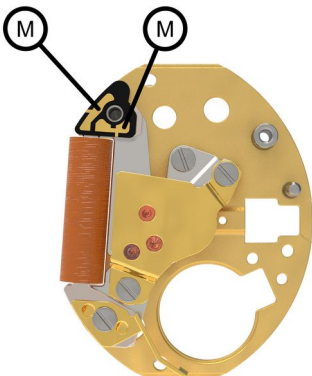
## Measurement



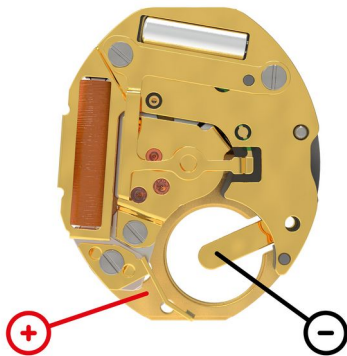
Pulsgenerator (4.9ms, (Hz)  
< 1.20 V



Spulenisolation M1  
infinite



Spulenwiderstand Werk  
(min./max) 1425 - 1575 Ohm



60s Messintervall.  
(typ./max.) 0.34 / 0.40  $\mu$ A

60s Messintervall.  
-10 .. +20s/mth

Untere Funktionsspannungsgrenze  
<1.20 V



Batteriespannung