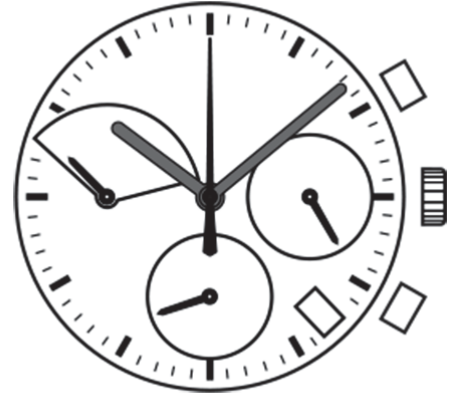


## Watch Movement Specification and Drawing

Premium Chronograph Movement

# VK83A



Movement Size: **13 1/2"**  
 Diameter: **Φ30.80mm**  
 Height: **5.10mm**

Items	Ver.	Items	Ver.
Specification	1		
Appearance	1		
Casing	1		
Hand Fitting	1		
Hand Setting Stem	1		
Dial	1		
Assembly Plan - 1	1		
Assembly Plan - 2	1		
Hands	1		

## CAL.VK83A 13½ Ligne Quartz Movement

### Two Hands with 3 Eyes & Date

### 1/5 Center Chronograph Second Hand

### Small Retrograde Chronograph Minute Hand, Small Second & 24 Hour Indicator Hands

#### 1. FUNCTION

· Jewel	0 jewel
· Accuracy	Less than $\pm 20$ seconds / month (Normal temperature range)
· Battery life	Approx. 3 years
· Regulation hands unbalance	Hour hand : Less than $0.50 \mu\text{N}\cdot\text{m}$ ( 50 mg·mm )
	Minute hand : Less than $0.60 \mu\text{N}\cdot\text{m}$ ( 60 mg·mm )
	Small second & 24 hour indicator hands : Less than $0.05 \mu\text{N}\cdot\text{m}$ ( 5 mg·mm )
	Center chronograph second hand : Less than $0.20 \mu\text{N}\cdot\text{m}$ ( 20 mg·mm )
	Small retrograde chronograph minute hand : Less than $0.05 \mu\text{N}\cdot\text{m}$ ( 5 mg·mm )
	· The moment of inertia
· Additional function	Date display with quick date correction
	Chronograph : maximum count for 60 minutes per cycle
	24 hour indicator (Synchronized regular hour hand)

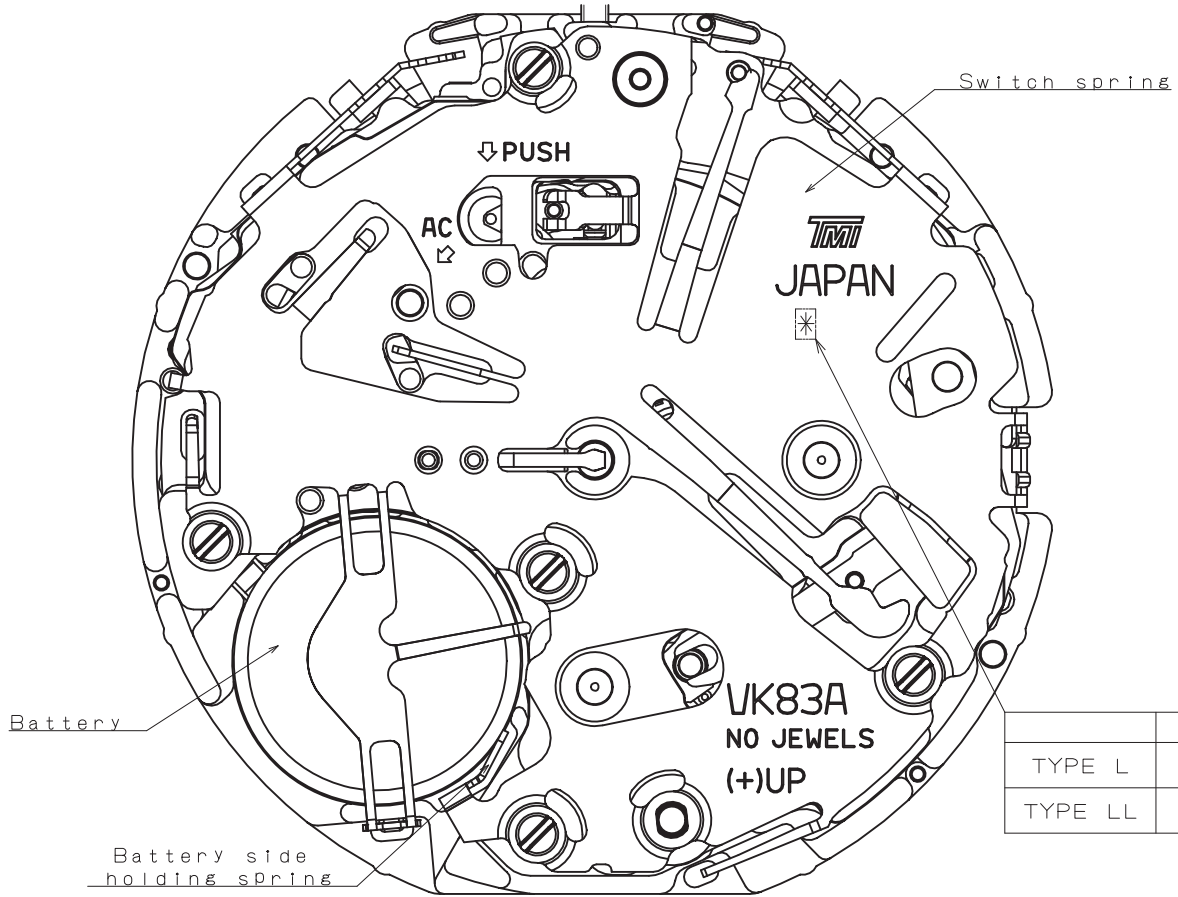
#### 2. USE AND TEST CONDITION

· Battery	SR936SW	(Recommended battery is SEIZAIKEN)
· Operation temperature range	From $-5 \text{ }^\circ\text{C}$ to $+50 \text{ }^\circ\text{C}$	
· Antimagnetic	$\geq 1600 \text{ A / m}$	(Direct current magnetic field)
· Test of accuracy	10 seconds	(Duration of measurement)

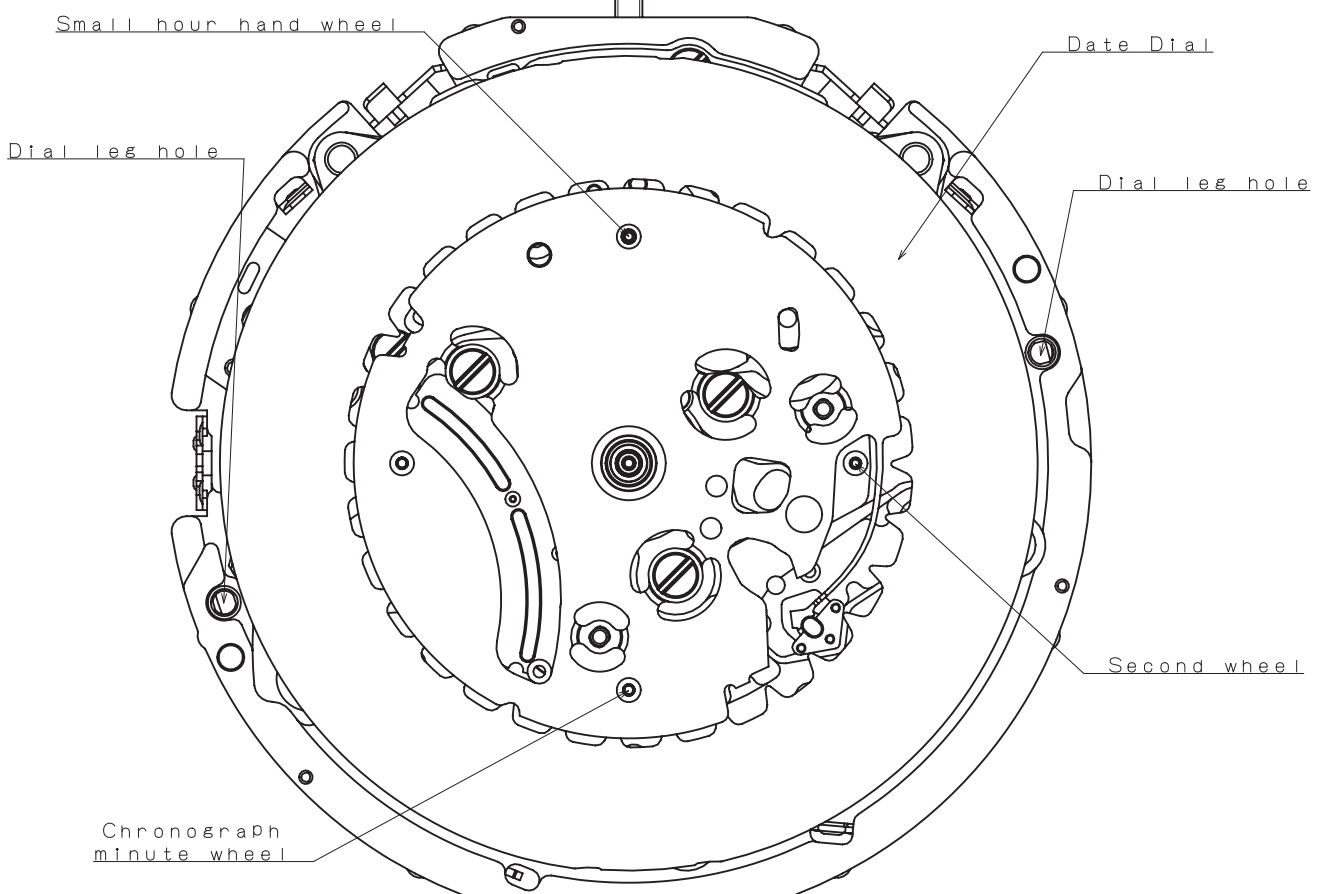
**\* All specifications are subject to change without notice.**

# Appearance

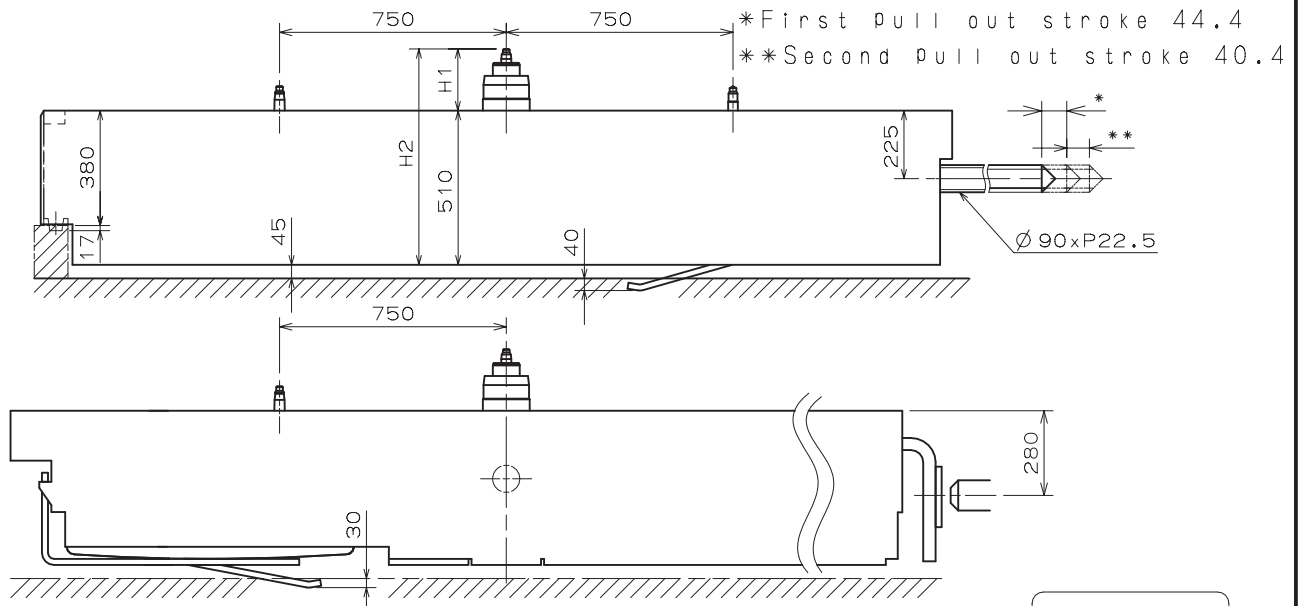
# VK83A



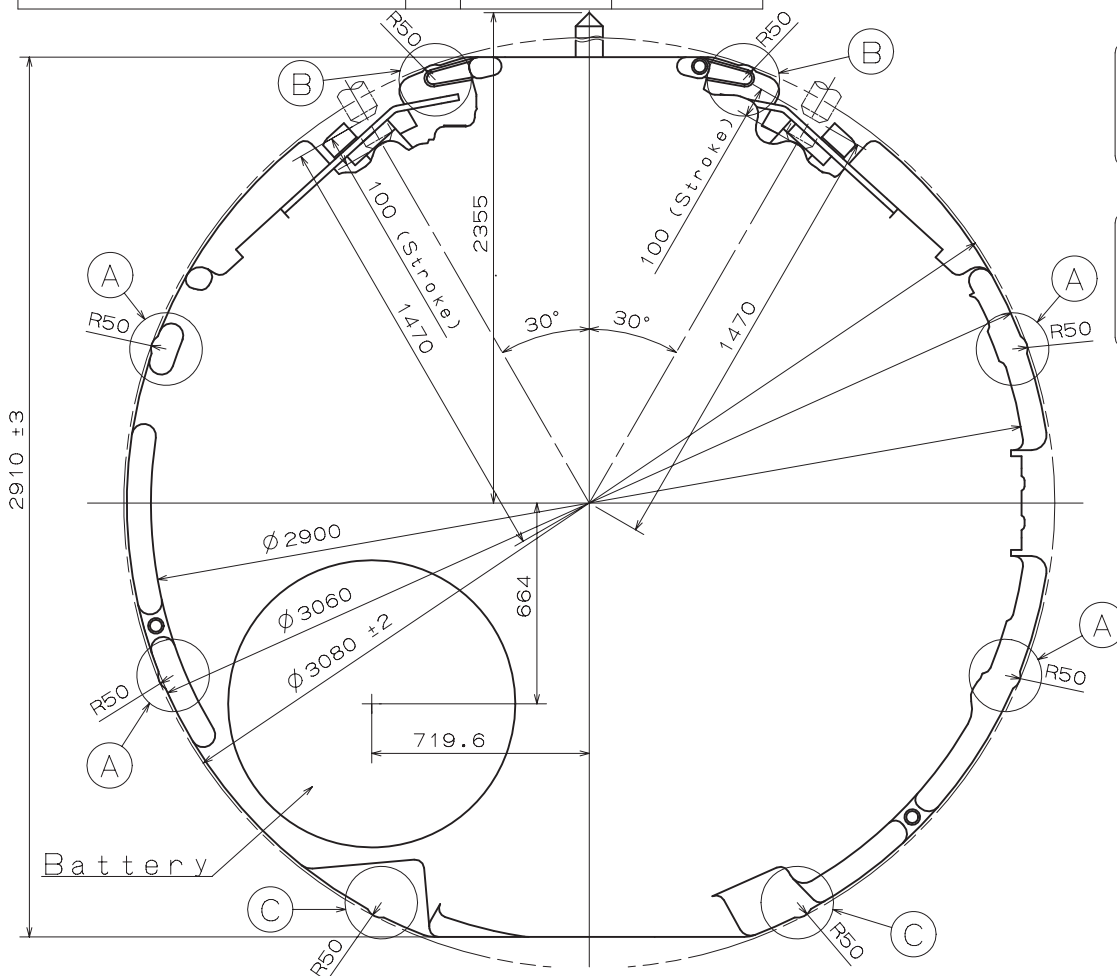
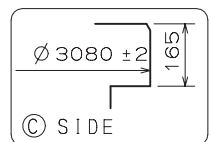
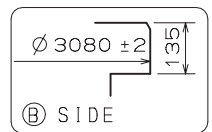
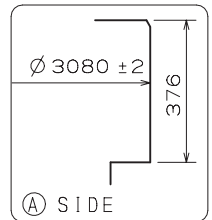
	*
TYPE L	3
TYPE LL	4



Version : 1



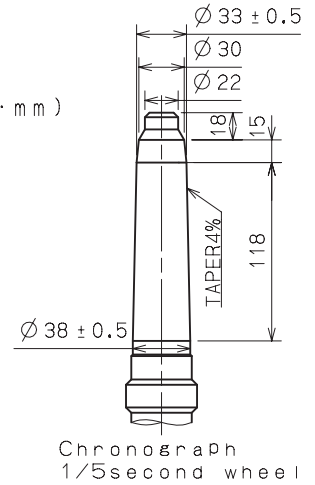
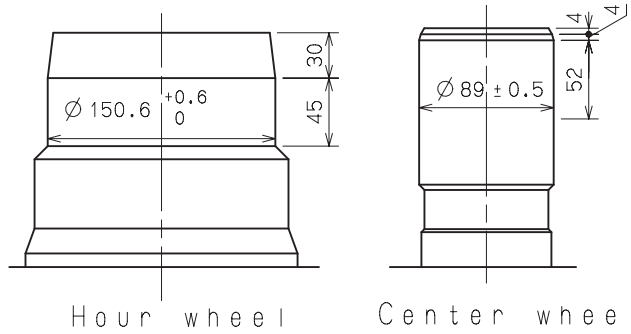
Center post 中心柱位		TYPE L 高針	TYPE LL 特高針
Maximum height from main plate surface 與機芯平面的最大高度	H1	235	280
Total height incl. movement 機芯總高度	H2	745	790



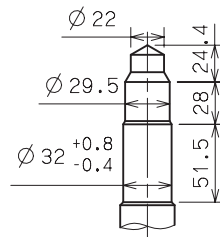
# Hand Fitting

VK83A

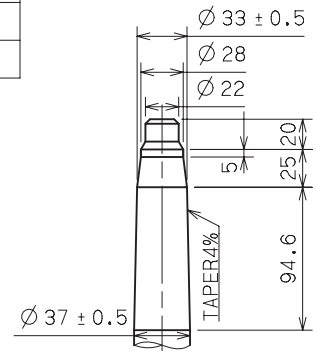
- \* Hour hand unbalance  $\leq 0.5 \mu\text{N}\cdot\text{m}$  (50mg·mm)
- \* Minute hand unbalance  $\leq 0.6 \mu\text{N}\cdot\text{m}$  (60mg·mm)
- \* Second hand unbalance  $\leq 0.05 \mu\text{N}\cdot\text{m}$  (5mg·mm)
- \* Small hour hand unbalance  $\leq 0.05 \mu\text{N}\cdot\text{m}$  (5mg·mm)
- \* Chronograph 1/5 second hand unbalance  $\leq 0.20 \mu\text{N}\cdot\text{m}$  (20mg·mm)
- \* Chronograph minute hand unbalance  $\leq 0.05 \mu\text{N}\cdot\text{m}$  (5mg·mm)



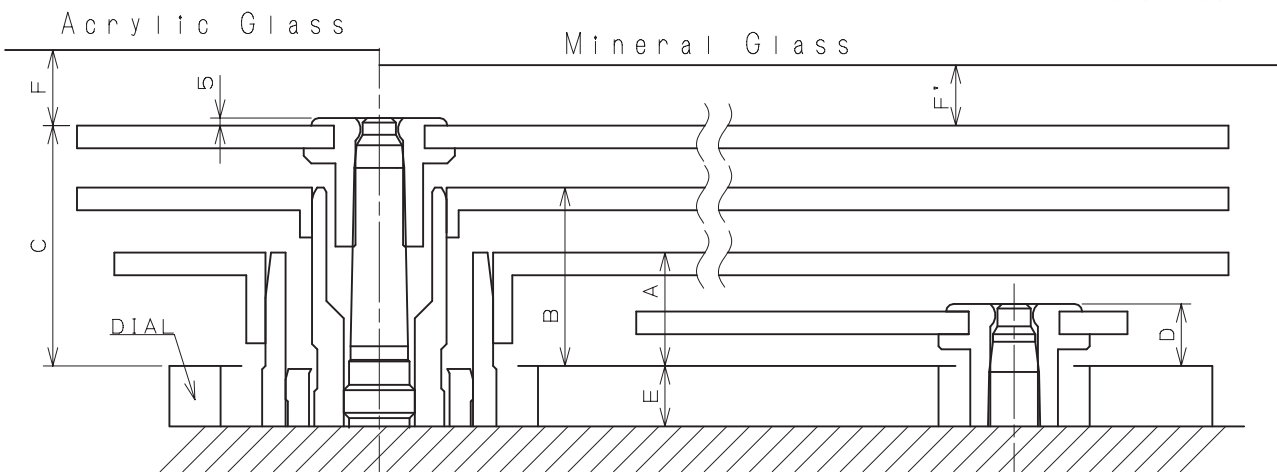
Part name		Part No.	
		TYPE L 高針	TYPE LL 特高針
Hour wheel . . . . .	時針輪	0273 041	0273 042
Center wheel	分針輪	0221 091	0221 092
Second wheel	秒針輪	0240 018	0240 019
Small hour hand wheel	小時針輪	0157 012	0157 013
Chronograph minute wheel	計時分針輪	0740 002	0740 003
Chronograph 1/5 second wheel	1/5計時秒針輪	0888 018	0888 019



Second wheel  
Small hour hand wheel



Chronograph minute wheel

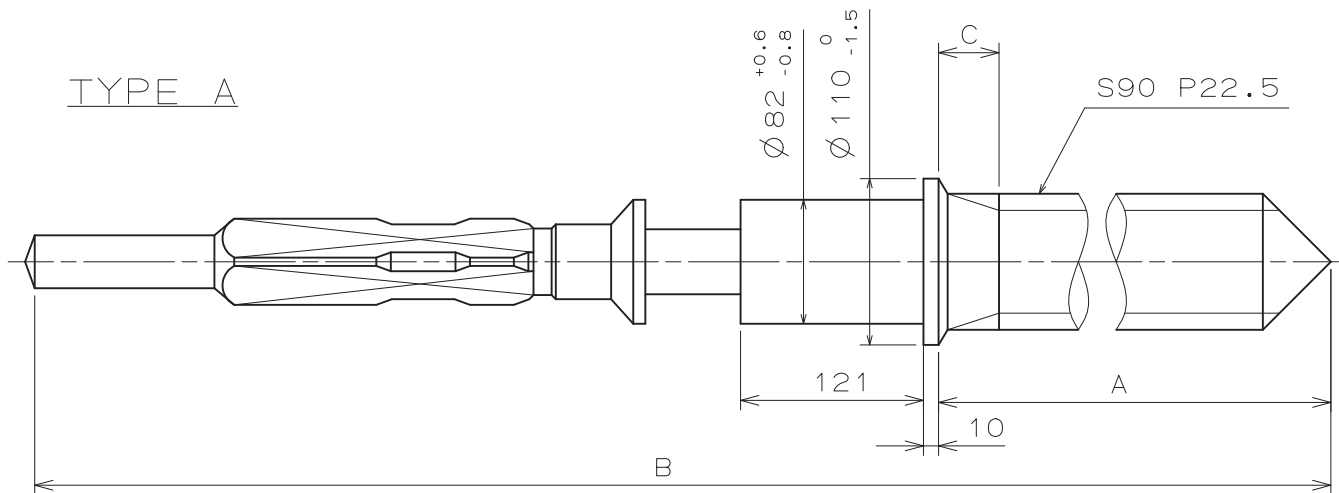


	A	B	C	D	E	F	F'
TYPE L 高針	95	145	190	41	40	50	40
TYPE LL 特高針	95	145	190	45	85	50	40

\*Do not reuse the chronograph hands once detached.  
Please change and use new hands.

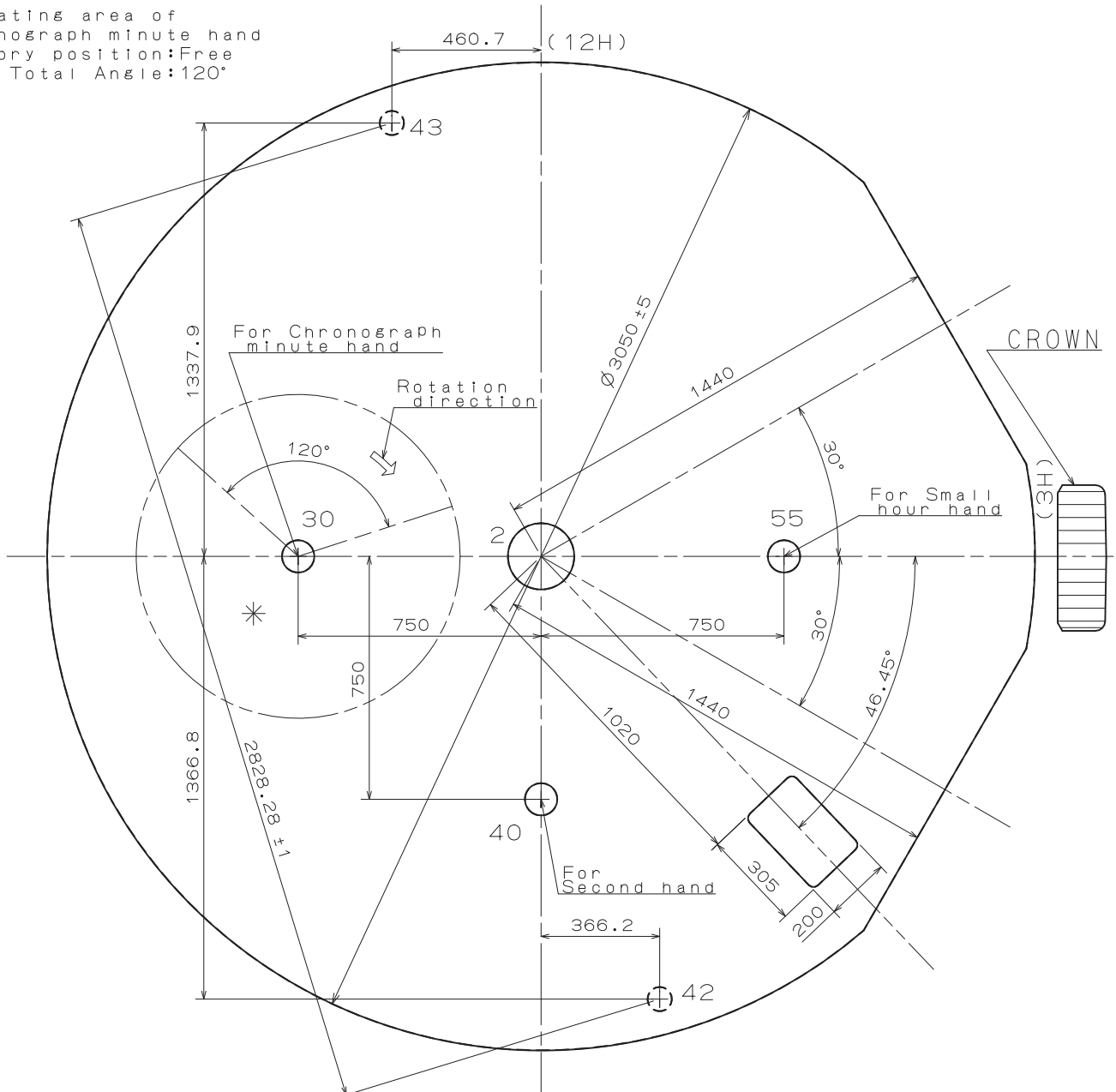
Unit : 1=1/100mm

Version : 1

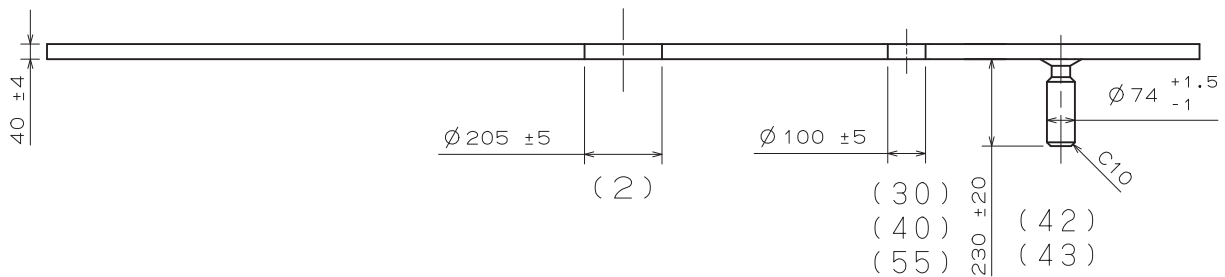


	Part No.	A	B	C
TYPE A	0351 177	1371	1969	40MAX

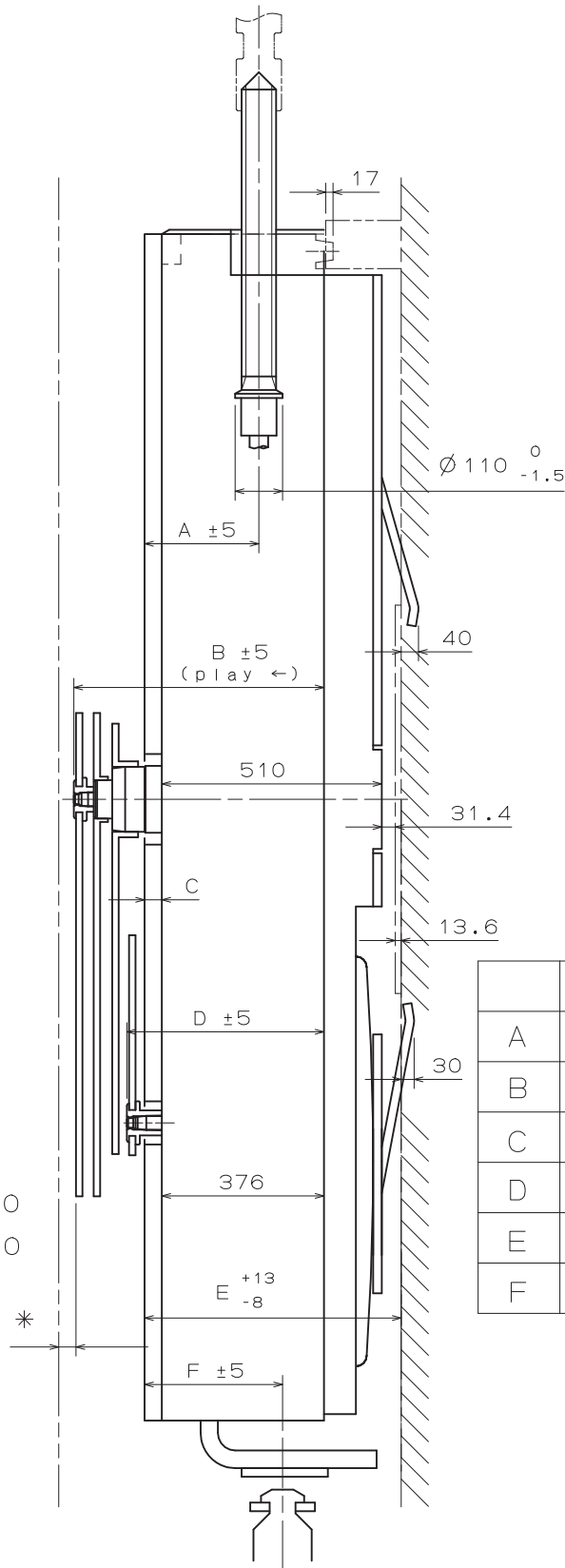
Operating area of  
Chronograph minute hand  
Memory position: Free  
Total Angle: 120°



\*Hand passing area, do not put any obstacle higher than chronograph minute hand around this perimeter. Please refer to [Hand Fitting] for details.



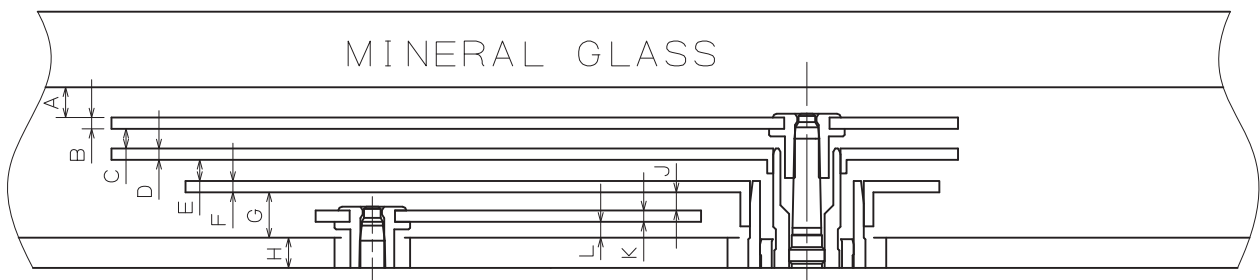
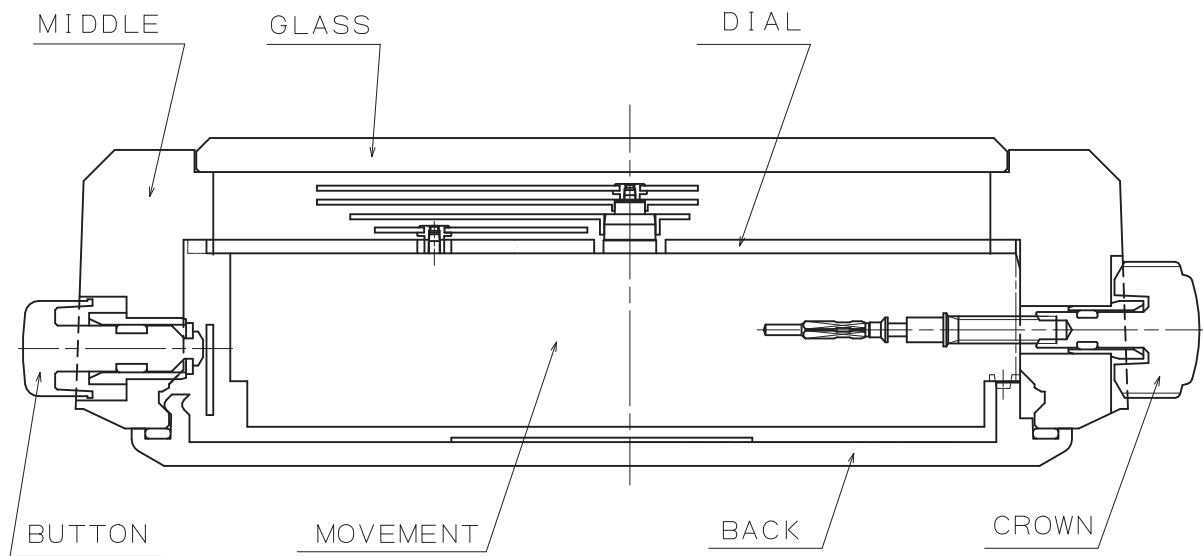
The tolerance of 2# hole position should be under 5 (Standard is 42#-43#)



\*Acrylic Glass 50  
\*Mineral Glass 40

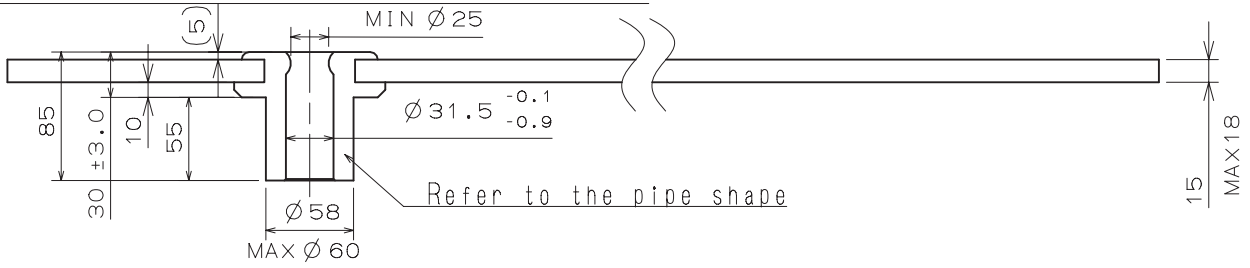
	TYPE L	TYPE LL
A	265	310
B	611	656
C	40	85
D	457	506
E	595	640
F	320	365



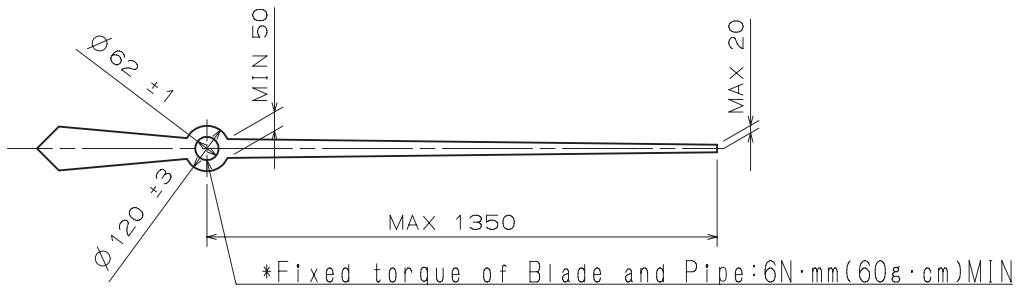


	TYPE L	TYPE LL
A	40	40
B	15	15
C	30	30
D	15	15
E	35	35
F	15	15
G	80	80
H	40	85
J	44	40
K	15	15
L	21	25

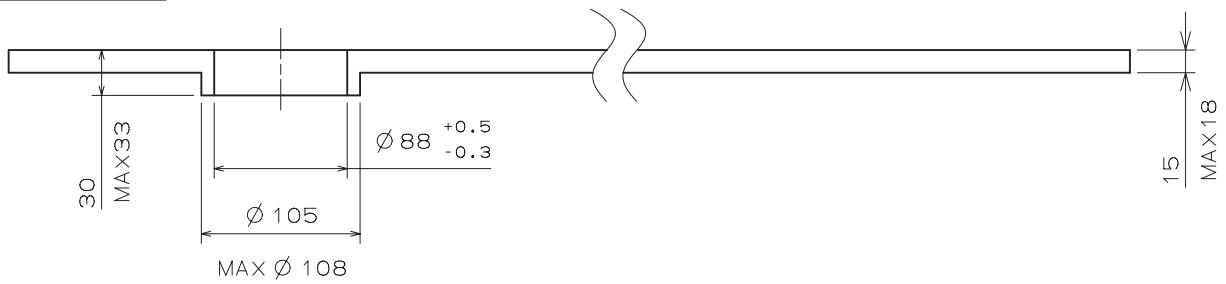
CHRONOGRAPH 1/5 SECOND



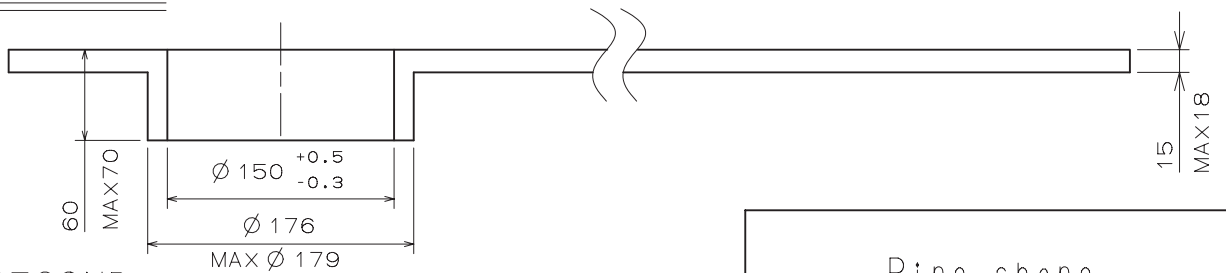
Recommended shape (Straight hand)



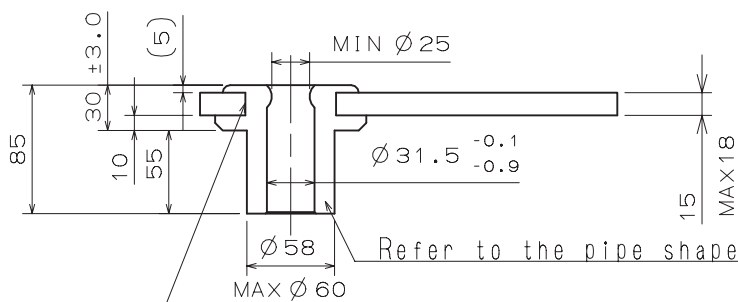
MINUTE



HOUR



SECOND  
SMALL HOUR  
CHRONOGRAPH MINUTE



\*Fixed torque of Blade and Pipe: 6N·mm(60g·cm)MIN

