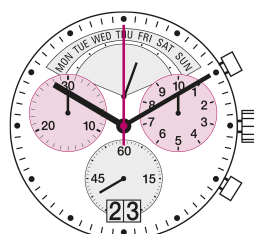


RONDA mastertech 8000

XXL Chronographs,
Retrograde and Big Date

Caliber 8040.N – 15'''



Product Specifications

Analog quartz movement	
Line	mastertech
Caliber	8040.N
Size	15'''
Version	Swiss Made
Standard battery life	13 Jewels / gold plated
Hand fitting height	48 months
	1

Features

- Very long battery life
- Repairable metal watch movement
- Power saving mechanism with pulled out stem: Reduction of consumption approximately 70%
- Very easy handling by two pushers
- Big date with quick change

Functions

- Chronograph
- Center stop second (1/1 sec)
- 1/10 seconds up to 30 minutes
- 30 minute counter
- 10 hour counter
- ADD and SPLIT functions
- 3 eyes
- Day indicator
- Big date
- Small second
- Day Retrograde
- Retrograde

Technical Specifications

Diameter Total	34.60 mm
Case fitting	33.80 mm
Movement height	5.60 mm
Height over standard battery	5.60 mm
Movement rest	0.60 mm
Height over stem	3.30 mm
Length of stem travel	1.00 mm
Stem thread	0.90 mm
Standard battery	395
Standard battery life	48 months
Battery voltage	1.5 V
Current consumption – typical	1.48 μ A (Date Mechanism not in Gear)
Current consumption – maximum	2 μ A (Date Mechanism not in Gear)
Useful torque second – typical	6 μ Nm
Useful torque minute – typical	300 μ Nm
Useful torque center stop second – typical	7 μ Nm
Operating temperature	0 - 50 °C
Instantaneous rate	-10/ +20 sec/month
Resistance to magnetic fields	18.8 Oe
Resistance against shock	NIHS 91-10

Watch production

- Drawing Casing ring (standard, PDF)
- Drawing Dial (stem 3h, day retro 12h, date 6h, PDF)
- Drawing Hand fitting (hand height 1, PDF)
- Drawing Stem
- Casing information (PDF)

User's manual

- User's manual (PDF)

Watch repairs

- Technical instruction as of code M (PDF)
- Technical instruction as of code V (PDF)

