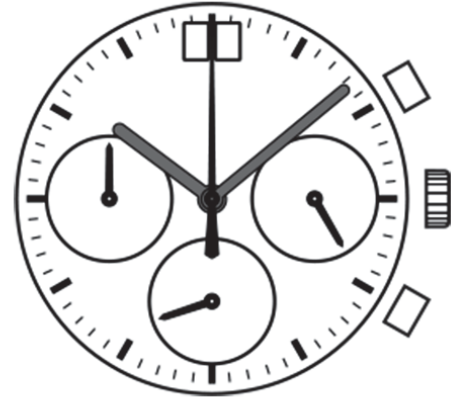


Watch Movement Specification and Drawing

Premium Chronograph Movement

VK73A



Movement Size: **13 1/2"**
 Diameter: **Φ30.80mm**
 Height: **5.10mm**

Items	Ver.	Items	Ver.
Specification	1		
Appearance	1		
Casing	1		
Hand Fitting	1		
Hand Setting Stem	1		
Dial - 1	1		
Dial - 2	1		
Assembly Plan - 1	1		
Assembly Plan - 2	1		
Hands	1		

CAL.VK73A 13½ Ligne Quartz Movement

Two Hands with 3 Eyes & Big Date

1/5 Center Chronograph Second Hand

Small Chronograph Minute Hand, Small Second & 24 Hour Indicator Hands

1. FUNCTION

· Jewel	0 jewel	
· Accuracy	Less than ±20 seconds / month (Normal temperature range)	
· Battery life	Approx. 3 years	
· Regulation hands unbalance	Hour hand	: Less than 0.50 μN·m (50 mg·mm)
	Minute hand	: Less than 0.60 μN·m (60 mg·mm)
	Small second & 24 hour indicator hands	: Less than 0.05 μN·m (5 mg·mm)
	Center chronograph second hand	: Less than 0.20 μN·m (20 mg·mm)
	Small chronograph minute hand	: Less than 0.05 μN·m (5 mg·mm)
· The moment of inertia	Center chronograph second hand	: Less than 400 mg·mm ²
	Small chronograph minute hand	: Less than 30 mg·mm ²
· Additional function	Big Date display with quick date correction	
	Chronograph : maximum count for 60 minutes per cycle	
	24 hour indicator (Synchronized regular hour hand)	

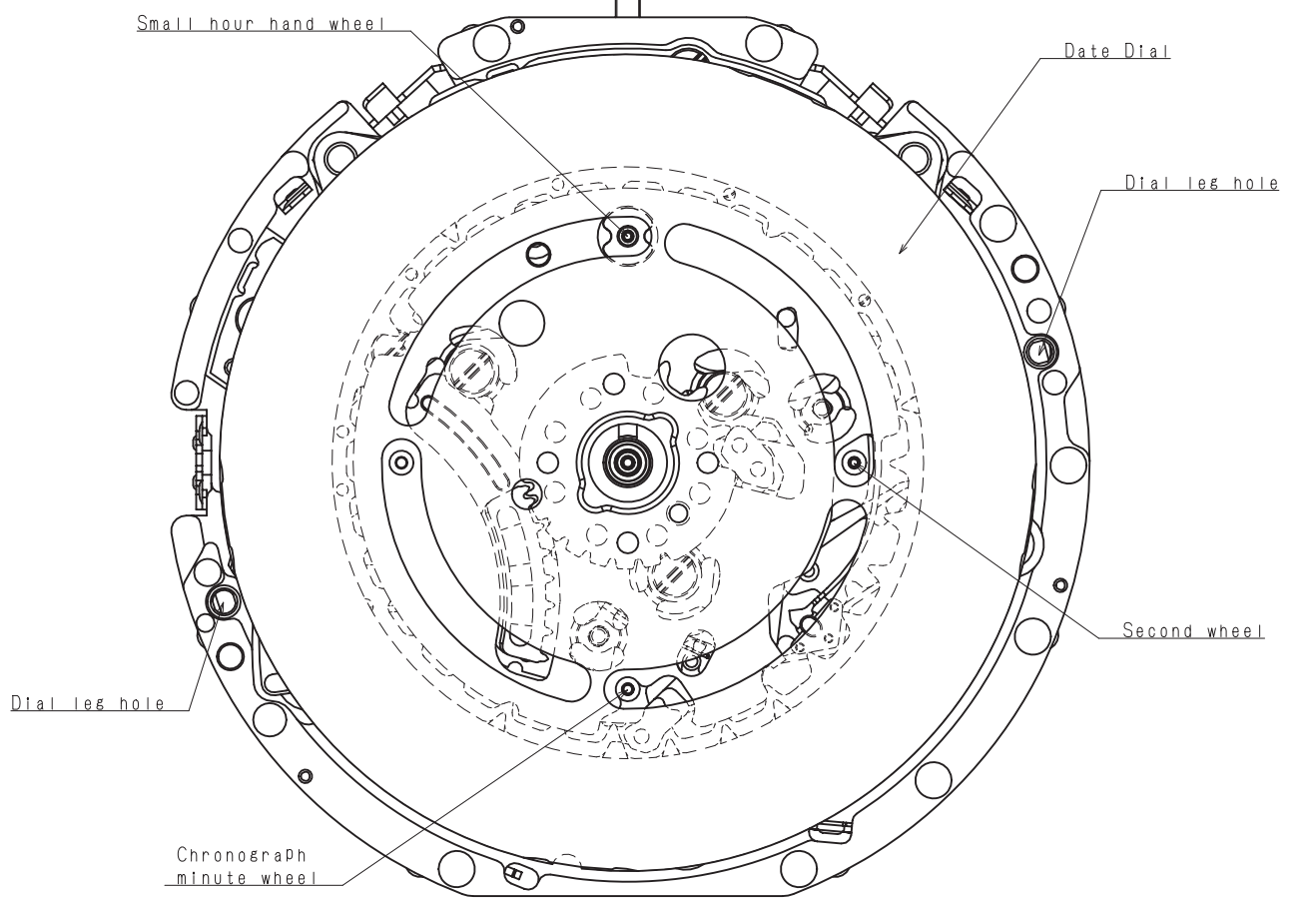
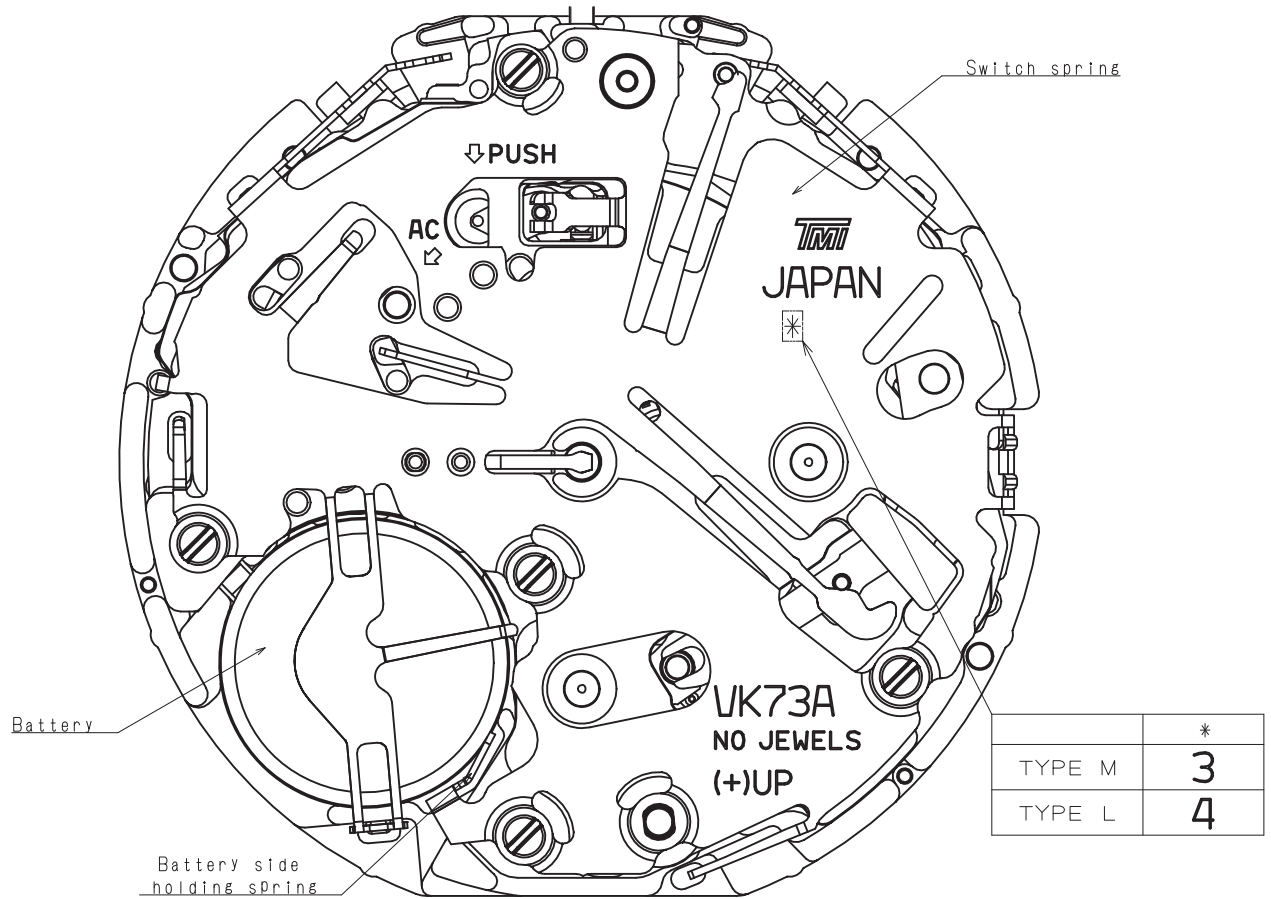
2. USE AND TEST CONDITION

· Battery	SR936SW	(Recommended battery is SEIZAIKEN)
· Operation temperature range	From - 5 °C to + 50 °C	
· Antimagnetic	≥1600 A / m	(Direct current magnetic field)
· Test of accuracy	10 seconds	(Duration of measurement)

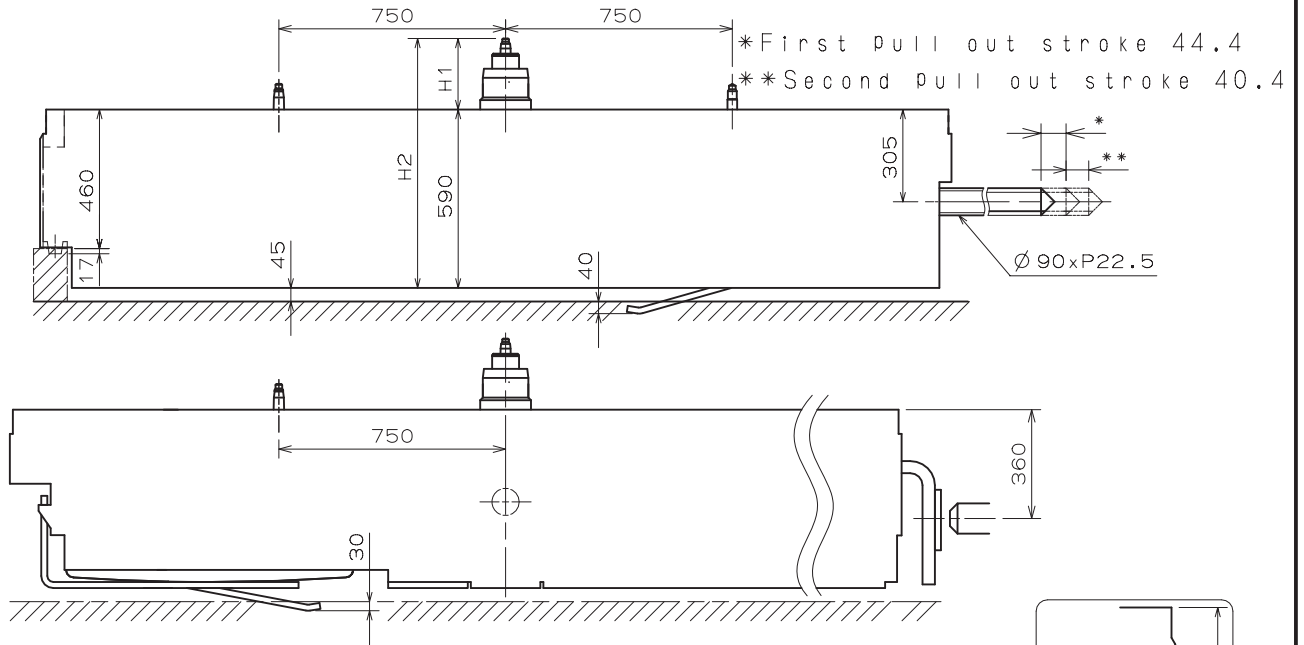
*** All specifications are subject to change without notice.**

Appearance

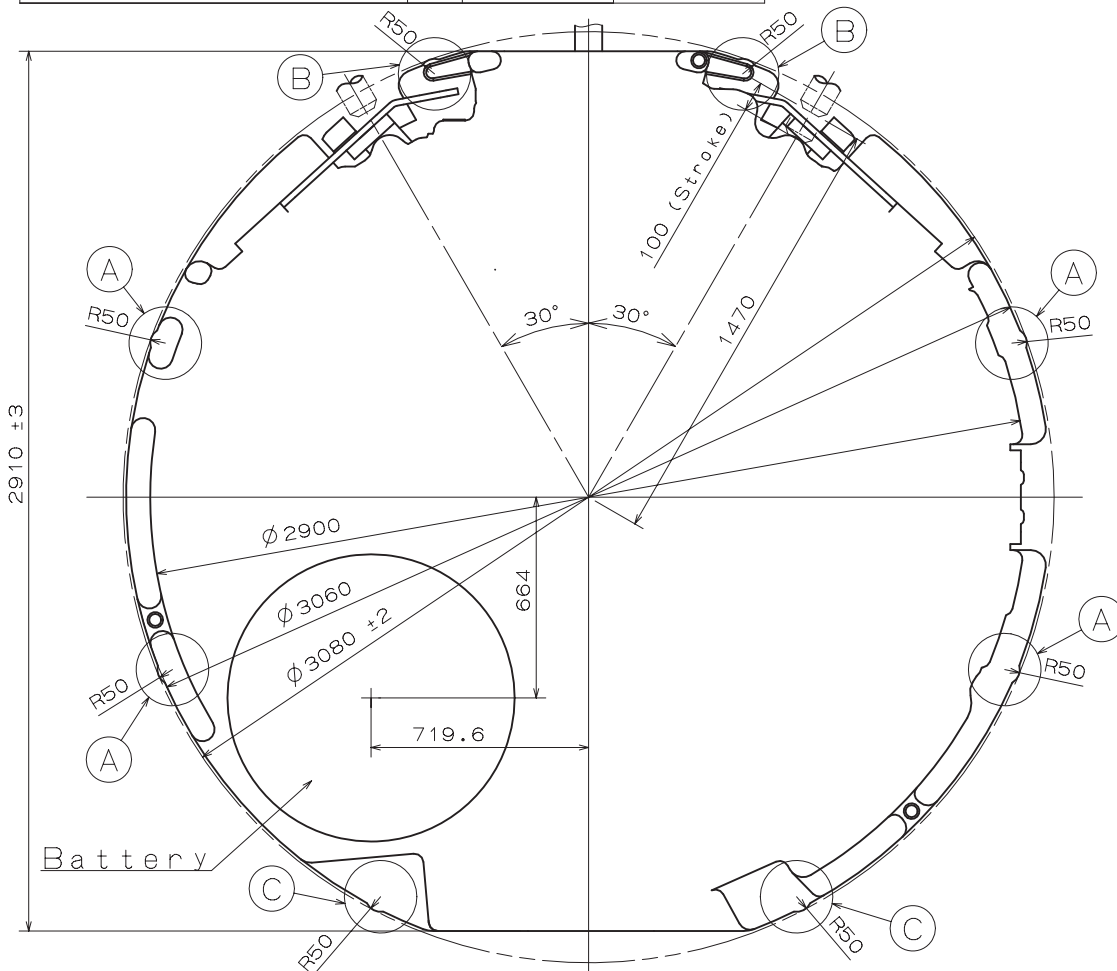
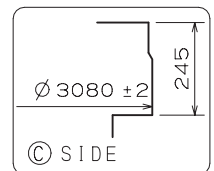
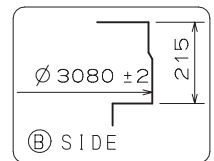
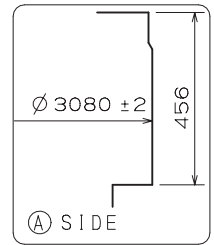
VK73A



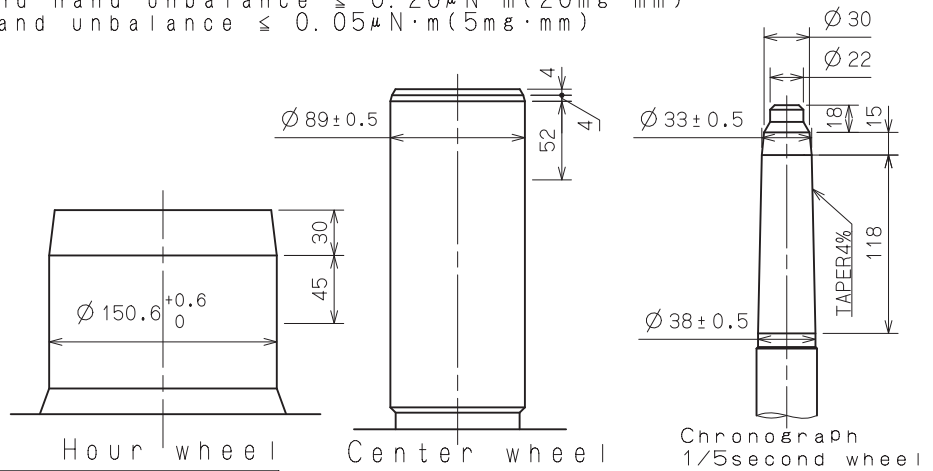
Version : 1



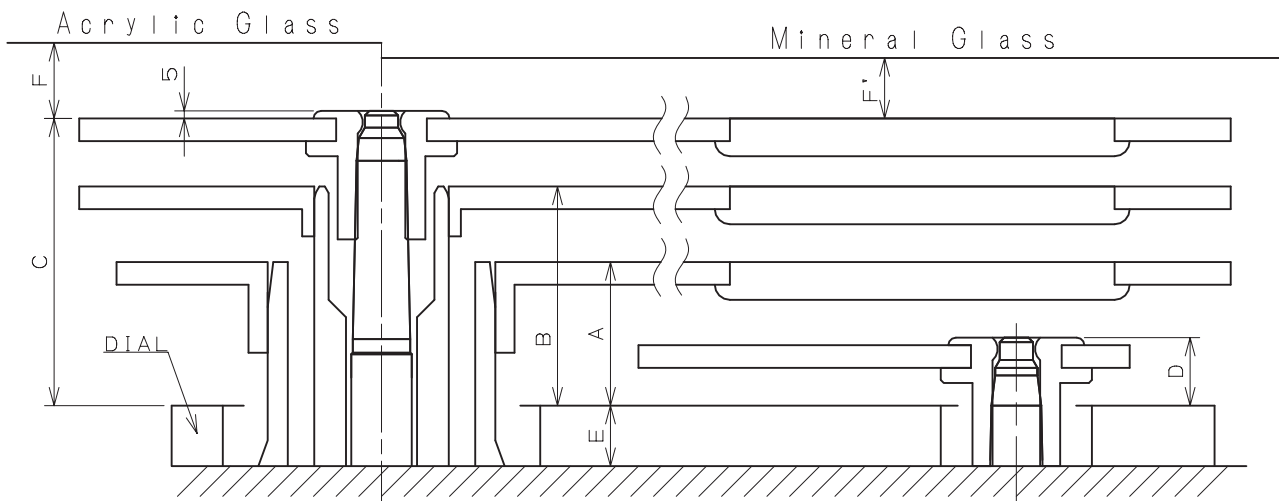
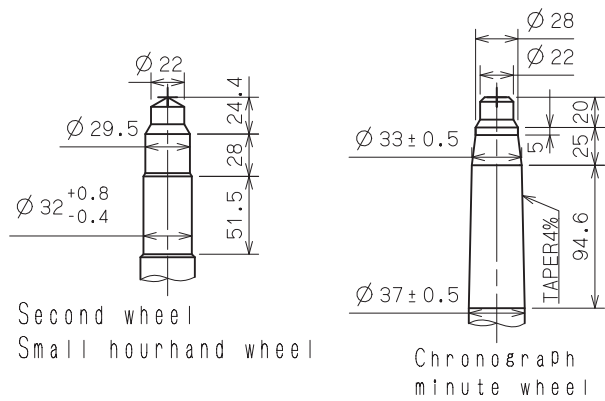
Center post 中心柱位		TYPE M 一般針高	TYPE L 高針
Maximum height from main plate surface 與機芯平面的最大高度	H1	235	280
Total height incl. movement 機芯總高度	H2	825	870



- *Hour hand unbalance $\leq 0.5 \mu\text{N}\cdot\text{m}$ (50mg·mm)
- *Minute hand unbalance $\leq 0.6 \mu\text{N}\cdot\text{m}$ (60mg·mm)
- *Second hand unbalance $\leq 0.05 \mu\text{N}\cdot\text{m}$ (5mg·mm)
- *Small hour hand unbalance $\leq 0.05 \mu\text{N}\cdot\text{m}$ (5mg·mm)
- *Chronograph 1/5 second hand unbalance $\leq 0.20 \mu\text{N}\cdot\text{m}$ (20mg·mm)
- *Chronograph minute hand unbalance $\leq 0.05 \mu\text{N}\cdot\text{m}$ (5mg·mm)

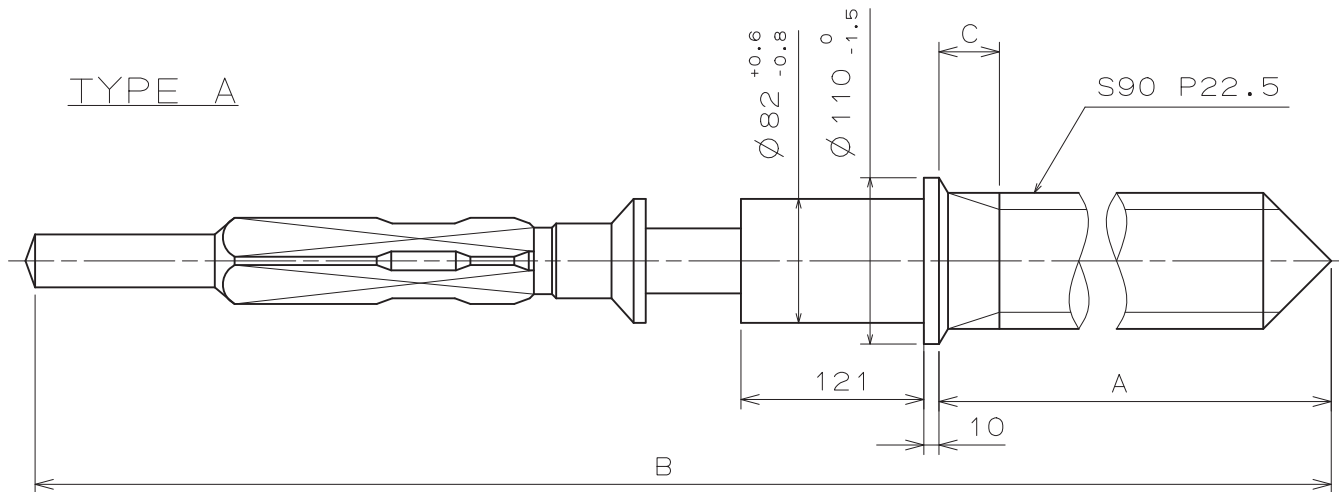


Part name	Part No.	
	TYPE M 一般針高	TYPE L 高針
Hour wheel 時針輪	0273 039	0273 044
Center wheel 分針輪	0221 088	0221 094
Second wheel 秒針輪	0240 020	0240 021
Small hour hand wheel 小時針輪	0157 010	0157 065
Chronograph minute wheel 計時分針輪	0902 019	0902 020
Chronograph 1/5 second wheel 1/5計時秒針輪	0888 030	0888 031

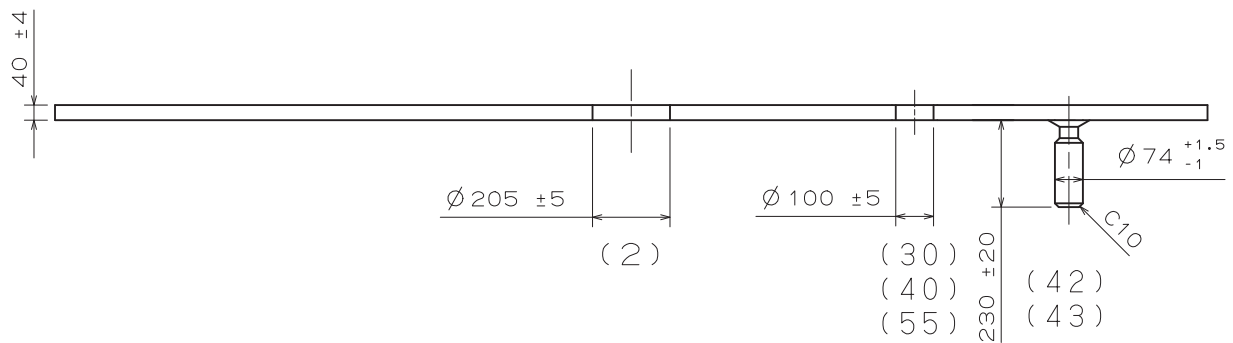
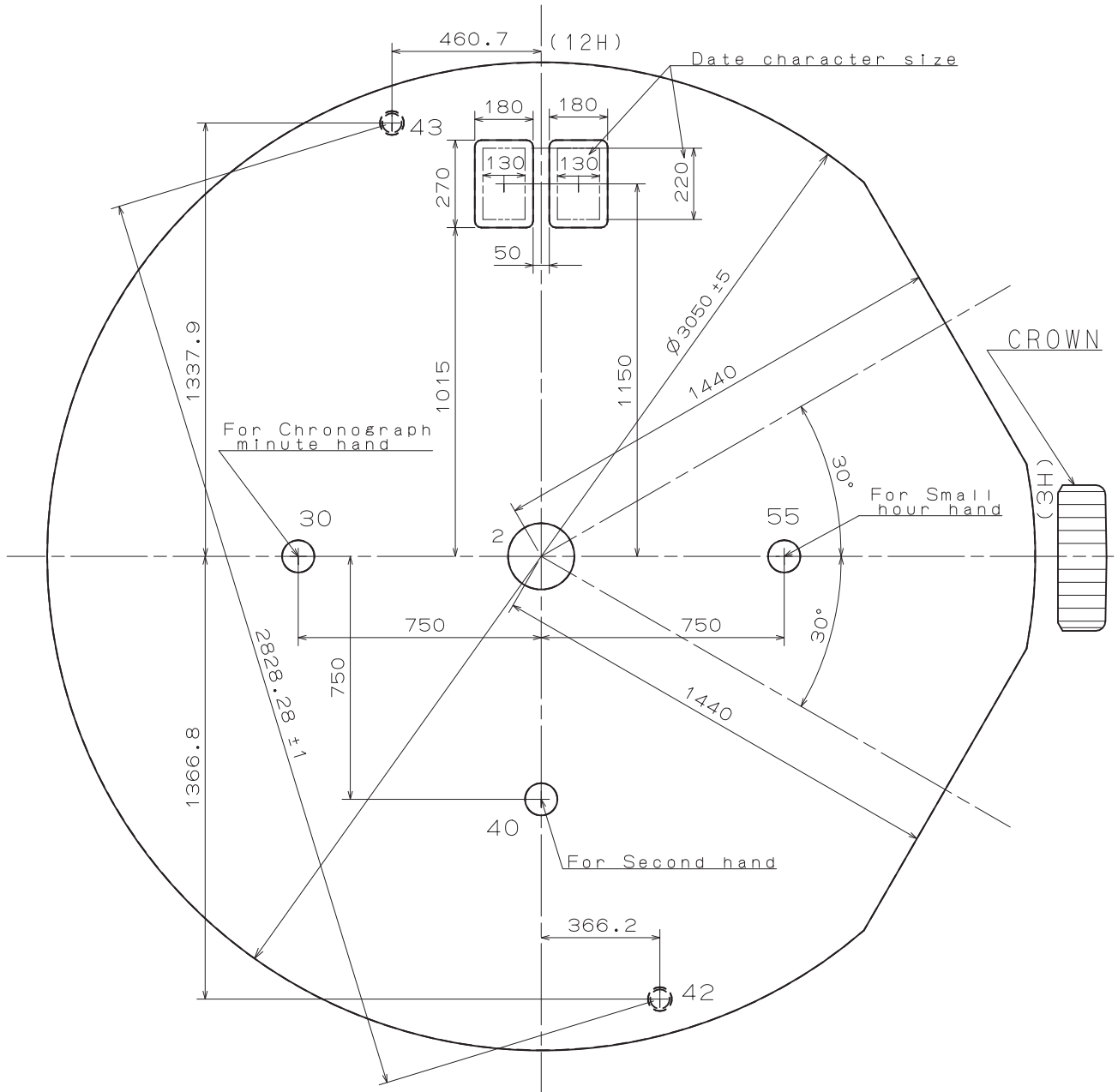


	A	B	C	D	E	F	F'
TYPE M 一般針高	95	145	190	45	40	50	40
TYPE L 高針	95	145	190	45	85	50	40

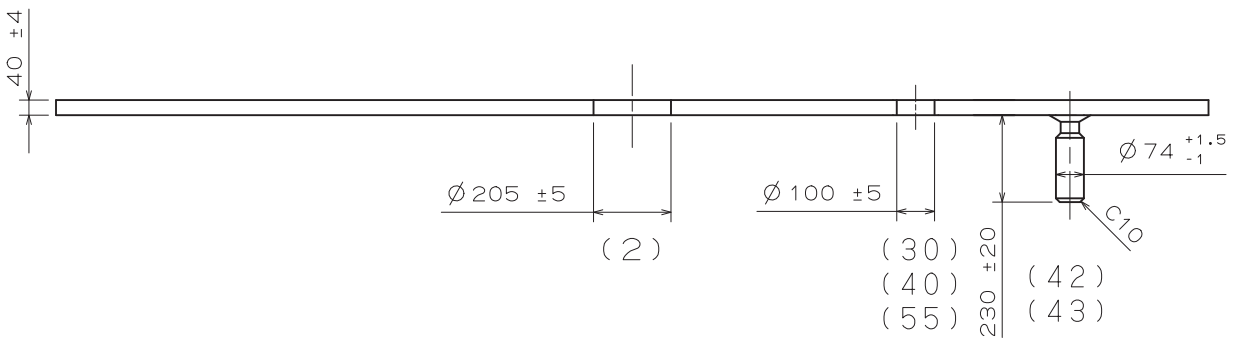
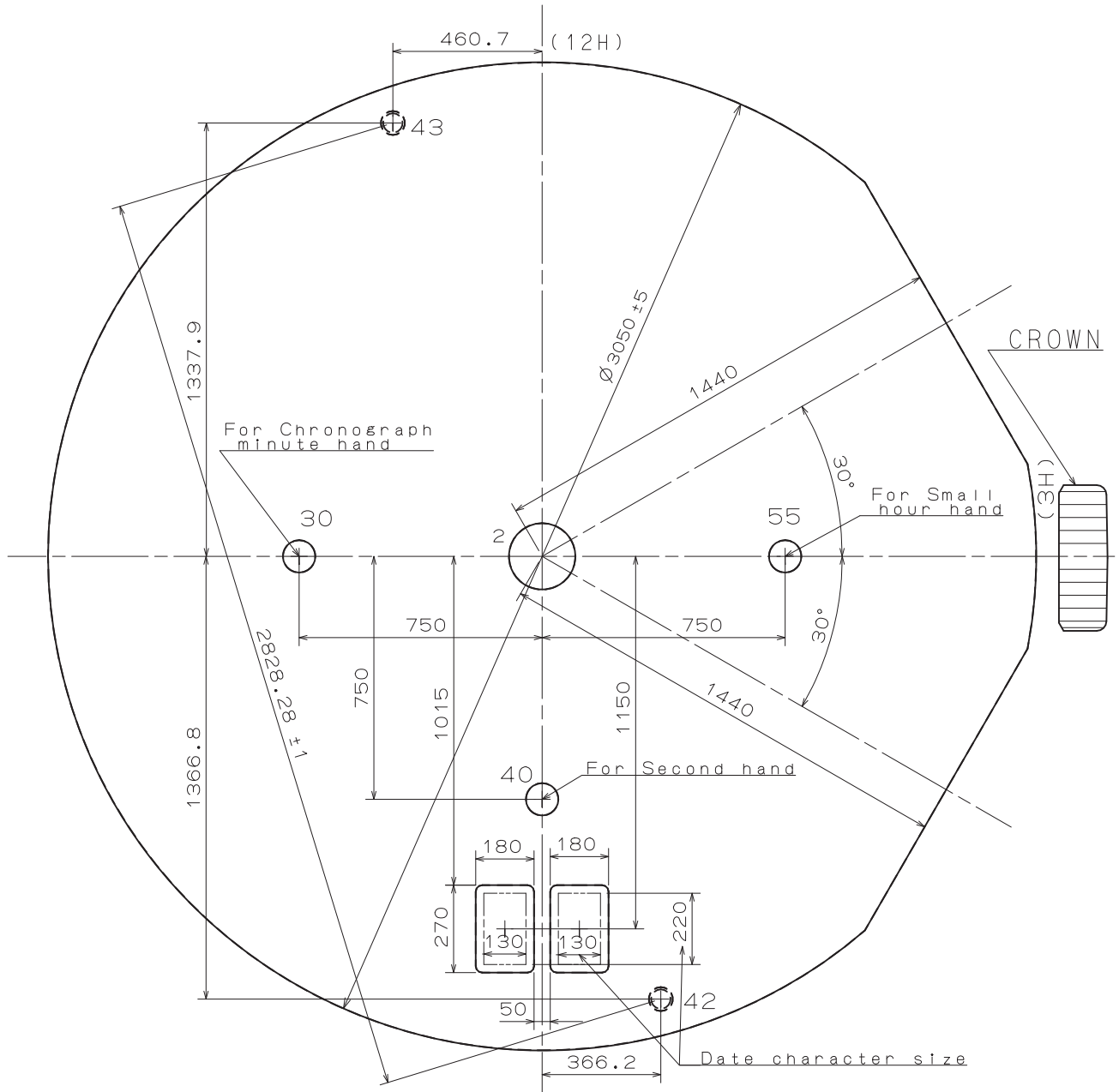
*Do not reuse the chronograph hands once detached.
Please change and use new hands.



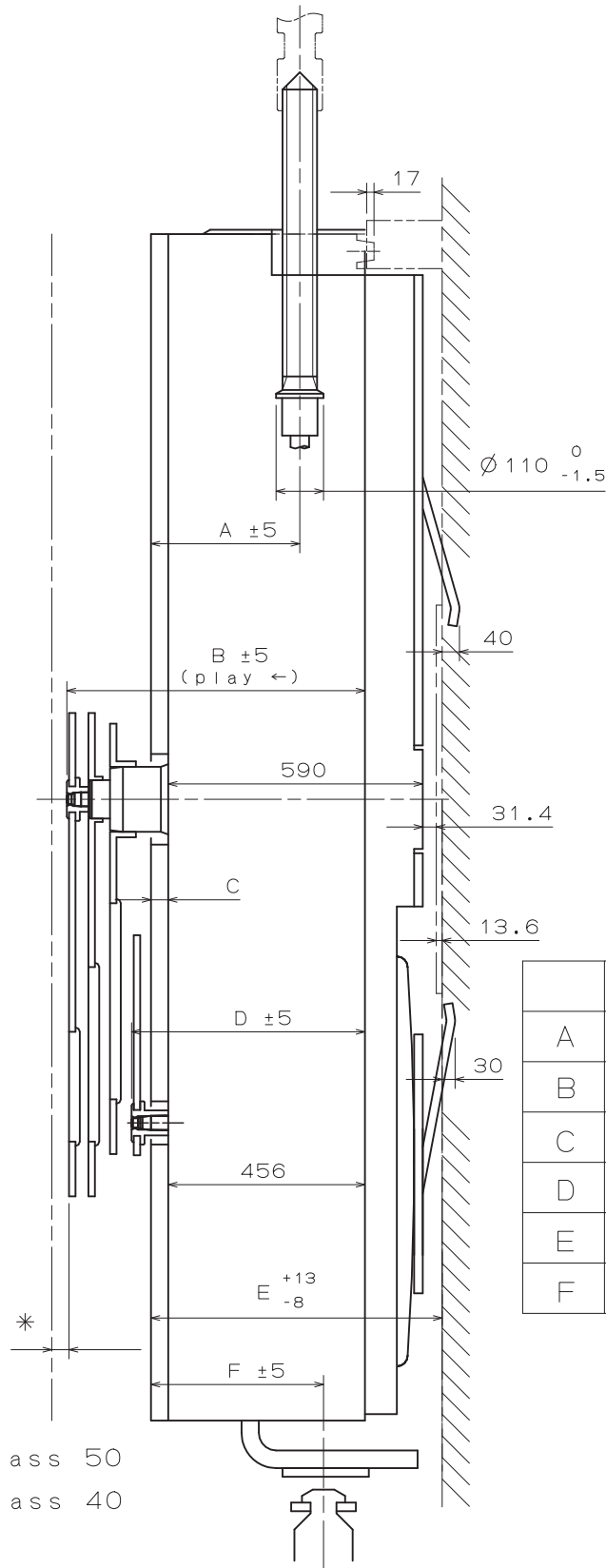
	Part No.	A	B	C
TYPE A	0351 177	1371	1969	40MAX



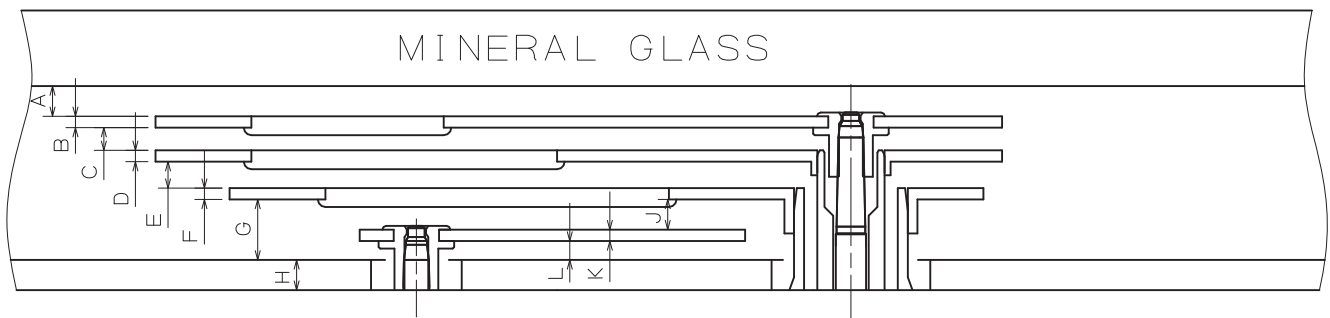
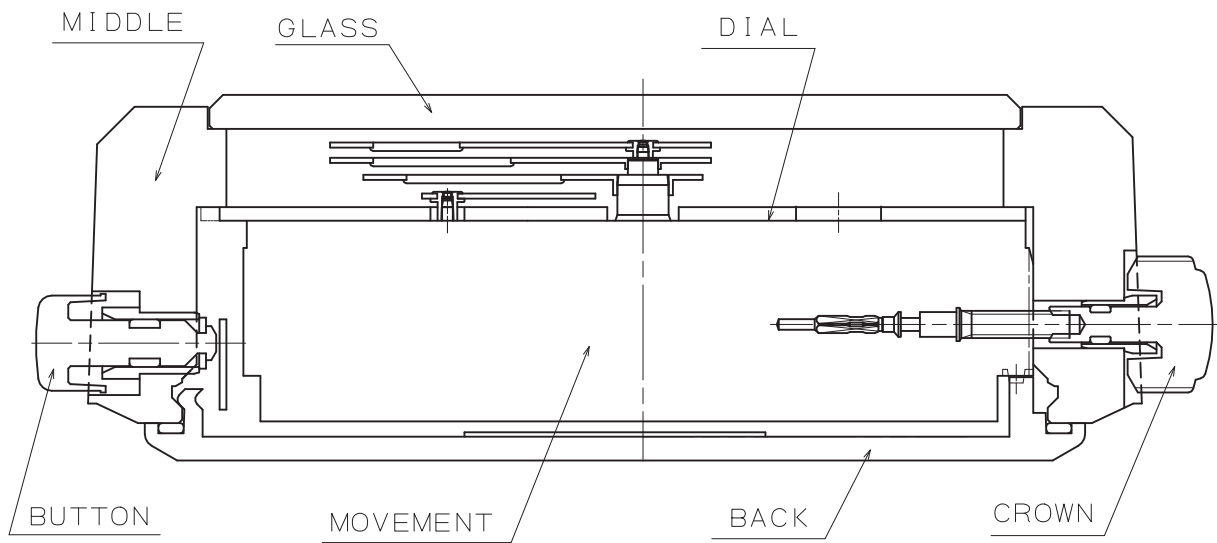
The tolerance of 2# hole position should be under 5 (Standard is 42#-43#)



The tolerance of 2# hole position should be under 5 (Standard is 42#-43#)

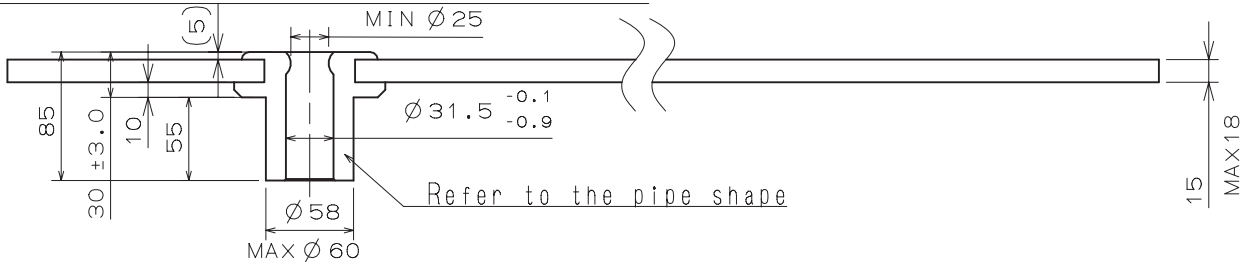


*Acrylic Glass 50
*Mineral Glass 40

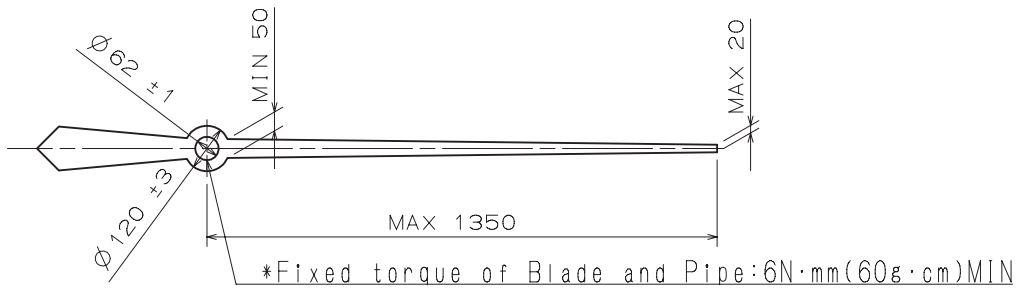


	TYPE M	TYPE L
A	40	40
B	15	15
C	30	30
D	15	15
E	35	35
F	15	15
G	80	80
H	40	85
J	40	40
K	15	15
L	25	25

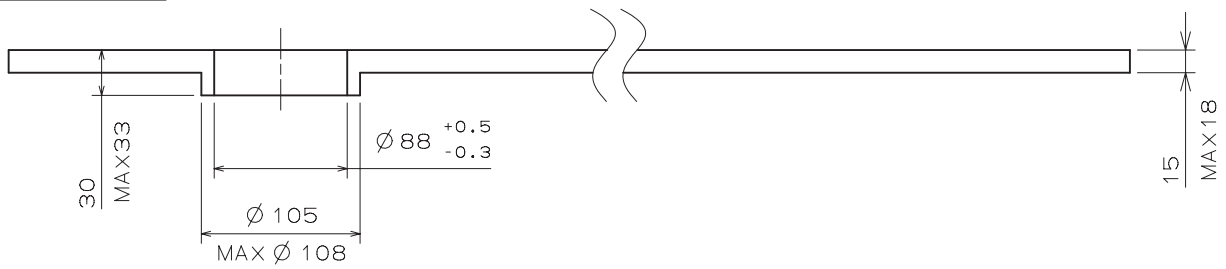
CHRONOGRAPH 1/5 SECOND



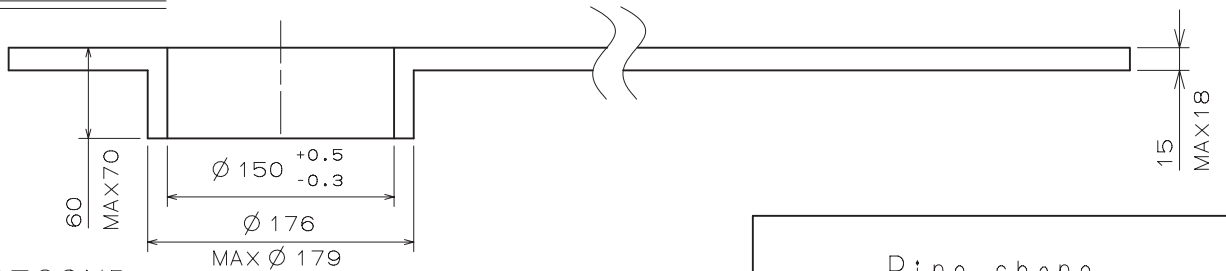
Recommended shape (Straight hand)



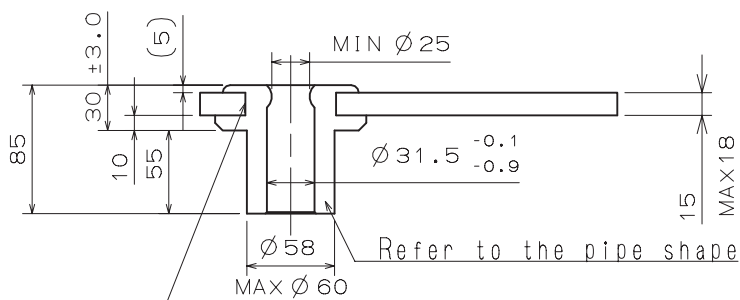
MINUTE



HOUR



SECOND
SMALL HOUR
CHRONOGRAPH MINUTE



*Fixed torque of Blade and Pipe: 6N·mm (60g·cm) MIN

