

## Watch Movement Specification and Drawing

Standard Movement

# PC29A



Movement Size: **6 3/4 × 8'''**  
 Diameter: **Φ18.50mm**  
 Height: **4.15mm**

Items	Ver.	Items	Ver.
Specification	1		
Appearance	1		
Casing	1		
Hand Fitting	1		
Hand Setting Stem	1		
Dial - 1	1		
Dial - 2	1		
Casing Ring	1		
Assembly Plan	1		
Hands	1		

## CAL.PC29A 6<sup>3</sup>/<sub>4</sub> X 8 Ligne Quartz Movement

### Three Hands with Sun & Moon Disk

#### 1. FUNCTION

- Jewel 0 jewel
- Accuracy Less than  $\pm 30$  seconds / month (Normal temperature range)
- Battery life Approx. 3 years
- Regulation hands unbalance
  - Hour hand : Less than  $0.30 \mu\text{N}\cdot\text{m}$  ( 30 mg·mm )
  - Minute hand : Less than  $0.30 \mu\text{N}\cdot\text{m}$  ( 30 mg·mm )
  - Second hand : Less than  $0.07 \mu\text{N}\cdot\text{m}$  ( 7 mg·mm )
- Additional function Sun & Moon display (Synchronized regular hour-hand)

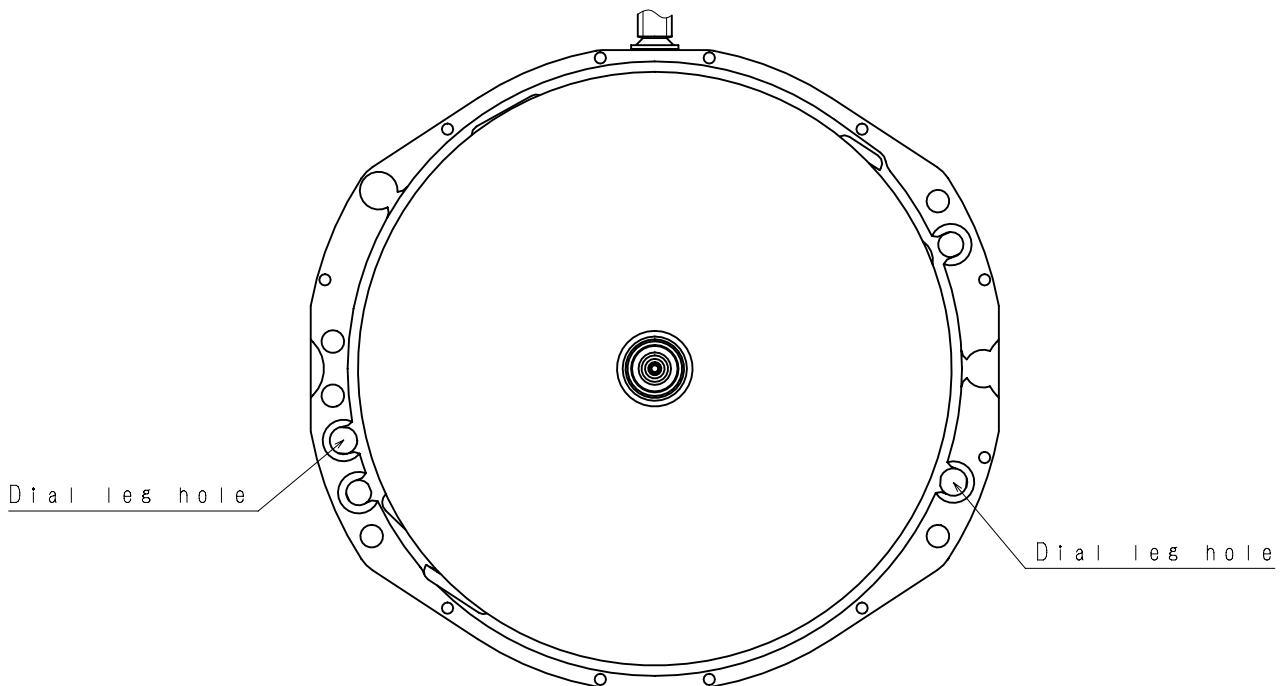
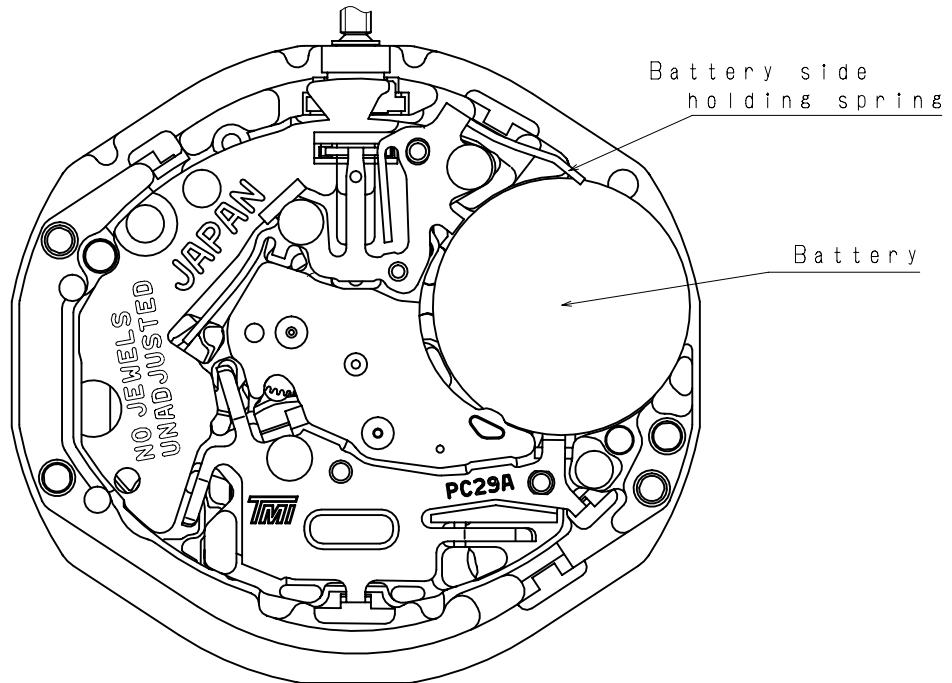
#### 2. USE AND TEST CONDITION

- Battery SR626SW (Recommended battery is SEIZAIKEN)
- Operation temperature range From  $-5\text{ }^{\circ}\text{C}$  to  $+50\text{ }^{\circ}\text{C}$
- Antimagnetic  $\geq 1600\text{ A / m}$  (Direct current magnetic field)
- Test of accuracy 10 seconds (Duration of measurement)

**\* All specifications are subject to change without notice.**

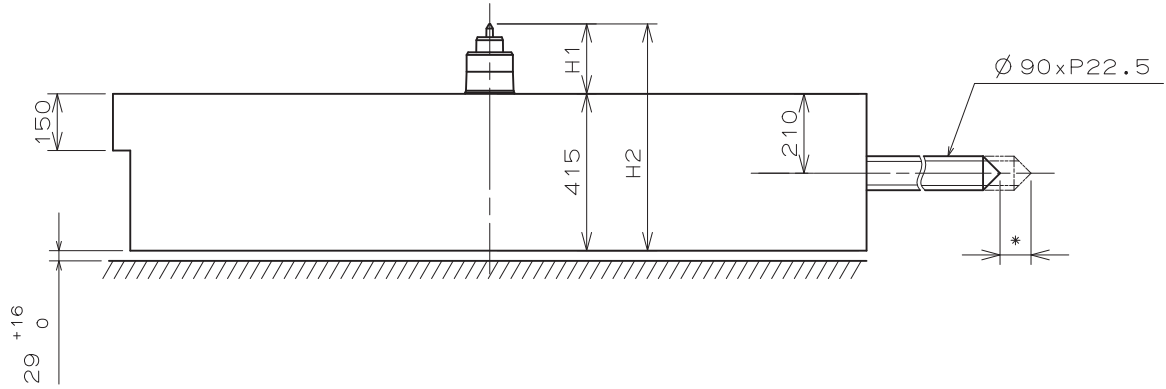
# Appearance

# PC29A

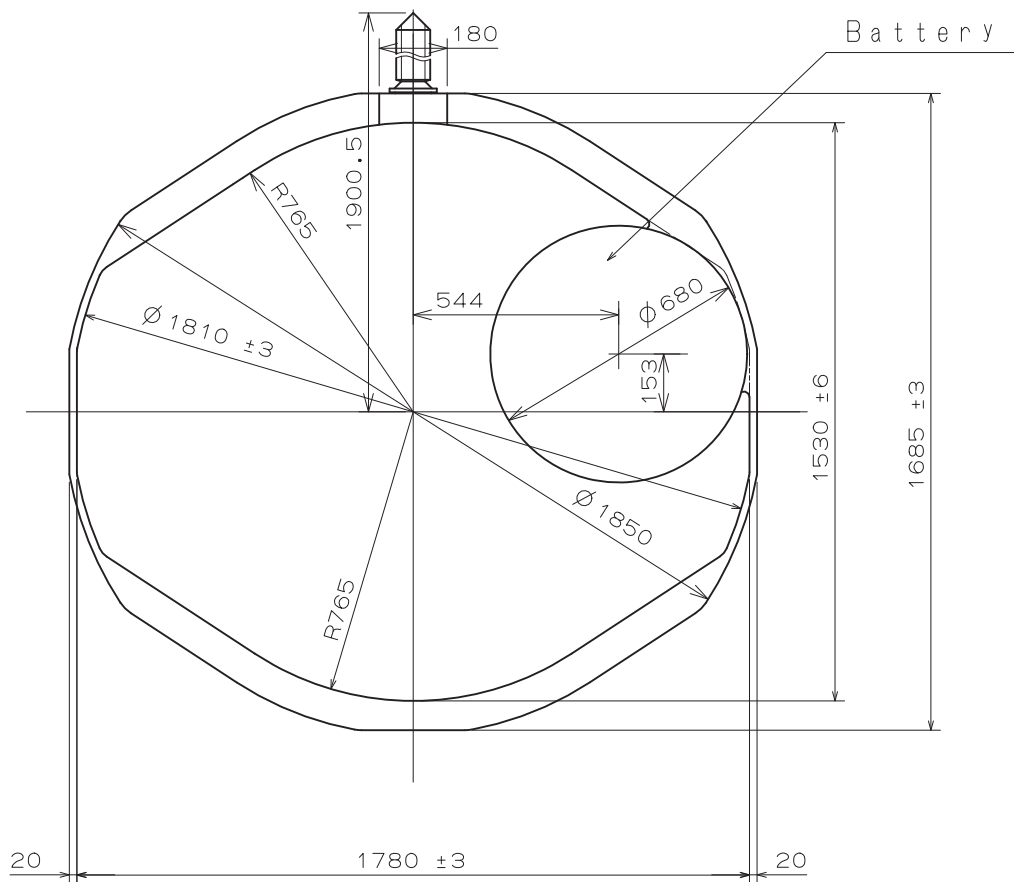


Battery Side Holding Spring Type.

\* First pull out stroke 56



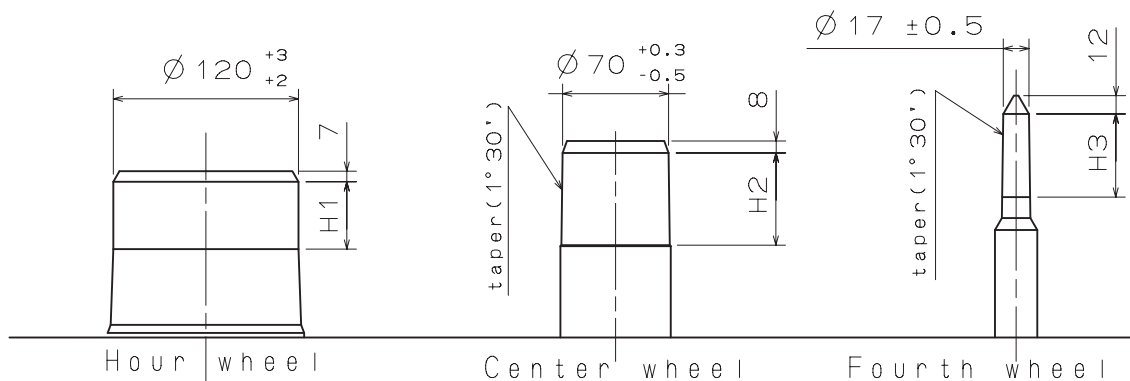
Center post 中心柱位		TYPE M 一般針高
Maximum height from main plate surface 與機芯平面的最大高度	H1	185
Total height incl. movement 機芯總高度	H2	600



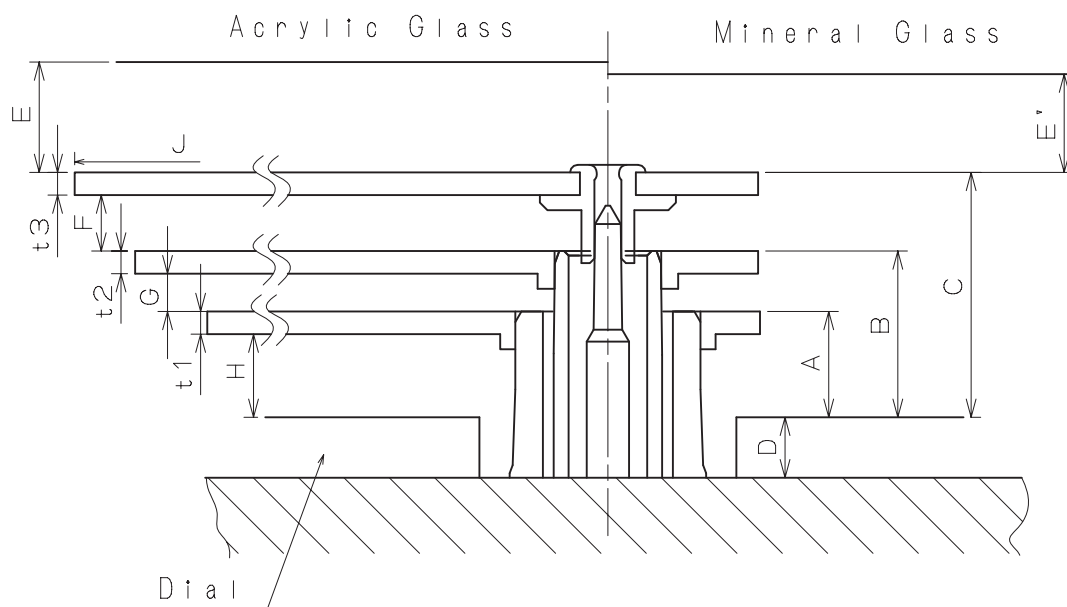
Unit : 1=1/100mm

Version : 1

Hour hand unbalance  $\leq 0.3\mu\text{N}\cdot\text{m}$  (30mg·mm)  
 Minute hand unbalance  $\leq 0.3\mu\text{N}\cdot\text{m}$  (30mg·mm)  
 Second hand unbalance  $\leq 0.07\mu\text{N}\cdot\text{m}$  (7mg·mm)

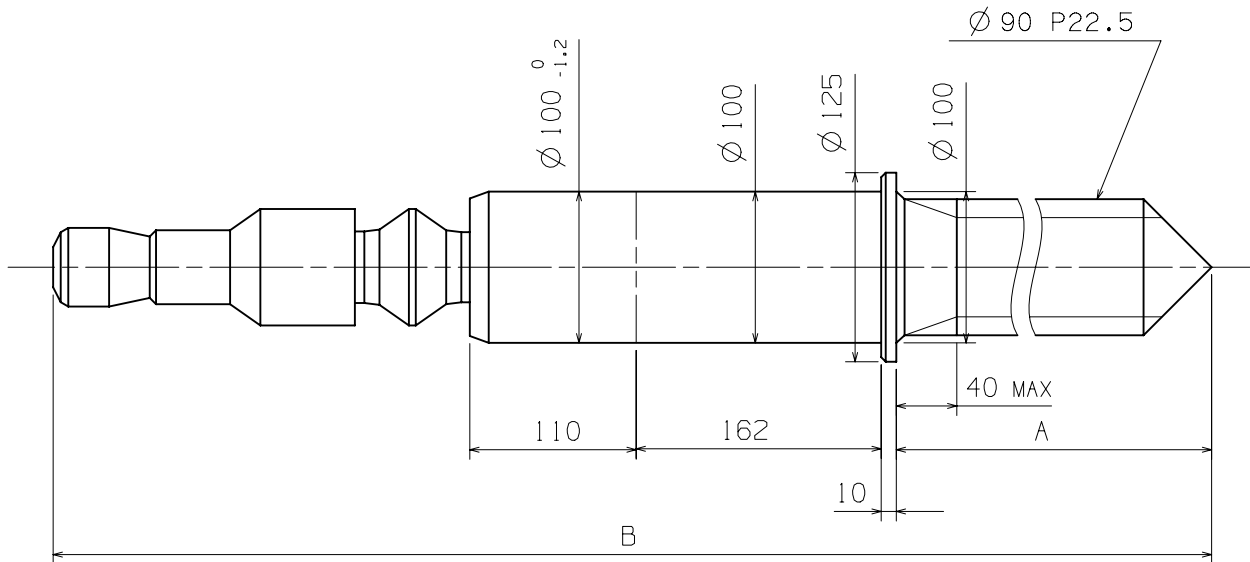


	Part No.			Dimension		
	Hour wheel 時針輪	Center wheel 分針輪	Fourth wheel 秒針輪	H1	H2	H3
TYPE M 一般針高	0271 194	0221 322	0241 310	43	61	55



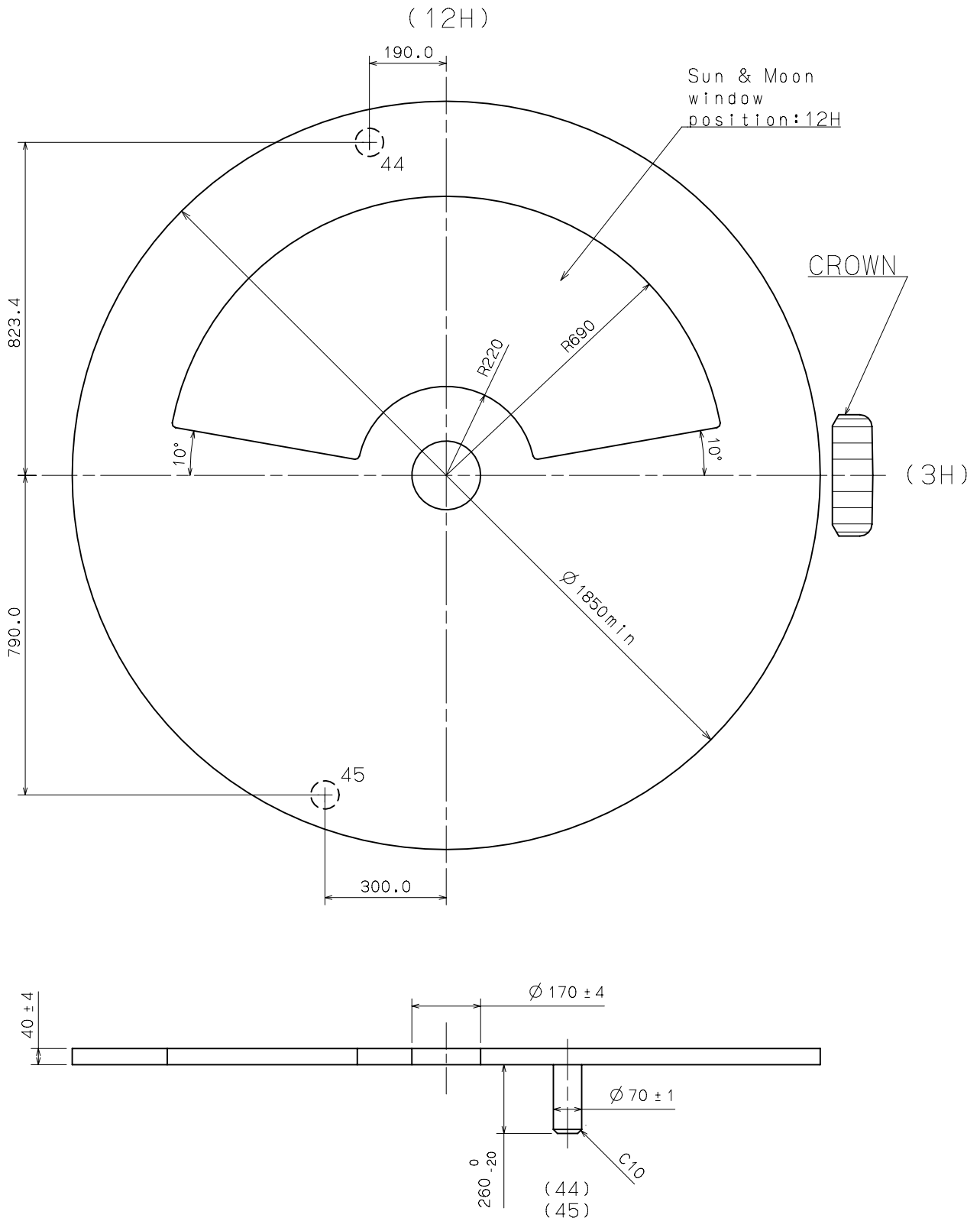
	A	B	C	D	E	E'	F	G	H	t1	t2	t3
TYPE M 一般針高	70	110	162	40	*	*	37	25	55	15	15	15

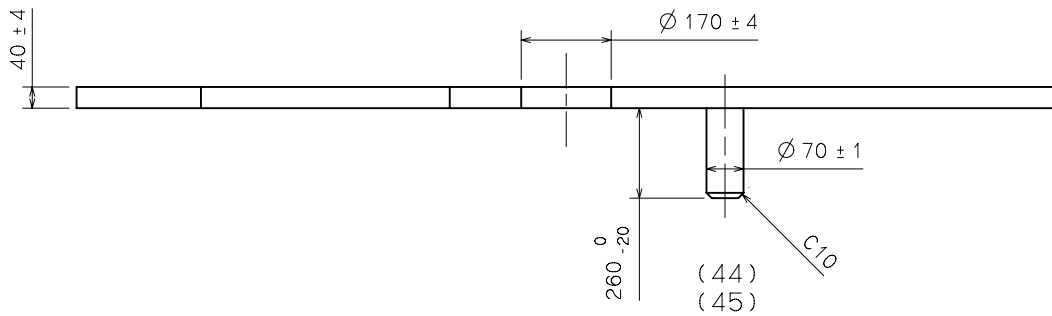
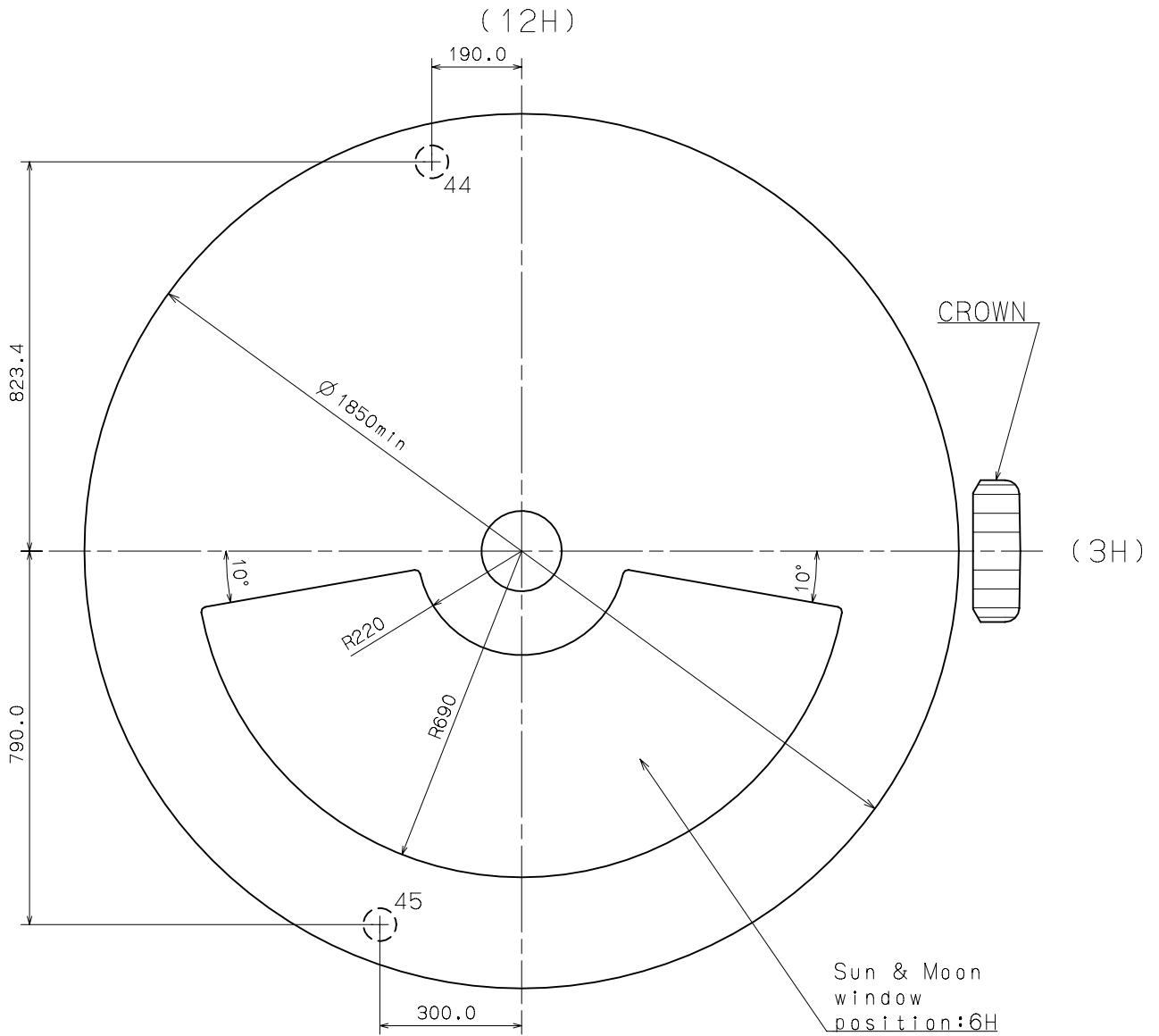
	J		
*	Max 800	800~850	850~
E'	Min 40	Min 45	Min 65
E	Min 48	Min 53	Min 73



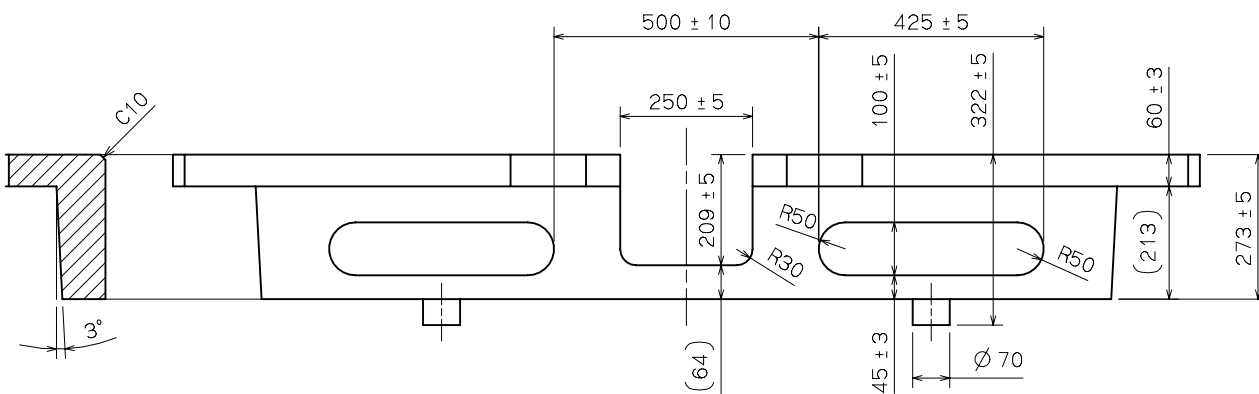
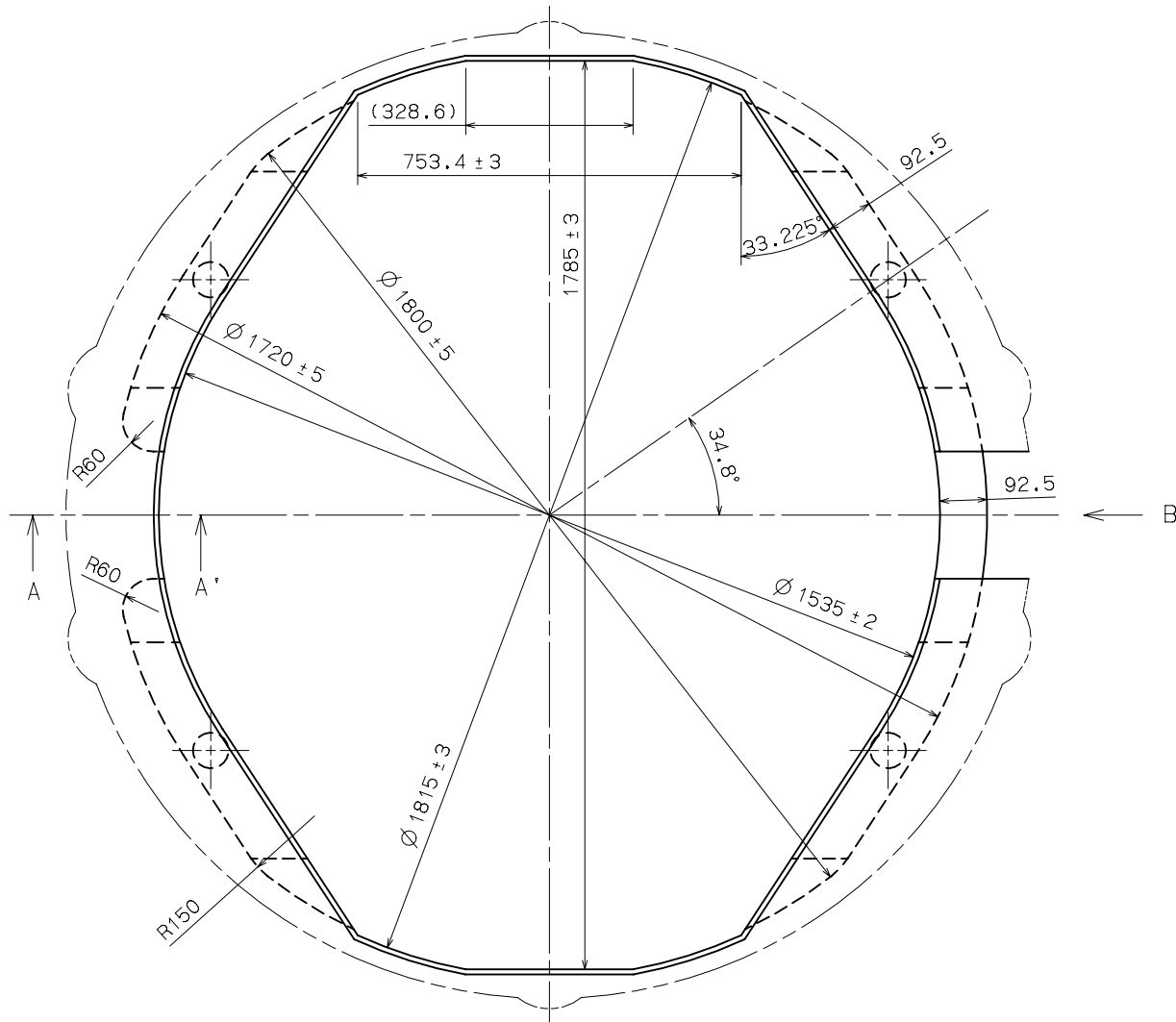
	Part No.	A	B
TYPE A	0354 194	1355	1912.5

Do not lubricate the hand setting stem.







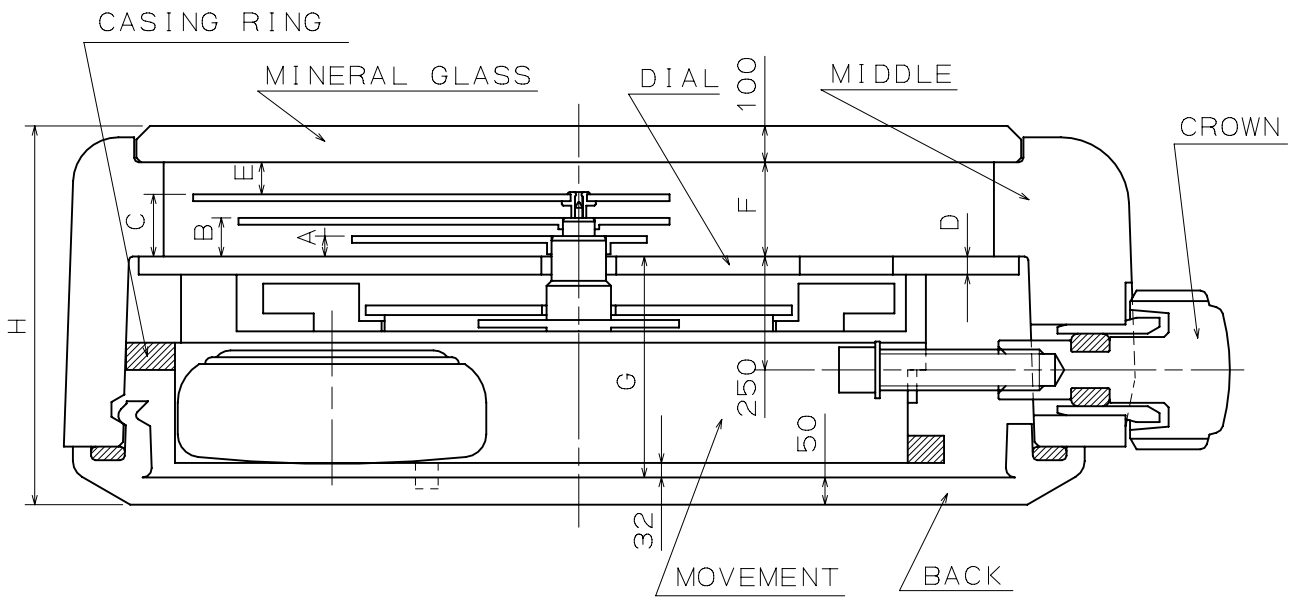


SECTIONAL VIEW of A-A'

SIDE VIEW from B DIRECTION

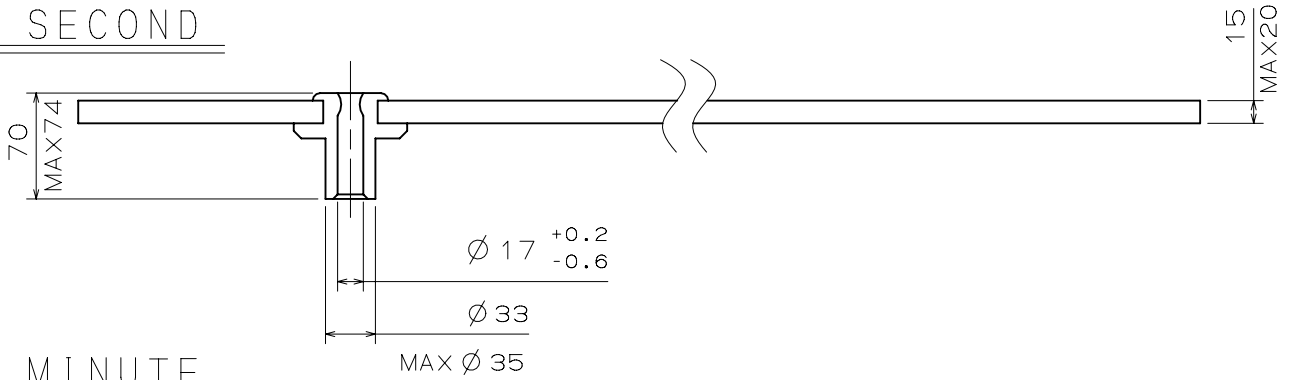
Unit : 1=1/100mm

Version : 1

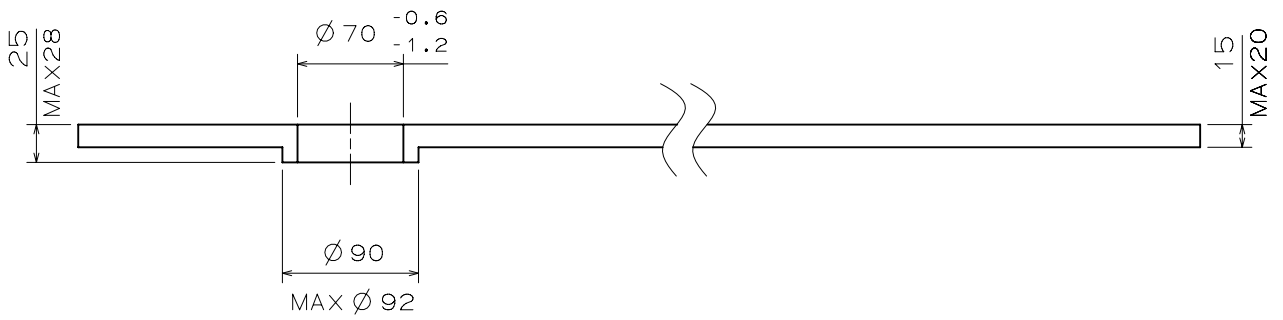


	A	B	C	D	E	F	G	H
TYPE M	70	110	162	40	65	227	487	864

SECOND



MINUTE



HOUR

