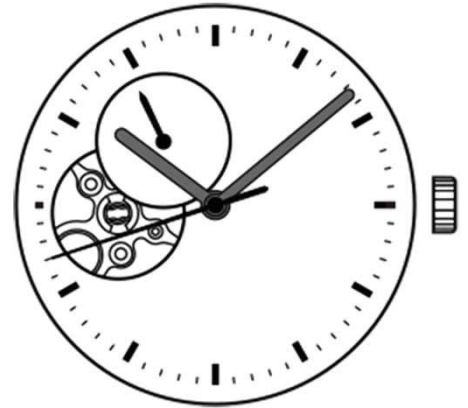


Watch Movement Specification and Drawing

Basic Mechanical Movement

NH39A



Movement Size: **12'''**
 Diameter: **Φ27.40mm** (Φ29.36mm with Dial Holding Spacer)
 Height: **5.32mm**

Items	Ver.	Items	Ver.
Specification	1		
Appearance - 1	1		
Appearance - 2	1		
Casing	1		
Hand Fitting	1		
Hand Setting Stem	1		
Dial	1		
Assembly Plan	1		
Hands	1		

CAL.NH39A 12 Ligne Mechanical Movement

Three Hands with 1 Eye Small 24 Hour Indicator Hand

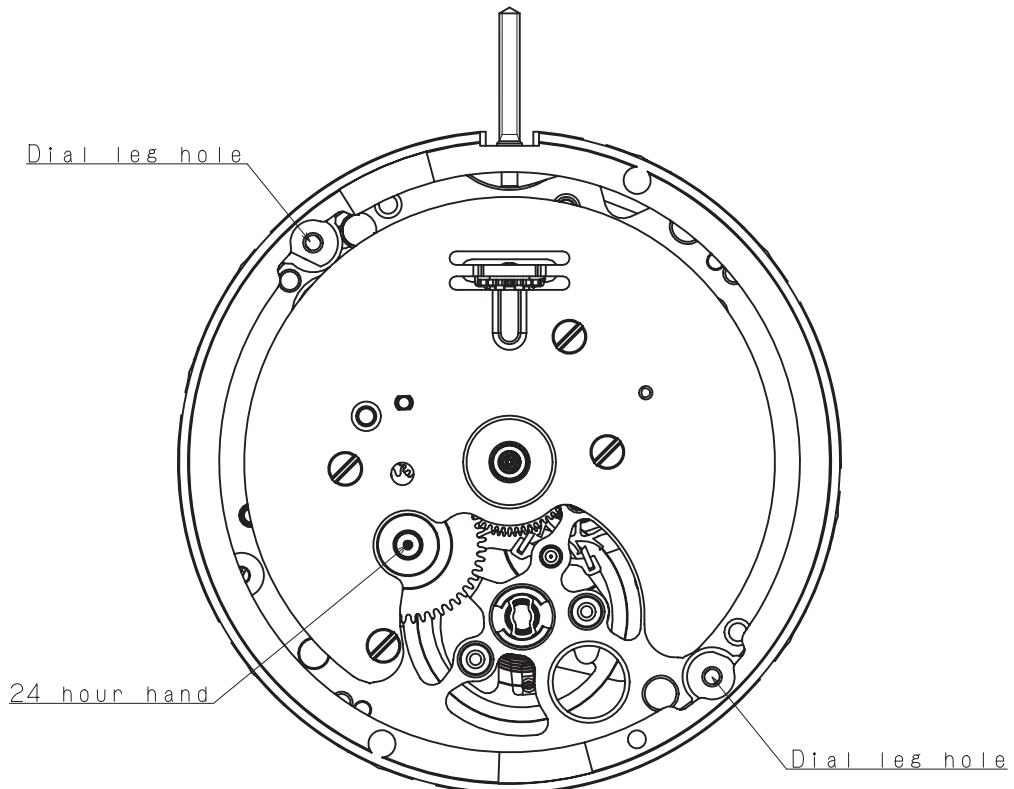
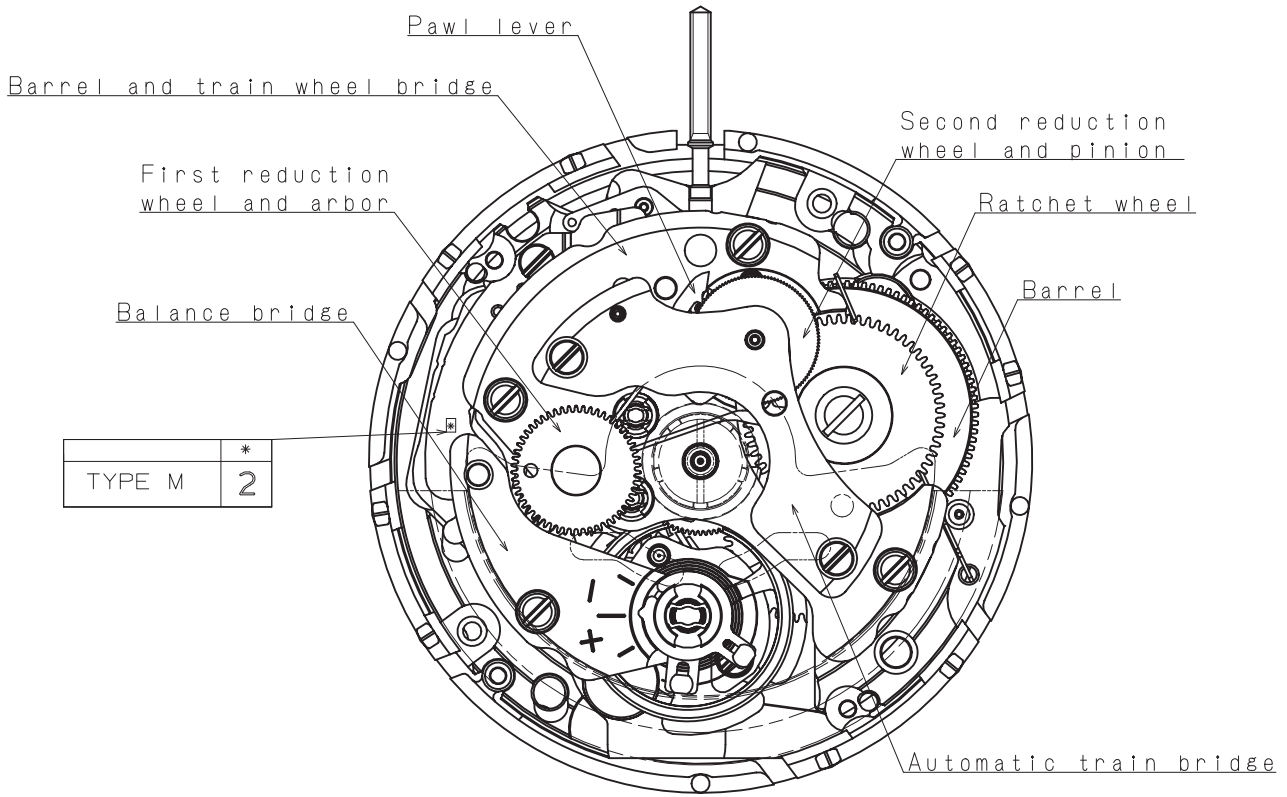
1. FUNCTION

- Jewel 24 jewels
- Accuracy -20 ~ +40 seconds / day (23 ± 2 °C)
- Regulation hands unbalance
 - Hour hand : Less than 1.50 $\mu\text{N}\cdot\text{m}$ (150 mg·mm)
 - Minute hand : Less than 1.25 $\mu\text{N}\cdot\text{m}$ (125 mg·mm)
 - Second hand : Less than 0.60 $\mu\text{N}\cdot\text{m}$ (60 mg·mm)
 - Small 24 hour indicator hand : Less than 0.05 $\mu\text{N}\cdot\text{m}$ (5 mg·mm)
- Additional function
 - Manual winding
 - Automatic winding with ball bearing
 - Both winding with one way clutch
 - Second hand stop mechanism
 - 24 hour indicator (Synchronized regular hour hand)

2. USE AND TEST CONDITION

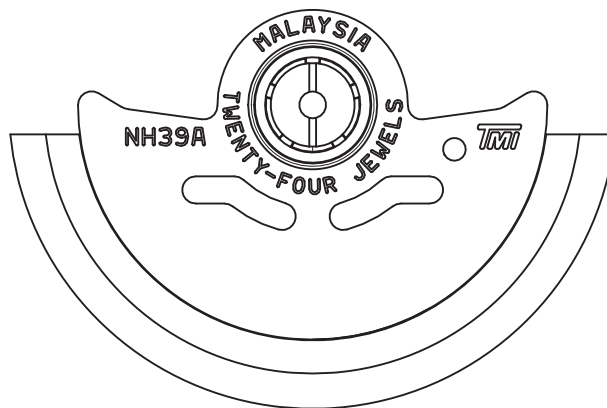
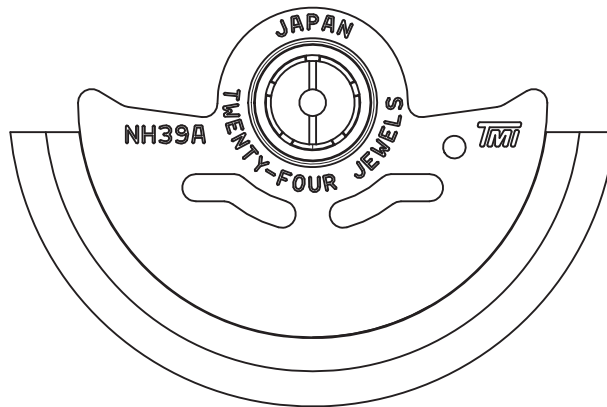
- Vibration frequency 21,600 vibrations per hour
- Duration time More than 41 hours
- Antimagnetic ≥ 4800 A / m (Direct current magnetic field)
- Test of accuracy 20 seconds (Duration of measurement)
- Casing
 - *1. Screw type case back is required
 - *2. Non-corresponding with Diver's watch

*** All specifications are subject to change without notice.**

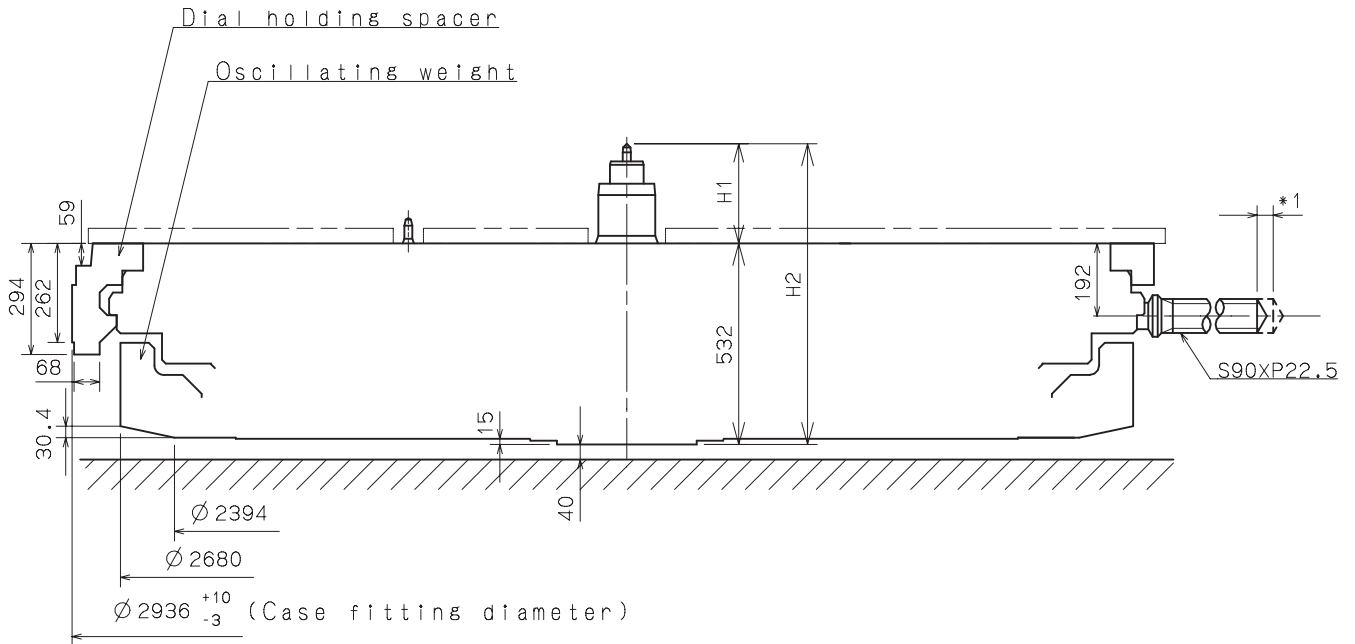


Oscillating weight

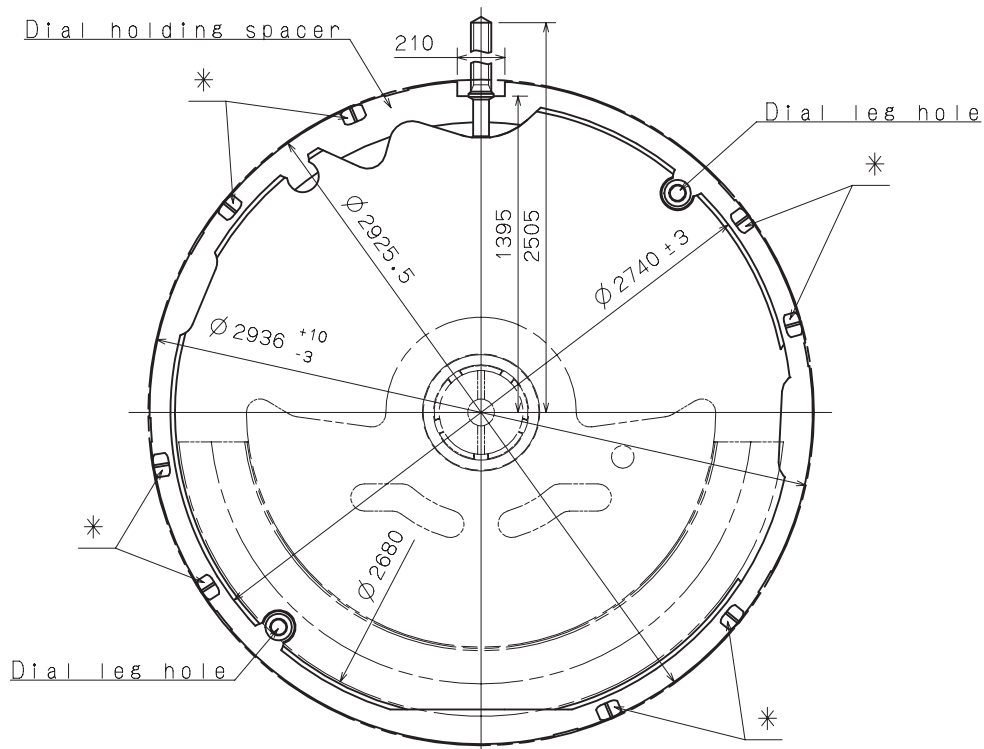
Marking	Country of origin
JAPAN	JAPAN
MALAYSIA	MALAYSIA



*1. Pull out stroke 42.7



Center post 中心柱位		TYPE M 一般針高
Maximum height from main plate surface 與機芯平面的最大高度	H1	266.7
Total height incl. movement 機芯總高度	H2	798.7

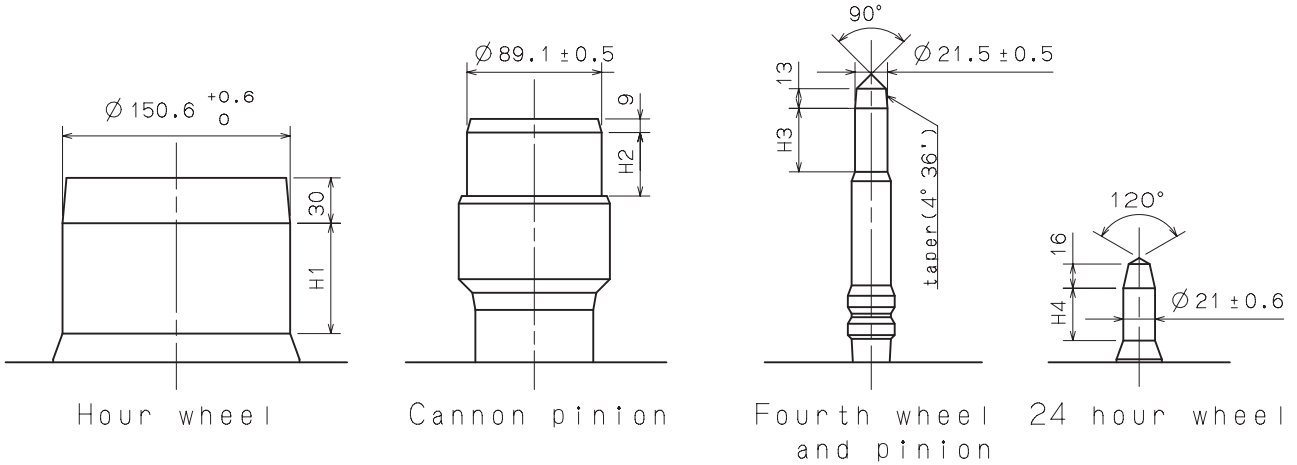


*Projection to fix movement to case.

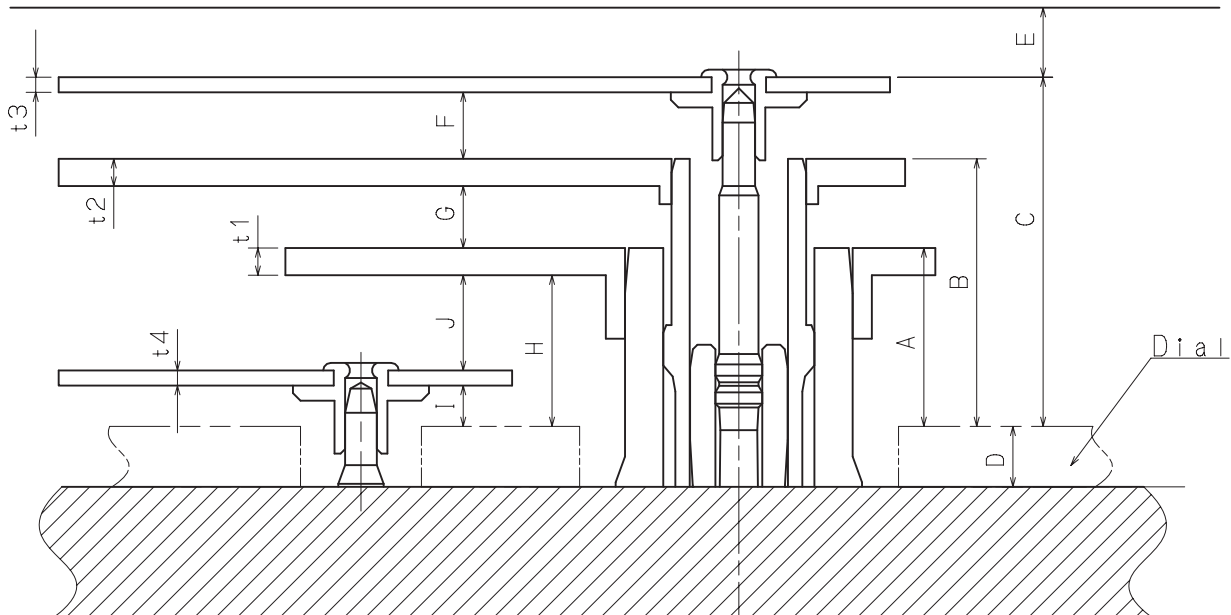
Unit : 1=1/100mm

Version : 1

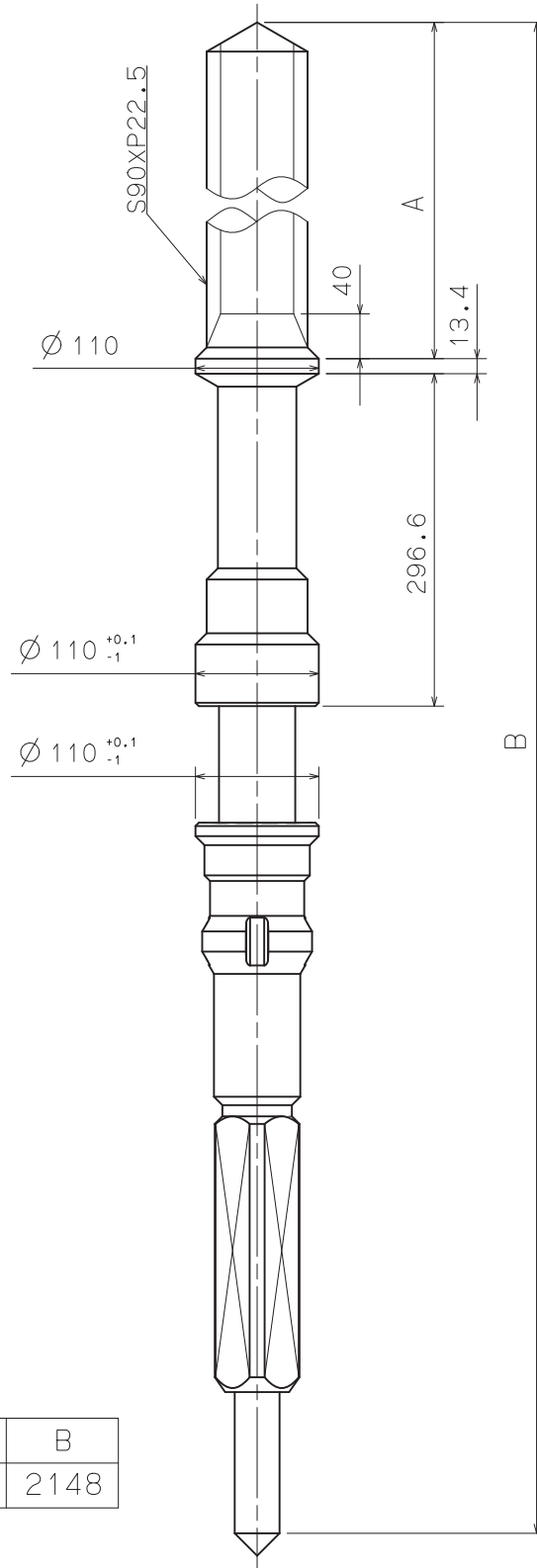
Hour hand unbalance $\leq 1.50\mu\text{N}\cdot\text{m}$ (150mg·mm)
 Minute hand unbalance $\leq 1.25\mu\text{N}\cdot\text{m}$ (125mg·mm)
 Second hand unbalance $\leq 0.60\mu\text{N}\cdot\text{m}$ (60mg·mm)
 24 hour hand unbalance $\leq 0.05\mu\text{N}\cdot\text{m}$ (5mg·mm)



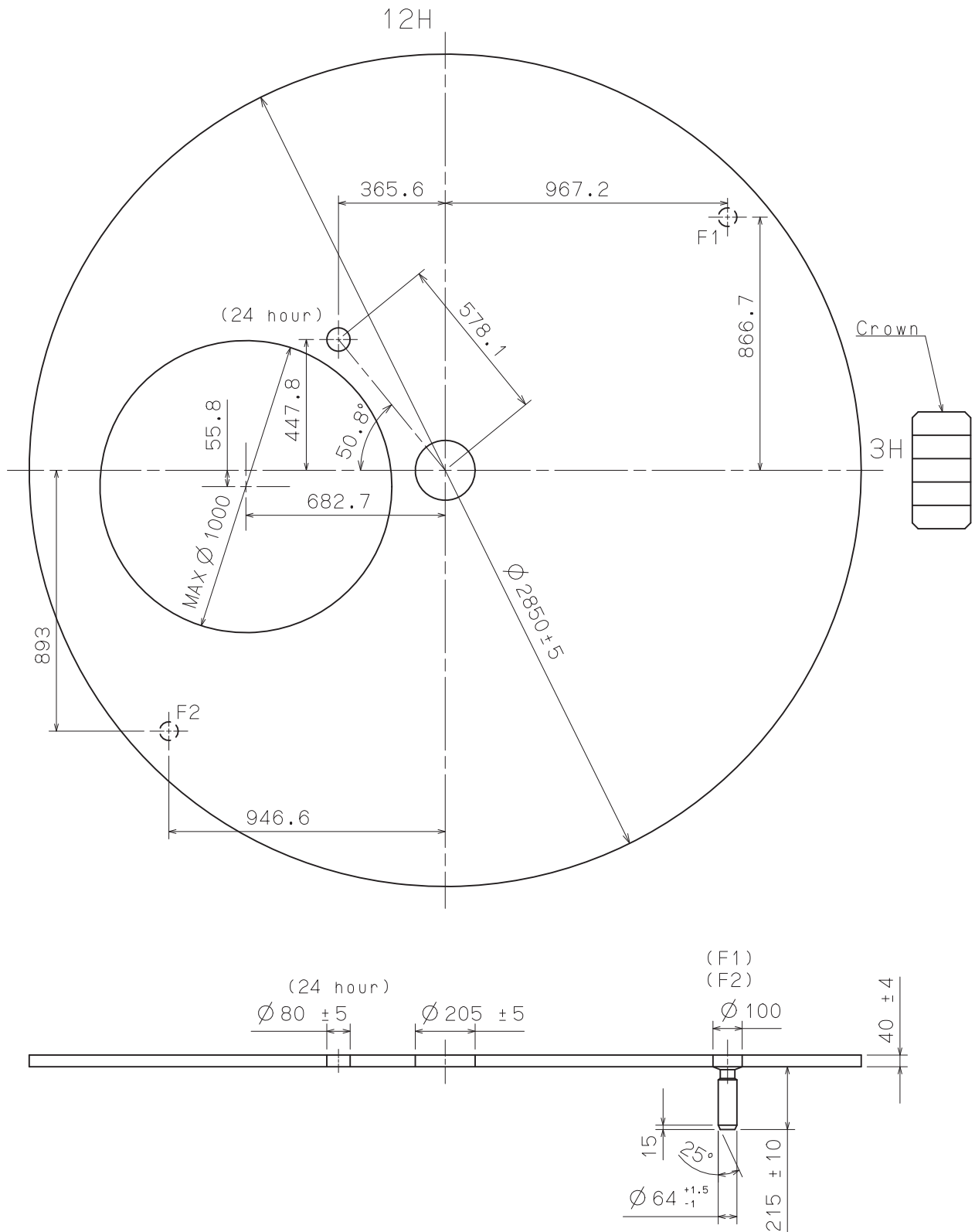
	Part No.				Dimension			
	Hour wheel 時針輪	Cannon pinion 分針輪(十反)	Fourth wheel and pinion 秒針輪	24hour wheel 24小時針輪	H1	H2	H3	H4
TYPE M 一般針高	0273 185	0225 426	0144 185	0157 184	108	61	42	34.6



	A	B	C	D	E	F	G	H	I	J	t1	t2	t3	t4
TYPE M 一般針高	118	177	231	40	45	44	41	100	27	63	18	18	10	10

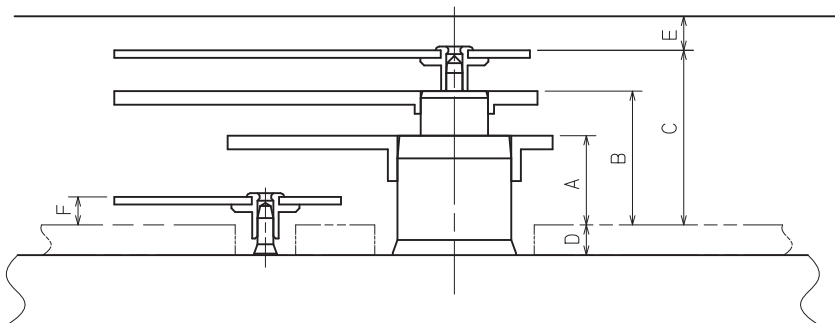
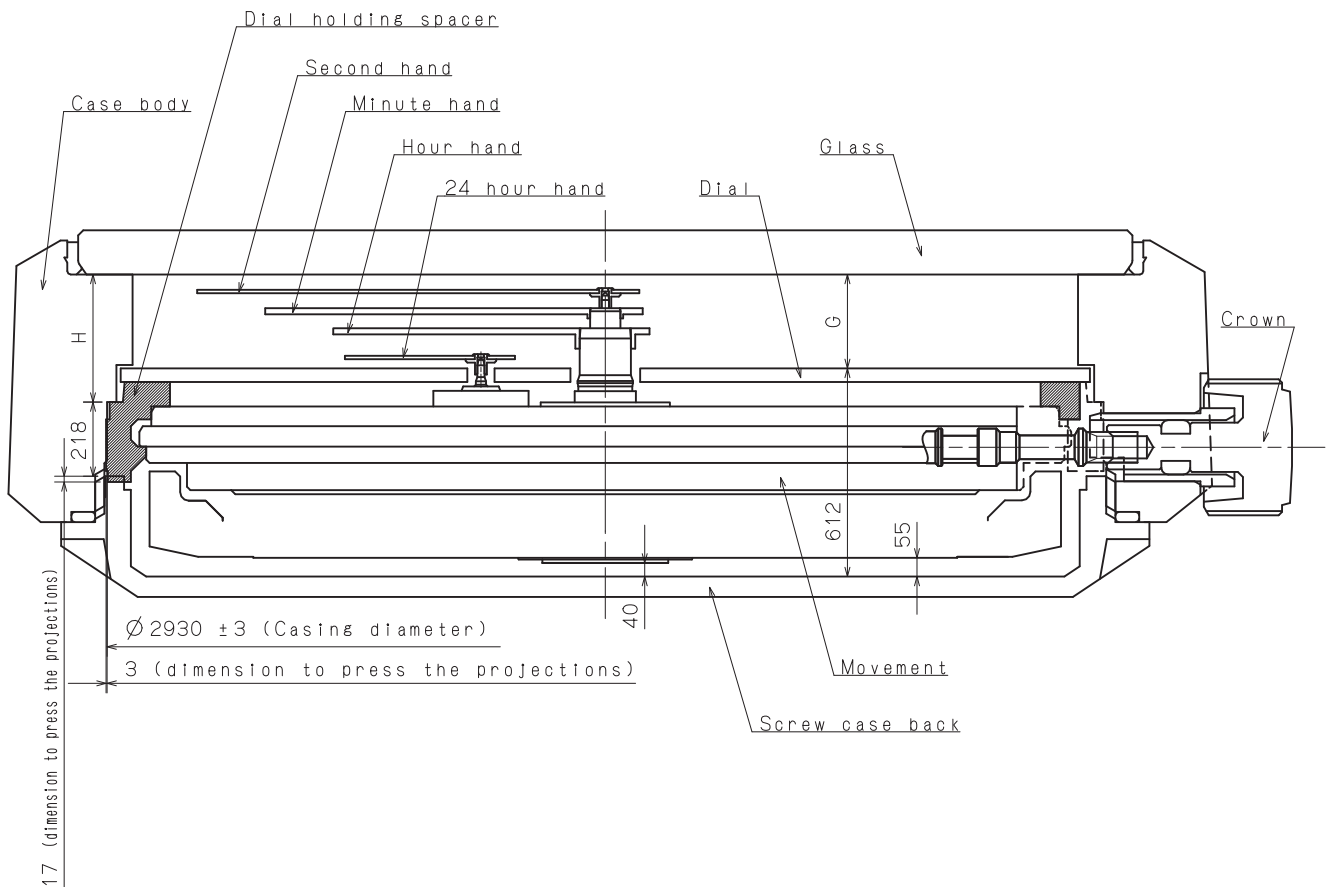


Part No.	A	B
0351 200	1100	2148



Assembly Plan

NH39A

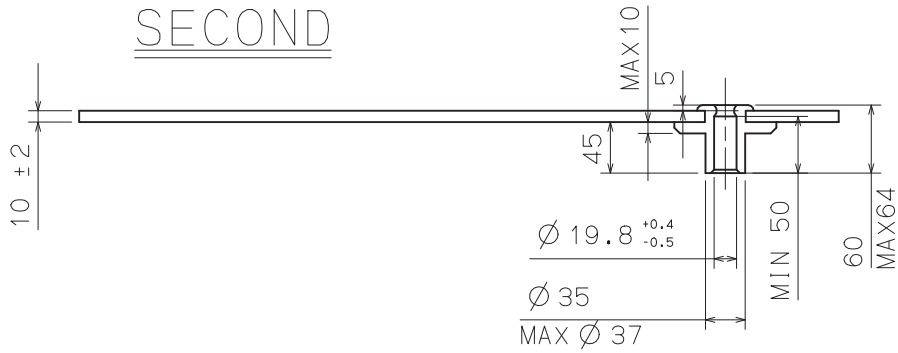


	A	B	C	D	E	F	G	H
TYPE M	118	177	231	40	45	37	276	375

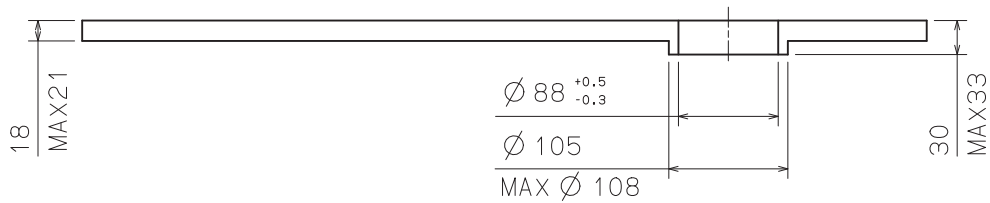
Unit : 1=1/100mm

Version : 1

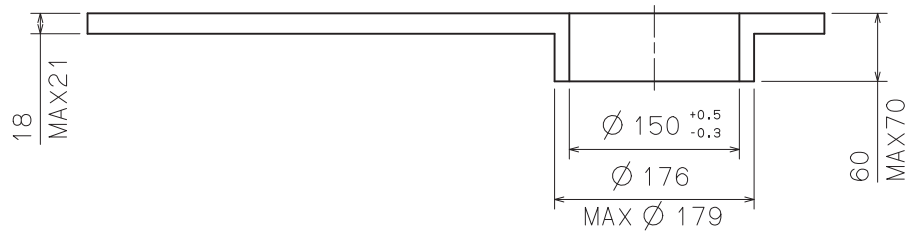
SECOND



MINUTE



HOUR



24 HOUR

