

Watch Movement Specification and Drawing

Sweep Second Multi-Eye

VH63A



Movement Size: **10 1/2"**
 Diameter: **Φ23.70mm**
 Height: **3.45mm**

Items	Ver.	Items	Ver.
Specification	1		
Appearance	1		
Casing	1		
Hand Fitting - 1	1		
Hand Fitting - 2	1		
Hand Setting Stem	1		
Dial	1		
Casing Ring	1		
Assembly Plan - 1	1		
Assembly Plan - 2	1		
Hands (For TYPE S)	1		
Hands (For TYPE M / L)	1		
Hands (For TYPE LA)	1		

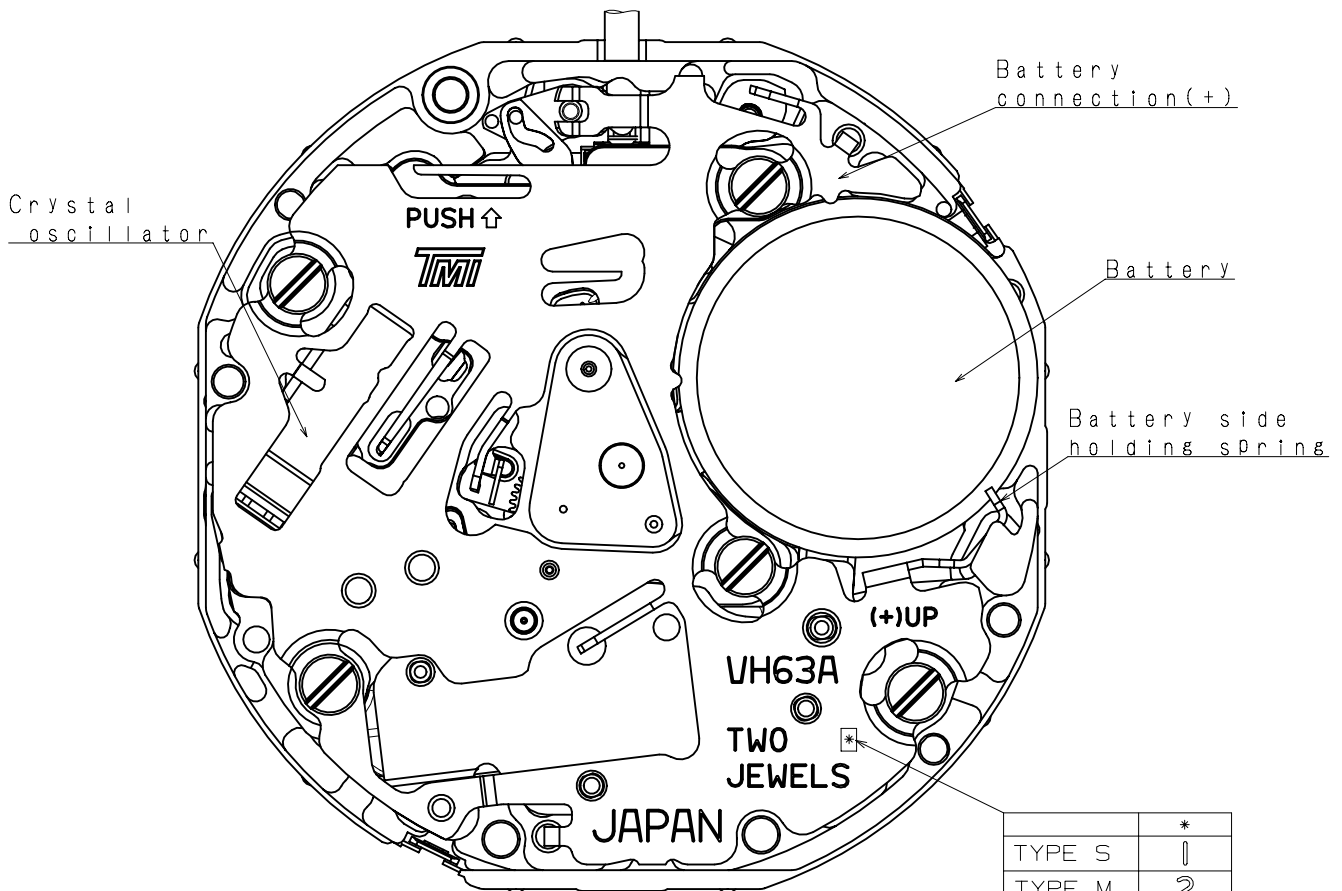
CAL.VH63A 10½ Ligne Quartz Movement**Three Hands (1/4 Center Second Hand) with 3 eyes
Small 24 Hour Indicator, Date & Day Hands****1. FUNCTION**

- Jewel 2 jewels
- Accuracy Less than ± 15 seconds / month (Normal temperature range)
- Battery life Approx. 2 years
- Regulation hands unbalance
 - Hour hand : Less than $0.50 \mu\text{N}\cdot\text{m}$ (50 mg·mm)
 - Minute hand : Less than $0.80 \mu\text{N}\cdot\text{m}$ (80 mg·mm)
 - Second hand : Less than $0.30 \mu\text{N}\cdot\text{m}$ (30 mg·mm)
 - Small hands : Less than $0.10 \mu\text{N}\cdot\text{m}$ (10 mg·mm)(Date, day & 24 hour indicator hands)
- The moment of inertia (For Type LA) Small hands : Less than $260 \text{ mg}\cdot\text{mm}^2$
(Date, day & 24 hour disc hands)
- Additional function Date & Day display with quick date correction
24 hour indicator (Synchronized regular hour hand)

2. USE AND TEST CONDITION

- Battery SR920SW (Recommended battery is SEIZAIKEN)
- Operation temperature range From $- 5 \text{ }^\circ\text{C}$ to $+ 50 \text{ }^\circ\text{C}$
- Antimagnetic $\geq 1600 \text{ A / m}$ (Direct current magnetic field)
- Test of accuracy 10 seconds (Duration of measurement)

*** All specifications are subject to change without notice.**



	*
TYPE S	1
TYPE M	2
TYPE L	3
TYPE LA	A

Date star

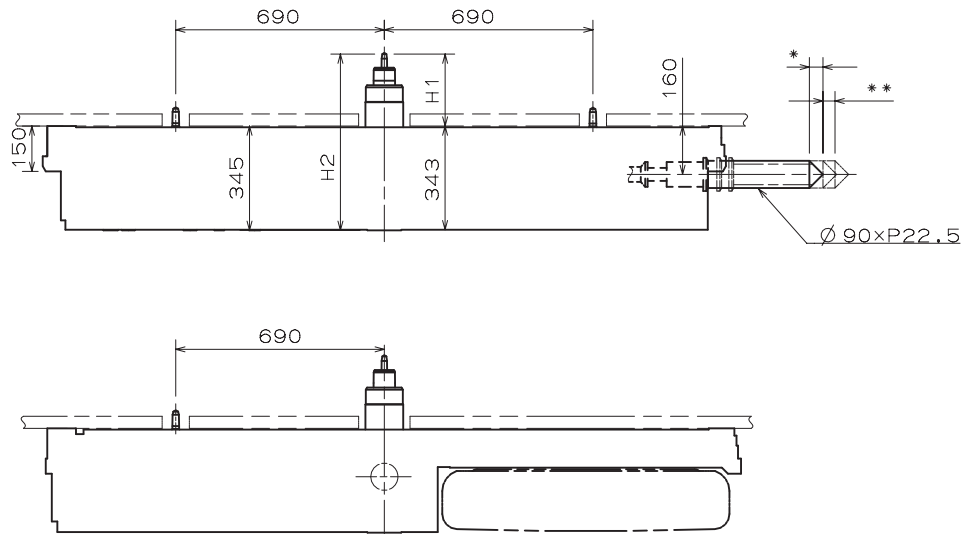
Dial leg hole

Small hour wheel

Dial leg hole

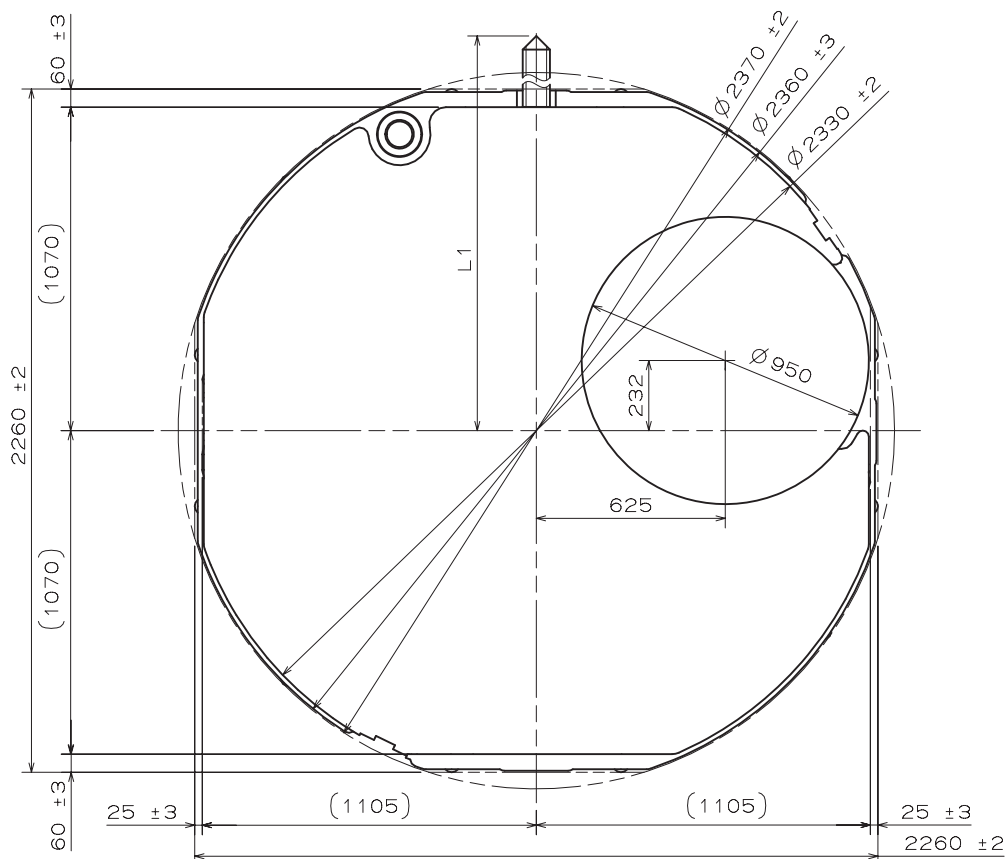
Day wheel

* First pull out stroke 45
 ** Second pull out stroke 39.8



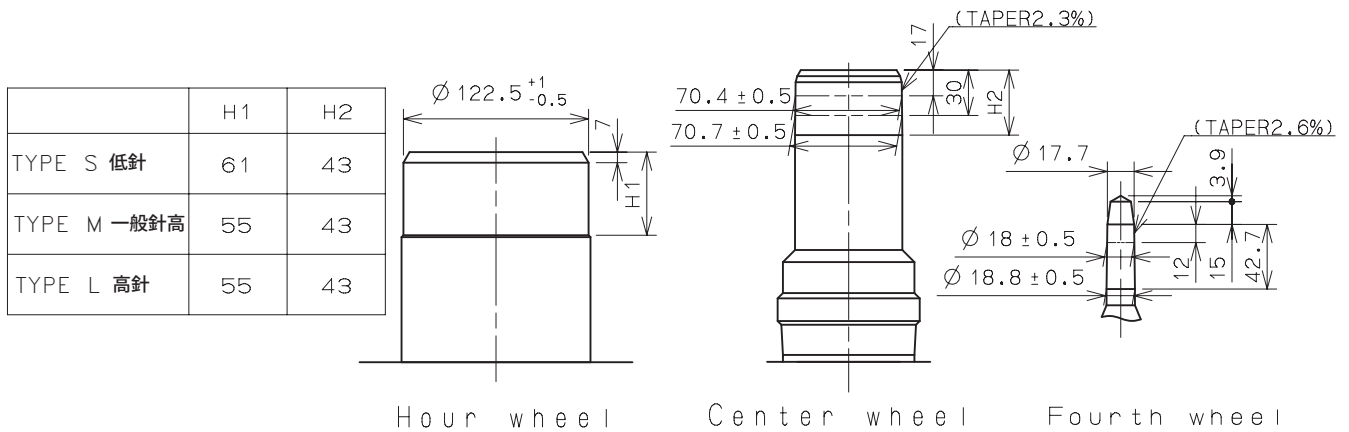
Center post 中心柱位		TYPE S 低針	TYPE M 一般針高	TYPE L 高針	TYPE LA 混合高針
Maximum height from main plate surface 與機芯平面的最大高度	H1	185	238	293	293
Total height incl. movement 機芯總高度	H2	530	583	638	638

Hand Setting Stem	TYPE A	TYPE B
L 1	2436	3012

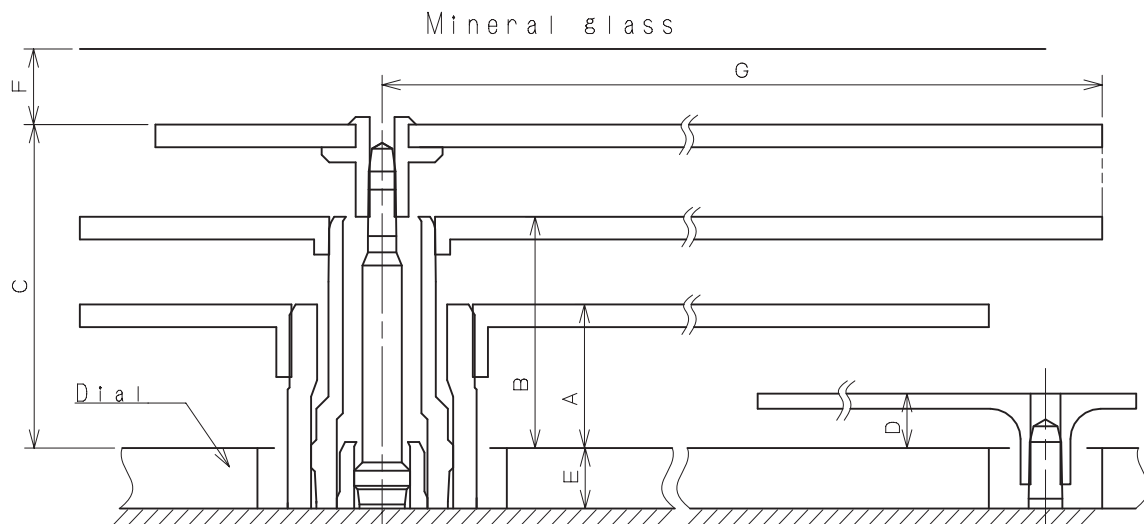
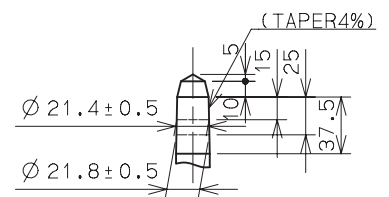


TYPE S/M/L

- *Hour hand unbalance $\leq 0.5 \mu\text{N}\cdot\text{m}$ (50mg·mm)
- *Minute hand unbalance $\leq 0.8 \mu\text{N}\cdot\text{m}$ (80mg·mm)
- *Second hand unbalance $\leq 0.3 \mu\text{N}\cdot\text{m}$ (30mg·mm)
- *Small hour hand unbalance $\leq 0.1 \mu\text{N}\cdot\text{m}$ (10mg·mm)
- *Date hand unbalance $\leq 0.1 \mu\text{N}\cdot\text{m}$ (10mg·mm)
- *Day hand unbalance $\leq 0.1 \mu\text{N}\cdot\text{m}$ (10mg·mm)



Part name	Part No.		
	TYPE S 低針	TYPE M 一般針高	TYPE L 高針
Hour wheel 時針輪	0273 053	0273 043	0273 045
Center wheel 分針輪	0221 137	0221 089	0221 093
Fourth wheel 秒針輪	0144 014	0144 004	0144 005
Date star 日曆針輪	0970 004	0970 004	0970 005
Small hour wheel 小時針輪	0157 018	0157 018	0157 019
Day wheel 星期針輪	1019 010	1019 010	1019 011



	A	B	C	D	E	F	G
TYPE S 低針	82	118	161	36	40	50	MAX1250
TYPE M 一般針高	95	153	214	36	40	50	-
TYPE L 高針	105	163	224	46	85	50	-

TYPE LA

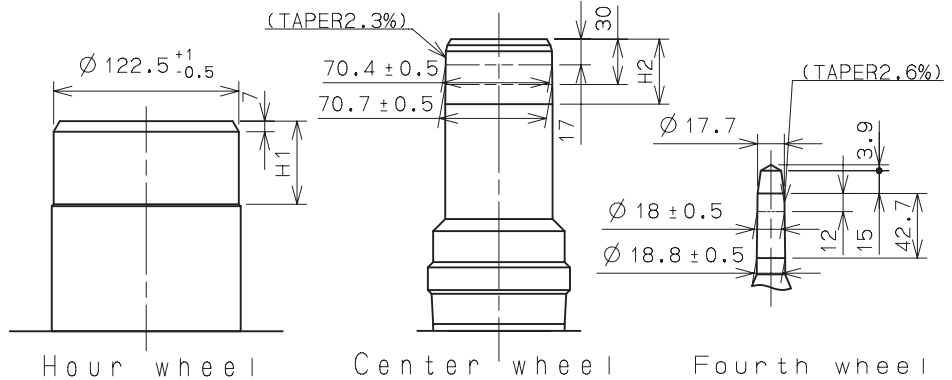
※Unbalance

- Hour hand unbalance $\leq 0.5 \mu\text{N}\cdot\text{m}$ (50mg·mm)
- Minute hand unbalance $\leq 0.8 \mu\text{N}\cdot\text{m}$ (80mg·mm)
- Second hand unbalance $\leq 0.3 \mu\text{N}\cdot\text{m}$ (30mg·mm)
- Small hour hand unbalance $\leq 0.1 \mu\text{N}\cdot\text{m}$ (10mg·mm)
- Date hand unbalance $\leq 0.1 \mu\text{N}\cdot\text{m}$ (10mg·mm)
- Day hand unbalance $\leq 0.1 \mu\text{N}\cdot\text{m}$ (10mg·mm)

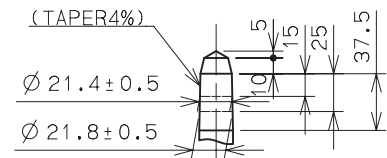
※Moment of inertia

- 24hour indicator $\leq 0.26 \mu\text{g}\cdot\text{m}^2$ (260mg·mm²) (Disc hand available)
- Day indicator $\leq 0.26 \mu\text{g}\cdot\text{m}^2$ (260mg·mm²) (Disc hand available)
- Date indicator $\leq 0.26 \mu\text{g}\cdot\text{m}^2$ (260mg·mm²) (Disc hand available)

	H1	H2
TYPE LA 混合高針	55	43

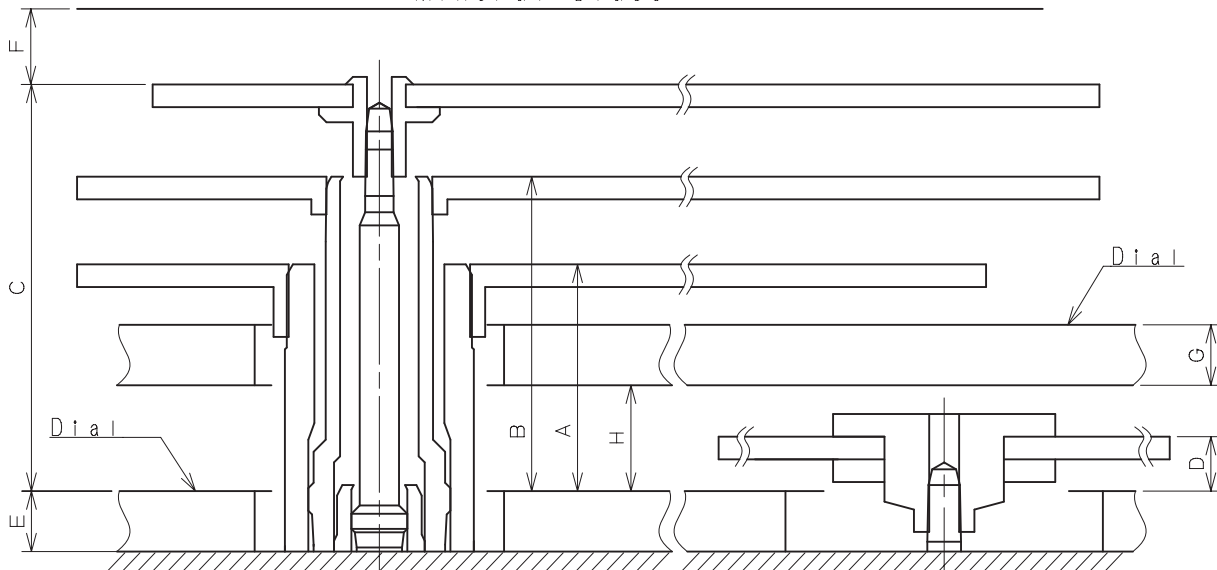


Part name		Part No.
		TYPE LA 混合高針
Hour wheel	時針輪	0273 045
Center wheel	分針輪	0221 093
Fourth wheel	秒針輪	0144 005
Date star	日曆針輪	0970 004
Small hour wheel	小時針輪	0157 018
Day wheel	星期針輪	1019 010



Small hour wheel
Date star
Day wheel

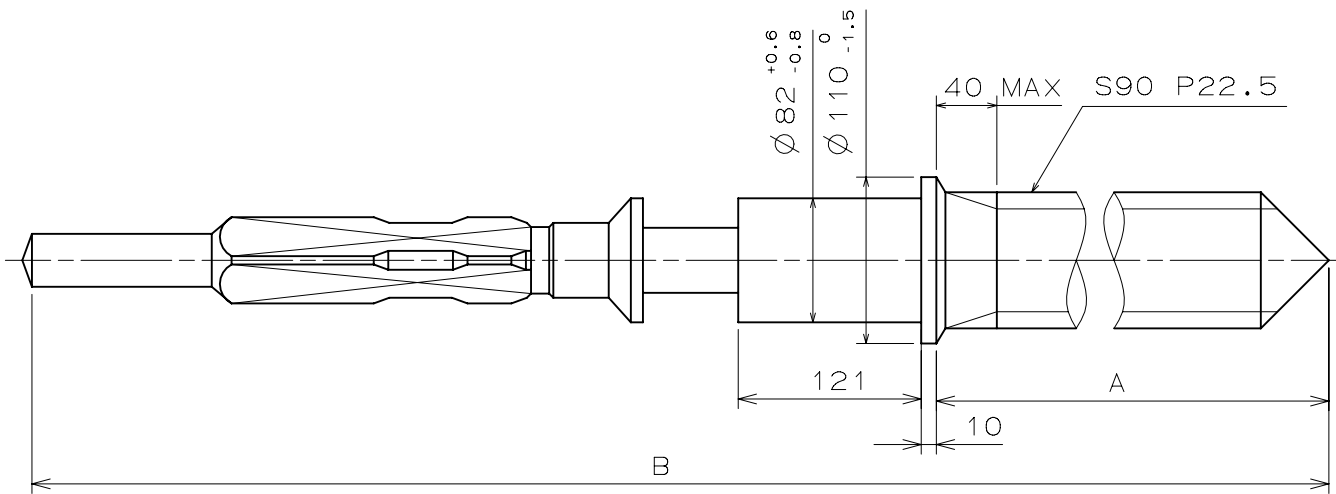
Mineral glass



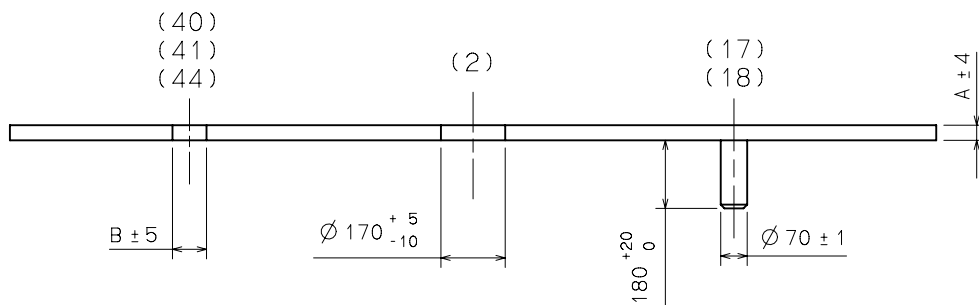
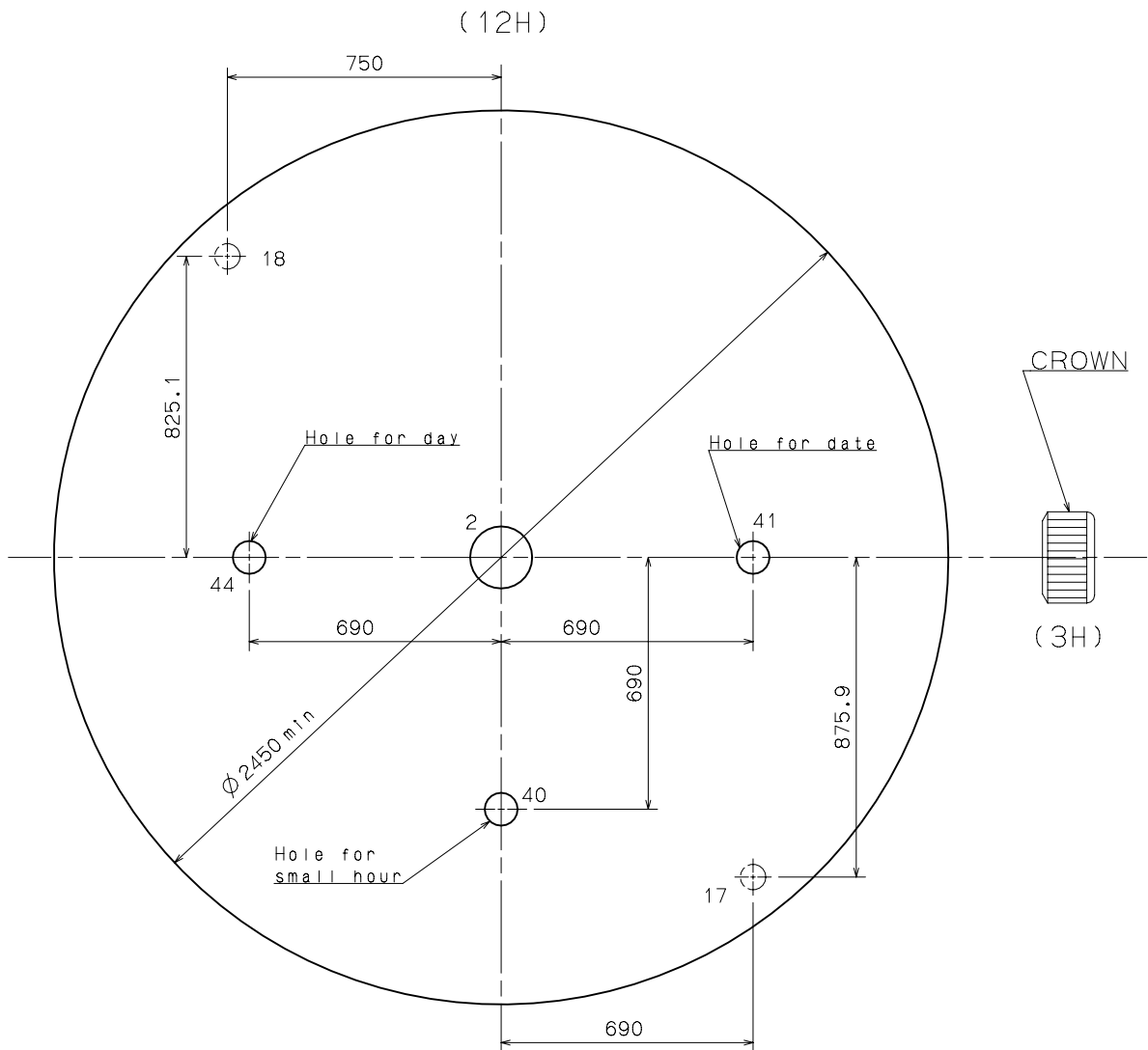
	A	B	C	D	E	F	G	H
TYPE LA 混合高針	150	208	269	36	40	50	40	70

Unit : 1=1/100mm

Version : 1

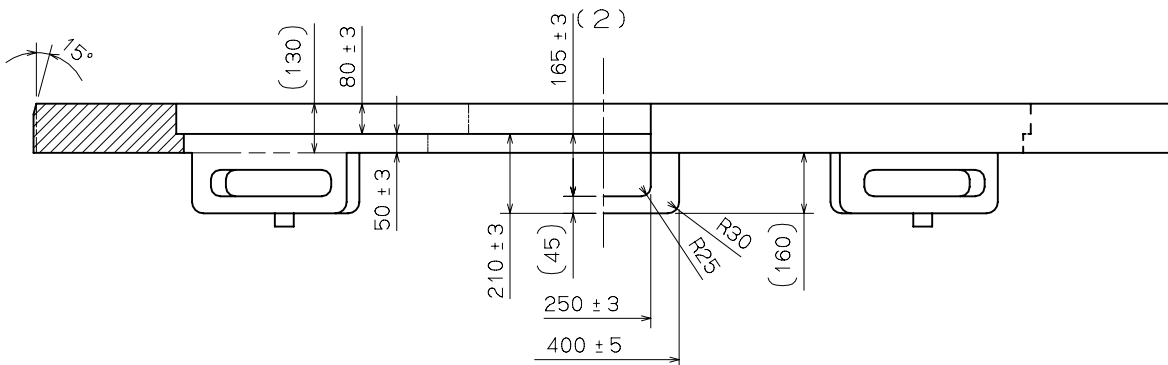
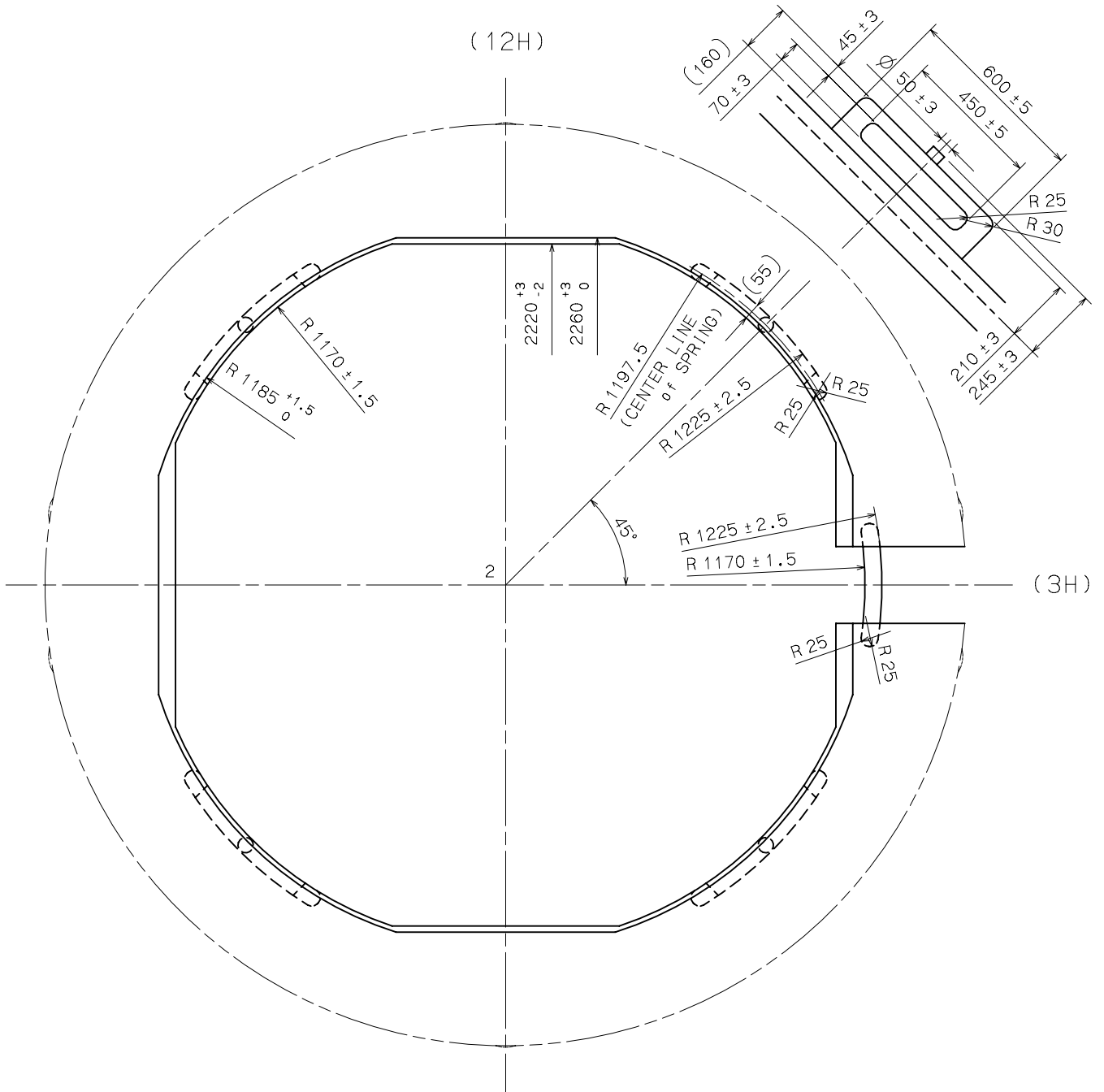


	Part No.	A	B
TYPE A	0351 177	1371	1969
TYPE B	0351 122	1947	2545



	TYPE S	TYPE M	TYPE L	TYPE LA
A	40	40	85	40(*)
B	∅ 90	∅ 90	∅ 90	∅ 210(*)

* Lower layer dial



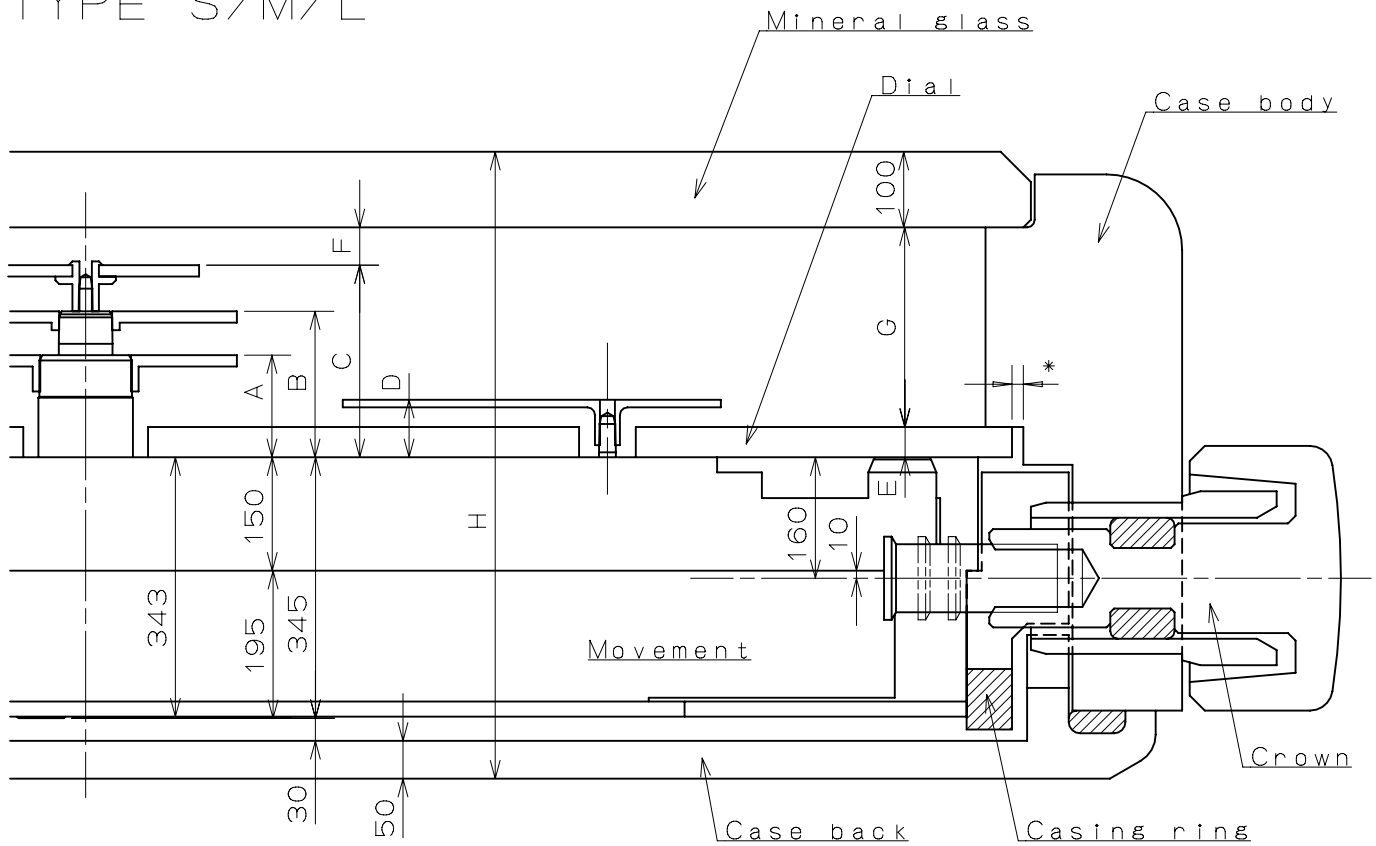
SECTIONAL VIEW of 12H DIRECTION

SIDE VIEW from 3H DIRECTION

Unit : 1=1/100mm

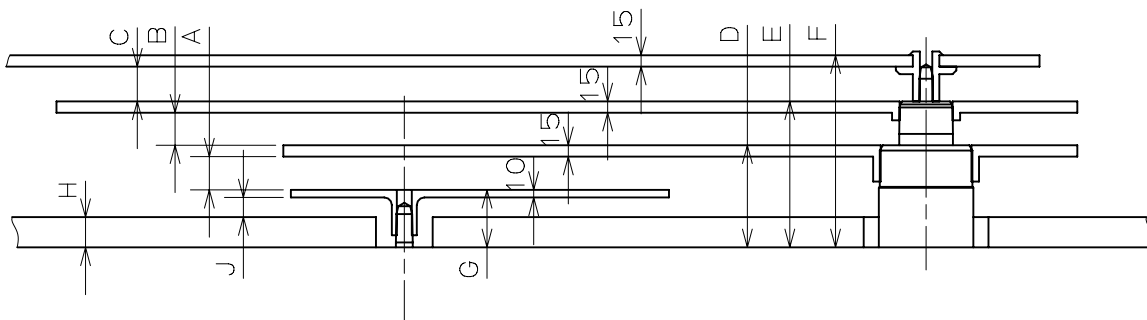
Version : 1

TYPE S/M/L



	A	B	C	D	E	F	G	H
TYPE S	122	158	201	76	40	50	211	776
TYPE M	135	193	254	76	40	50	264	829
TYPE L	190	248	309	131	85	50	274	884

*Recommended dimension(Clearance of dial and case body):15

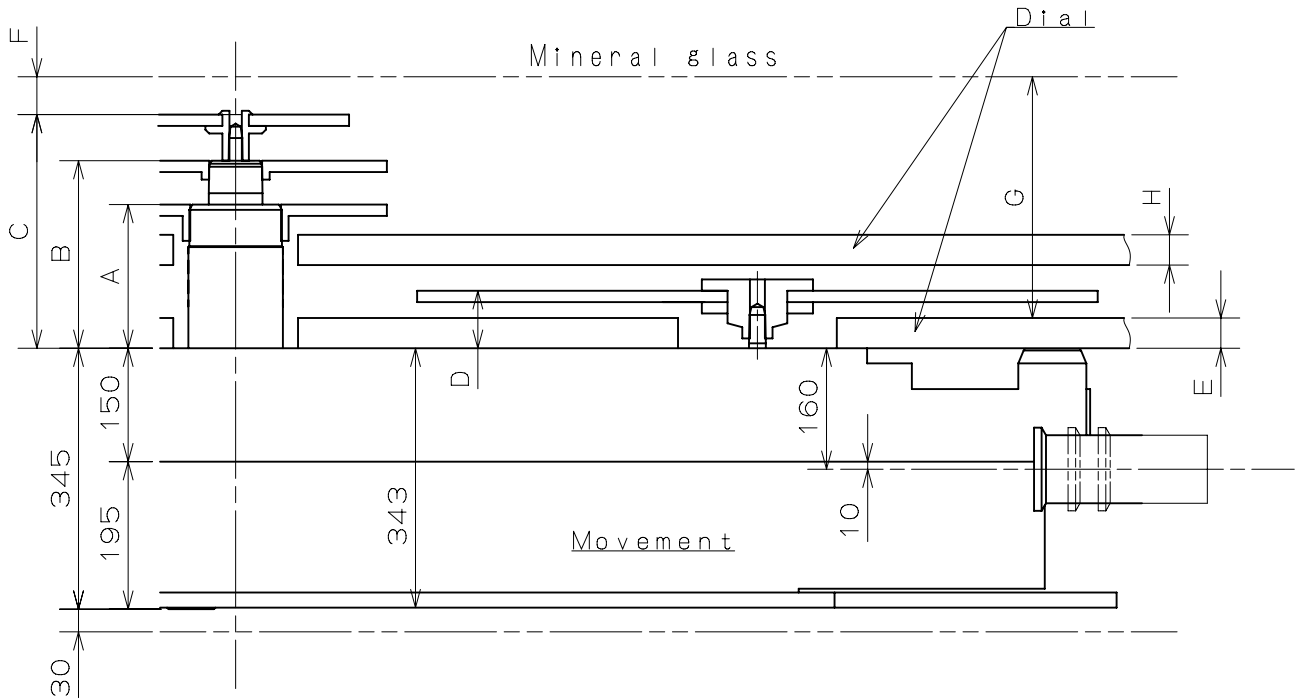


	A	B	C	D	E	F	G	H	J
TYPE S	31	21	28	122	158	201	76	40	26
TYPE M	44	43	46	135	193	254	76	40	26
TYPE L	44	43	46	190	248	309	131	85	36

Unit : 1=1/100mm

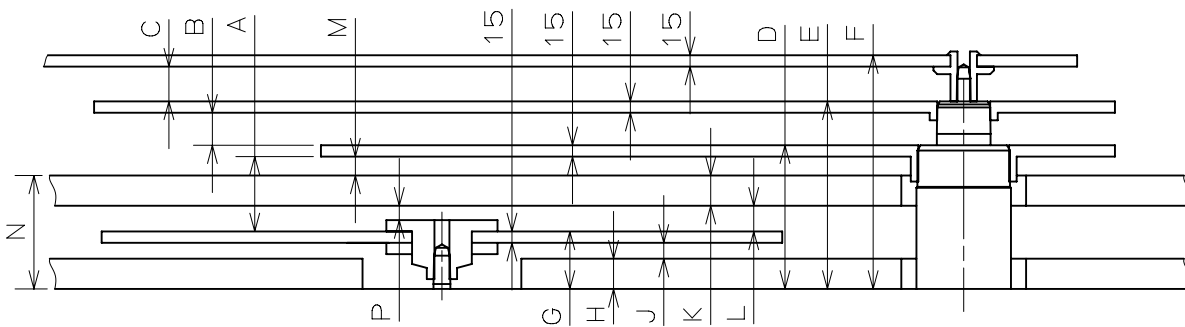
Version : 1

TYPE LA



	A	B	C	D	E	F	G	H
TYPE LA	190	248	309	76	40	50	319	40

*Recommended dimension (Clearance of dial and case body): 15

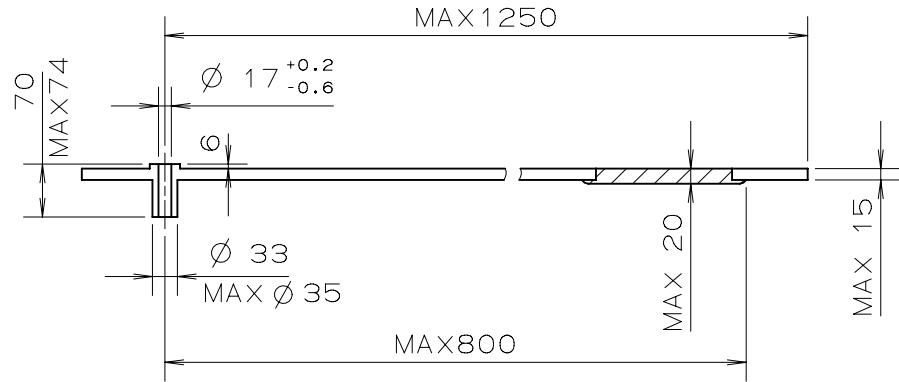


	A	B	C	D	E	F	G	H	J	K	L	M	N	P
TYPE LA	99	43	46	190	248	309	76	40	21	40	34	25	150	19

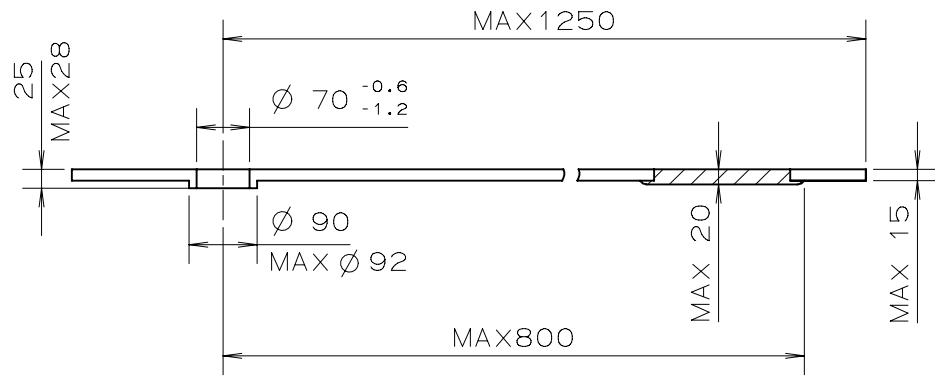
Unit : 1=1/100mm

Version : 1

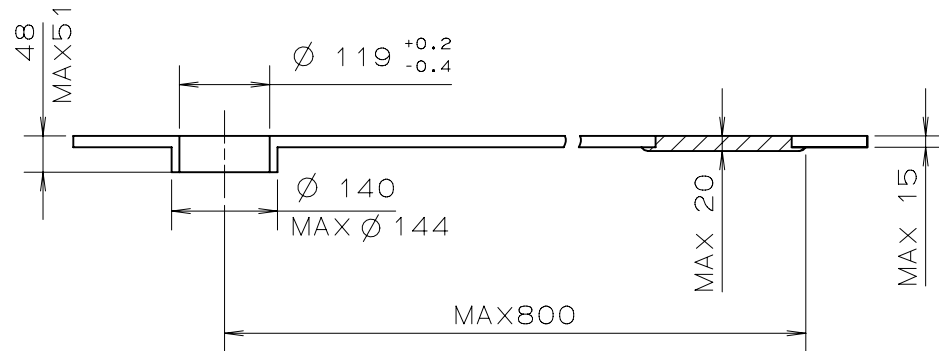
SECOND



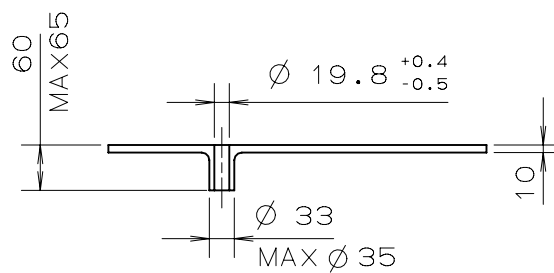
MINUTE



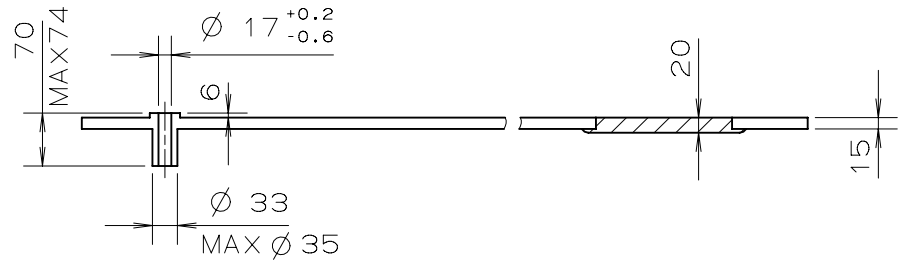
HOUR



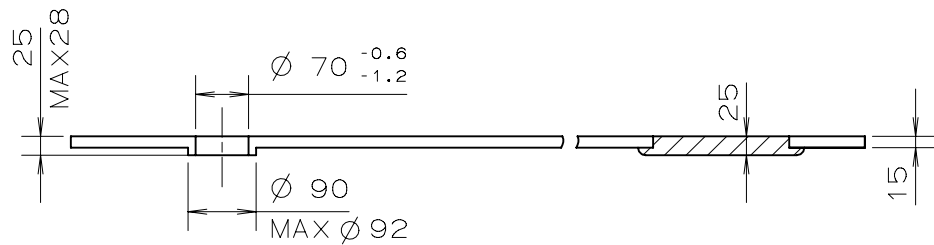
SMALL HOUR
DAY
DATE



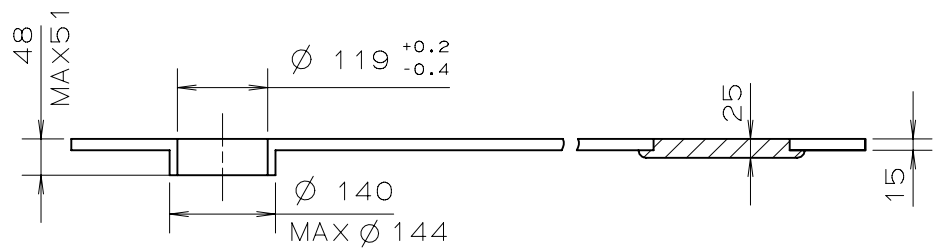
SECOND



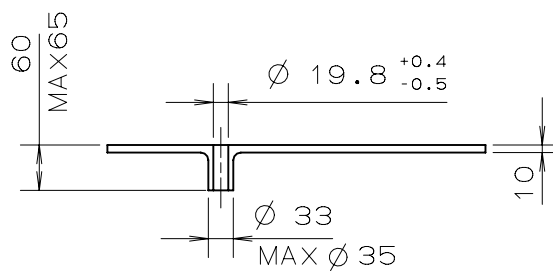
MINUTE



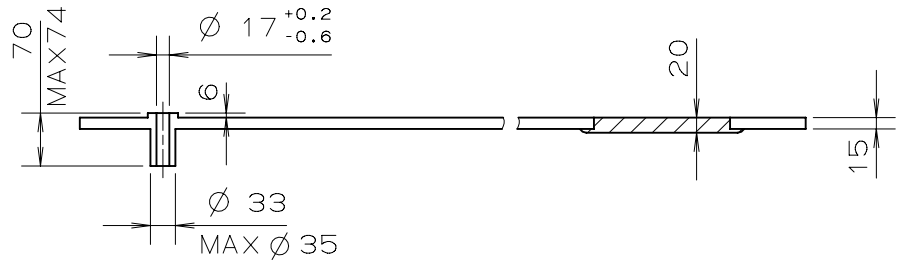
HOUR



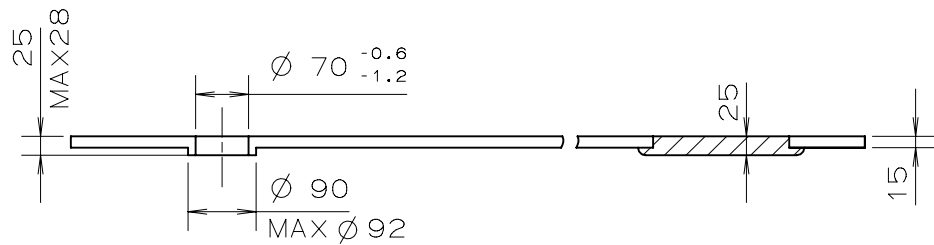
SMALL HOUR
DAY
DATE



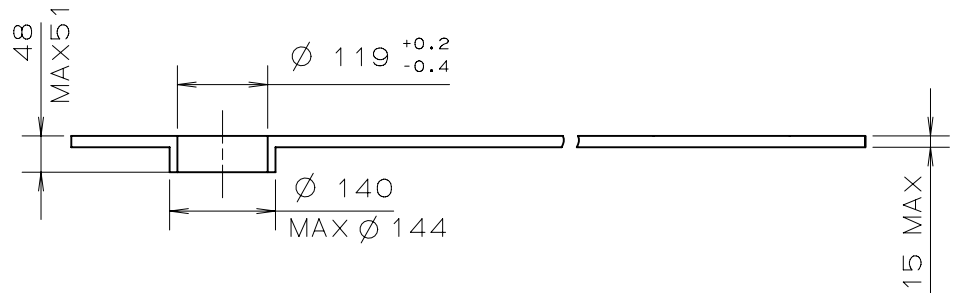
SECOND



MINUTE



HOUR



SMALL HOUR
DAY
DATE

