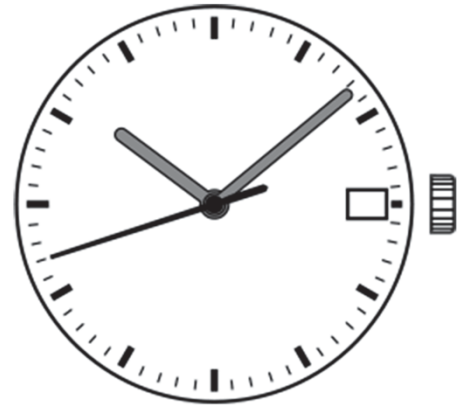


Watch Movement Specification and Drawing

Slim / Small Movement

VJ12B



Movement Size: **8^{3/4}"**
 Diameter: **Φ20.00mm**
 Height: **2.71mm**

Items	Ver.	Items	Ver.
Specification	1		
Appearance	1		
Casing	1		
Hand Fitting	1		
Hand Setting Stem	1		
Dial - 1	1		
Dial - 2	1		
Casing Ring	1		
Assembly Plan	1		
Hands	1		

CAL.VJ12B 8³/₄ Ligne Quartz Movement

Three Hands with Date

1. FUNCTION

- | | |
|------------------------------|---|
| · Jewel | 0 jewel |
| · Accuracy | Less than ± 20 seconds / month (Normal temperature range) |
| · Battery life | Approx. 3 years |
| · Regulation hands unbalance | Hour hand : Less than $0.30 \mu\text{N}\cdot\text{m}$ (30 mg·mm)
Minute hand : Less than $0.30 \mu\text{N}\cdot\text{m}$ (30 mg·mm)
Second hand : Less than $0.07 \mu\text{N}\cdot\text{m}$ (7 mg·mm) |
| · Additional function | Date display with quick date correction |

2. USE AND TEST CONDITION

- | | | |
|-------------------------------|--|------------------------------------|
| · Battery | SR621SW | (Recommended battery is SEIZAIKEN) |
| · Operation temperature range | From $-5 \text{ }^{\circ}\text{C}$ to $+50 \text{ }^{\circ}\text{C}$ | |
| · Antimagnetic | $\geq 1600 \text{ A / m}$ | (Direct current magnetic field) |
| · Test of accuracy | 10 seconds | (Duration of measurement) |

*** All specifications are subject to change without notice.**

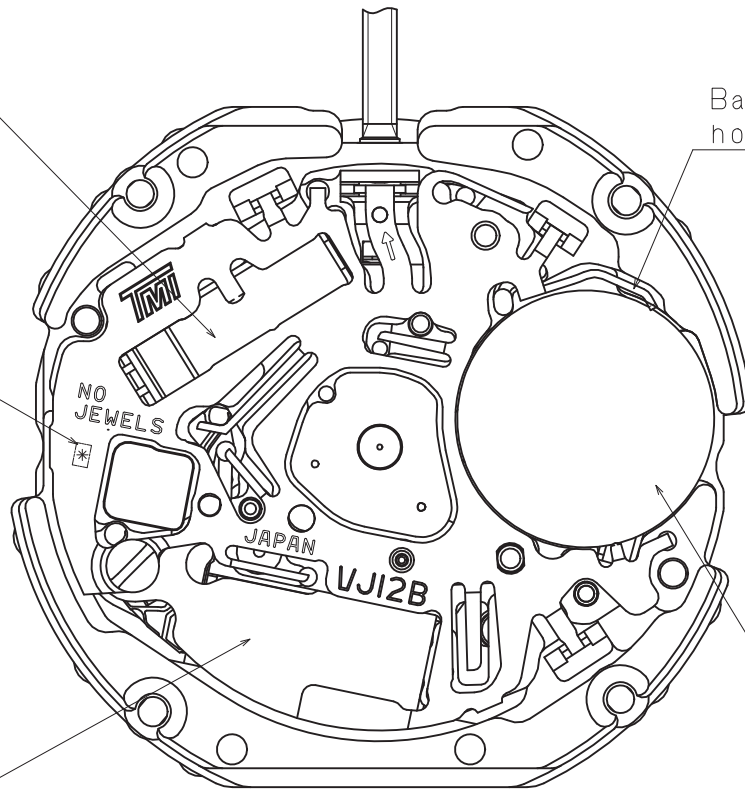
Appearance

VJ12B

Crystal oscillator

Battery side holding spring

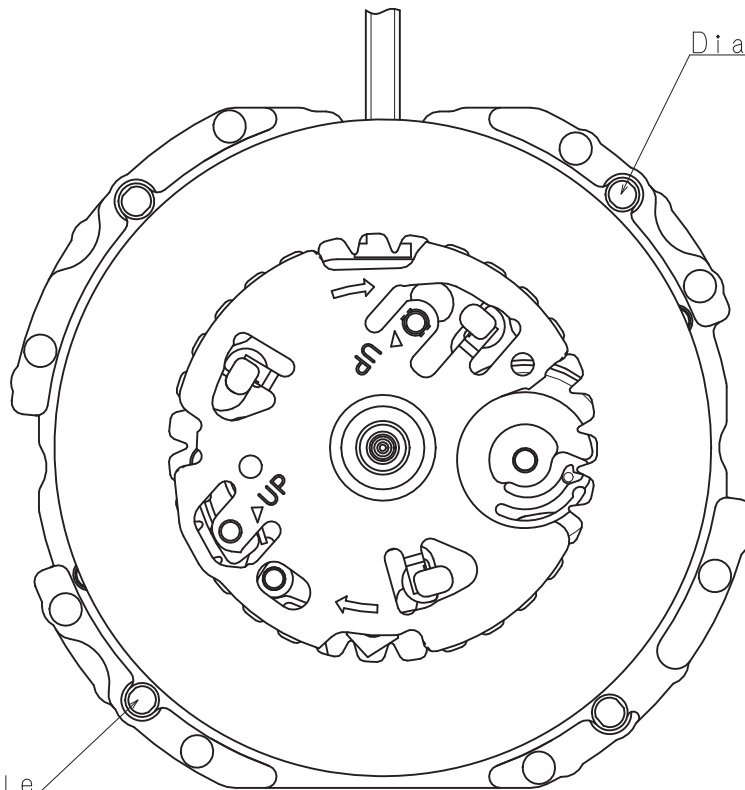
	*
TYPE M	2
TYPE L	3



Coil block

Battery

Dial leg hole



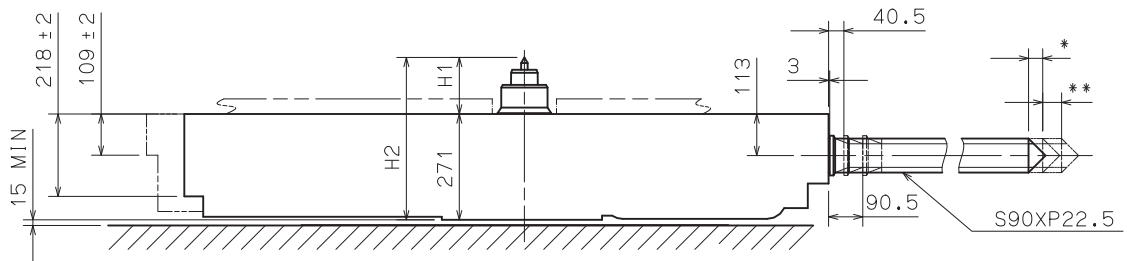
Dial leg hole

Version : 1

Battery Side holding spring Type.

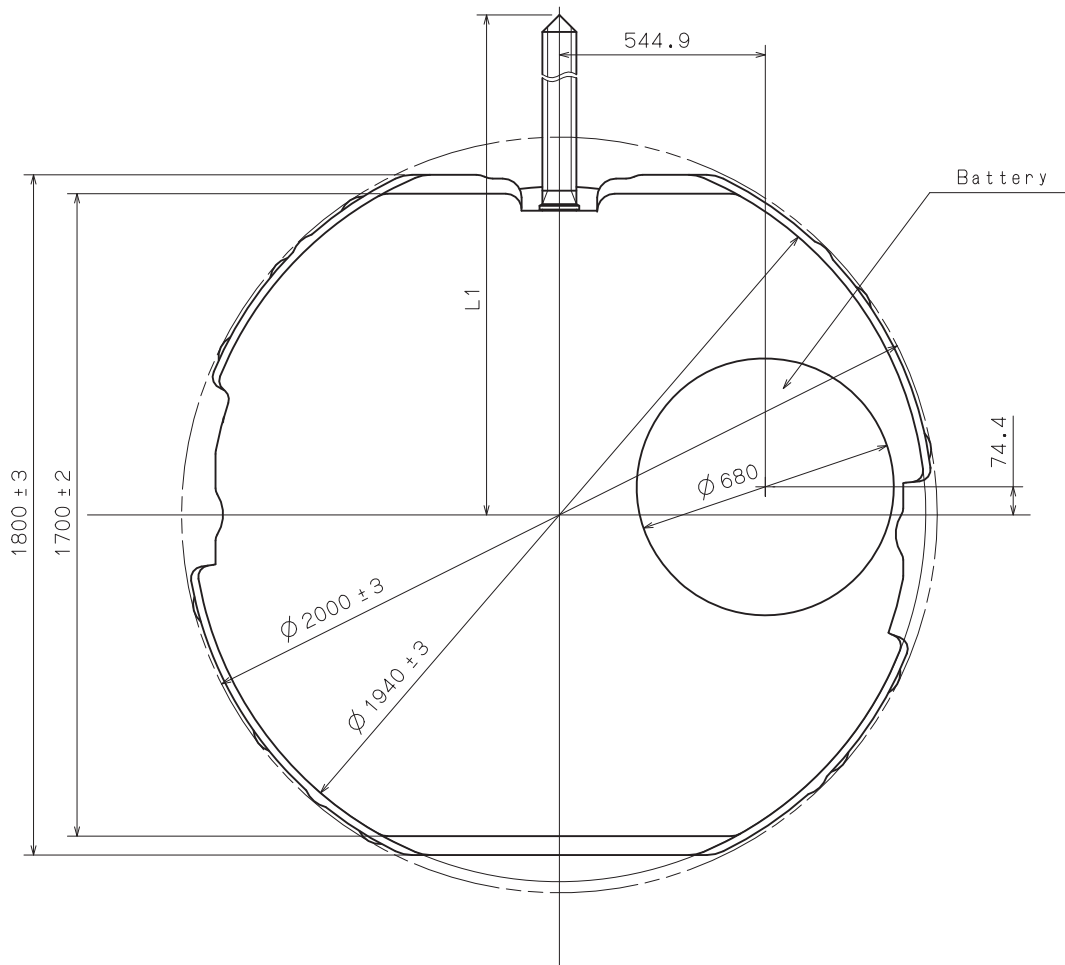
* First Pull out Stroke 37.5

** Second Pull out Stroke 50



Center post	中心柱位	TYPE M 一般針高	TYPE L 高針
Maximum height from main plate surface 與機芯平面的最大高度	H1	149.7	208.8
Total height incl. movement 機芯總高度	H2	420.7	479.8

Hand Setting Stem	TYPE A	TYPE B
L1	2003	2413



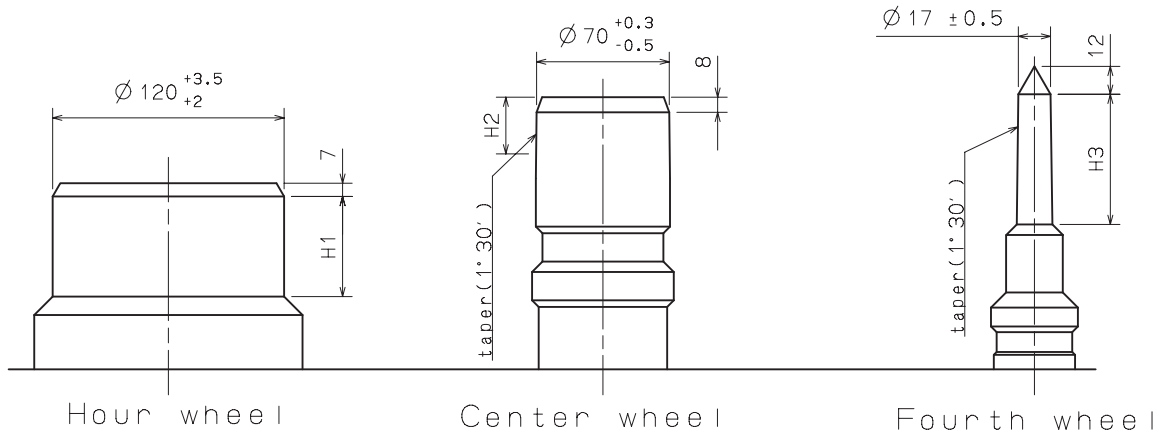
Unit : 1=1/100mm

Version : 1

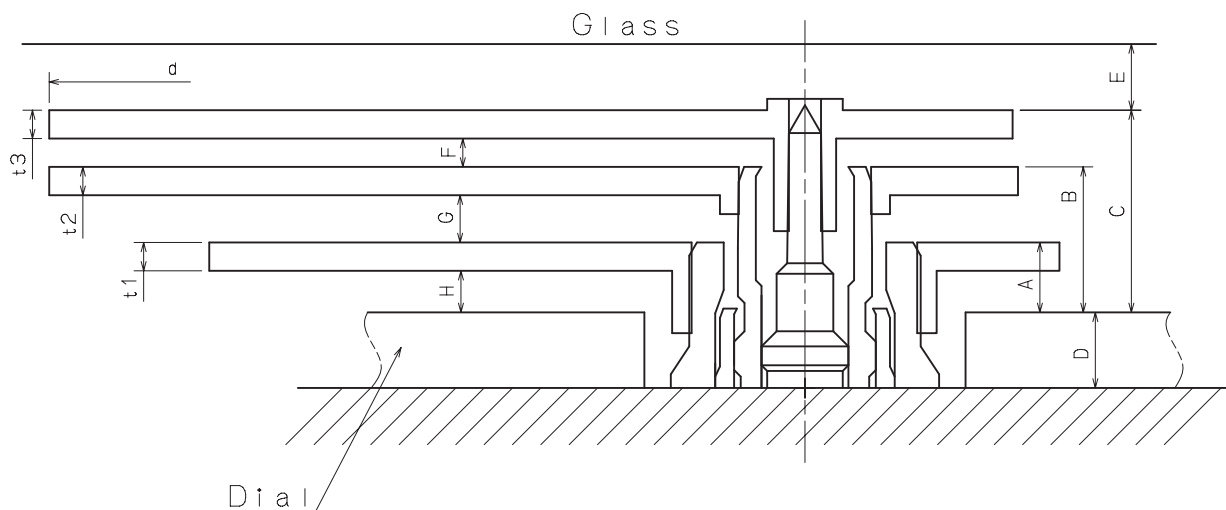
Hour hand unbalance $\leq 0.3\mu\text{N}\cdot\text{m}$ (30mg·mm)

Minute hand unbalance $\leq 0.3\mu\text{N}\cdot\text{m}$ (30mg·mm)

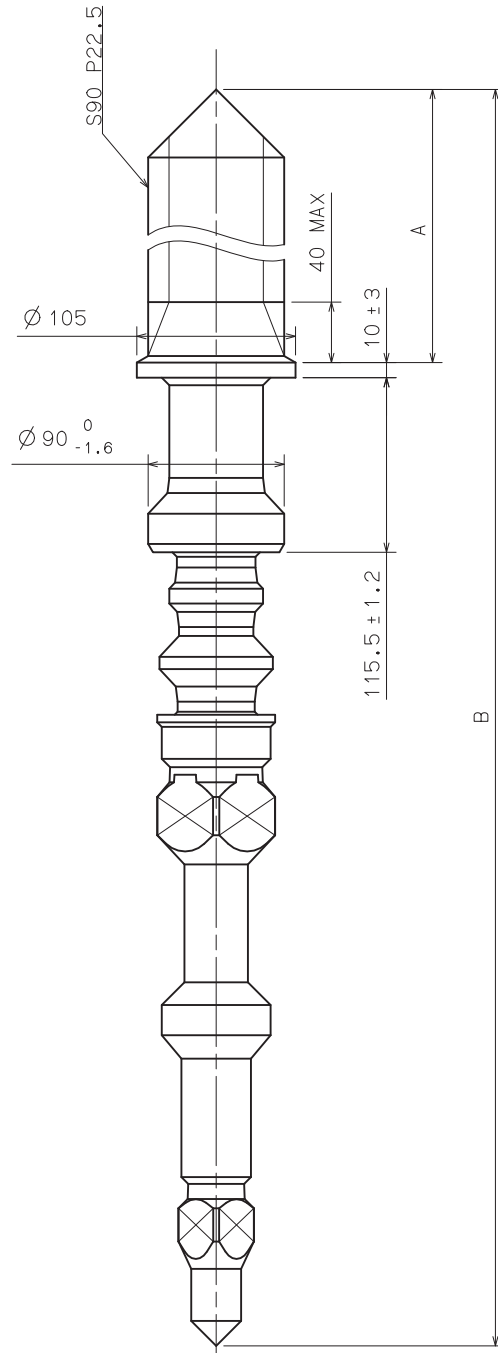
Second hand unbalance $\leq 0.07\mu\text{N}\cdot\text{m}$ (7mg·mm)



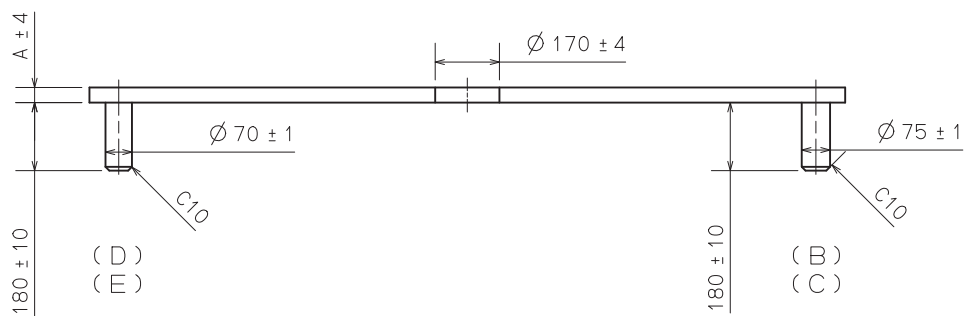
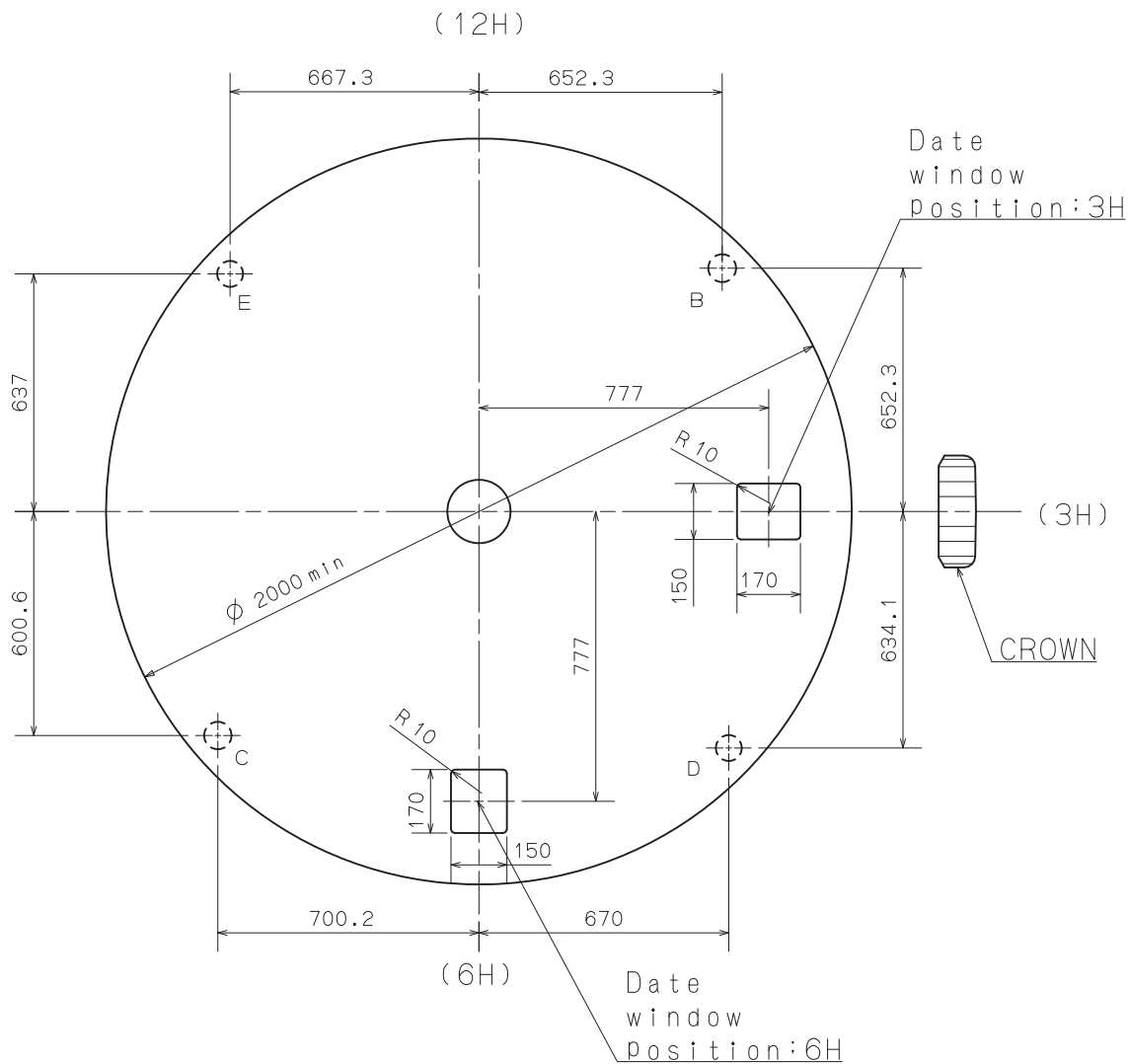
	Part No.			Dimension		
	Hour wheel 時針輪	Center wheel 分針輪	Fourth wheel 秒針輪	H1	H2	H3
TYPE M 一般針高	0273 021	0221 055	0144 097	48	27	69
TYPE L 高針	0273 023	0221 058	0144 098	57	27	69



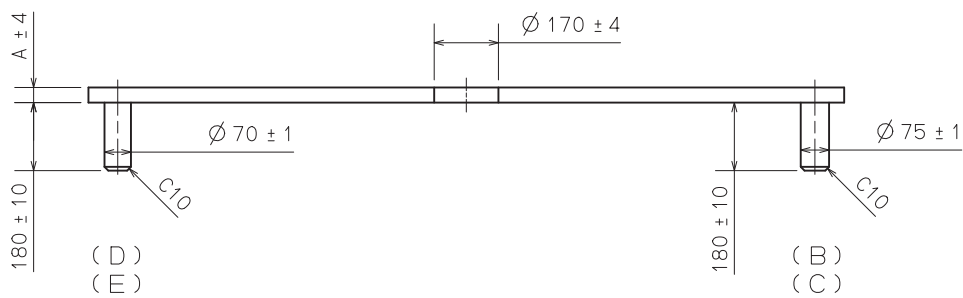
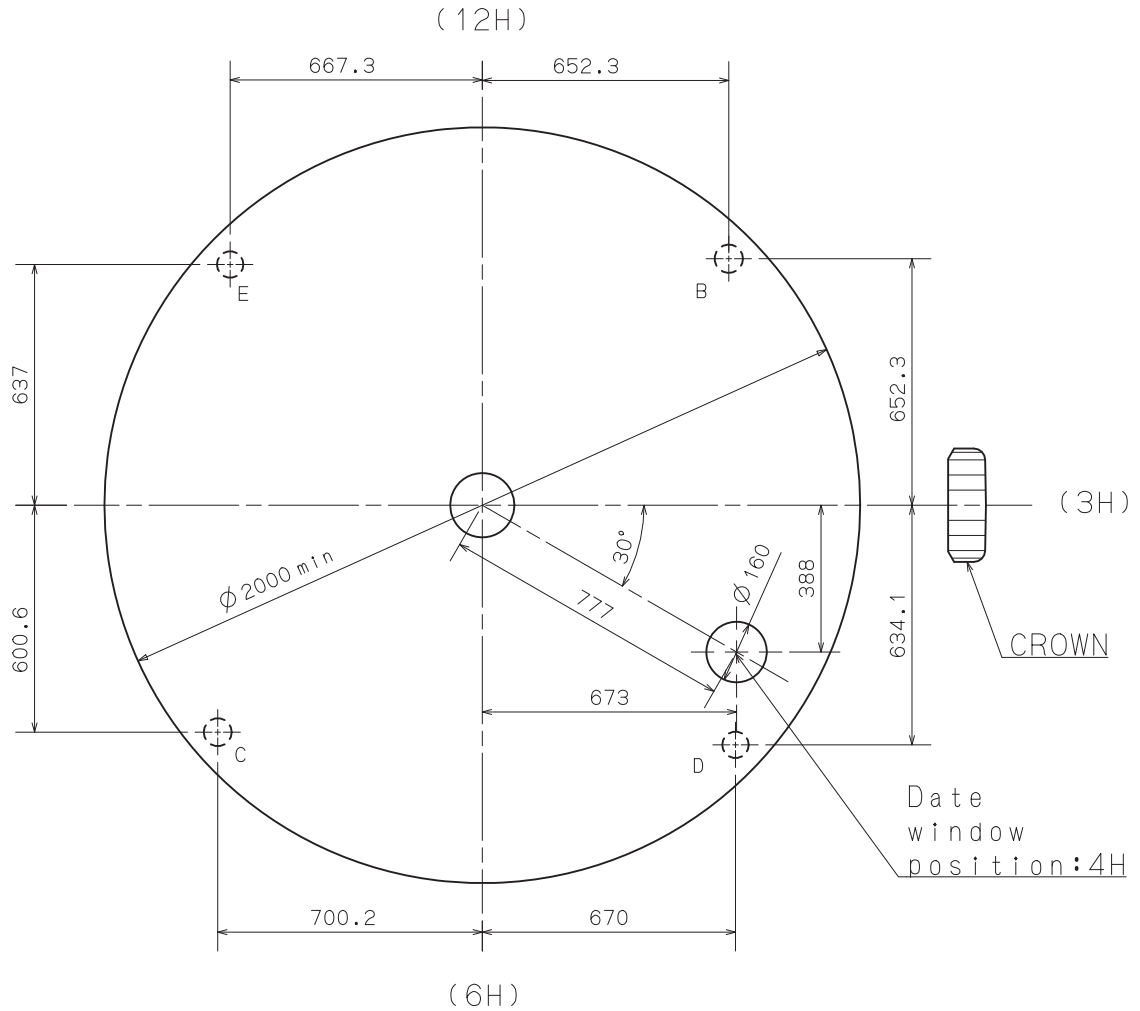
	A	B	C	D	E	F	G	H	t1	t2	t3	d
TYPE M 一般針高	37	77	107	40	35	15	25	22	15	15	15	∅ 2500
TYPE L 高針	37	86	121	85	35	20	34	22	15	15	15	∅ 2500



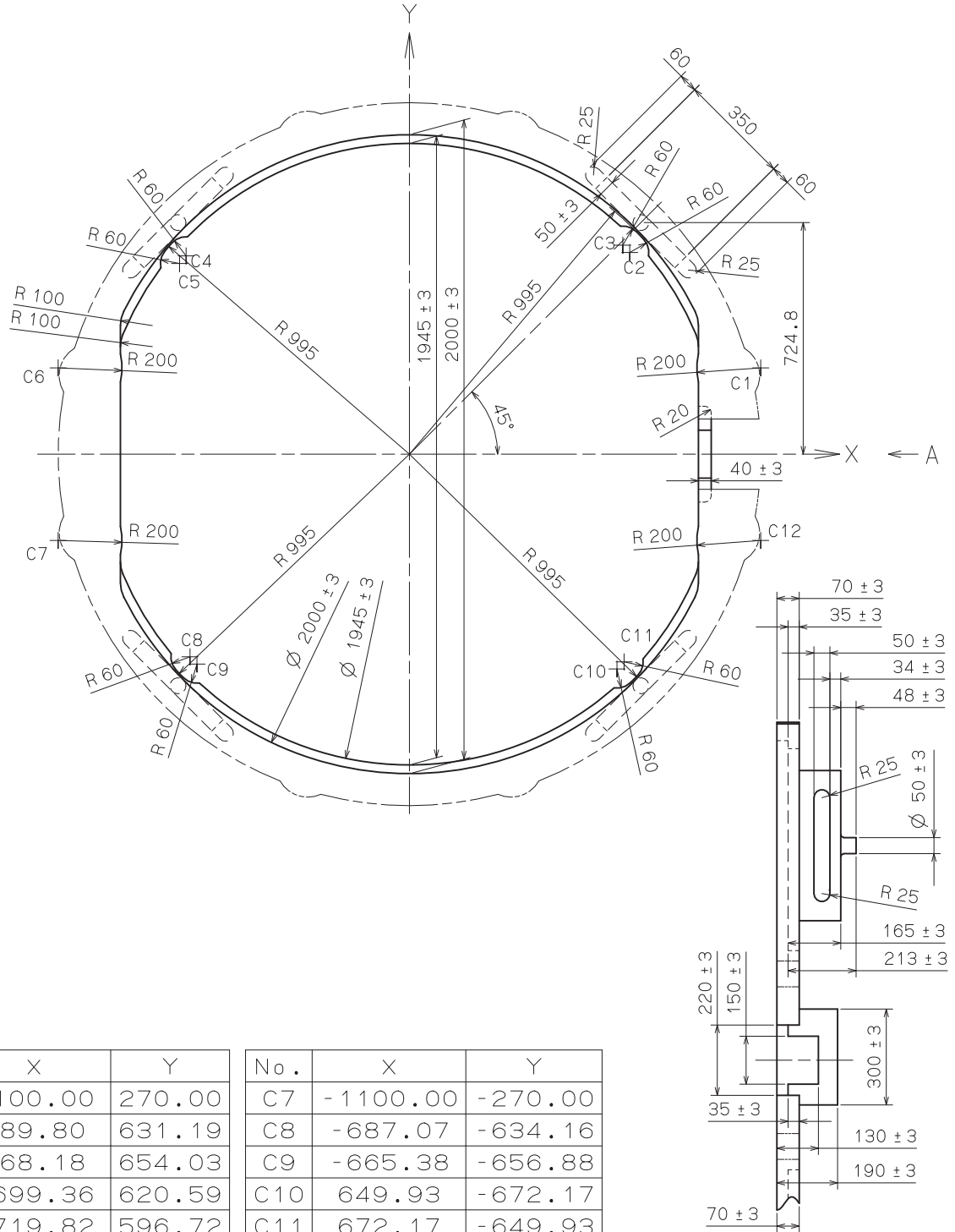
	Part No.	A	B
TYPE A	0351 332	1185	1835.5
TYPE B	0351 001	1595	2245.5



	TYPE M	TYPE L
A	40	85

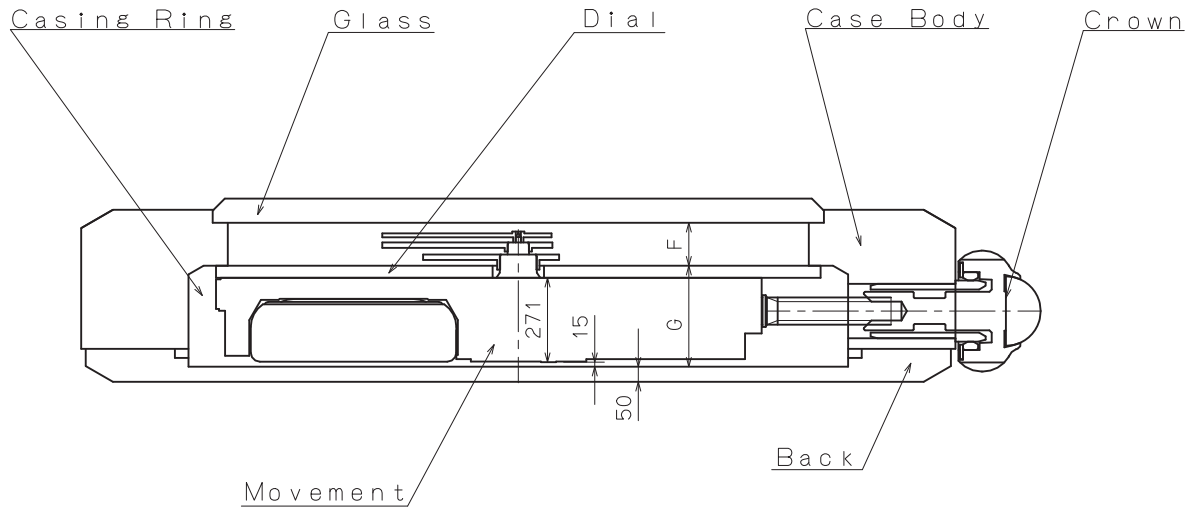


	TYPE M	TYPE L
A	40	85

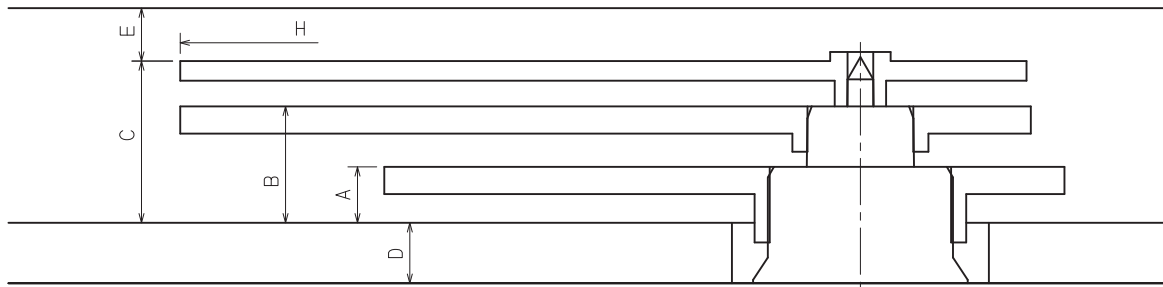


No. .	X	Y
C1	1100.00	270.00
C2	689.80	631.19
C3	668.18	654.03
C4	-699.36	620.59
C5	-719.82	596.72
C6	-1100.00	270.00

No. .	X	Y
C7	-1100.00	-270.00
C8	-687.07	-634.16
C9	-665.38	-656.88
C10	649.93	-672.17
C11	672.17	-649.93
C12	1100.00	-270.00

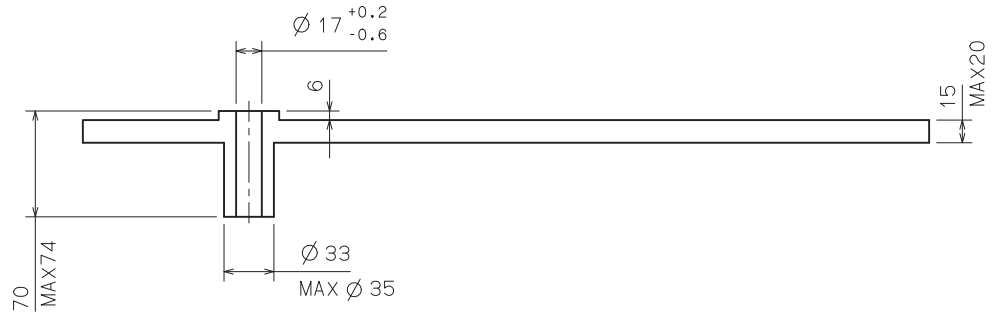


Glass

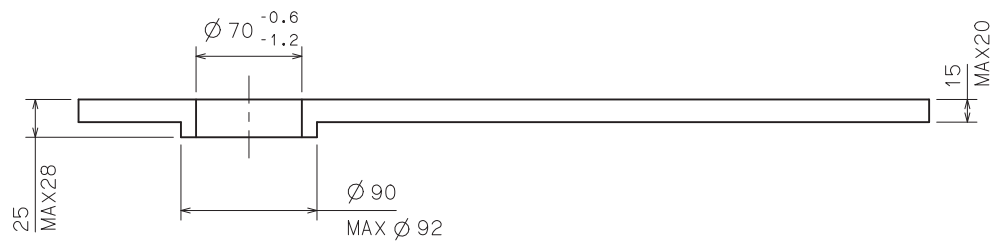


	A	B	C	D	E	F	G	H
TYPE M	37	77	107	40	35	142	326	∅ 2500
TYPE L	37	86	121	85	35	156	371	∅ 2500

SECOND



MINUTE



HOUR

