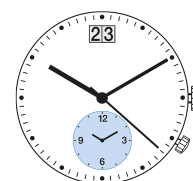


# RONDA normtech 700 & 6000

Lange Batterielaufzeit und spezielle Funktionen

*Caliber 6203.B – 11½'''*



## Product Specifications

Analog quartz movement

Line normtech

Caliber 6203.B

Size 11½'''

Version Swiss Made 5 Jewels / gold plated  
Swiss Parts 1 Jewels / nickel plated

Standard battery life 40 months

Hand fitting height 1

## Features

- Repairable metal watch movement
- Power saving mechanism with pulled out stem: Reduction of consumption approximately 70%

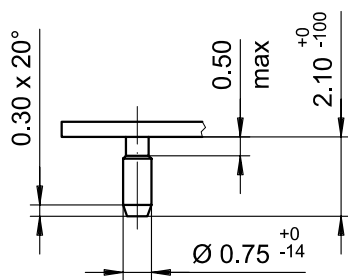
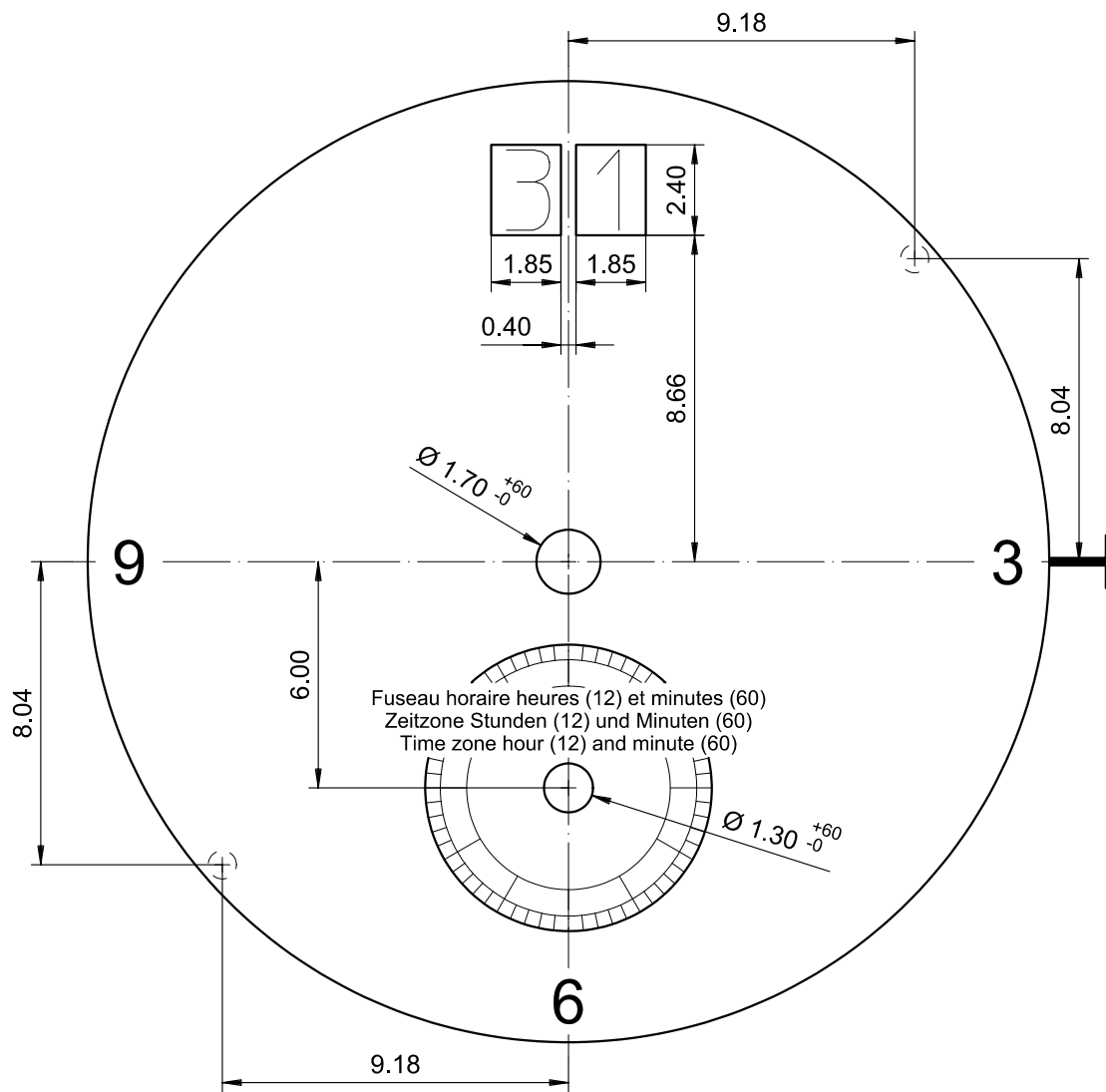
**Functions**

- Multifunction
- 1 eye
- Second time zone
- Big date
- 3 hands

**Technical Specifications**

Diameter Total	26.00 mm
Case fitting	25.60 mm
Movement height	3.30 mm
Height over standard battery	3.30 mm
Movement rest	0.60 mm
Height over stem	1.80 mm
Length of stem travel	1.00 mm
Stem thread	0.90 mm
Standard battery	373
Standard battery life	40 months
Battery voltage	1.5 V
Current consumption – typical	1.03 µA (Date Mechanism not in Gear)
Current consumption – maximum	1.45 µA (Date Mechanism not in Gear)
Useful torque second – typical	6 µNm
Useful torque minute – typical	300 µNm
Operating temperature	0 - 50 °C
Instantaneous rate	-10/ +20 sec/month
Resistance to magnetic fields	18.8 Oe
Resistance against shock	NIHS 91-10

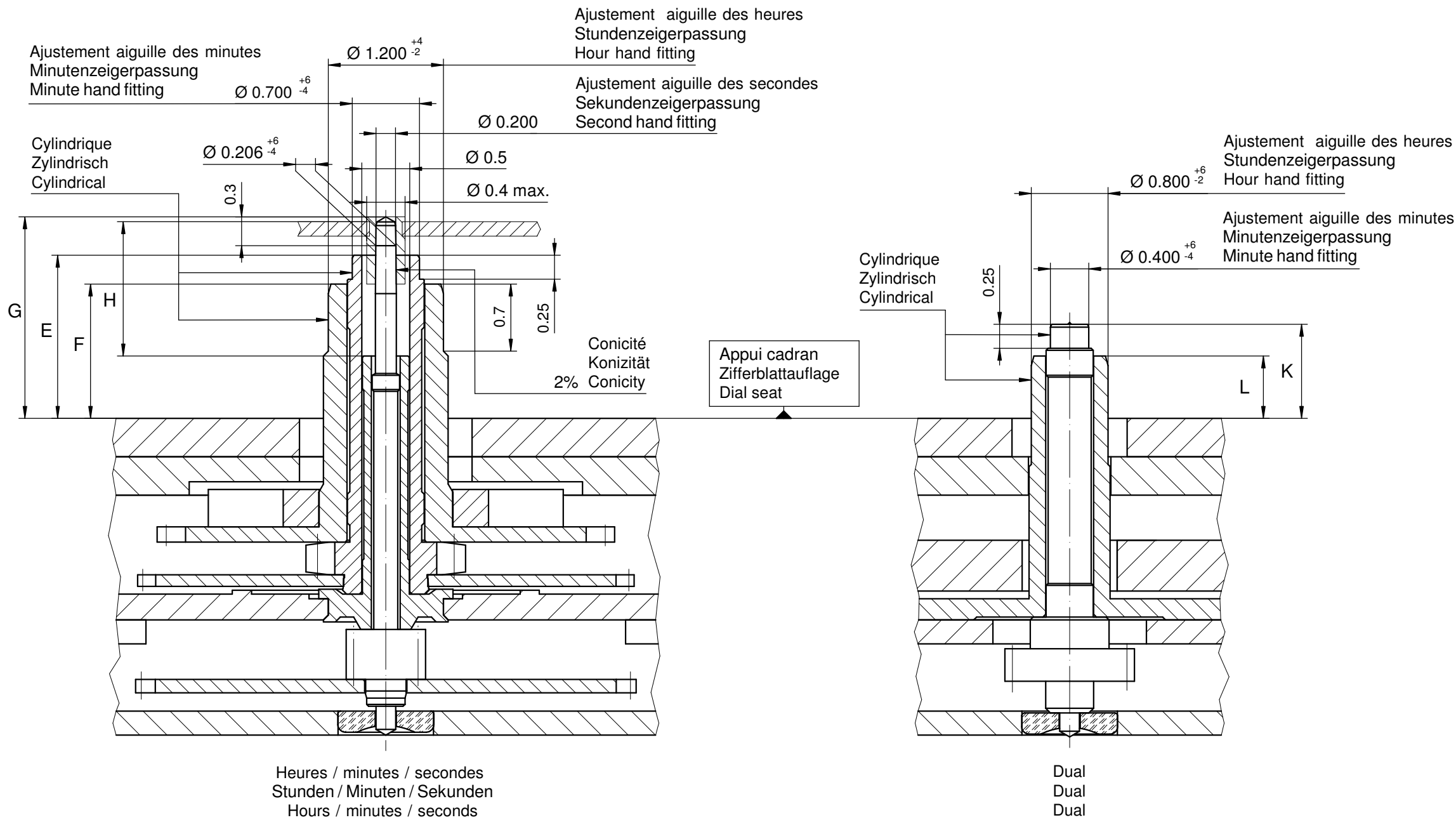




Tige	Date
Stellw.	Datum
Stem	Date
<b>3H</b>	<b>12H</b>
	<input type="checkbox"/>

Epaisseur du cadran selon hauteur de l'aiguillage  
 Zifferblattdicke gemäss Zeigerwerkhöhen  
 Dial thickness according to hand fitting heights

<b>Cadran</b> <b>Zifferblatt</b> <b>Dial</b>	<b>11½"</b>	Issued	06 Mai 2004	mg
		Modified	21.Apr.2008 ÄA 4553	fl
		Released	YES	
		Tolerance	+/- 20 µm	
		Scale	5 : 1 (A4V)	
<b>RONDA</b>	<b>6203.B</b>	Sous réserve de modifications Aenderungen vorbehalten Modifications reserved		
		No.	5010.797	01



Heures / minutes / secondes  
 Stunden / Minuten / Sekunden  
 Hours / minutes / seconds

Dual  
 Dual  
 Dual

		Aig. des secondes Sekundenzeiger Second hand		Aig. des minutes Minutenzeiger Minute hand		Aig. des heures Stundenzeiger Hour hand		Dual		Lors de la pose d'aiguilles, le mouvement doit être soutenu. Beim Zeigersetzen muss das Werk abgestützt werden. The movement needs to be supported for hand setting.
		mg max.	10	30	30	10	10	Aig. des minutes Minutenzeiger Minute hand	Aig. des heures Stundenzeiger Hour hand	
µNm max.	0.05	0.80	0.80	0.15	0.15	Balourd / Unwucht / Unbalance *				
gmm <sup>2</sup> max.	0.4	-	-	-	-	Inertie / Massenträgheit / Inertia *				
N max.	30	40	40	30	30	Force de chassage / Aufpresskraft / Force				

Aiguillages Zeigerwerkhöhe Hand fitting height						
Dépassement Höhe über Zifferblattaufgabe Height over dial seat						
No	Pignon des secondes Sekundentrieb Second pinion	Chaussée Minutenrohr Cannon-pinion	Roue des heures Stundenrad Hour wheel	Dual		
				Chaussée Minutenrohr Cannon-pinion	Roue des heures Stundenrad Hour wheel	
	G	E	F	H	L	
1	2.10	1.70	1.40	1.45	0.98	0.65
2	2.30	1.90	1.60	1.65	1.18	0.88

Aiguillages Zeigerwerkhöhe Hand fitting height						
Peinture comprise / inkl. Farbe / Paint included						
Epaisseur maximum du cadran Maximale Zifferblattstärke Maximum dial thickness						
No	Sous l'aiguille des secondes Unter Sekundenzeiger Under second hand	Sous l'aiguille des minutes Unter Minutenzeiger Under minute hand	Sous l'aiguille des heures Unter Stundenzeiger Under hour hand	Dual		Epaisseur des aiguilles Zeigerdicke Hands thickness
				Sous l'aiguille des minutes Unter Minutenzeiger Under minute hand	Sous l'aiguille des heures Unter Stundenzeiger Under hour hand	
1	1.60	1.30	1.00	0.55	0.25	0.15
2	1.85	1.50	1.20	0.75	0.45	0.15

## Aiguillages Zeigerwerkhöhen 11½"

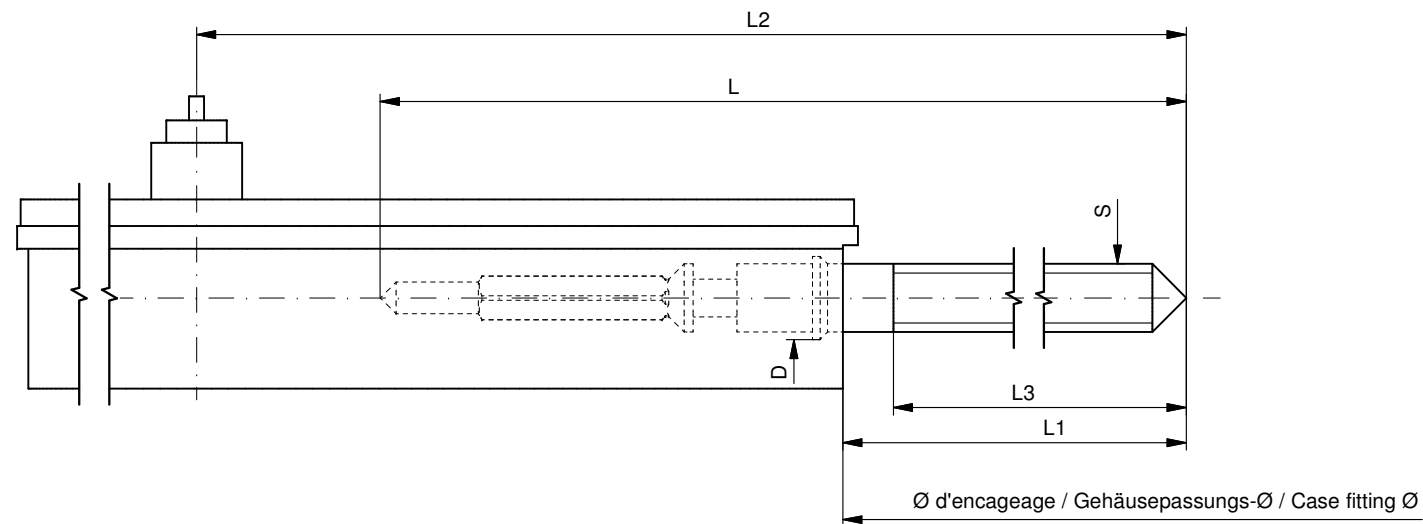
### Hand fitting heights

<b>RONDA</b>	<b>6203.B</b>	Issued	05 sep 2005	fl
		Modified	11 Nov 2013 ÄÄ 13587	dh
		Released	Yes	
		Tolerance	µm	
		Scale	20 : 1 (A3H)	
Sous réserve de modifications Änderungen vorbehalten Modifications reserved				
		No.	3316.100	08

\* En cas de données différentes, veuillez contacter le service après-vente

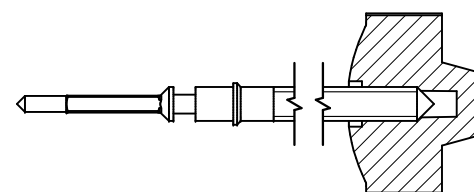
\* Bei abweichenden Werten, bitte technischen Kundendienst anfragen

\* In case of different values, please contact the customer service



Tige de travail (intégrée dans le mouvement)  
 Arbeitstellwelle (im Werk eingebaut)  
 Working stem (implemented in the movement)

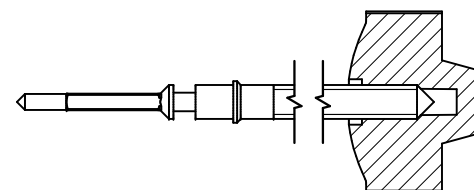
No. d'article Artikelnummer Part number	L	L1	L2	L3	S	D
3000.189.CO	19.30	10.57	23.37	10.15	0.90	1.10



Couleur de la couronne Kronenfarbe Crown color	marron kastanienbraun chestnut
Code	UN 8018

Tige de travail dual (intégrée dans le mouvement)  
 Arbeitstellwelle dual (im Werk eingebaut)  
 Working stem dual (implemented in the movement)

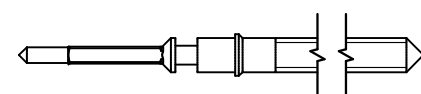
No. d'article Artikelnummer Part number	L	L1	L2	L3	S	D
3000.190.CO	18.23	10.63	23.43	10.15	0.90	1.10



Couleur de la couronne Kronenfarbe Crown color	caramel caramel karamel
Code	UN 8035

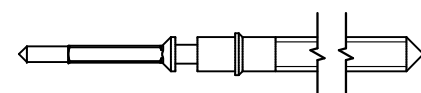
Tige (normale) / Stellwelle (normal) / Stem (normal)

No. d'article Artikelnummer Part number	L	L1	L2	L3	S	D
3000.189	19.30	10.57	23.37	10.15	0.90	1.10
3000.199	25.00	16.27	29.07	15.85	0.90	1.10



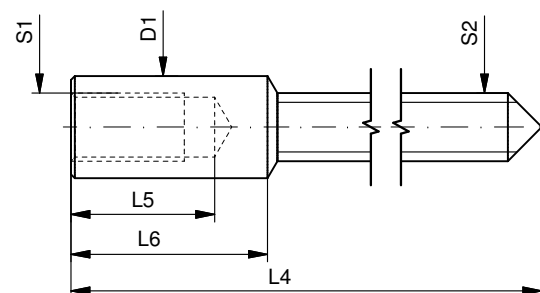
Tige dual (normale) / Stellwelle dual (normal) / Stem dual (normal)

No. d'article Artikelnummer Part number	L	L1	L2	L3	S	D
3000.190	18.23	10.63	23.43	10.15	0.90	1.10
3000.200	25.00	17.40	30.20	16.92	0.90	1.10

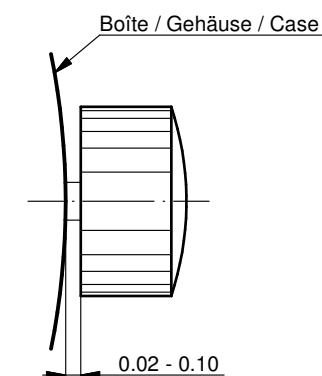


Rallonge de tige / Stellwelle Verlängerung / Stem extension

No. d'article Artikelnummer Part number	L4	L5 (min)	L6	S1	S2	D1
3000.040	12.00	1.90	2.60	0.90	0.90	1.35



Couronne normale  
 Normale Krone  
 Normal crown



Couronne vissée  
 Geschraubte Krone  
 Screwed crown

Force ⇐ min. Kraft ⇐ min. Force ⇐ min.	10 N
Force ⇐ max. Kraft ⇐ max. Force ⇐ max.	15 N

Tige (dimensions / forces)  
 Stellwelle (Dimensionen / Kräfte)  
 Stem (dimensions / forces)

RONDA 6203.B

Issued	06 Sep 2012	ds5222
Modified	17 Mär 2017 ÄA 34582	mg5224
Released	YES	
Tolerance	---	
Scale	10:1 (A3)	

Sous réserve de modifications  
 Änderungen vorbehalten  
 Modifications reserved

No.	5030.020	01
-----	----------	----

**RONDA normtech**

– 6203.B

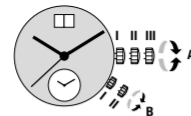
**RONDA mastertech**

– 7003.L

– 7003.N

– 7004.N

– 7004.P



**Cal. 6203.B**

**Crown A**

**Pos. I Position of rest** (watch running)

**Pos. II Quick-change correction for date**

*The date can also be corrected during the day-changing phase between 10.00 pm and midnight. The date of the following day has to be set, because no automatic date change takes place at midnight.*

- Pull the crown out to position II (watch still running).
- Turn the crown clockwise until the required date appears.
- Push the crown back into position I.

**Pos. III Setting the time** (both time zones together)

- Pull the crown out to position III (watch stopped).
- Turn the crown, until the current time is displayed (remember the 24-hour cycle).
- Push the crown back into position I.

**Cal. 6203.B**

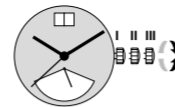
**Crown B**

**Pos. I Position of rest**

**Pos. II Setting the time of the 2<sup>nd</sup> time zone**

*During the time setting of the 2<sup>nd</sup> time zone, crown A must be in position I.*

- Pull the crown out to position II.
- Turn the crown, until the desired time is displayed.
- Push the crown back into position I.



**Cal. 7003.L**



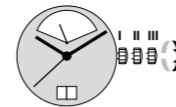
**Cal. 7004.N**

**Pos. I Position of rest** (watch running)

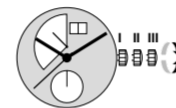
**Pos. II Quick-change correction for date**

*The date can also be changed during the day-changing phase between approx. 8.00 pm and midnight. The date of the following day has to be set, because no automatic date change takes place at midnight.*

- Pull the crown out to position II (watch still running).
- Turn the crown until the current date appears.
- Push the crown back into position I.



**Cal. 7003.N**



**Cal. 7004.P**

**Pos. III Setting the time**

- Pull the crown out to position III (watch stopped).
- Turn the crown, until the current time is displayed (remember the 24-hour cycle).
- Push the crown back into position I.

**Setting the day of the week**

*There is no quick-change correction available for setting the day of the week.*

- Pull the crown out to position III (watch stopped).
- Turn the hands forward by turning the crown, until the current day of the week appears.
- Push the crown back into position II and set the current date using the quick change correction.
- Push the crown back into position I.

**Cal. 7003.L / 7003.N / 7004.N / 7004.P**

**Cal. 6203.B**

Battery type: 373/SR916SW

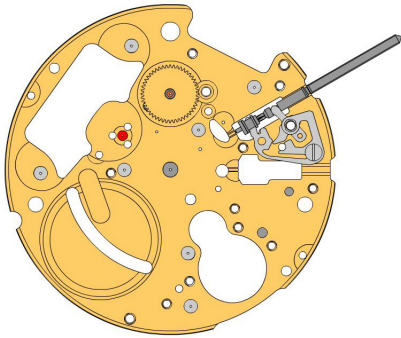
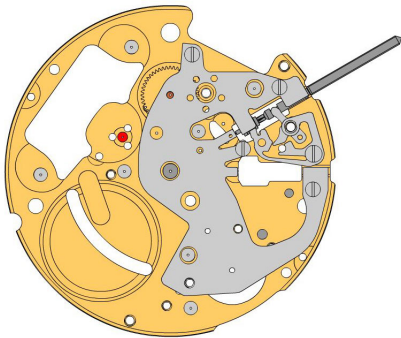
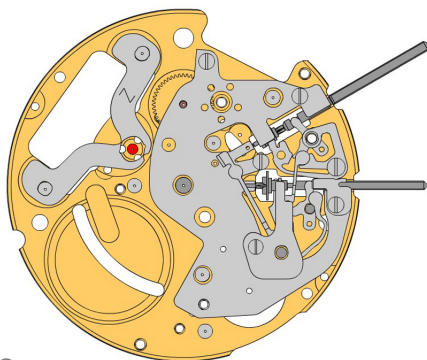
**Cal. 7003.L / 7003.N / 7004.N / 7004.P**









Battery type: 381/SR1120SW



Precision: +20/-10 seconds per month










You have decided to buy a watch, which was assembled by a watchmaker using a Ronda movement. Please note that no watches are produced or distributed under the Ronda brand.

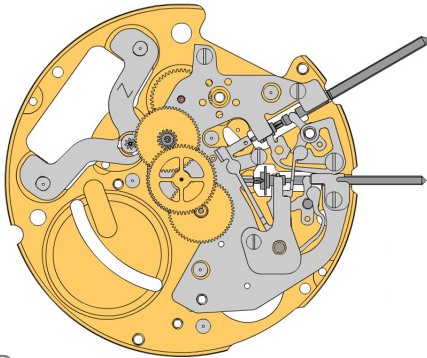
In case of repairs, guarantee claims and questions concerning the functioning of a watch, purchasers and consumers should contact their retailer or the watch manufacturer, for which the relevant information can be found in the sales or guarantee documentation provided with the watch.






**A**

**B**

**C**

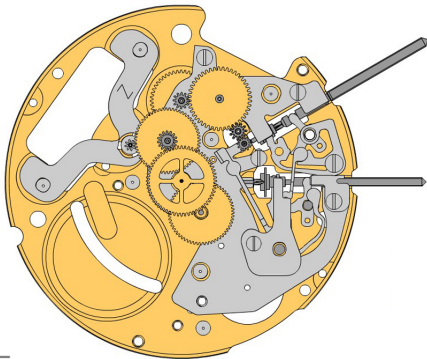
2000.627.G 1.		Main plate
3017.052 2.		Setting lever dual
3015.075 3.		Yoke dual Yoke dual held by 1 screw 4000.282.
4000.282 4.		Screw
3001.044 5.		Sliding pinion
3000.190.CO 6.		Handsetting stem dual
3315.018 7.		Friction spring
3301.277 8.		Hour wheel dual (Aig.1)




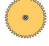
2130.167.CO 9.		Setting mechanism cover Setting mechanism cover tenue par 3 vis 4000.321. Parts 2130.167.CO and 3004.188 must be exchanged together.
4000.312 10.		Screw

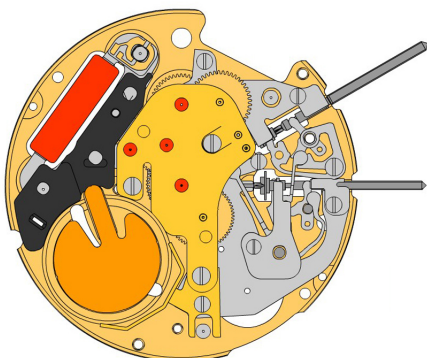
3017.057 11.		Setting lever
3015.074 12.		Yoke (3 positions) Tensioning the spring arm.
3001.042.FI 13.		Sliding pinion
3000.189.CO 14.		Handsetting stem
2020.166 15.		Yoke bridge Yoke bridge held by 1 screw 4000.328.
4000.328 16.		Screw
2130.199 17.		Stem maintaining plate Stem maintaining plate held by 1 screw 4000.312.
4000.312 18.		Screw
3622.042 19.		Stator Mark  Z  on stator.









**D**

3715.103.RK 20.		Rotor
3147.056.CO 21.		Intermediate wheel
3122.059.CO 22.		Third wheel
3136.162.CO 23.		Center second wheel (Aig.1)

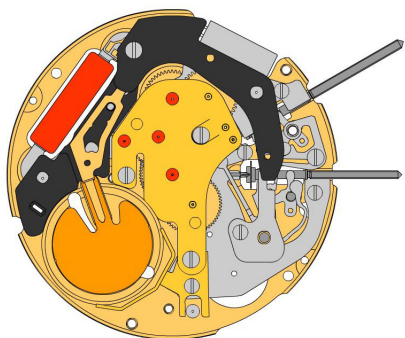

**E**

3305.313.FI 24.		Cannon pinion dual (Aig.1)
3004.185.CO 25.		Intermediate setting wheel dual
3004.198.FI 26.		Setting wheel dual
3007.074.CO 27.		Minute wheel dual

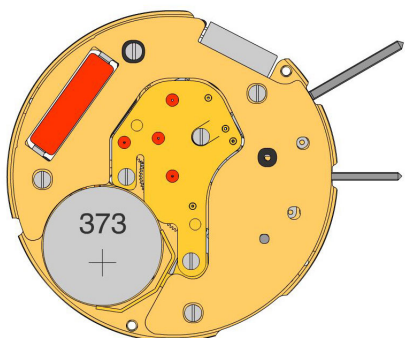

**F**

2020.180.G 28.		Train wheel bridge Train wheel bridge held by 3 screws 4000.279.
4000.279 29.		Screw
3601.117.G 30.		Battery clamp + Lateral bridle held by 1 screw 4000.244.
4000.244 31.		Screw
3621.060.RK 32.		Coil Attention: Please hold the coil only on the grey coil core.
3603.074 33.		Bridle (-) insulator
3603.075 34.		Battery insulator





G



H

3601.116  
35.



**Bridle -**  
Place bridle as shown on graphics.

3612.181  
36.



**Electronic module**  
Electronic module held by 1 screw 4000.318. Electronic measurements may be realised now.

4000.318  
37.



**Screw**

2130.168.G.M01.6203B  
38.



**Electronic module cover**  
Electronic module cover held by 3 screws 4000.102.

4000.102  
39.

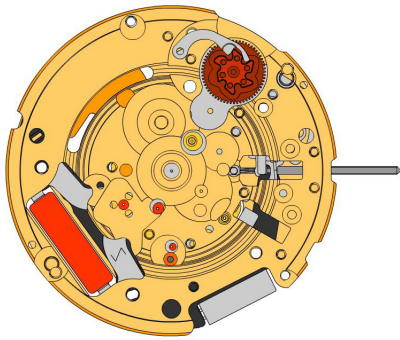


**Screw**

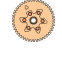
3600.031.HGF  
40.



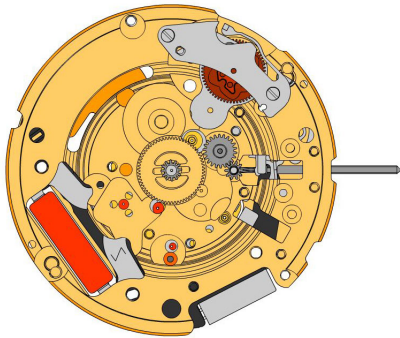
**Battery 373**



**I**

2000.627.G  
41.  Main plate

3004.188  
42.  Tens indicator driving wheel  
The short tooth of the tens indicator driving wheel must point to the center of the movement. Parts 2130.167.CO and 3004.188 must be exchanged together.

3500.060  
43.  Tens jumper



**J**

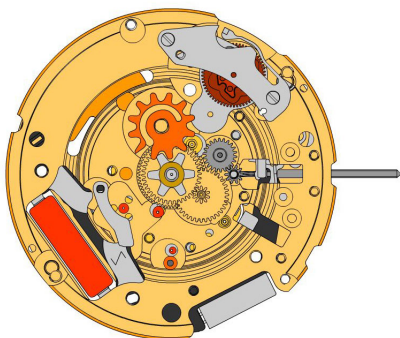
2130.171  
44.  Tens jumper maintaining plate  
Tens jumper maintaining plate held by 2 screws 4000.332. Tensioning the spring arm.

4000.332  
45.  Screw

3004.182.FI  
46.  Setting wheel

3004.183.FI  
47.  Intermediate setting wheel

3305.308.CO  
48.  Cannon pinion driving wheel (Aig.1)


**K**

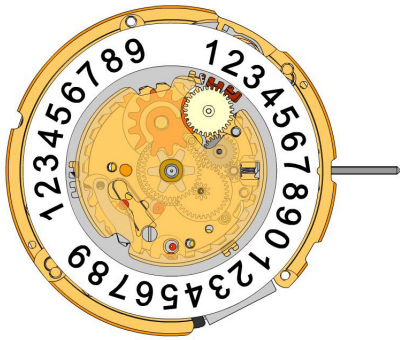
3007.081.CO  
49.  Minute wheel

3301.273.CO  
50.  Hour wheel (Aig.1)

3315.001  
51.  Friction spring


3004.187  
52.  Date indicator driving wheel


3500.061  
53.  Date jumper




L

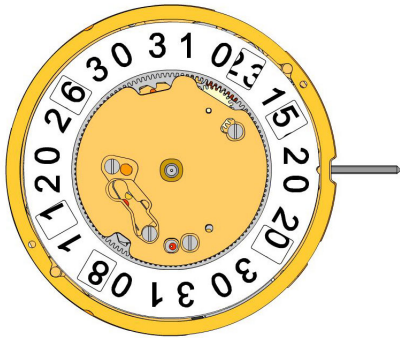
3504.217.AF.1.A  
54.  Units indicator (standard)  
Nick of the indicator at 3 o'clock.

3147.057  
55.  Tens intermediate wheel

2130.169  
56.  Date indicator maintaining plate  
Date indicator maintaining plate held by 1 screw 4000.312.


4000.312  
57.  Screw

3905.070  
58.  Date jumper spring  
Insert the date jumper spring in the provided opening.



M

3504.218.AF.1.A  
59.  Tens indicator (standard)  
Nick of the indicator at 3 o'clock.

2130.170.G  
60.  Date mechanism maintaining plate  
Date mechanism maintaining plate held by 3 screws 4000.312.

4000.312  
61.  Screw

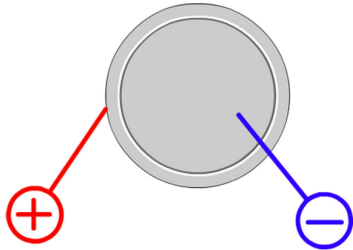
3506.075.G  
62.  Dial support

8200  
63.  Moebius 8200

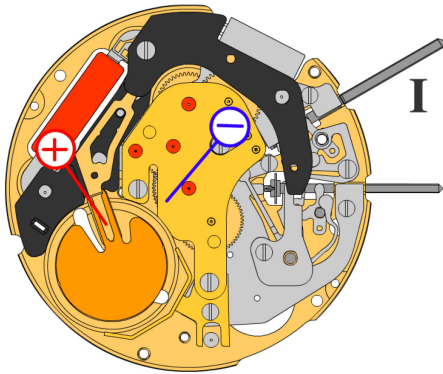
9014  
64.  Moebius 9014

124  
65.  Jismaa 124

9020  
66.  Moebius 9020

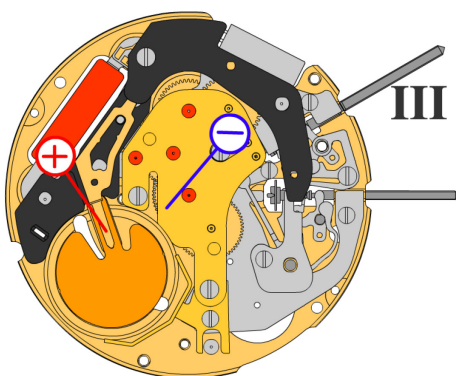


Battery	<b>373</b>
Voltage	<b>1.55 V</b>



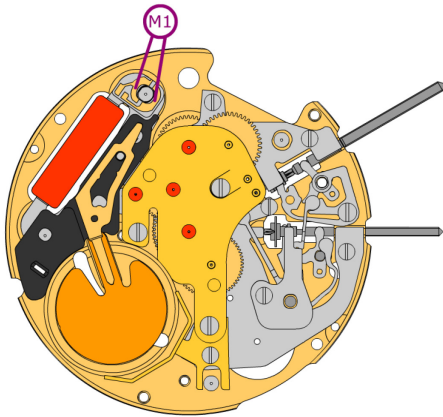
*Setting stem in position I, calendar not in gear,  
60 s measuring interval for rate and consumption:*

Typical consumption	<b>1.03 <math>\mu</math>A</b>
Maximal consumption	<b>1.85 <math>\mu</math>A</b>
Instantaneous rate	<b>-10s/M. .. +20s/M.</b>
Lower working voltage limit	<b>1.20 V</b>



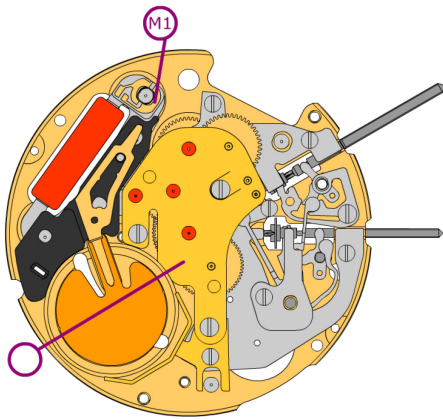
*Setting stem in position III, 60 s measuring interval:*

Typical consumption	<b>0.10 <math>\mu</math>A</b>
Maximal consumption	<b>0.30 <math>\mu</math>A</b>



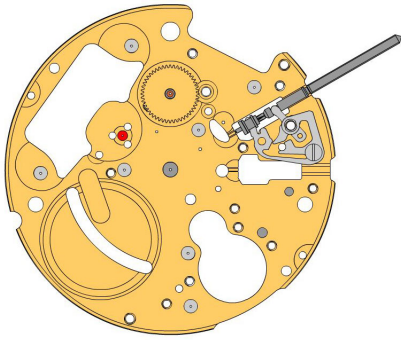
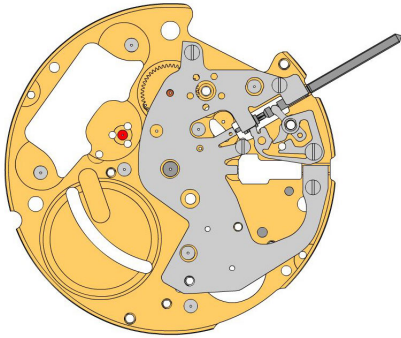
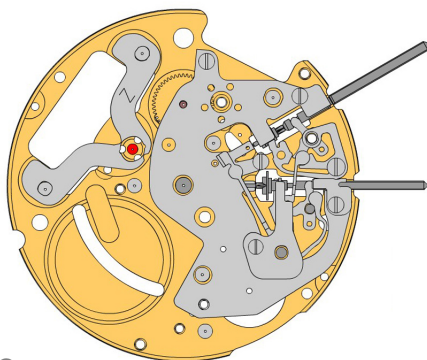
Coil resistance M1








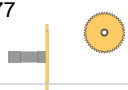











**1.61 k $\Omega$  .. 1.81 k $\Omega$**

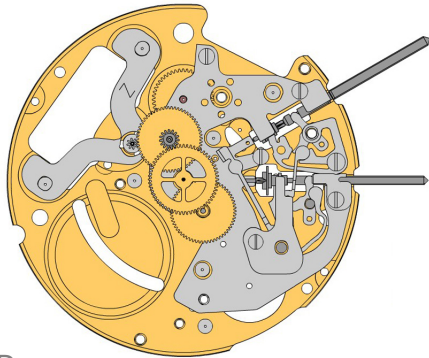



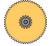


Coil isolation M1

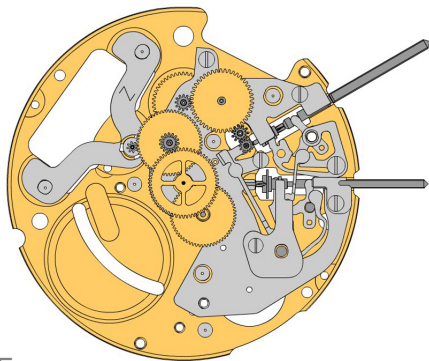
**$\infty$  k $\Omega$**




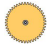

**A**

**B**

**C**

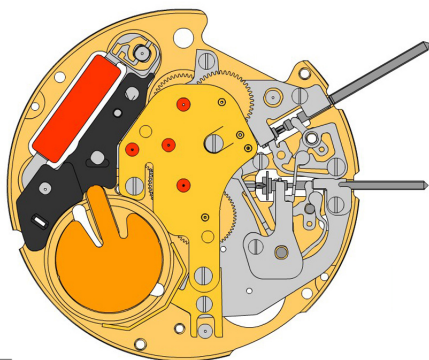
2000.627.G 1.		Main plate
3017.052 2.		Setting lever dual
3015.075 3.		Yoke dual Yoke dual held by 1 screw 4000.282.
4000.282 4.		Screw
3001.044 5.		Sliding pinion
3000.190.CO 6.		Handsetting stem dual
3315.018 7.		Friction spring
3301.277 8.		Hour wheel dual (Aig.1)
2130.204.CO 9.		Setting mechanism cover Setting mechanism cover tenue par 3 vis 4000.321.
4000.312 10.		Screw
3017.057 11.		Setting lever
3015.074 12.		Yoke (3 positions) Tensioning the spring arm.
3001.042.FI 13.		Sliding pinion
3000.189.CO 14.		Handsetting stem
2020.166 15.		Yoke bridge Yoke bridge held by 1 screw 4000.328.
4000.328 16.		Screw
2130.199 17.		Stem maintaining plate Stem maintaining plate held by 1 screw 4000.312.
4000.312 18.		Screw
3622.042 19.		Stator Mark  Z  on stator.









**D**

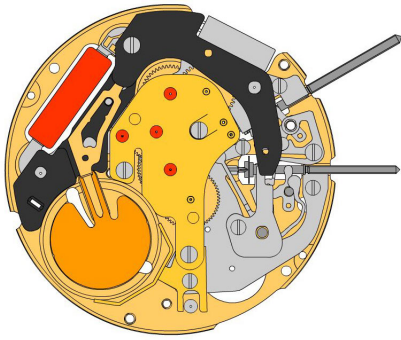
3715.103.RK 20.		Rotor
3147.056.CO 21.		Intermediate wheel
3122.059.CO 22.		Third wheel
3136.162.CO 23.		Center second wheel (Aig.1)


**E**

3305.313.FI 24.		Cannon pinion dual (Aig.1)
3004.185.CO 25.		Intermediate setting wheel dual
3004.198.FI 26.		Setting wheel dual
3007.074.CO 27.		Minute wheel dual


**F**

2020.180.G 28.		Train wheel bridge Train wheel bridge held by 3 screws 4000.279.
4000.279 29.		Screw
3601.117.G 30.		Battery clamp + Lateral bridle held by 1 screw 4000.244.
4000.244 31.		Screw
3621.060.RK 32.		Coil Attention: Please hold the coil only on the grey coil core.
3603.074 33.		Bridle (-) insulator
3603.075 34.		Battery insulator



G

3601.116  
35.



**Bridle -**  
Place bridle as shown on graphics.

3612.181  
36.



**Electronic module**  
Electronic module held by 1 screw 4000.318. Electronic measurements may be realised now.

4000.318  
37.



**Screw**

2130.168.G.M01.6203B  
38.



**Electronic module cover**  
Electronic module cover held by 3 screws 4000.102.

4000.102  
39.

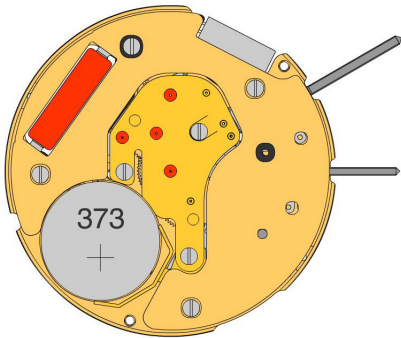


**Screw**

3600.031.HGF  
40.

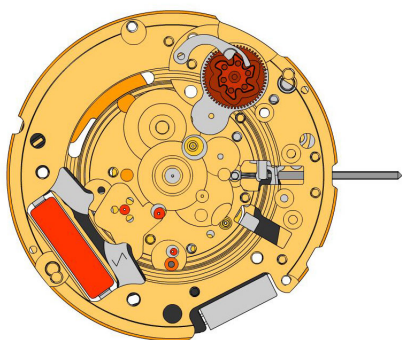
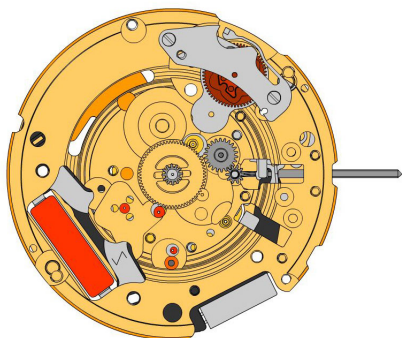
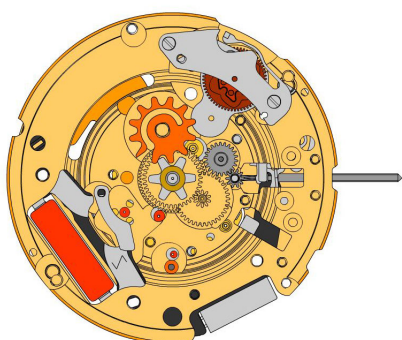





**Battery 373**













H

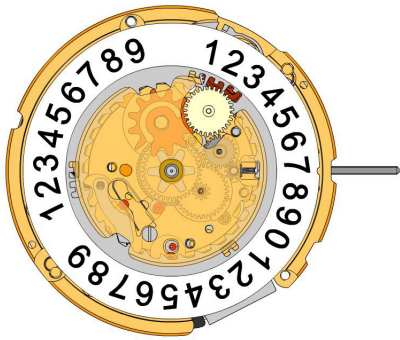



**I**

**J**

**K**

2000.627.G 41.		Main plate
3004.232 42.		Tens indicator driving wheel The short tooth of the tens indicator driving wheel must point to the center of the movement.
3500.060 43.		Tens jumper


2130.171 44.		Tens jumper maintaining plate Tens jumper maintaining plate held by 2 screws 4000.332. Tensioning the spring arm.
4000.332 45.		Screw
3004.182.FI 46.		Setting wheel
3004.183.FI 47.		Intermediate setting wheel
3305.308.CO 48.		Cannon pinion driving wheel (Aig.1)


3007.081.CO 49.		Minute wheel
3301.273.CO 50.		Hour wheel (Aig.1)
3315.001 51.		Friction spring
3004.187 52.		Date indicator driving wheel
3500.061 53.		Date jumper




L

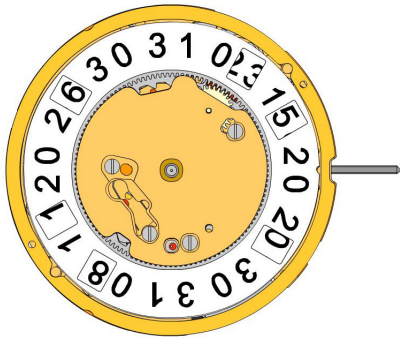
3504.217.AF.1.A  
54.  Units indicator (standard)  
Nick of the indicator at 3 o'clock.

3147.057  
55.  Tens intermediate wheel

2130.169  
56.  Date indicator maintaining plate  
Date indicator maintaining plate held by 1 screw 4000.312.

4000.312  
57.  Screw

3905.070  
58.  Date jumper spring  
Insert the date jumper spring in the provided opening.



M

3504.218.AF.1.A  
59.  Tens indicator (standard)  
Nick of the indicator at 3 o'clock.

2130.170.G  
60.  Date mechanism maintaining plate  
Date mechanism maintaining plate held by 3 screws 4000.312.

4000.312  
61.  Screw

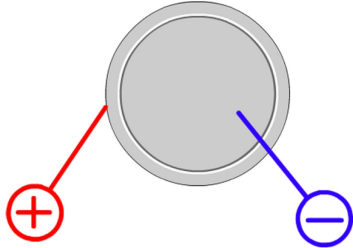
3506.075.G  
62.  Dial support

8200  
63.  Moebius 8200

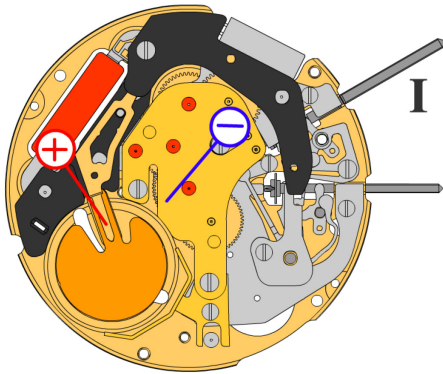
9014  
64.  Moebius 9014

124  
65.  Jismaa 124

9020  
66.  Moebius 9020

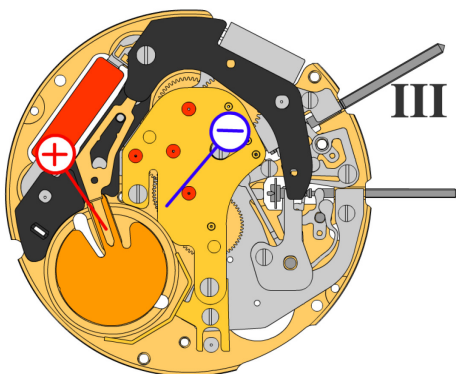


Battery	<b>373</b>
Voltage	<b>1.55 V</b>



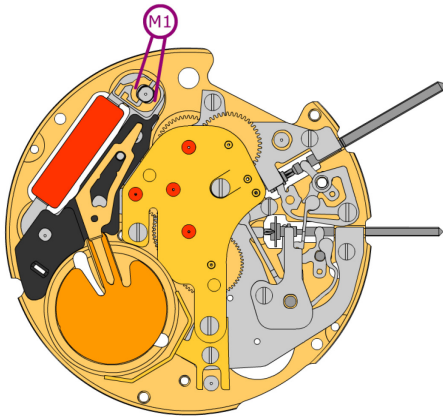
*Setting stem in position I, calendar not in gear,  
60 s measuring interval for rate and consumption:*

Typical consumption	<b>1.03 <math>\mu</math>A</b>
Maximal consumption	<b>1.85 <math>\mu</math>A</b>
Instantaneous rate	<b>-10s/M. .. +20s/M.</b>
Lower working voltage limit	<b>1.20 V</b>



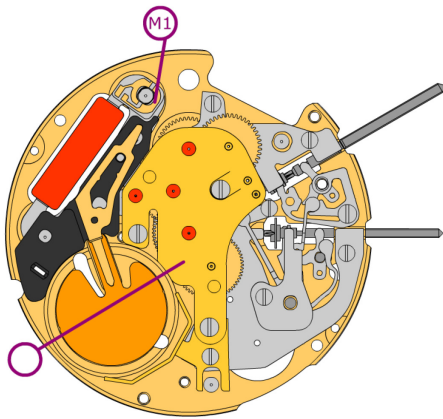
*Setting stem in position III, 60 s measuring interval:*

Typical consumption	<b>0.10 <math>\mu</math>A</b>
Maximal consumption	<b>0.30 <math>\mu</math>A</b>



Coil resistance M1

**1.61 k $\Omega$  .. 1.81 k $\Omega$**



Coil isolation M1

**$\infty$  k $\Omega$**