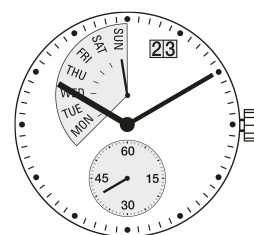


RONDA mastertech 7000

XXL Multifunctions,
Retrograde and Big Date

Caliber 7004.P – 15'''



Product Specifications

Analog quartz movement

Line	mastertech
Caliber	7004.P
Size	15'''
Version	Swiss Made
	6 Jewels / gold plated
Standard battery life	48 months
Hand fitting height	1

Features

- Very long battery life
- Repairable metal watch movement
- Power saving mechanism with pulled out stem: Reduction of consumption approximately 70%

Functions

- Day indicator
- Big date
- Small second
- Day Retrograde
- Retrograde

Technical Specifications

Diameter Total	34.60 mm
Case fitting	33.80 mm
Movement height	5.60 mm
Height over standard battery	5.60 mm
Movement rest	0.60 mm
Height over stem	3.30 mm
Length of stem travel	1.00 mm
Stem thread	0.90 mm
Standard battery	381
Standard battery life	48 months
Battery voltage	1.5 V
Current consumption – typical	1.43 µA (Date Mechanism not in Gear)
Current consumption – maximum	3.1 µA (Date Mechanism not in Gear)
Useful torque second – typical	10 µNm
Useful torque minute – typical	500 µNm
Operating temperature	0 - 50 °C
Instantaneous rate	-10/ +20 sec/month
Resistance to magnetic fields	18.8 Oe
Resistance against shock	NIHS 91-10

Watch production

- Drawing Casing ring (standard, PDF)
- Drawing Dial (stem 3h, day retro 10 1/2h, date 1h, PDF)
- Drawing Hand fitting (hand height 1, PDF)
- Drawing Stem
- Casing information (PDF)

User's manual

User's manual (PDF)

Watch repairs

- Technical instruction up to code M (PDF)
- Technical instruction as of code N (PDF)
- Technical instruction as of code V (PDF)

