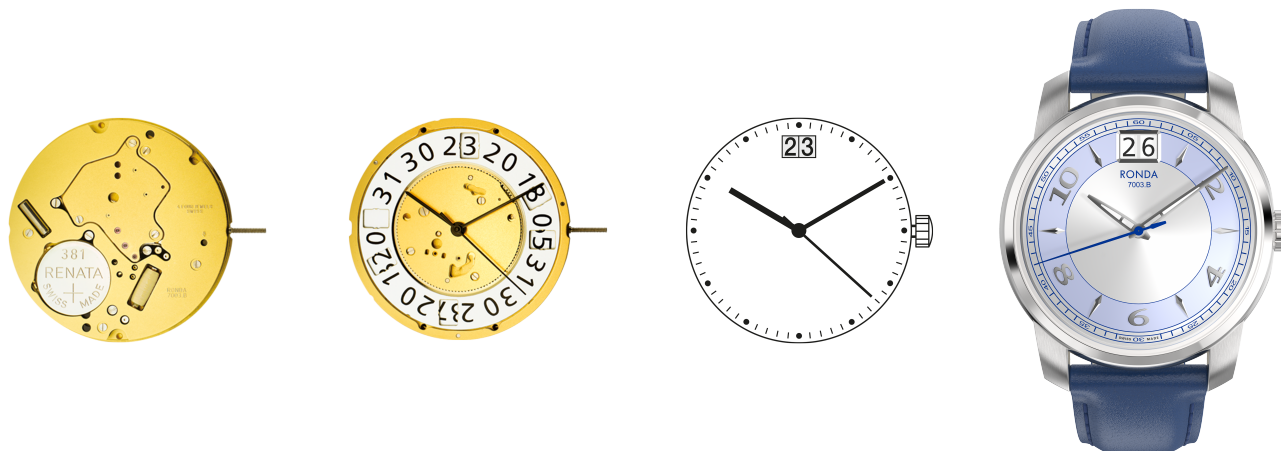


RONDA mastertech 7000

XXL Multifunctions,
Retrograde and Big Date

Caliber 7003.B – 15'''



Product Specifications

Analog quartz movement	
Line	mastertech
Caliber	7003.B
Size	15'''
Version	Swiss Made
	5 Jewels / gold plated
Standard battery life	52 months
Hand fitting height	1

Features

- Very long battery life
- Repairable metal watch movement
- Power saving mechanism with pulled out stem: Reduction of consumption approximately 70%

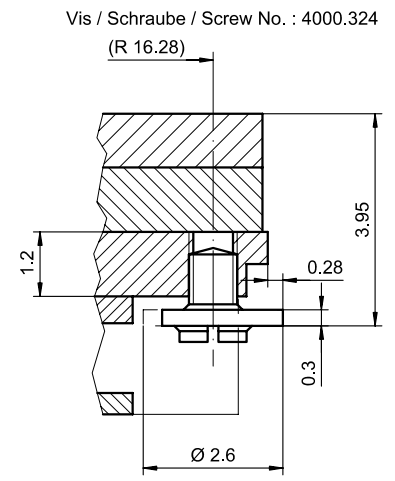
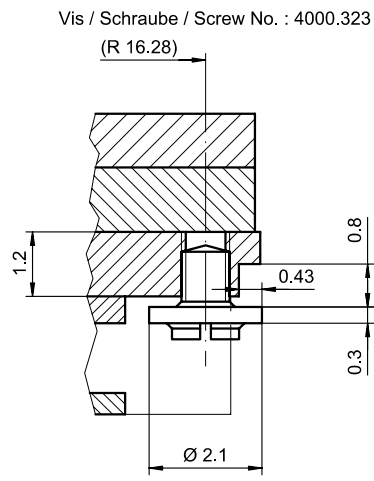
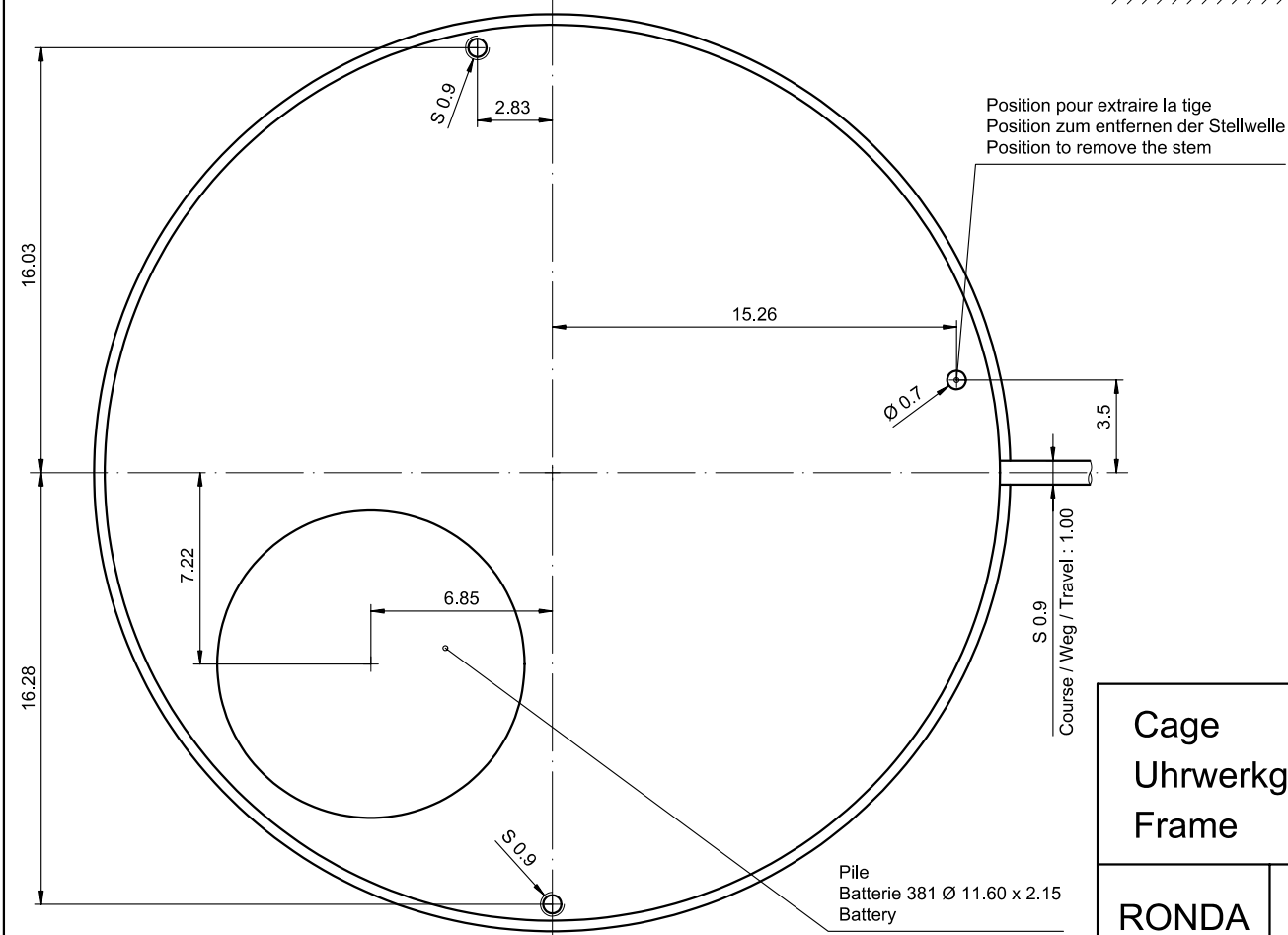
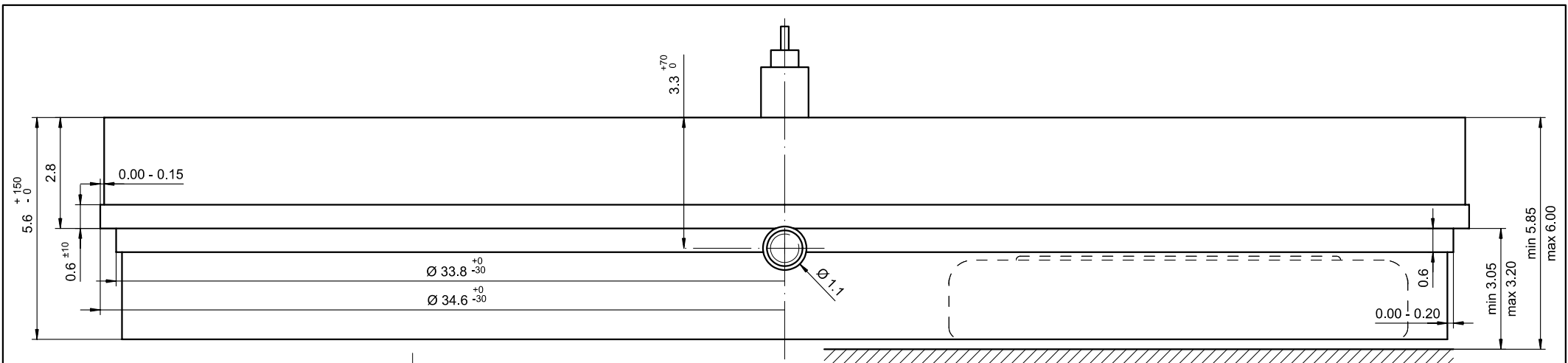
Functions

- Big date
- 3 hands

Technical Specifications

Diameter Total	34.60 mm
Case fitting	33.80 mm
Movement height	5.60 mm
Height over standard battery	5.60 mm
Movement rest	0.60 mm
Height over stem	3.30 mm
Length of stem travel	1.00 mm
Stem thread	0.90 mm
Standard battery	381
Standard battery life	52 months
Battery voltage	1.5 V
Current consumption – typical	1.32 μ A (Date Mechanism not in Gear)
Current consumption – maximum	3.1 μ A (Date Mechanism not in Gear)
Useful torque second – typical	10 μ Nm
Useful torque minute – typical	500 μ Nm
Operating temperature	0 - 50 °C
Instantaneous rate	-10/ +20 sec/month
Resistance to magnetic fields	18.8 Oe
Resistance against shock	NIHS 91-10

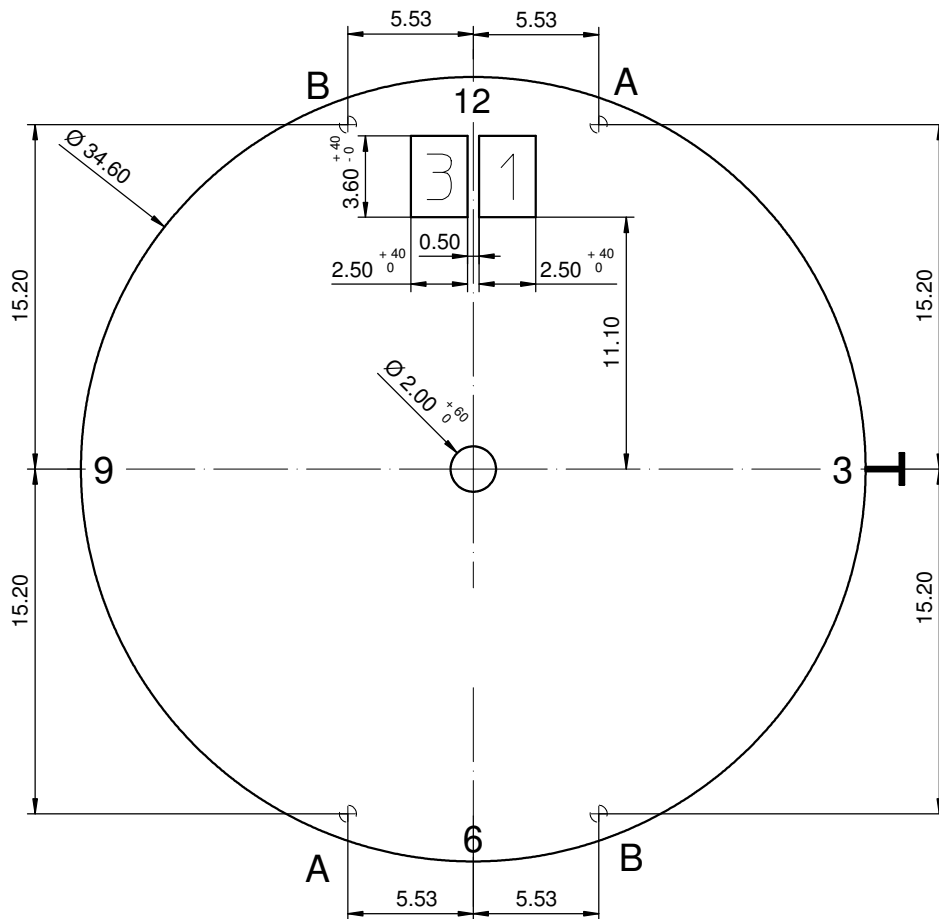




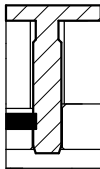
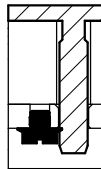
Sécurité entre l'aiguille des seconde et le verre : min 0.50 mm
 Sicherheit zwischen Sekundenzeiger und Glas : min 0.50 mm
 Security between second hand and glass : min 0.50 mm

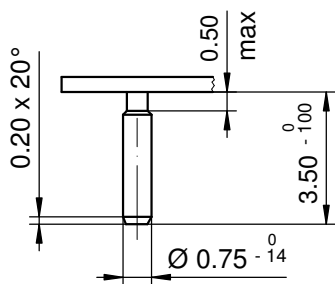
Le cadran doit être tenu par la boîte.
 Das Zifferblatt muss durch die Schale gehalten werden.
 The dial must be hold by the case.

Cage Uhrwerkgestell Frame		15"		Issued	22 Aug 2007	dh
				Modified	08.02.2010	dh
RONDA		7003.B		Released	YES	
				Tolerance	+/- 20 µm	
				Scale	10 : 1 (5 : 1) (A3H)	
				Sous réserve de modifications Aenderungen vorbehalten Modifications reserved		
				No.	5000.365	01



Disponibles positions pour pieds de cadran / Available dial feet positions / Verfügbare Zifferblatfußpositionen

A Pos 1h / 7h	B Pos 5h / 11h
 <p>Fixation du cadran avec rondelle en plastique Dial fixation by plastic disc Zifferblattbefestigung durch Kunststoffscheibe</p>	 <p>Fixation du cadran avec clef de cadran Dial fixation by dial - key Zifferblattbefestigung durch Zifferblattschlüssel</p>



Epaisseur du cadran selon hauteur de l'aiguillage
Zifferblattstärke gemäss Zeigerwerkhöhen
Dial thickness according to hand fitting heights

Tige	Date
Stellw.	Datum
Stem	Date
3H	12H

Cadran
Zifferblatt
Dial

15"

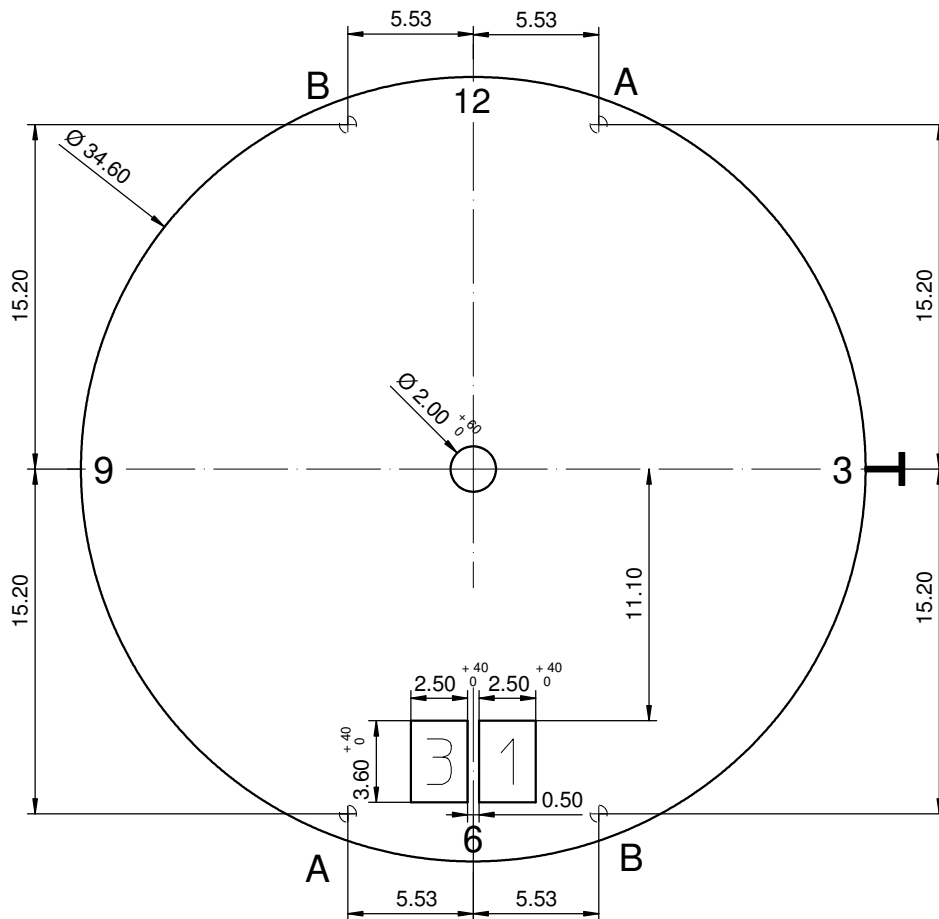
Issued	22 Aug 2007	dh
Modified	26 Nov 2012 ÄÄ 10475	dh
Released	YES	
Tolerance	+/- 20 µm	
Scale	3 : 1 (A4V)	

RONDA

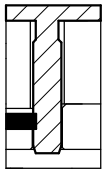
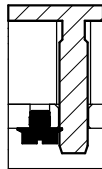
7002.B, 7003.B

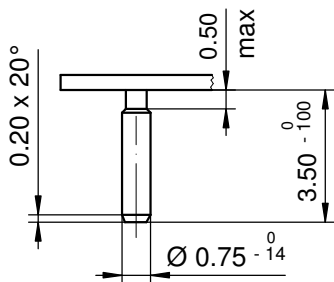
Sous réserve de modifications
Änderungsvorbehalten
Modifications reserved

No.	5010.637	01
-----	----------	----



Disponibeles positions pour pieds de cadran / Available dial feet positions / Verfügbare Zifferblatfußpositionen

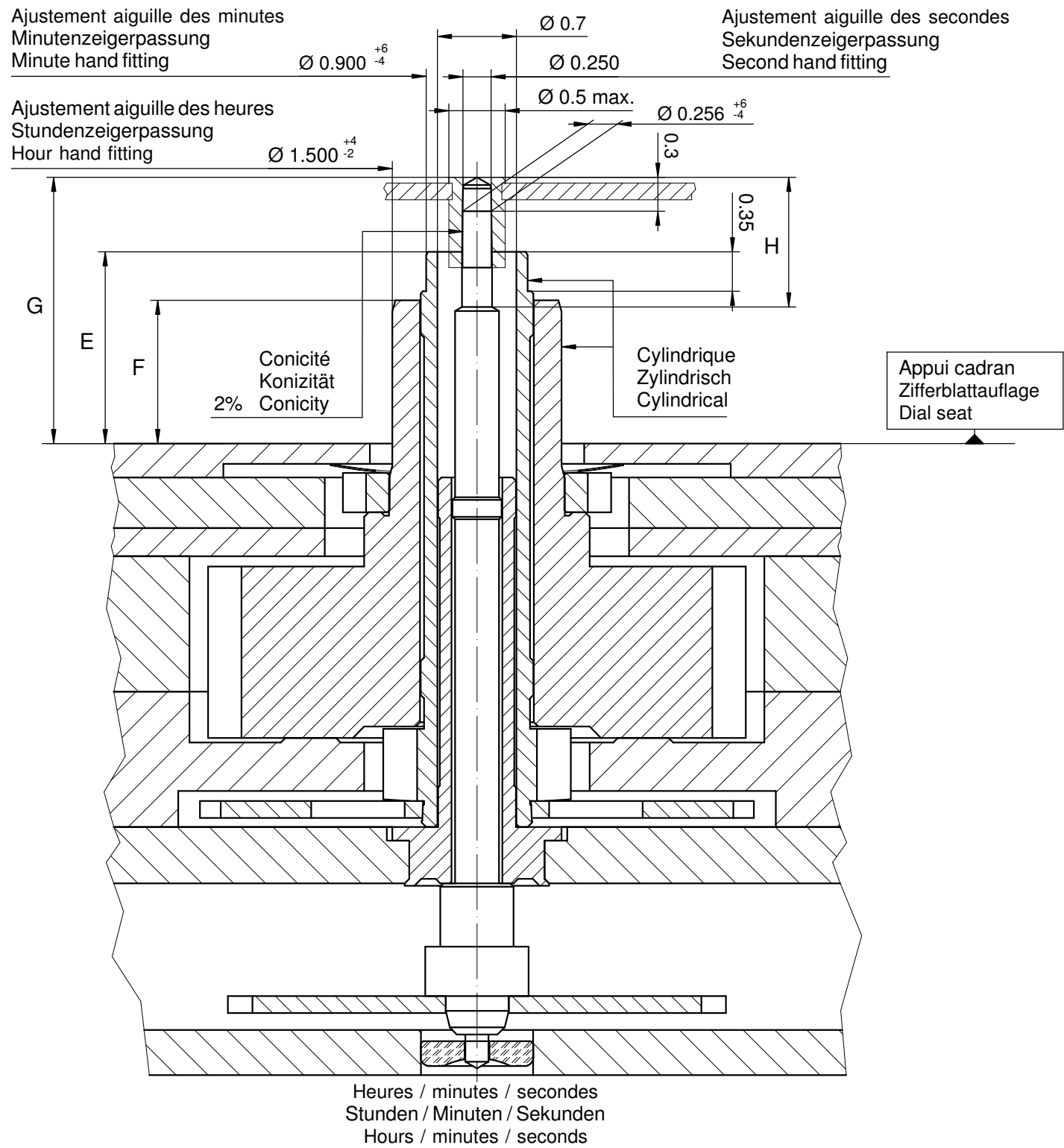
A Pos 1h / 7h	B Pos 5h / 11h
 <p>Fixation du cadran avec rondelle en plastique Dial fixation by plastic disc Zifferblattbefestigung durch Kunststoffscheibe</p>	 <p>Fixation du cadran avec clef de cadran Dial fixation by dial - key Zifferblattbefestigung durch Zifferblattschlüssel</p>



Epaisseur du cadran selon hauteur de l'aiguillage
Zifferblattdicke gemäss Zeigerwerkhöhen
Dial thickness according to hand fitting heights

Tige	Date
Stellw.	Datum
Stem	Date
3H	6H
	<input type="checkbox"/>

Cadran Zifferblatt Dial	15"	Issued	22 Aug 2007	dh
		Modified	26 Nov 2012 ÄA 10475	dh
		Released	YES	
		Tolerance	+/- 20 µm	
		Scale	3 : 1 (A4V)	
RONDA	7002.B, 7003.B	Sous réserve de modifications Aenderungenvorbehalten Modifications reserved		
		No.	5010.638	01



Aiguillages Zeigerwerkhöhe Hand fitting height				
Dépassement Höhe über Zifferblattauflage Height over dial seat				
No	Pignon des secondes Sekundentrieb Second pinion	Chaussee Minutenrohr Cannon-pinion	Roue des heures Stundenrad Hour wheel	
1	G	E	F	H
-				

Aiguillages Zeigerwerkhöhe Hand fitting height				
Peinture comprise / inkl. Farbe / Paint included				
Epaisseur maximum du cadran Maximale Zifferblattdicke Maximum dial thickness				
No	Sous l'aiguille des secondes Unter Sekundenzeiger Under second hand	Sous l'aiguille des minutes Unter Minutenzeiger Under minute hand	Sous l'aiguille des heures Unter Stundenzeiger Under hour hand	Epaisseur des aiguilles Zeigerdicke Hands thickness
1	1.85	1.30	0.85	0.15
-				

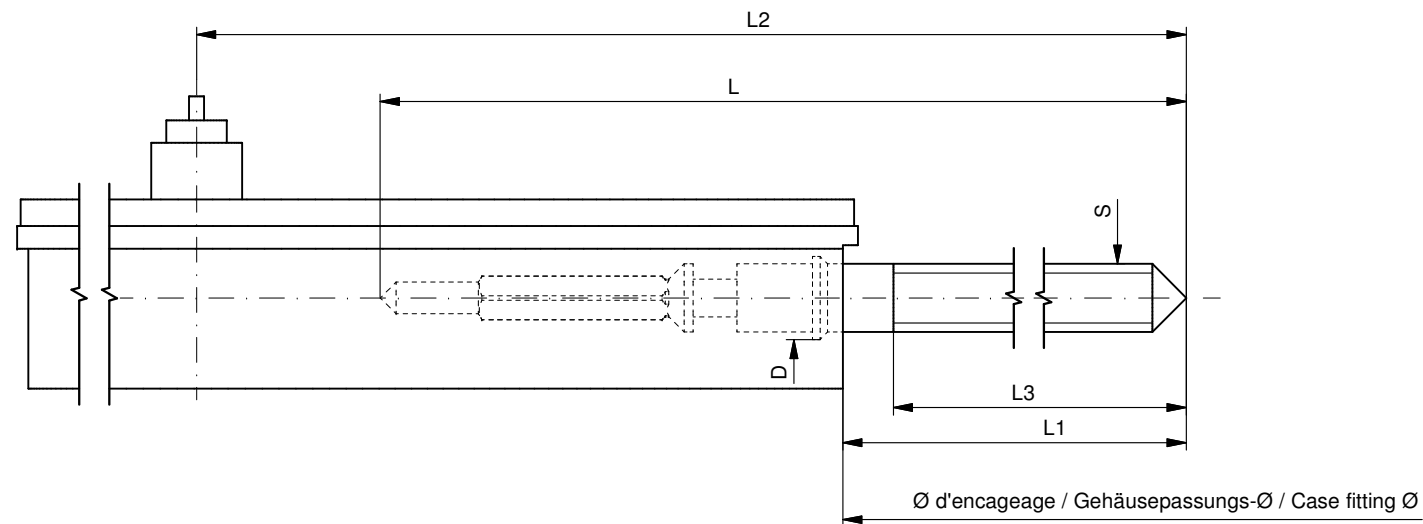
	Aig. des secondes Sekundenzeiger Second hand	Aig. des minutes Minutenzeiger Minute hand	Aig. des heures Stundenzeiger Hour hand	
mg max.	10	30	30	Masse / Masse / Weight *
µNm max.	0.08	0.70	0.70	Balourd / Unwucht / Unbalance *
gmm ² max.	0.6	-	-	Inertie / Massenträgheit / Inertia *
N max.	30	40	40	Force de chassage / Aufpresskraft / Force

Lors de la pose d'aiguilles, le mouvement doit être soutenu.
 Beim Zeigersetzen muss das Werk abgestützt werden.
 The movement needs to be supported for hand setting.

Sous réserve de toutes modifications / Änderungen vorbehalten / All modifications reserved

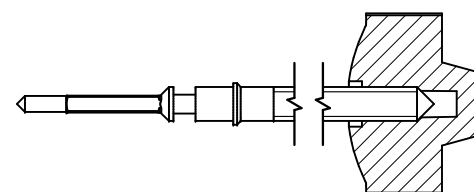
15''	Issued	22 Aug 2007	dh
	Modified	27.10.2011 ÄA 11646	dh
	Released	YES	
	Tolerance	µm	
	Scale	20:1 (A3H)	
	Sous réserve de modifications / Änderungen vorbehalten / Modifications reserved		
RONDA	7003.B	No. 3316.118	03

* En cas de données différentes, veuillez contacter le service après-vente / * Bei abweichenden Werten, bitte technischen Kundendienst anfragen / * In case of different values, please contact the customer service



Tige de travail (intégrée dans le mouvement)
 Arbeitstellwelle (im Werk eingebaut)
 Working stem (implemented in the movement)

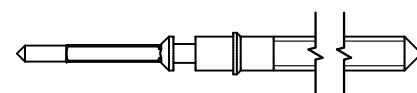
No. d'article Artikelnummer Part number	L	L1	L2	L3	S	D
3000.194.CO	21.30	10.74	27.64	10.15	0.90	1.10



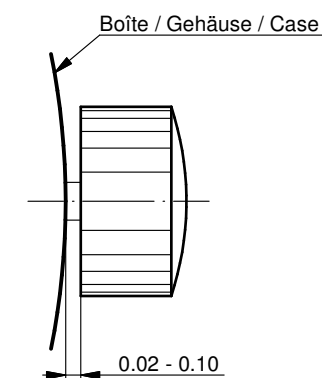
Couleur de la couronne Kronenfarbe Crown color	violet violett purple
Code	UN 5046

Tige (normale) / Stellwelle (normal) / Stem (normal)

No. d'article Artikelnummer Part number	L	L1	L2	L3	S	D
3000.194	21.30	10.74	27.64	10.15	0.90	1.10



Couronne normale
 Normale Krone
 Normal crown

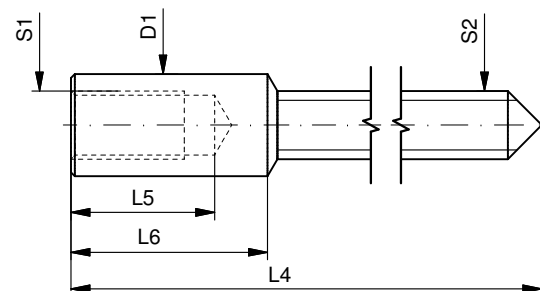


Couronne vissée
 Geschraubte Krone
 Screwed crown

Force ⇐ min. Kraft ⇐ min. Force ⇐ min.	10 N
Force ⇐ max. Kraft ⇐ max. Force ⇐ max.	15 N

Rallonge de tige / Stellwelle Verlängerung / Stem extension

No. d'article Artikelnummer Part number	L4	L5 (min)	L6	S1	S2	D1
3000.040	12.00	1.90	2.60	0.90	0.90	1.35



Tige (dimensions / forces)
 Stellwelle (Dimensionen / Kräfte)
 Stem (dimensions / forces)

RONDA

7002.B, 7003.B, 7003.L, 7003.N,
 7004.B, 7004.N, 7004.P

Issued	06 Sep 2012	ds5222
Modified	17 Mär 2017 ÄA 34582	mg5224
Released	YES	
Tolerance	---	
Scale	10:1 (A3)	

Sous réserve de modifications
 Änderungen vorbehalten
 Modifications reserved

No.	5030.022	02
-----	----------	----

User's Manual English

Movements Caliber

RONDA powertech

– 585
– 505
– 515

RONDA slimtech

– 1005
– 1006
– 1009
– 1015
– 1016
– 1019

RONDA normtech

– 774 – 6003.D
– 775 – 6004.D
– 704 – 6003.B
– 705 – 6004.B
– 784
– 785
– 714
– 715
– 715Li

RONDA mastertech

– 7002.B
– 7003.B
– 7004.B

You have decided to buy a watch, which was assembled by a watchmaker using a Ronda movement. Please note that no watches are produced or distributed under the Ronda brand.

In case of repairs, guarantee claims and questions concerning the functioning of a watch, purchasers and consumers should contact their retailer or the watch manufacturer, for which the relevant information can be found in the sales or guarantee documentation provided with the watch.

Cal. 585 / 785:

Battery type: 362/SR721SW

Cal. 774 / 775 / 784:

Battery type: 364/SR621SW

Cal. 505 / 515 / 704 / 705 / 714 / 715:

Battery type: 371/SR920SW

Cal. 6003.D / 6004.D / 6003.B / 6004.B:

Battery type: 373/SR916SW

Cal. 1005 / 1006 / 1009 / 1015 / 1016 / 1019:

Battery type: 341/SR714SW

Cal. 7002.B / 7003.B / 7004.B:

Battery type: 381/SR1120SW

Cal. 715Li:

Battery type: CR 2016

Precision: +20/-10 seconds per month

Cal. 585

Cal. 6003.D

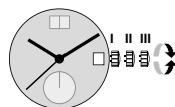
Cal. 505

Cal. 6004.D

Cal. 515

Cal. 6003.B

Cal. 6004.B



Pos. I Position of rest (watch running)

Pos. II Quick-change correction for date

The date can also be corrected during the day-changing phase between 10 pm and midnight. The date of the following day has to be set, because no automatic date change takes place at midnight.

- Pull the crown out to position II (watch still running).
- Turn the crown clockwise until the required date appears.

Cal. 6003.D & 6004.D:

- Turn the crown until the required date appears.
- Push the crown back into position I.

Pos. III Setting the time

- Pull the crown out to position III (watch stopped).
- Turn the crown, until the current time is displayed (remember the 24-hour cycle).
- Push the crown back into position I.

Cal. 774

Cal. 715Li

Cal. 775

Cal. 704

Cal. 1005

Cal. 705

Cal. 1006

Cal. 784

Cal. 1009

Cal. 785

Cal. 1015

Cal. 714

Cal. 1016

Cal. 715

Cal. 1019



Pos. I Position of rest (watch running)

Pos. II Quick-change correction for date

Blocking time for the quick-change day correction is from approx. 9.30 pm and midnight.

- Pull the crown out to position II (watch still running).
- Turn the crown until the current date appears.
- Push the crown back into position I.

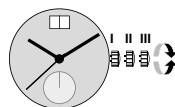
Pos. III Setting the time

- Pull the crown out to position III (watch stopped).
- Turn the crown, until the current time is displayed (remember the 24-hour cycle).
- Push the crown back into position I.

Cal. 7002.B

Cal. 7003.B

Cal. 7004.B



Pos. I Position of rest (watch running)

Pos. II Quick-change correction for date

The date can also be changed during the day-changing phase between approx. 8.00 pm and midnight. The date of the following day has to be set, because no automatic date change takes place at midnight.

- Pull the crown out to position II (watch still running).
- Turn the crown until the current date appears.
- Push the crown back into position I.

Pos. III Setting the time

- Pull the crown out to position III (watch stopped).
- Turn the crown, until the current time is displayed (remember the 24-hour cycle).
- Push the crown back into position I.